

MIRAI MR05-02 Navigation

Last Modified: 2014-07-25

[ReadMe](#) [Observation Data](#) [Data Format](#)

Cruise ID: [MR05-02](#)

Navigation: Processed (DMO)-QCed

Data Policy: [JAMSTEC](#)

Observation Items:

Science Keywords:

Cruise Report

http://www.godac.jamstec.go.jp/catalog/data/doc_catalog/media/MR05-02_all.pdf

For Using Data

Principal Investigator

Data Management Office

Use Constraints

See [Terms and Conditions](#) about constrain of use.

Data Citation

See [Terms and Conditions](#) about data citation.

Instrument

Instrument:

Radio navigation system



Overview

The following information is continuously collected and recorded as the Navigation QCed data during the cruise of R/V MIRAI.

Location
Meteorological elements
Surface temperature
Current direction and velocity
Water depth

Data are recorded every one minute, and data file named after cruise code.

System

Manufacturer: SENA Co., Ltd.

Model: Sena Advanced Integrated Navigation System version 19 for MIRAI

Data format version 02.6

Sensor specifications

1) GPS receiver

Manufacturer: Leica Geosystems AG

Model: MX9400N

Location: Navigation deck [starboard side]

Output data: raw, NMEA

Manufacturer: Leica Geosystems AG

Model: MX9400N

Location: Navigation deck [port side]

Output data: raw, NMEA

Manufacturer: Trimble Navigation Limited

Model: 4000DS

Location: Navigation deck [starboard side]

Output data: NMEA

Manufacturer: Trimble Navigation Limited

Model: 4000DS

Location: Navigation deck [port side]

Output data: NMEA

2) Doppler sonar

Manufacturer: FURUNO ELECTRIC CO., LTD.

Model: DS-30

Range: Ship speed: -10.00 - +40.00knot [Cross direction]

-9.99 - +9.99knot [Horizontal direction]

Current direction and speed: 0.0 - 9.9knot [All direction]

Accuracy: Current speed: +-(2.0%+0.2knot)

3) Multi narrow beam echo sounder

Manufacturer: SEABEAM INSTRUMENTS

Model: Sea Beam 2112.004

Frequency: 12kHz

Range: 50 - 11000m

4)Anemometer

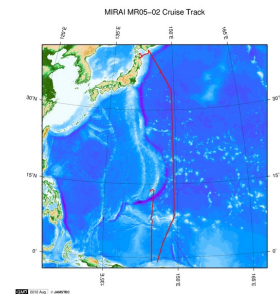
Manufacturer: Koshin Denki Kogyo Co., Ltd.
Model: KE-500
Altitude: 24m (above sea level)
Starting wind speed:2m/s or less
Durability: 90m/s
Accuracy: 10m/s or less +/-0.5m/s
10m/s or more +/-5%

Note

Please see the 'data set' and 'readme' for the detail of the following observation.

Air temperature: Meteorological data
Sea surface temperature:EPCS/TSG
Atmospheric pressure: Meteorological data
Relative humidity: Meteorological data
Water depth: Bathymetry
Current direction/speed: ADCP

Related Information



[Enlarge Image](#)

MR05-02

Ship Name: MIRAI
Period: 2005-05-25 - 2005-07-01
Chief Scientist: Takeshi Kawano (JAMSTEC)
Project Name: [POST-WOCE Hydrography]

Update History

| | |
|------------|-------------------------------------|
| 2014-07-25 | An observation data was registered. |
| 2012-11-25 | An observation data was registered. |

JAMSTEC

[Site Policy](#)
[Privacy Policy](#)
[Application for Data and Samples](#)
[Data Policy](#)

[What's New](#)
[Update History](#)
[Feeds](#)

Lists

[Publication List](#)
[Amount of Public Info.](#)

[Data](#)
[Map Search](#)
[Data Tree](#)
[Detailed Search](#)

Information of the Ships

[NATSUSHIMA](#)
[KAIYO](#)
[YOKOSUKA](#)
[MIRAI](#)
[KAIREI](#)
[CHIKYU](#)
[KAIMEI](#)
[SHINSEI MARU](#)
[HAKUHO MARU](#)

Information of the Submersibles

[KAIKO](#)
[SHINKAI 2000](#)
[SHINKAI 6500](#)
[DEEP TOW](#)
[HYPER-DOLPHIN](#)
[URASHIMA](#)
[YOKOSUKA DEEP TOW](#)
[6K Camera DEEP TOW](#)
[6K Sonar DEEP TOW](#)
[KM-ROV](#)
[POWER GRAB SAMPLER \(SHELL\)](#)
[POWER GRAB SAMPLER \(CLOW\)](#)
[BMS](#)

Go to a Cruise Information

Cruise ID:

Go to a Dive Information

Dive ID:

Copyright 2011 Japan Agency for Marine-Earth Science and Technology



JAMSTEC 国立研究開発法人
海洋研究開発機構
JAPAN AGENCY FOR MARINE-EARTH SCIENCE AND TECHNOLOGY

MIRAI MR05-02 Navigation

Last Modified: 2014-07-25

[ReadMe](#) | [Observation Data](#) | [Data Format](#)

 Cruise ID: [MR05-02](#)

Navigation: Processed (DMO)-QCed

 Data Policy: [JAMSTEC](#)

Navigation Qced

The one record of this data has 117 bytes of data part and 12 bytes of flag part.

Data part

| No. | Column | Content | Format | Unit | Remarks |
|-----|-----------|----------------------------------|---------------|-----------------|--|
| 1 | 1 - 8 | Date | i4,i2,i2 | | YYYYMMDD (UTC) |
| 2 | 10 - 15 | Time | i2,i2,i2 | | hhmmss (UTC) |
| 3 | 17 - 19 | Datum | a3 | | W84:WGS84 TD_:TOKYO DATUM |
| 4 | 21 - 31 | Latitude | i2,x1,f7.4,a1 | degree - minute | dd-mm.mmmN(S) |
| 5 | 33 - 44 | Longitude | i3,x1,f7.4,a1 | degree - minute | ddd-mm.mmmE(W) |
| 6 | 46 - 49 | Ship speed (Ground) | f4.1 | knot | |
| 7 | 51 - 55 | Course (Ground) | f5.1 | degree | |
| 8 | 57 - 60 | Ship speed (Water) | f4.1 | knot | *1 |
| 9 | 62 - 66 | Gyro | f5.1 | degree | |
| 10 | 68 - 72 | Air temperature | f5.1 | deg-C | |
| 11 | 74 - 78 | Sea surface temperature (SST) | f5.2 | deg-C | |
| 12 | 80 - 85 | Atmospheric pressure | f6.1 | hPa | Adjusted to the sea surface level |
| 13 | 87 - 89 | Relative humidity | i3 | % | |
| 14 | 91 - 93 | True wind direction | i3 | degree | Averaged over the previous 6 seconds *2 |
| 15 | 95 - 98 | True wind speed | f4.1 | m/sec | Averaged over the previous 6 seconds *2 No anemometer height adjustment |
| 16 | 100 - 106 | Depth | f7.1 | m | |
| 17 | 108 - 112 | Current direction | f5.1 | degree | Calculated value |
| 18 | 114 - 117 | Current speed | f4.1 | knot | Calculated value |

Flag part

| No. | Column | Description | Format | Remarks |
|-----|--------|-------------|--------|---|
| 19 | 119 | Flag 1 | i1 | QC flag for 'Latitude' and 'Longitude' |
| 20 | 120 | Flag 2 | i1 | QC flag for 'Ship speed (Ground)' |
| 21 | 121 | Flag 3 | i1 | QC flag for 'Course (Ground)' |
| 22 | 122 | Flag 4 | i1 | QC flag for 'Ship speed (Water)' |
| 23 | 123 | Flag 5 | i1 | QC flag for 'Gyro' |
| 24 | 124 | Flag 6 | i1 | QC flag for 'Air temperature' |
| 25 | 125 | Flag 7 | i1 | QC flag for 'Sea Surface Temperature (SST)' |
| 26 | 126 | Flag 8 | i1 | QC flag for 'Atmospheric pressure' |
| 27 | 127 | Flag 9 | i1 | QC flag for 'Relative humidity' |
| 28 | 128 | Flag 10 | i1 | QC flag for 'Wind direction' and 'Wind speed' |
| 29 | 129 | Flag 11 | i1 | QC flag for 'Depth' |
| 30 | 130 | Flag 12 | i1 | QC flag for 'Current direction' and 'Current speed' |

*1 The plus and minus sign of No.8 [Ship speed (Water)] about R/V KAIREI indicates the velocity of direction of a bow and stem.

*2 No.14 [True wind direction] and No.15 [True wind speed] about R/V SHINSEI MARU are instantaneous value.

* The terminator of each record is 'CR+LF' code.

* Missing value and format error value are filled with '9'.

Definition of Quality Control Flags

Flag 1 : Longitude and Latitude

- 1 - accepted
- 2 - questionable value
- 4 - failed in location check
- 9 - system error or input error

Flag 2 : Ship speed (ground)

- 1 - accepted
- 2 - questionable value
- 4 - failed range check (under 20 knots)
- 9 - system error or input error

Flag 3 : Course (ground)

- 1 - accepted
- 2 - questionable value
- 4 - failed range check (0 ~ 360 degree)
- 9 - system error or input error

Flag 4 : Ship speed (water)

- 1 - accepted
- 4 - failed range check (under 20 knots)
- 9 - system error or input error

9 - system error or input error

Flag 5 : Gyro

- 1 - accepted
- 4 - failed range check (0 ~ 360 degree)
- 9 - system error or input error

Flag 6 : Air temperature

- 3 - assumed good*
- 4 - failed range check (-20 ~ 40 degC)
- 9 - system error or input error

Flag 7 : Sea surface temperature

- 3 - assumed good*
- 4 - failed range check (-3 ~ 37 degC)
- 9 - system error or input error

Flag 8 : Atmospheric pressure

- 3 - assumed good*
- 4 - failed range check (890 ~ 1040 hPa)
- 9 - system error or input error

Flag 9 : Relative humidity

- 3 - assumed good*
- 4 - failed range check (0 ~ 100 %)
- 9 - system error or input error

Flag 10 : Wind direction and wind speed

- 3 - assumed good*
- 4 - failed range check (0 ~ 360 degree : wind direction, 0 ~ 60 m/s : wind speed)
- 9 - system error or input error

Flag 11 : Depth

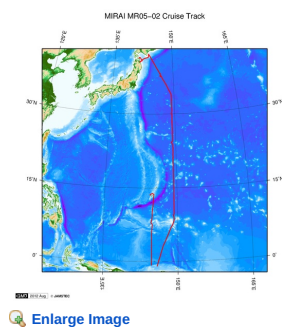
- 3 - assumed good*
- 4 - failed range check (4 ~ 11000 m)
- 9 - system error or input error

Flag 12 : Current direction and current speed

- 3 - assumed good*
- 4 - failed range check (0 ~ 360 degree : current direction, 0 ~ 5 knots : current speed)
- 9 - system error or input error

* 'assumed good' means that this data passed range check but may contains leap or inappropriate zero.

Related Information



MR05-02

Ship Name: MIRAI
Period: 2005-05-25 - 2005-07-01
Chief Scientist: Takeshi Kawano (JAMSTEC)
Project Name: [POST-WOCE Hydrography]

Update History

| | |
|------------|------------------------------------|
| 2014-07-25 | An observation data was registerd. |
| 2012-11-25 | An observation data was registerd. |

JAMSTEC

[Site Policy](#)
[Privacy Policy](#)
[Application for Data and Samples](#)
[Data Policy](#)

[What's New](#)
[Update History](#)
[Feeds](#)

[Lists](#)
[Publication List](#)
[Amount of Public Info.](#)
[Data](#)
[Map Search](#)
[Data Tree](#)
[Detailed Search](#)

Information of the Ships

[NATSUSHIMA](#)
[KAIYO](#)
[YOKOSUKA](#)
[MIRAI](#)
[KAIREI](#)
[CHIKYU](#)
[KAIMEI](#)
[SHINSEI MARU](#)
[HAKUHO MARU](#)

Information of the Submersibles

[KAIKO](#)
[SHINKAI 2000](#)
[SHINKAI 6500](#)
[DEEP TOW](#)
[HYPER-DOLPHIN](#)
[URASHIMA](#)
[YOKOSUKA DEEP TOW](#)
[6K Camera DEEP TOW](#)
[6K Sonar DEEP TOW](#)
[KM-ROV](#)
[POWER GRAB SAMPLER \(SHELL\)](#)
[POWER GRAB SAMPLER \(CLOW\)](#)
[BMS](#)

Go to a Cruise Information

Cruise ID:

Go to a Dive Information

Dive ID:



MIRAI MR05-02 Navigation

Last Modified: 2014-07-25

[ReadMe](#) [Observation Data](#) [Data Format](#)

Cruise ID: **MR05-02**

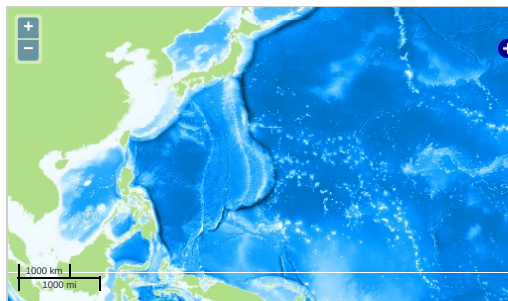
Navigation: Processed (DMO)-QCed

Data Policy: **JAMSTEC**

Observation Items:

Science Keywords:

Observation Map

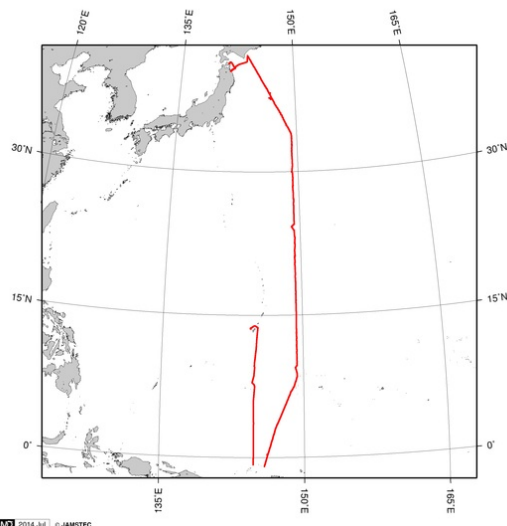


... Observation Line ... Navigation ... Observation, Dive Point, Hole

Imagery reproduced from ...

Figures

MR05-02: Navigation



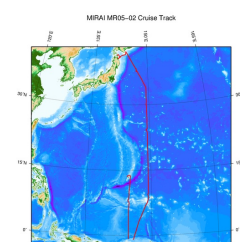
Data List

[Add to Basket](#)

File names

☐ MR05-02.dat

Related Information



[Enlarge Image](#)

MR05-02

Ship Name: MIRAI

Period: 2005-05-25 - 2005-07-01

Chief Scientist: Takeshi Kawano (JAMSTEC)

Project Name: [POST-WOCE Hydrography]

Update History

| | |
|------------|-------------------------------------|
| 2014-07-25 | An observation data was registered. |
| 2012-11-25 | An observation data was registered. |

JAMSTEC

Site Policy
Privacy Policy
Application for Data and Samples
Data Policy

What's New
Update History
Feeds

Lists
Publication List
Amount of Public Info.

Data
Map Search
Data Tree
Detailed Search

Information of the Ships
NATSUSHIMA
KAIYO
YOKOSUKA
MIRAI
KAIREI
CHIKYU
KAIMEI
SHINSEI MARU
HAKUHO MARU

Information of the Submersibles
KAIKO
SHINKAI 2000
SHINKAI 6500
DEEP TOW
HYPER-DOLPHIN
URASHIMA
YOKOSUKA DEEP TOW
6K Camera DEEP TOW
6K Sonar DEEP TOW
KM-ROV
POWER GRAB SAMPLER (SHELL)
POWER GRAB SAMPLER (CLOW)
BMS

Go to a Cruise Information

Cruise ID:

Go to a Dive Information

Dive ID: