

## MIRAI MR13-04 Total Magnetic Intensity (TMI)

Last Modified: 2019-06-26

[ReadMe](#) [Observation Data](#) [Data Format](#)

Cruise ID: **MR13-04**

Total Magnetic Intensity (TMI): Processed (DMO)-Corrected

Data Policy: [JAMSTEC](#)

Observation Items: Total magnetic field intensity

Science Keywords:

OCEANS > MARINE GEOPHYSICS > MARINE  
MAGNETICS  
SOLID EARTH > GEOMAGNETISM

Cruise Report

[http://www.godac.jamstec.go.jp/catalog/data/doc\\_catalog/media/MR13-04\\_all.pdf](http://www.godac.jamstec.go.jp/catalog/data/doc_catalog/media/MR13-04_all.pdf)

### For Using Data

#### Principal Investigator

Data Management Office

#### Use Constraints

See [Terms and Conditions](#) about constrain of use.

#### Data Citation

See [Terms and Conditions](#) about data citation.

### Period (UTC)

2013-07-20 20:54 ~ 2013-07-21 19:09

### Instrument

Instrument:

Cesium magnetometer



### Overview

The cesium vapor magnetometer measures the total magnetic by using electron paramagnetic resonance. In order to avoid the ship's magnetization, the instrument is towed by the vessel about 400 - 500m. As a quality control, data of low reliability was removed (see section 5. for quality control criteria). Synthetic geomagnetic field values were calculated from IGRF models.

### Measurement System

Manufacturer : Geometrics, inc.

Type : G-882

Measurement range : 20,000 - 100,000 nT

Resolution : 0.002 nT

Accuracy : less than 2 nT

Location : Dry Laboratory

### Data processing

The following corrections and calculations were performed.

(1) International Geomagnetic Reference Field (IGRF)

Synthetic geomagnetic field values are calculated from IGRF 11th generation models by using navigation data ; latitude, longitude and date.

Reference:IAGA Division V-MOD Geomagnetic Field Modeling(<http://www.ngdc.noaa.gov/IAGA/vmod/igrf.html>)

(2) Calculation of the geomagnetic field anomaly

$An = F - Figrf$

An: Total geomagnetic field intensity anomaly

F: Observed total geomagnetic field intensity

Figrf: Synthetic total geomagnetic field intensity from IGRF

(3) Output of the data

Time (UTC)

Latitude (degree)

Longitude (degree)

Observed total magnetic field intensity (nT)

Total geomagnetic field intensity anomaly (nT)

### Quality control of data

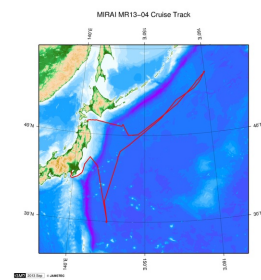
Following criteria were used for removal of data of low reliability:

- Time error (inversion of time, continuation of same timestamps)
- Ground speed of the ship below 1knot or exceeding 20knot
- Total geomagnetic field intensity anomaly exceeding  $\pm 4000nT$
- Spatial gradient of the total geomagnetic field intensity anomaly exceeding  $\pm 300nT/km$

### Note

- (1) File naming rule: Cruise ID\_corr.tmag
- (2) Sampling rate: 1 second(It depends on geomagnetic field intensity and inclination )
- (3) Geodetic system: WGS84
- (4) If you would like the raw data set, please contact us from "Contact Us" above.

## Related Information



[Enlarge Image](#)

### MR13-04

Ship Name: MIRAI

Period: 2013-07-09 - 2013-07-29

Chief Scientist: Makio Honda (JAMSTEC)

Project Name: [Station K2, Station S1, Station KEO, Station KNOT]

Proposal ▶ Change in material cycles and ecosystem by the climate change and its feedback  
Title:

## Update History

2019-06-26	An observation data was registered.
2018-06-29	An observation data was registered.
2018-05-12	An observation data was registered.
2015-07-29	An observation data was registered.

### JAMSTEC

[Site Policy](#)

[Privacy Policy](#)

[Application for Data and Samples](#)

[Data Policy](#)

[What's New](#)

[Update History](#)

[Feeds](#)

### Lists

[Publication List](#)

[Amount of Public Info.](#)

### Data

[Map Search](#)

[Data Tree](#)

[Detailed Search](#)

### Information of the Ships

[NATSUSHIMA](#)

[KAIYO](#)

[YOKOSUKA](#)

[MIRAI](#)

[KAIREI](#)

[CHIKYU](#)

[KAIMEI](#)

[SHINSEI MARU](#)

[HAKUHO MARU](#)

### Information of the Submersibles

[KAIKO](#)

[SHINKAI 2000](#)

[SHINKAI 6500](#)

[DEEP TOW](#)

[HYPER-DOLPHIN](#)

[URASHIMA](#)

[YOKOSUKA DEEP TOW](#)

[6K Camera DEEP TOW](#)

[6K Sonar DEEP TOW](#)

[KM-ROV](#)

[POWER GRAB](#)

[SAMPLER \(SHELL\)](#)

[POWER GRAB](#)

[SAMPLER \(CLOW\)](#)

[BMS](#)

### Go to a Cruise Information

Cruise ID:

### Go to a Dive Information

Dive ID:

Copyright 2011 Japan Agency for Marine-Earth Science and Technology



**JAMSTEC**

国立研究開発法人  
海洋研究開発機構  
JAPAN AGENCY FOR MARINE-EARTH SCIENCE AND TECHNOLOGY

## MIRAI MR13-04 Total Magnetic Intensity (TMI)

Last Modified: 2019-06-26

[ReadMe](#) [Observation Data](#) [Data Format](#)

Cruise ID: [MR13-04](#)

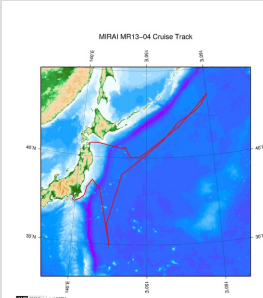
Total Magnetic Intensity (TMI): Processed (DMO)-Corrected

Data Policy: [JAMSTEC](#)

### TMI Corrected

No.	Column	Content	Format	Unit	Remarks
1	1 - 8	Date	i4,i2,i2		YYYYMMDD (UTC)
2	10 -15	Time	i2,i2,i2		hhmmss (UTC)
3	17 -25	Latitude	f9.5	degree	No sign for the northern hemisphere. Negative for the southern hemisphere.
4	27 -36	Longitude	f10.5	degree	No sign for eastern hemisphere. Negative for the western hemisphere.
5	38 -45	Observed total geomagnetic field intensity	f8.1	nT	
6	46 -53	Total geomagnetic field intensity anomaly	f7.1	nT	

### Related Information



[Enlarge Image](#)

#### MR13-04

Ship Name: MIRAI

Period: 2013-07-09 - 2013-07-29

Chief Scientist: Makio Honda (JAMSTEC)

Project Name: [Station K2, Station S1, Station KEO, Station KNOT]

Proposal ▶ Change in material cycles and ecosystem by the climate change and its feedback

Title:

### Update History

2019-06-26	An observation data was registered.
2018-06-29	An observation data was registered.
2018-05-12	An observation data was registered.
2015-07-29	An observation data was registered.

**JAMSTEC**  
[Site Policy](#)  
[Privacy Policy](#)  
[Application for Data and Samples](#)  
[Data Policy](#)  
**What's New**  
[Update History](#)  
[Feeds](#)

**Lists**  
[Publication List](#)  
[Amount of Public Info.](#)

**Data**  
[Map Search](#)  
[Data Tree](#)  
[Detailed Search](#)

**Information of the Ships**  
[NATSUSHIMA](#)  
[KAIYO](#)  
[YOKOSUKA](#)  
[MIRAI](#)  
[KAIREI](#)  
[CHIKYU](#)  
[KAIMEI](#)  
[SHINSEI MARU](#)  
[HAKUHO MARU](#)

**Information of the Submersibles**  
[KAIKO](#)  
[SHINKAI 2000](#)  
[SHINKAI 6500](#)  
[DEEP TOW](#)  
[HYPER-DOLPHIN](#)  
[URASHIMA](#)  
[YOKOSUKA DEEP TOW](#)  
[6K Camera DEEP TOW](#)  
[6K Sonar DEEP TOW](#)  
[KM-ROV](#)  
[POWER GRAB](#)  
[SAMPLER \(SHELL\)](#)  
[POWER GRAB](#)  
[SAMPLER \(CLOW\)](#)  
[BMS](#)

#### Go to a Cruise Information

Cruise ID:

#### Go to a Dive Information

Dive ID:

## MIRAI MR13-04 Total Magnetic Intensity (TMI)

Last Modified: 2019-06-26

[ReadMe](#) [Observation Data](#) [Data Format](#)

Cruise ID: [MR13-04](#)

Total Magnetic Intensity (TMI): Processed (DMO)-Corrected

Data Policy: [JAMSTEC](#)

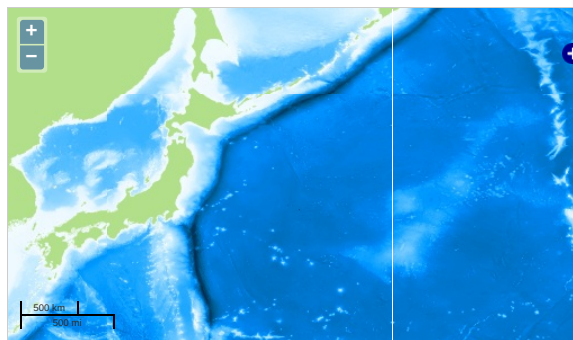
Observation Items: Total magnetic field intensity

Science Keywords:

OCEANS > MARINE GEOPHYSICS > MARINE MAGNETICS

SOLID EARTH > GEOMAGNETISM

### Observation Map



— ... Observation Line — ... Navigation ● ... Observation, Dive Point, Hole

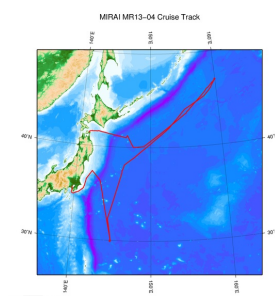
Imagery reproduced from ...

### Data List

File names

☐ MR13-04\_corr.tmag

### Related Information



[Enlarge Image](#)

#### MR13-04

Ship Name: MIRAI

Period: 2013-07-09 - 2013-07-29

Chief Scientist: Makio Honda (JAMSTEC)

Project Name: [Station K2, Station S1, Station KEO, Station KNOT]

Proposal ▶ Change in material cycles and ecosystem by the climate change and its feedback

Title:

### Update History

2019-06-26	An observation data was registerd.
2018-06-29	An observation data was registerd.
2018-05-12	An observation data was registerd.
2015-07-29	An observation data was registerd.

#### JAMSTEC

[Site Policy](#)  
[Privacy Policy](#)  
[Application for Data and Samples](#)  
[Data Policy](#)  
  
[What's New](#)  
[Update History](#)  
[Feeds](#)

#### Lists

[Publication List](#)  
[Amount of Public Info.](#)  
  
[Data](#)  
[Map Search](#)  
[Data Tree](#)  
[Detailed Search](#)

#### Information of the Ships

[NATSUSHIMA](#)  
[KAIYO](#)  
[YOKOSUKA](#)  
[MIRAI](#)  
[KAIREI](#)  
[CHIKYU](#)  
[KAIMEI](#)  
[SHINSEI MARU](#)  
[HAKUHO MARU](#)

#### Information of the Submersibles

[KAICO](#)  
[SHINKAI 2000](#)  
[SHINKAI 6500](#)  
[DEEP TOW](#)  
[HYPER-DOLPHIN](#)  
[URASHIMA](#)  
[YOKOSUKA DEEP TOW](#)  
[6K Camera DEEP TOW](#)  
[6K Sonar DEEP TOW](#)  
[KM-ROV](#)  
[POWER GRAB SAMPLER \(SHELL\)](#)  
[POWER GRAB SAMPLER \(CLOW\)](#)  
[BMS](#)

#### Go to a Cruise Information

Cruise ID:

#### Go to a Dive Information

Dive ID: