

## MIRAI MR12-02 Leg2 Underway Thermosalinograph

Last Modified: 2015-06-30

[ReadMe](#) [Observation Data](#) [Data Format](#)

Cruise ID: [MR12-02 Leg2](#)

Underway Thermosalinograph: Processed (PI)

Data Policy: [JAMSTEC](#)

Observation Items: Temperature, Salinity, Dissolved oxygen, Fluorescence, Chlorophyll

Science Keywords:

OCEANS > OCEAN CHEMISTRY > OXYGEN  
OCEANS > OCEAN CHEMISTRY > SALINITY  
OCEANS > OCEAN CHEMISTRY > CHLOROPHYLL  
OCEANS > SALINITY/DENSITY > SALINITY  
OCEANS > OCEAN > SEA SURFACE  
OCEANS TEMPERATURE TEMPERATURE  
OCEANS > OCEAN OPTICS > FLUORESCENCE

Cruise Report

[http://www.godac.jamstec.go.jp/catalog/data/doc\\_catalog/media/MR12-02\\_leg1-2\\_all.pdf](http://www.godac.jamstec.go.jp/catalog/data/doc_catalog/media/MR12-02_leg1-2_all.pdf)

### For Using Data

#### Principal Investigator

Masahide Wakita (JAMSTEC)

Hiroshi Uchida (JAMSTEC)

#### Use Constraints

See [Terms and Conditions](#) about constrain of use.

#### Data Citation

See [Terms and Conditions](#) about data citation.

### Instrument

Instrument:

Continuous sea surface water monitoring system (MR10-04 Leg1 - MR14-02 )



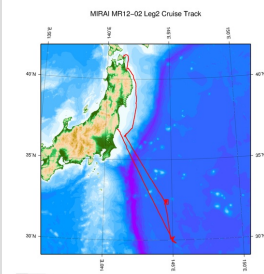
### Data processing

- Missing of the position data (latitude and longitude) was linearly interpolated.
- Data whose difference from the median of 3 data points was more than the threshold (0.1 degrees C for temperature and 0.5 for salinity) was replaced by the median.
- Median filter with a window of 3 data points was applied to the fluorometer data.
- Hamming filter with a window of 15 data points was applied to the RINKO and fluorometer data.
- Salinity data were corrected by using sampled salinity data as follows.  
Corrected Salinity =  $c0 + c1 \cdot S + c2 \cdot \text{day}$   
where S is uncorrected salinity, day is days from the first data point.  
 $c0 = 3.498286727442702e-02$   
 $c1 = 0.9989313584307571$   
 $c2 = 4.769066106931255e-4$
- Dissolved oxygen data were corrected by using sampled dissolved oxygen data as follows.  
Corrected Oxygen =  $d0 + d1 \cdot O + d2 \cdot T + d3 \cdot \text{day}$   
where O is uncorrected dissolved oxygen, day is days from the first data point and T is temperature.  
 $d0 = 10.82923488169132$   
 $d1 = 0.9600754390184659$   
 $d2 = 2.442590575666692e-02$   
 $d3 = 0.1469643668372171$
- Chlorophyll-a was estimated from the fluorometer data by using sampled chlorophyll-a data as follows.  
Estimated chlorophyll-a =  $e0 + e1 \cdot FI$   
where FI is fluorescence.  
 $e0 = -6.183646349826580e-2$   
 $e1 = 7.482197107024714e-2$

### About this data

This TSG data includes the data of MR12-02 Leg1 and MR12-02 Leg2.

### Related Information



[Enlarge Image](#)

#### MR12-02 Leg2

Ship Name: MIRAI  
 Period: 2012-06-24 - 2012-07-12  
 Chief Scientist: Makio Honda (JAMSTEC)  
 Project Name: [Station S1, Station KEO]  
 Proposal ▶ Change in material cycles and ecosystem by the climate change and its feedback  
 Title:

#### Update History

2015-06-30	An observation data was registerd.
2015-06-04	An observation data was registerd.
2014-03-12	An observation data was registerd.
2013-04-02	An observation data was registerd.

#### JAMSTEC

Site Policy  
 Privacy Policy  
 Application for Data and Samples  
 Data Policy  
 What's New  
 Update History  
 Feeds

#### Lists

Publication List  
 Amount of Public Info.

#### Data

Map Search  
 Data Tree  
 Detailed Search

#### Information of the Ships

NATSUSHIMA  
 KAIYO  
 YOKOSUKA  
 MIRAI  
 KAIREI  
 CHIKYU  
 KAIMEI  
 SHINSEI MARU  
 HAKUHO MARU

#### Information of the Submersibles

KAIKO  
 SHINKAI 2000  
 SHINKAI 6500  
 DEEP TOW  
 HYPER-DOLPHIN  
 URASHIMA  
 YOKOSUKA DEEP TOW  
 6K Camera DEEP TOW  
 6K Sonar DEEP TOW  
 KM-ROV  
 POWER GRAB  
 SAMPLER (SHELL)  
 POWER GRAB  
 SAMPLER (CLOW)  
 BMS

#### Go to a Cruise Information

Cruise ID:

#### Go to a Dive Information

Dive ID:

Copyright 2011 Japan Agency for Marine-Earth Science and Technology



**JAMSTEC** 国立研究開発法人  
 海洋研究開発機構  
 JAPAN AGENCY FOR MARINE-EARTH SCIENCE AND TECHNOLOGY

## MIRAI MR12-02 Leg2 Underway Thermosalinograph

Last Modified: 2015-06-30

ReadMe Observation Data **Data Format**

Cruise ID: [MR12-02 Leg2](#)

Underway Thermosalinograph: Processed (PI)

Data Policy: [JAMSTEC](#)

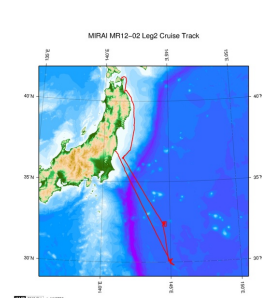
### DATA Format

Column No.	Column Heading Mnemonic	Units Mnemonic	Reporting Precision FORTTRAN Format	Comments
1	EXPCODE		A12	Expedition code
2	DATE		I8	Date (YYYYMMDD)
3	TIME	UTC	I4	Time (HHMM)
4	LATITUDE	DEG	F10.5	Latitude
5	LONGITUDE	DEG	F10.5	Longitude
6	SPEED	KNOT	F6.1	Ship speed
7	FLOW	L/MIN	F6.1	Flow rate
8	INTAKE-TEMPERATURE	ITS-90	F9.4	Temperature of bottom of the ship (SBE 38)
9	INTAKE-TEMPERATURE_FLAG		I1	see flag definition below
10	TSG-TEMPERATURE	ITS-90	F9.4	Thermosalinograph temperature (SBE 45)
11	TSG-TEMPERATURE_FLAG		I1	see flag definition below
12	TSG-SALINITY	PSS-78	F9.4	Thermosalinograph salinity (SBE 45)
13	TSG-SALINITY_FLAG		I1	see flag definition below
14	SALINITY	PSS-78	F9.4	Sampled salinity
15	SALINITY_FLAG		I1	see flag definition below
16	TSG-OXYGEN	UMOL/KG	F9.2	Oxygen sensor RINKO-II
17	TSG-OXYGEN_FLAG		I1	see flag definition below
18	OXYGEN	UMOL/KG	F9.2	Sampled oxygen
19	OXYGEN_FLAG		I1	see flag definition below
20	FLUORESCENCE	RFU	F9.2	Fluorometer C3 (primary)
21	FLUORESCENCE_FLAG		I1	see flag definition below
22	TSG-CHLOROPHYLL-A	MG/CUM	F9.3	Chlorophyll-a estimated from the fluorometer
23	TSG-CHLOROPHYLL-A_FLAG		I1	see flag definition below
24	CHLOROPHYLL-A	MG/CUM	F9.2	Sampled chlorophyll-a
25	CHLOROPHYLL-A_FLAG		I1	see flag definition below

### Flag definition

- 1: not corrected
- 2: corrected for the sensor data or acceptable for the sampled data
- 3: questionable measurement
- 4: bad measurement
- 6: interpolated
- 8: low-pass filtered
- 9: missing data (missing value is -999)

### Related Information



[Enlarge Image](#)

#### MR12-02 Leg2

Ship Name: MIRAI  
Period: 2012-06-24 - 2012-07-12  
Chief Scientist: Makio Honda (JAMSTEC)  
Project Name: [Station S1, Station KEO]  
Proposal ▶ Change in material cycles and ecosystem by the climate change and its feedback  
Title:

### Update History

2015-06-30	An observation data was registered.
2015-06-04	An observation data was registered.
2014-03-12	An observation data was registered.
2013-04-02	An observation data was registered.

JAMSTEC  
Site Policy  
Privacy Policy  
Application for Data and Samples  
Data Policy  
What's New  
Update History  
Feeds

Lists  
Publication List  
Amount of Public Info.  
Data  
Map Search  
Data Tree  
Detailed Search

Information of the Ships  
NATSUSHIMA  
KAIYO  
YOKOSUKA  
MIRAI  
KAIREI  
CHIKYU  
KAIMEI  
SHINSEI MARU  
HAKUHO MARU

Information of the Submersibles  
KAIKO  
SHINKAI 2000  
SHINKAI 6500  
DEEP TOW  
HYPER-DOLPHIN  
URASHIMA  
YOKOSUKA DEEP TOW  
6K Camera DEEP TOW  
6K Sonar DEEP TOW  
KM-ROV  
POWER GRAB  
SAMPLER (SHELL)  
POWER GRAB  
SAMPLER (CLOW)

#### Go to a Cruise Information

Cruise ID:  Go

#### Go to a Dive Information

Dive ID:  Go



## MIRAI MR12-02 Leg2 Underway Thermosalinograph

Last Modified: 2015-06-30

[ReadMe](#) [Observation Data](#) [Data Format](#)

Cruise ID: [MR12-02 Leg2](#)

Underway Thermosalinograph: Processed (PI)

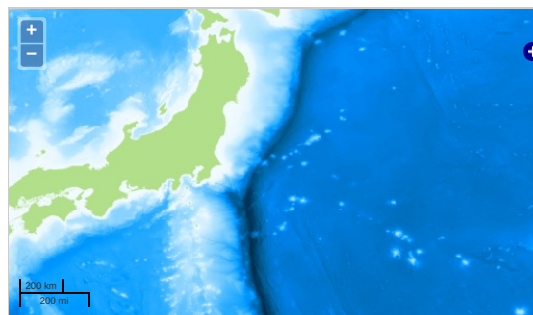
Data Policy: [JAMSTEC](#)

Observation Items: Temperature, Salinity, Dissolved oxygen, Fluorescence, Chlorophyll

Science Keywords:

OCEANS > OCEAN CHEMISTRY > OXYGEN  
OCEANS > OCEAN CHEMISTRY > SALINITY  
OCEANS > OCEAN CHEMISTRY > CHLOROPHYLL  
OCEANS > SALINITY/DENSITY > SALINITY  
OCEANS > OCEAN > SEA SURFACE  
OCEANS TEMPERATURE TEMPERATURE  
OCEANS > OCEAN OPTICS > FLUORESCENCE

### Observation Map



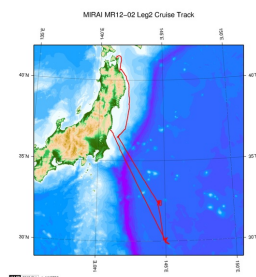
— ... Observation Line — ... Navigation ● ... Observation, Dive Point, Hole

### Data List

File names

☐ 49NZ20120604\_tsg.csv

### Related Information



[Enlarge Image](#)

#### MR12-02 Leg2

Ship Name: MIRAI  
Period: 2012-06-24 - 2012-07-12  
Chief Scientist: Makio Honda (JAMSTEC)  
Project Name: [Station S1, Station KEO]  
Proposal ▶ Change in material cycles and ecosystem by the climate change and its feedback  
Title:

### Update History

2015-06-30	An observation data was registered.
2015-06-04	An observation data was registered.
2014-03-12	An observation data was registered.
2013-04-02	An observation data was registered.

JAMSTEC  
[Site Policy](#)  
[Privacy Policy](#)  
[Application for Data and Samples](#)  
[Data Policy](#)  
**What's New**  
[Update History](#)  
[Feeds](#)

**Lists**  
[Publication List](#)  
[Amount of Public Info.](#)  
**Data**  
[Map Search](#)  
[Data Tree](#)  
[Detailed Search](#)

**Information of the Ships**  
NATSUSHIMA  
KAIYO  
YOKOSUKA  
MIRAI  
KAIREI  
CHIKYU  
KAIMEI  
SHINSEI MARU  
HAKUHO MARU

**Information of the Submersibles**  
KAIKO  
SHINKAI 2000  
SHINKAI 6500  
DEEP TOW  
HYPER-DOLPHIN  
URASHIMA  
YOKOSUKA DEEP TOW  
6K Camera DEEP TOW  
6K Sonar DEEP TOW  
KM-ROV  
POWER GRAB  
SAMPLER (SHELL)  
POWER GRAB  
SAMPLER (CLOW)  
BMS

#### Go to a Cruise Information

Cruise ID:

#### Go to a Dive Information

Dive ID: