

## KAIREI KR04-13 Leg2 Shipboard Three Component Magnetometer (STCM)

Last Modified: 2019-06-21

[ReadMe](#) [Observation Data](#) [Data Format](#)

Cruise ID: [KR04-13 Leg2](#)

Shipboard Three Component Magnetometer (STCM): Processed (DMO)-Corrected

Data Policy: [JAMSTEC](#)

Observation Items: X, Y and Z component of geomagnetic field anomaly, Absolute value of geomagnetic field anomaly

Science Keywords:

OCEANS > MARINE GEOPHYSICS > MARINE MAGNETICS  
SOLID EARTH > GEOMAGNETISM

Cruise Report

[http://www.godac.jamstec.go.jp/catalog/data/doc\\_catalog/media/JAM\\_RandD02\\_01.pdf](http://www.godac.jamstec.go.jp/catalog/data/doc_catalog/media/JAM_RandD02_01.pdf)

### For Using Data

#### Principal Investigator

Data Management Office

#### Use Constraints

See [Terms and Conditions](#) about constrain of use.

#### Data Citation

See [Terms and Conditions](#) about data citation.

### Period (UTC)

2004-10-21 23:56 – 2004-10-28 23:42

### Instrument

Instrument:

3 component magnetometer



### Overview

The data provided is for corrected three component geomagnetic field anomalies. Three-axes flux-gate sensors with ring-cored coils were fixed on the roof of the bridge.

They measure the following items :

- h-component : along track line component, positive for the bow direction pitch.
- s-component : across track line component, positive for the starboard side roll.
- v-component : vertical component, positive for the downward direction.

The effect of ship motion was eliminated by roll and pitch data which was provided by a tilt sensor. The apparent magnetic influence can be detected through a "Figure of 8 turn"(a pair of clockwise and anti-clockwise turns) on each cruise. If no Figure of 8 turn on the cruise was completed, the latest Figure of 8 turn from the previous cruise was applied (see section 4.). As a quality control, data of low reliability was removed (see section 5. for quality control criteria).

Synthetic geomagnetic field values were calculated from IGRF models.

### Measurement System

#### (1) Magnetometer

Manufacturer : Tierra Technica Ltd.  
Type : SFG1214  
Measurement range :  $\pm 100,000$  nT  
Accuracy : less than 100 nT  
Resolution : 1 nT  
Location : No.2 Laboratory (Dry laboratory)

#### (2) Magnetic Sensor

Manufacturer : Tierra Technica Ltd.  
Form : flux-gate sensors with ring-cored coils  
Location : Compass deck

#### (3) Attitude sensor

Manufacturer : Tierra Technica Ltd.  
Type : TVM-4  
Measurement range :  $\pm 45$  degree  
Accuracy :  $\pm 0.2$  degree (<30 degree)  
Resolution : 0.0055 degree / LSB  
Location : Gravimeter Room

#### (4) Gyro compass

Manufacturer : Yokogawa Denshikiki Co.,Ltd.  
Type : CMZ500  
Follow-Up Speed : 12 degree / sec  
Accuracy :  $\pm 0.2$  degree \*Secant(Lat.)  
Location : Bridge deck

Direction of the Figure of 8 turn

#### Duration of the Figure of 8 turn

In KR04-08 cruise

Date (UTC)

2004/06/14 07:28:00 - 2004/06/14 07:41:00

2004/06/22 05:02:01 - 2004/06/22 05:21:00

#### Data processing

The following corrections and calculations were performed.

(1) Ship magnetization correction

$$Hob = ARPYF + H_p \text{ ---(i)}$$

Hob: Observed magnetic field vector (Ship coordinates)

A: Effect of induced magnetization of the ship

R: Matrix of rotation due to the roll

P: Matrix of rotation due to the pitch

Y: Matrix of rotation due to the heading

F: Geomagnetic field vector

H<sub>p</sub>: Ship's permanent magnetic moment

Following the equation(i), we calculate the geomagnetic field F.

$$RPYF = BHob + Hbp \text{ ---(ii)}$$

B: coefficient of Figure of 8 turn

Hbp: Permanent magnetic field vector of the ship

Reference: Isezaki,N., A new shipboard three-component magnetometer, GEOPHYSICS. VOL.51,NO10(1986);P1992-1998

(2) International Geomagnetic Reference Field (IGRF)

Synthetic geomagnetic field values are calculated from IGRF 11th Generation models by using navigation data ; latitude, longitude and date.

Reference: IAGA Division V-MOD Geomagnetic Field Modeling[<http://www.ngdc.noaa.gov/IAGA/vmod/igrf.html>]

(3) Calculation of the geomagnetic field anomaly

$$An = F - Figrf$$

An: Geomagnetic field anomaly vector

F: Geomagnetic field vector

Figrf: Synthetic geomagnetic field vector from IGRF

(4) Quality control of data

Following criteria were used for removal of data of low reliability:

- Time error (inversion of time, continuation of same timestamps)
- Summation of the difference of heading by one second exceeding 20 degree per 5 minutes
- Ground speed of the ship below 3knot or exceeding 20knot
- X, Y, or Z component of geomagnetic field anomaly exceeding  $\pm 4000\text{nT}$

(5) Filtering of the geomagnetic field anomaly

Due to the residual undulation of the ship, a 120 second length Gaussian filter was applied for each component of the geomagnetic field anomaly data.

(6) Output of the data

Time (UTC)

Latitude (degree)

Longitude (degree)

X: Northward (positive on the north) component of geomagnetic field anomaly (nT)

Y: Eastward (positive on the east) component of geomagnetic field anomaly (nT)

Z: Vertical (positive for downward) component of geomagnetic field anomaly (nT)

T: Absolute value of geomagnetic field anomaly (nT)

#### Coefficient of the Figure of 8 turn and Permanent magnetic field vector of the ship

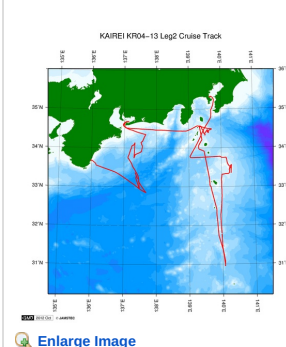
This coefficient was calculated from the Figure of 8 turn (see above)

	1.0870	0.0829	-0.0070		-2009.1892
B=	-0.0896	1.2958	-0.0081	Hbp=	-6043.2114
	-0.0281	0.0039	0.8765		-8126.3720

#### Note

- (1) File naming rule: Cruise ID\_corr.stcm
- (2) Sampling rate: 10 seconds
- (3) Geodetic system: WGS84
- (4) If you would like the raw data set, please contact us from "Contact Us" above.

#### Related Information



#### KR04-13 Leg2

Ship Name: KAIKEI

Period: 2004-10-21 - 2004-10-29

Chief Scientist: Tetsuro Tsuru (JAMSTEC)

[Enlarge Image](#)

#### Update History

2019-06-21	An observation data was registerd.
2018-03-23	An observation data was registerd.
2014-09-23	An observation data was registerd.
2012-11-25	An observation data was registerd.

#### JAMSTEC

[Site Policy](#)  
[Privacy Policy](#)  
[Application for Data and Samples](#)  
[Data Policy](#)

#### What's New

[Update History](#)  
[Feeds](#)

#### Lists

[Publication List](#)  
[Amount of Public Info.](#)

#### Data

[Map Search](#)  
[Data Tree](#)  
[Detailed Search](#)

#### Information of the Ships

[NATSUSHIMA](#)  
[KAIYO](#)  
[YOKOSUKA](#)  
[MIRAI](#)  
[KAIREI](#)  
[CHIKYU](#)  
[KAIMEI](#)  
[SHINSEI MARU](#)  
[HAKUHO MARU](#)

#### Information of the Submersibles

[KAIKO](#)  
[SHINKAI 2000](#)  
[SHINKAI 6500](#)  
[DEEP TOW](#)  
[HYPER-DOLPHIN](#)  
[URASHIMA](#)  
[YOKOSUKA DEEP TOW](#)  
[6K Camera DEEP TOW](#)  
[6K Sonar DEEP TOW](#)  
[KM-ROV](#)  
[POWER GRAB SAMPLER \(SHELL\)](#)  
[POWER GRAB SAMPLER \(CLOW\)](#)  
[BMS](#)

#### Go to a Cruise Information

Cruise ID:

#### Go to a Dive Information

Dive ID:

Copyright 2011 Japan Agency for Marine-Earth Science and Technology



**JAMSTEC**

国立研究開発法人  
海洋研究開発機構

JAPAN AGENCY FOR MARINE-EARTH SCIENCE AND TECHNOLOGY

## KAIREI KR04-13 Leg2 Shipboard Three Component Magnetometer (STCM)

Last Modified: 2019-06-21

[ReadMe](#) [Observation Data](#) [Data Format](#)

Cruise ID: [KR04-13 Leg2](#)

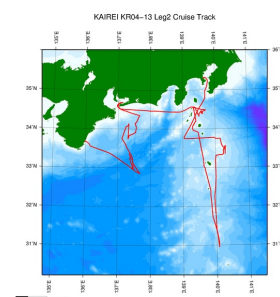
Shipboard Three Component Magnetometer (STCM): Processed (DMO)-Corrected

Data Policy: [JAMSTEC](#)

### STCM Corrected

No.	Column	Content	Format	Unit	Remarks
1	1 - 8	Date	i4,i2,i2		YYYYMMDD (UTC)
2	10 -15	Time	i2,i2,i2		hhmmss (UTC)
3	17 -25	Latitude	f9.5	degree	No sign for the northern hemisphere. Negative for the southern hemisphere.
4	27 -36	Longitude	f10.5	degree	No sign for eastern hemisphere. Negative for the western hemisphere.
5	38 -43	X component of geomagnetic field anomaly	f6.0	nT	Positive on the north
6	45 -50	Y component of geomagnetic field anomaly	f6.0	nT	Positive on the east
7	52 -57	Z component of geomagnetic field anomaly	f6.0	nT	Positive for downward
8	59 -64	Absolute value of geomagnetic field anomaly	f6.0	nT	

### Related Information



[Enlarge Image](#)

#### KR04-13 Leg2

Ship Name: KAIKEI

Period: 2004-10-21 - 2004-10-29

Chief Scientist: Tetsuro Tsuru (JAMSTEC)

### Update History

2019-06-21	An observation data was registerd.
2018-03-23	An observation data was registerd.
2014-09-23	An observation data was registerd.
2012-11-25	An observation data was registerd.

#### JAMSTEC

[Site Policy](#)  
[Privacy Policy](#)  
[Application for Data and Samples](#)  
[Data Policy](#)  
  
[What's New](#)  
[Update History](#)  
[Feeds](#)

#### Lists

[Publication List](#)  
[Amount of Public Info.](#)  
  
[Data](#)  
[Map Search](#)  
[Data Tree](#)  
[Detailed Search](#)

#### Information of the Ships

[NATSUSHIMA](#)  
[KAIYO](#)  
[YOKOSUKA](#)  
[MIRAI](#)  
[KAIREI](#)  
[CHIKYU](#)  
[KAIMEI](#)  
[SHINSEI MARU](#)  
[HAKUHO MARU](#)

#### Information of the Submersibles

[KAICO](#)  
[SHINKAI 2000](#)  
[SHINKAI 6500](#)  
[DEEP TOW](#)  
[HYPER-DOLPHIN](#)  
[URASHIMA](#)  
[YOKOSUKA DEEP TOW](#)  
[6K Camera DEEP TOW](#)  
[6K Sonar DEEP TOW](#)  
[KM-ROV](#)  
[POWER GRAB SAMPLER \(SHELL\)](#)  
[POWER GRAB SAMPLER \(CLOW\)](#)  
[BMS](#)

#### Go to a Cruise Information

Cruise ID:

#### Go to a Dive Information

Dive ID:

## KAIREI KR04-13 Leg2 Shipboard Three Component Magnetometer (STCM)

Last Modified: 2019-06-21

[ReadMe](#) [Observation Data](#) [Data Format](#)

Cruise ID: [KR04-13 Leg2](#)

Shipboard Three Component Magnetometer (STCM): Processed (DMO)-Corrected

Data Policy: [JAMSTEC](#)

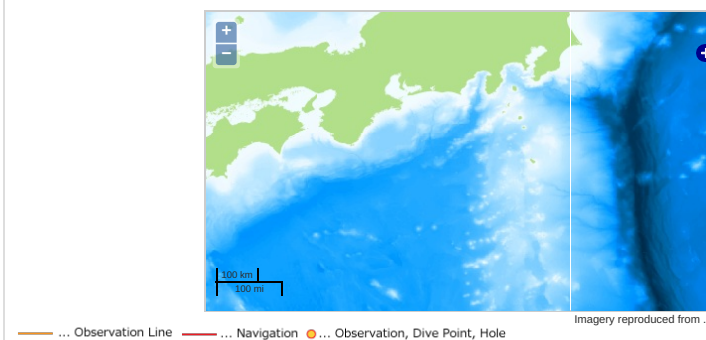
Observation Items: X, Y and Z component of geomagnetic field anomaly, Absolute value of geomagnetic field anomaly

Science Keywords:

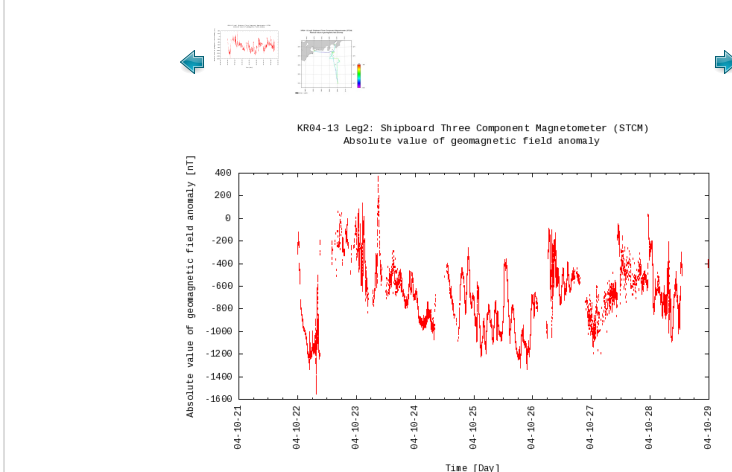
OCEANS > MARINE GEOPHYSICS > MARINE  
MAGNETICS

SOLID EARTH > GEOMAGNETISM

### Observation Map



### Figures



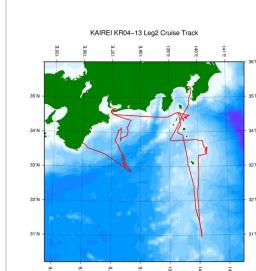
### Data List

[Add to Basket](#)

File names

☐ KR04-13\_leg2\_corr.stcm

### Related Information



[Enlarge Image](#)

#### KR04-13 Leg2

Ship Name: KAIKEI

Period: 2004-10-21 - 2004-10-29

Chief Scientist: Tetsuro Tsuru (JAMSTEC)

### Update History

2019-06-21	An observation data was registered.
2018-03-23	An observation data was registered.
2014-09-23	An observation data was registered.
2012-11-25	An observation data was registered.

JAMSTEC

[Site Policy](#)  
[Privacy Policy](#)

[Application for Data and Samples](#)  
[Data Policy](#)

[What's New](#)  
[Update History](#)  
[Feeds](#)

Lists

[Publication List](#)  
[Amount of Public Info.](#)

Data

[Map Search](#)  
[Data Tree](#)  
[Detailed Search](#)

Information of the Ships

[NATSUSHIMA](#)  
[KAIYO](#)  
[YOKOSUKA](#)  
[MIRAI](#)  
[KAIREI](#)  
[CHIKYU](#)  
[KAIMEI](#)  
[SHINSEI MARU](#)  
[HAKUHO MARU](#)

Information of the Submersibles

[KAIKO](#)  
[SHINKAI 2000](#)  
[SHINKAI 6500](#)  
[DEEP TOW](#)  
[HYPER-DOLPHIN](#)  
[URASHIMA](#)  
[YOKOSUKA DEEP TOW](#)  
[6K Camera DEEP TOW](#)  
[6K Sonar DEEP TOW](#)  
[KM-ROV](#)  
[POWER GRAB SAMPLER \(SHELL\)](#)  
[POWER GRAB SAMPLER \(CLOW\)](#)  
[BMS](#)

Go to a Cruise Information

Cruise ID:

Go to a Dive Information

Dive ID:

