

## MIRAI MR05-01 Conductivity-Temperature-Depth Profiler (CTD)

Last Modified: 2017-06-22

[ReadMe](#) [Observation Data](#) [Data Format](#)

Cruise ID: [MR05-01](#)

Conductivity-Temperature-Depth Profiler (CTD): Processed (DMO)-QCed

Data Policy: [JAMSTEC](#)

Observation Items: Pressure, Temperature, Salinity, Dissolved oxygen

Science Keywords:

OCEANS > OCEAN CHEMISTRY > OXYGEN  
OCEANS > OCEAN TEMPERATURE > WATER TEMPERATURE  
OCEANS > SALINITY/DENSITY > SALINITY

Cruise Report

[http://www.godac.jamstec.go.jp/catalog/data/doc\\_catalog/media/MR05-01\\_all.pdf](http://www.godac.jamstec.go.jp/catalog/data/doc_catalog/media/MR05-01_all.pdf)

### For Using Data

#### Principal Investigator

Data Management Office

#### Use Constraints

See [Terms and Conditions](#) about constrain of use.

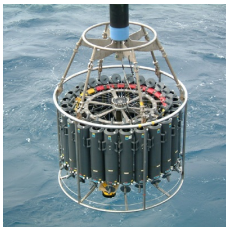
#### Data Citation

See [Terms and Conditions](#) about data citation.

### Instrument

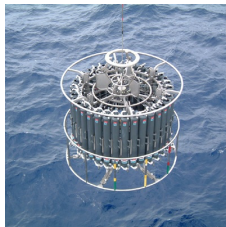
Instrument:

Water sampling system with CTD (30  
litters \* 24 bottles)



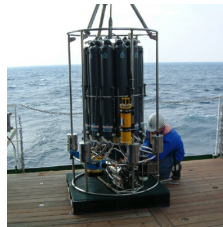
Instrument:

Water sampling system with CTD (12  
litters \* 36 bottles)



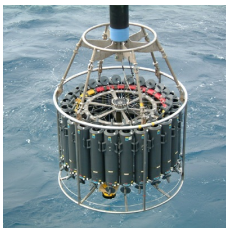
Instrument:

Water sampling system with CTD (12  
litters \* 12 bottles)



Instrument:

Conductivity temperature depth  
measurements (CTD)



### Overview

CTD(Conductivity-Temperature-Depth profiler) is used to observe the vertical profiles of temperature and conductivity.

Usually, this system is operated with multicylinder water sampler.

Observed signal is transmitted from sensor to the operation room on board using wire cable, and electric power is supplied from vessel to sensor.

Details of sensors attached to CTD system for MR05-01 cruise are presented in "System".

The following software, developed and supplied by the Sea-Bird Electronics, Inc., was used in MR05-01.

SEASAVE(ver 5.27b) for data acquisition

SEASOFT(ver 5.27b) for data processing

Data presented on this website is averaged over 1db.

### System

#### • Pressure sensor

Model : SBE9plus, Sea-Bird Electronics,Inc.

Serial number : 42423

Measurement range : up to 10500m

Accuracy : 0.015% F.S.

Resolution : 0.001% F.S.

#### • Pressure sensor

Model : SBE9plus, Sea-Bird Electronics,Inc.

Serial number : 79492

Measurement range : up to 10500m

Accuracy : 0.015% F.S.

Resolution : 0.001% F.S.

#### • Temperature sensor

Model : SBE3, Sea-Bird Electronics,Inc.

Serial number : 031525

Measurement range : -5.0 to +35degC

Accuracy : 0.001degC

- Resolution : 0.0002degC
- Salinity sensor
 

Model : SBE4, Sea-Bird Electronics,Inc.  
 Serial number : 042240  
 Measurement range : 0.0 to 7 S/m  
 Accuracy : 0.0003 S/m  
 Resolution : 0.00004 S/m
  - DO sensor
 

Model : SBE43, Sea-Bird Electronics,Inc.  
 Serial number : 430394  
 Measurement range : 120% of surface saturation  
 Accuracy : 2% of saturation
  - DO sensor
 

Model : SBE43, Sea-Bird Electronics,Inc.  
 Serial number : 430205  
 Measurement range : 120% of surface saturation  
 Accuracy : 2% of saturation

Sensors used in each cast is as follows.

Cast name	Serial number of sensor			
	Pressure	Temperature	Salinity	Dissolved Oxygen
K02m01	42423	031525	042240	430394
K02m04	42423	031525	042240	430394
K02m08	79492	031525	042240	430394
K01m02	79492	031525	042240	430394
K01m04	79492	031525	042240	430394
K01m05	79492	031525	042240	430394
K01m06	79492	031525	042240	430394
35Nm01	79492	031525	042240	430205
35Nm02	79492	031525	042240	430205
35Nm03	79492	031525	042240	430205
KNOTm01	79492	031525	042240	430205
KNOTm02	79492	031525	042240	430205

#### Calibration Information

Calibration Information is as follows.

[Calibration Information](#)

#### Data processing

(1) Data processing sequence for SEASOFT is as follows;

command	function
datcnv	Convert raw data to engineering units, and store converted data in file.
alignctd	Align data relative to pressure(typically used for conductivity, temperature, and oxygen).
wildedit	Mark a data value with badflag to eliminate wild points.
celltm	Perform conductivity thermal mass correction.
filter	Low-pass filter columns of data.
wfilter	Median filter removes spikes of fluorometer data.
section	Extract rows of data from file.
loopedit	Mark a scan with badflag if scan fails pressure reversal or minimum velocity tests.
derive	Calculate oxygen. (with oxygen sensor)
binavg	Average data, basing bins on pressure, depth, scan number, or time range.
derive	Calculate salinity, density, etc..
split	Split data in file into upcast and downcast files.

(2) Quality control

QCed data were added flag according to the NODC (National Oceanographic Data Center) quality control procedure.

- 1) The gradient check of adjacent depth data
- 2) The density inversion check
- 3) The broad range check set up at given ocean space and depth

Please see the site of NODC of the following link for quality control procedure in detail.

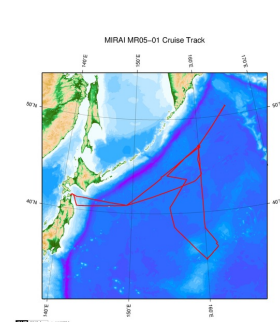
[QUALITY CONTROL AND PROCESSING OF HISTORICAL OCEANOGRAPHIC TEMPERATURE, SALINITY, AND OXYGEN DATA](#)

In addition, an abnormal value is identified by a visual check, and the data after visual QC is released.

#### Note

(1) In this cruise, there is extra data (fluorescence intensity, transmittance, distance to bottom) in additional to temperature, salinity, dissolved oxygen that has been opened to the public. Please contact us from "Contact Us" above if necessary.

#### Related Information



**MR05-01**  
 Ship Name: MIRAI  
 Period: 2005-02-28 - 2005-03-24  
 Chief Scientist: Makio Honda (JAMSTEC)  
 Project Name: [Station K2, Station KNOT]

[Enlarge Image](#)

#### Update History

2017-06-22	An observation data was registerd.
2014-07-25	An observation data was registerd.
2014-02-07	An observation data was registerd.
2013-03-27	An observation data was registerd.
2012-11-25	An observation data was registerd.

#### JAMSTEC

[Site Policy](#)  
[Privacy Policy](#)  
[Application for Data and Samples](#)  
[Data Policy](#)

**What's New**  
[Update History](#)  
[Feeds](#)

#### Lists

[Publication List](#)  
[Amount of Public Info.](#)

#### Data

[Map Search](#)  
[Data Tree](#)  
[Detailed Search](#)

#### Information of the Ships

[NATSUSHIMA](#)  
[KAIYO](#)  
[YOKOSUKA](#)  
[MIRAI](#)  
[KAIREI](#)  
[CHIKYU](#)  
[KAIMEI](#)  
[SHINSEI MARU](#)  
[HAKUHO MARU](#)

#### Information of the Submersibles

[KAIKO](#)  
[SHINKAI 2000](#)  
[SHINKAI 6500](#)  
[DEEP TOW](#)  
[HYPER-DOLPHIN](#)  
[URASHIMA](#)  
[YOKOSUKA DEEP TOW](#)  
[6K Camera DEEP TOW](#)  
[6K Sonar DEEP TOW](#)  
[KM-ROV](#)  
[POWER GRAB SAMPLER \(SHELL\)](#)  
[POWER GRAB SAMPLER \(CLOW\)](#)  
[BMS](#)

#### Go to a Cruise Information

Cruise ID:

#### Go to a Dive Information

Dive ID:

Copyright 2011 Japan Agency for Marine-Earth Science and Technology



**JAMSTEC**

国立研究開発法人  
海洋研究開発機構  
JAPAN AGENCY FOR MARINE-EARTH SCIENCE AND TECHNOLOGY

## MIRAI MR05-01 Conductivity-Temperature-Depth Profiler (CTD)

Last Modified: 2017-06-22

[ReadMe](#)   [Observation Data](#)   [Data Format](#)

Cruise ID: [MR05-01](#)

Conductivity-Temperature-Depth Profiler (CTD): Processed (DMO)-QCed

Data Policy: [JAMSTEC](#)

### CTD DMO

#### Format Description for the Corrected Data

Provided in the Exchange Format of CCHDO (CLIVAR and Carbon Hydrographic Data Office). Please see the following link for details of Exchange Format.

[CCHDO | CLIVAR & Carbon Hydrographic Data Office](#)

Data in following cruise is not expressed with Exchange Format. Please see the site of each cruise for format.

MR02-K05 Leg1

MR04-05

#### Format Description for the QCed Data

Each data file contains one line header (meta data) followed by data lines for each cast.

The number of data lines are recorded in the header.

Header part

No.	Column	Content	Format	Remarks
1	1	Header ID	a1	fixed as '#'
2	3 - 6	Data ID	a4	CTD
3	8 - 22	Cruise ID	a15	MYYY-(K)XX(_legx)
4	24 - 31	Cast name	a8	
5	33 - 40	Date	i8	YYYYMMDD (UTC)
6	42 - 45	Time	i4	hhmm (UTC)
7	47 - 55	Latitude	i2,a1,f5.2,a1	dd-mm.mmN(S)
8	57 - 66	Longitude	i3,a1,f5.2,a1	ddd-mm.mmE(W)
9	68 - 71	Number of data lines	i4	
10	72 - 73	Terminator	-	CR+LF

Data part

No.	Column	Content	Unit	Format	Remarks
1	1 - 11	Pressure	dbar	f11.3	
2	12 - 22	Temperature	deg-C	f11.4	ITS-90
3	23 - 33	Salinity	PSU	f11.4	PSS-78
4	34 - 44	Dissolved oxygen	umol/kg	f11.3	
5	45 - 55	Flag	-	i11	1 - 7 : space 8 : flag of pressure 9 : flag of temperature 10 : flag of salinity 11 : flag of dissolved oxygen * reference : <a href="#">Definition of Quality Control Flags</a>
6	56 - 57	Terminator	-	-	CR+LF

Each contents of the data part is stored in 11 bytes.

Missing value is presented by '-5', and error value is presented by '-9'.

#### Definition of Quality Control Flags

##### 1. Depth Flags

- 0 - accepted value
- 1 - error in recorded depth ( same or less than previous depth )
- 2 - density inversion

##### 2. Observed Level Flags

- N - missing value
- 0 - accepted value
- 1 - range outlier ( outside of broad range check )
- 2 - failed inversion check
- 3 - failed gradient check
- 4 - zero anomaly
- 5 - failed combined gradient and inversion checks
- 6 - failed range and inversion checks
- 7 - failed range and gradient checks
- 8 - failed range and zero anomaly checks
- 9 - failed range and combined gradient and inversion checks
- A - failed visual check

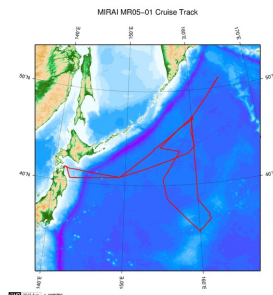
QCed data were added flag according to the NODC (National Oceanographic Data Center) quality control procedure, additionally visually checked. Please see the site of NODC of the following link for quality control procedure.

[QUALITY CONTROL AND PROCESSING OF HISTORICAL OCEANOGRAPHIC TEMPERATURE, SALINITY, AND OXYGEN DATA](#)

#### Sample Program

[ex\\_read2.f](#)

#### Related Information



[Enlarge Image](#)

#### MR05-01

Ship Name: MIRAI  
 Period: 2005-02-28 - 2005-03-24  
 Chief Scientist: Makio Honda (JAMSTEC)  
 Project Name: [Station K2, Station KNOT]

#### Update History

2017-06-22	An observation data was registerd.
2014-07-25	An observation data was registerd.
2014-02-07	An observation data was registerd.
2013-03-27	An observation data was registerd.
2012-11-25	An observation data was registerd.

#### JAMSTEC

[Site Policy](#)  
[Privacy Policy](#)  
[Application for Data and Samples](#)  
[Data Policy](#)  
**What's New**  
[Update History](#)  
[Feeds](#)

#### Lists

[Publication List](#)  
[Amount of Public Info.](#)  
**Data**  
[Map Search](#)  
[Data Tree](#)  
[Detailed Search](#)

#### Information of the Ships

[NATSUSHIMA](#)  
[KAIYO](#)  
[YOKOSUKA](#)  
[MIRAI](#)  
[KAIREI](#)  
[CHIKYU](#)  
[KAIMEI](#)  
[SHINSEI MARU](#)  
[HAKUHO MARU](#)

#### Information of the Submersibles

[KAIKO](#)  
[SHINKAI 2000](#)  
[SHINKAI 6500](#)  
[DEEP TOW](#)  
[HYPER-DOLPHIN](#)  
[URASHIMA](#)  
[YOKOSUKA DEEP TOW](#)  
[6K Camera DEEP TOW](#)  
[6K Sonar DEEP TOW](#)  
[KM-ROV](#)  
[POWER GRAB SAMPLER \(SHELL\)](#)  
[POWER GRAB SAMPLER \(CLOW\)](#)  
[BMS](#)

#### Go to a Cruise Information

Cruise ID:

#### Go to a Dive Information

Dive ID:

Copyright 2011 Japan Agency for Marine-Earth Science and Technology



**JAMSTEC** 国立研究開発法人  
 海洋研究開発機構  
 JAPAN AGENCY FOR MARINE-EARTH SCIENCE AND TECHNOLOGY

## MIRAI MR05-01 Conductivity-Temperature-Depth Profiler (CTD)

Last Modified: 2017-06-22

[ReadMe](#) [Observation Data](#) [Data Format](#)

Cruise ID: **MR05-01**

Conductivity-Temperature-Depth Profiler (CTD): Processed (DMO)-QCed

Data Policy: **JAMSTEC**

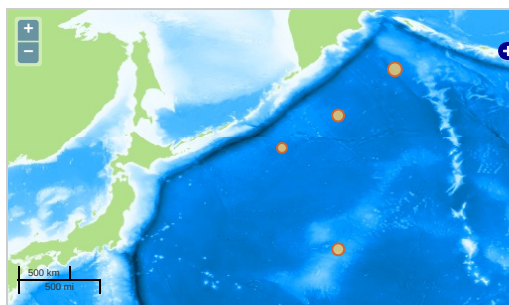
Observation Items: Pressure, Temperature, Salinity, Dissolved oxygen

Science Keywords:

OCEANS > OCEAN CHEMISTRY > OXYGEN  
OCEANS > OCEAN > WATER  
TEMPERATURE TEMPERATURE  
OCEANS > SALINITY/DENSITY > SALINITY

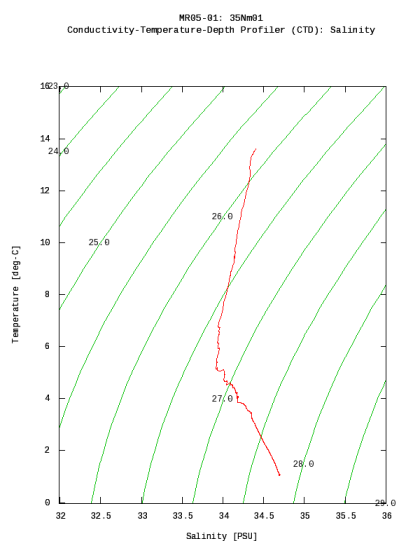
### Observation Map

1. Clicking the icon displays a balloon with observation information.
2. Then click the observation name, figures will be displayed.



### Figures

35Nm01



Only values evaluated as "good : all flags are 0" are plotted in profiles.  
Please see Format Page for the definition of quality flags.

### Data List

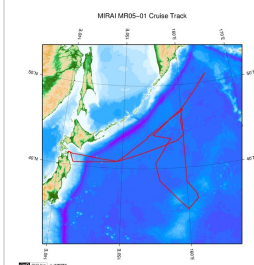
[Add to Basket](#)

<input type="checkbox"/> File names
<input type="checkbox"/> 35Nm01.dat
<input type="checkbox"/> 35Nm02.dat
<input type="checkbox"/> 35Nm03.dat
<input type="checkbox"/> K01m02.dat
<input type="checkbox"/> K01m04.dat
<input type="checkbox"/> K01m05.dat
<input type="checkbox"/> K01m06.dat
<input type="checkbox"/> K02m01.dat
<input type="checkbox"/> K02m04.dat
<input type="checkbox"/> K02m08.dat
<input type="checkbox"/> KNOTm01.dat
<input type="checkbox"/> KNOTm02.dat
<input type="checkbox"/> ex_read2.f (Sample Program)

- Observation List  
The list of observation is shown as follows.

Observation	Time and Date	Lat. [°]	Lon. [°]
35Nm01	2005-03-10 20:52	34.9966	159.9993
35Nm02	2005-03-11 02:35	35.0001	159.9958
35Nm03	2005-03-11 17:52	35.0000	160.0001
K01m02	2005-03-06 06:20	50.9793	165.0285
K01m04	2005-03-06 17:54	51.0018	164.9968
K01m05	2005-03-06 18:58	51.0016	164.9896
K01m06	2005-03-07 00:48	50.9985	164.9941
K02m01	2005-03-03 04:20	46.8746	159.9890
K02m04	2005-03-04 06:48	47.0223	160.0068
K02m08	2005-03-04 18:28	46.9643	160.1536
KNOTm01	2005-03-14 16:56	43.9986	155.0035
KNOTm02	2005-03-14 18:29	44.0136	155.0038

#### Related Information



[Enlarge Image](#)

#### MR05-01

Ship Name: MIRAI  
Period: 2005-02-28 - 2005-03-24  
Chief Scientist: Makio Honda (JAMSTEC)  
Project Name: [Station K2, Station KNOT]

#### Update History

2017-06-22	An observation data was registered.
2014-07-25	An observation data was registered.
2014-02-07	An observation data was registered.
2013-03-27	An observation data was registered.
2012-11-25	An observation data was registered.

#### JAMSTEC

[Site Policy](#)  
[Privacy Policy](#)  
[Application for Data and Samples](#)  
[Data Policy](#)  
[What's New](#)  
[Update History](#)  
[Feeds](#)

[Lists](#)  
[Publication List](#)  
[Amount of Public Info.](#)  
[Data](#)  
[Map Search](#)  
[Data Tree](#)  
[Detailed Search](#)

#### Information of the Ships

[NATSUSHIMA](#)  
[KAIYO](#)  
[YOKOSUKA](#)  
[MIRAI](#)  
[KAIREI](#)  
[CHIKYU](#)  
[KAIMEI](#)  
[SHINSEI MARU](#)  
[HAKUHO MARU](#)

#### Information of the Submersibles

[KAIKO](#)  
[SHINKAI 2000](#)  
[SHINKAI 6500](#)  
[DEEP TOW](#)  
[HYPER-DOLPHIN](#)  
[URASHIMA](#)  
[YOKOSUKA DEEP TOW](#)  
[6K Camera DEEP TOW](#)  
[6K Sonar DEEP TOW](#)  
[KM-ROV](#)  
[POWER GRAB SAMPLER \(SHELL\)](#)  
[POWER GRAB SAMPLER \(CLOW\)](#)  
[BMS](#)

#### Go to a Cruise Information

Cruise ID:

#### Go to a Dive Information

Dive ID:

