

## YOKOSUKA YK09-13 Leg1 Total Magnetic Intensity (TMI)

Last Modified: 2019-06-26

[ReadMe](#) [Observation Data](#) [Data Format](#)

Cruise ID: [YK09-13 Leg1](#)

Total Magnetic Intensity (TMI): Processed (DMO)-Corrected

Data Policy: [JAMSTEC](#)

Observation Items: Total magnetic field intensity

Science Keywords:

OCEANS > MARINE GEOPHYSICS > MARINE  
MAGNETICS  
SOLID EARTH > GEOMAGNETISM

Cruise Report

[http://www.godac.jamstec.go.jp/catalog/data/doc\\_catalog/media/YK09-13\\_leg1\\_all.pdf](http://www.godac.jamstec.go.jp/catalog/data/doc_catalog/media/YK09-13_leg1_all.pdf)

### For Using Data

#### Principal Investigator

Data Management Office

#### Use Constraints

See [Terms and Conditions](#) about constrain of use.

#### Data Citation

See [Terms and Conditions](#) about data citation.

### Period (UTC)

2009-10-22 06:02 ~ 2009-10-27 01:17

2009-10-12 10:37 ~ 2009-10-18 01:18

### Instrument

Instrument:

Proton magnetometer (YK07-01 - )



### Overview

The proton precession magnetometer measures the total magnetic field intensity as the frequency of electric current which is generated by the proton precession. In order to avoid the ship's magnetization, the instrument is towed by the vessel about 200 - 300m. As a quality control, data of low reliability was removed (see section 5. for quality control criteria). Synthetic geomagnetic field values were calculated from IGRF models.

### Measurement System

Manufacturer : Kawasaki Geological Engineering Co. Ltd. and Tierra Technica Ltd.

Type : PM-217

Measurement range : 30,000 -70,000 nT

Resolution : 0.01 nT

Accuracy : less than 0.1 nT

Location : No.1 Study Room

### Data processing

The following corrections and calculations were performed.

#### (1) International Geomagnetic Reference Field (IGRF)

Synthetic geomagnetic field values are calculated from IGRF 11th generation models by using navigation data ; latitude, longitude and date.

Reference: IAGA Division V-MOD Geomagnetic Field Modeling <http://www.ngdc.noaa.gov/IAGA/vmod/igrf.html>

#### (2) Calculation of the geomagnetic field anomaly

$A_n = F - F_{igrf}$

$A_n$ : Total geomagnetic field intensity anomaly

$F$ : Observed total geomagnetic field intensity

$F_{igrf}$ : Synthetic total geomagnetic field intensity from IGRF

#### (3) Output of the data

Time (UTC)

Latitude (degree)

Longitude (degree)

Observed total magnetic field intensity (nT)

Total geomagnetic field intensity anomaly (nT)

### Quality control of data

Following criteria were used for removal of data of low reliability:

- Time error (inversion of time, continuation of same timestamps)
- Ground speed of the ship below 1knot or exceeding 20knot
- Total geomagnetic field intensity anomaly exceeding  $\pm 4000$ nT
- Spatial gradient of the total geomagnetic field intensity anomaly exceeding  $\pm 300$ nT/km

### Note

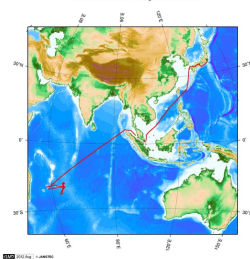
- (1) File naming rule: Cruise ID\_corr.tmag
- (2) Sampling rate: 20 seconds(It depends on geomagnetic field intensity and inclination )
- (3) Geodetic system: WGS84
- (4) If you would like the raw data set, please contact us from "Contact Us" above.

## Related Information

[Cruise Data](#)

[Dive Data](#)

YOKOSUKA YK09-13 Leg1 Cruise Track



[Enlarge Image](#)

### YK09-13 Leg1

Ship Name: YOKOSUKA

Period: 2009-09-17 - 2009-10-29

Chief Scientist: Kensaku Tamaki (The University of Tokyo)

Proposal Diving program of the Rodriguez Segment at the Central Indian Ridge

Title:

## Update History

|            |                                     |
|------------|-------------------------------------|
| 2019-06-26 | An observation data was registered. |
| 2018-05-09 | An observation data was registered. |
| 2012-09-28 | An observation data was registered. |

### JAMSTEC

[Site Policy](#)  
[Privacy Policy](#)  
[Application for Data and Samples](#)  
[Data Policy](#)  
  
[What's New](#)  
[Update History](#)  
[Feeds](#)

### Lists

[Publication List](#)  
[Amount of Public Info.](#)

### Data

[Map Search](#)  
[Data Tree](#)  
[Detailed Search](#)

### Information of the Ships

[NATSUSHIMA](#)  
[KAIYO](#)  
[YOKOSUKA](#)  
[MIRAI](#)  
[KAIREI](#)  
[CHIKYU](#)  
[KAIMEI](#)  
[SHINSEI MARU](#)  
[HAKUHO MARU](#)

### Information of the Submersibles

[KAIKO](#)  
[SHINKAI 2000](#)  
[SHINKAI 6500](#)  
[DEEP TOW](#)  
[HYPER-DOLPHIN](#)  
[URASHIMA](#)  
[YOKOSUKA DEEP TOW](#)  
[6K Camera DEEP TOW](#)  
[6K Sonar DEEP TOW](#)  
[KM-ROV](#)  
[POWER GRAB](#)  
[SAMPLER \(SHELL\)](#)  
[POWER GRAB](#)  
[SAMPLER \(CLOW\)](#)  
[BMS](#)

### Go to a Cruise Information

Cruise ID:

### Go to a Dive Information

Dive ID:

Copyright 2011 Japan Agency for Marine-Earth Science and Technology



**JAMSTEC**

国立研究開発法人  
海洋研究開発機構  
JAPAN AGENCY FOR MARINE-EARTH SCIENCE AND TECHNOLOGY

## YOKOSUKA YK09-13 Leg1 Total Magnetic Intensity (TMI)

Last Modified: 2019-06-26

[ReadMe](#) [Observation Data](#) [Data Format](#)

Cruise ID: [YK09-13 Leg1](#)

Total Magnetic Intensity (TMI): Processed (DMO)-Corrected

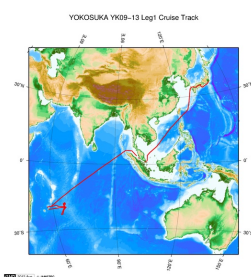
Data Policy: [JAMSTEC](#)

### TMI Corrected

| No. | Column | Content                                    | Format   | Unit   | Remarks   |
|-----|--------|--|----------|--------|---|
| 1   | 1 - 8  | Date                                       | i4,i2,i2 |        | YYYYMMDD (UTC)  |
| 2   | 10 -15 | Time                                       | i2,i2,i2 |        | hhmmss (UTC)  |
| 3   | 17 -25 | Latitude                                   | f9.5     | degree | No sign for the northern hemisphere.<br>Negative for the southern hemisphere. |
| 4   | 27 -36 | Longitude                                  | f10.5    | degree | No sign for eastern hemisphere.<br>Negative for the western hemisphere.       |
| 5   | 38 -45 | Observed total geomagnetic field intensity | f8.1     | nT     |   |
| 6   | 46 -53 | Total geomagnetic field intensity anomaly  | f7.1     | nT     |   |

### Related Information

[Cruise Data](#) [Dive Data](#)



[Enlarge Image](#)

#### YK09-13 Leg1

Ship Name: YOKOSUKA  
Period: 2009-09-17 - 2009-10-29  
Chief Scientist: Kensaku Tamaki (The University of Tokyo)  
Proposal: Diving program of the Rodriguez Segment at the Central Indian Ridge  
Title:

### Update History

|            |                                     |
|------------|-------------------------------------|
| 2019-06-26 | An observation data was registered. |
| 2018-05-09 | An observation data was registered. |
| 2012-09-28 | An observation data was registered. |

#### JAMSTEC

[Site Policy](#)  
[Privacy Policy](#)  
[Application for Data and Samples](#)  
[Data Policy](#)

#### What's New

[Update History](#)  
[Feeds](#)

#### Lists

[Publication List](#)  
[Amount of Public Info.](#)

#### Data

[Map Search](#)  
[Data Tree](#)  
[Detailed Search](#)

#### Information of the Ships

[NATSUSHIMA](#)  
[KAIYO](#)  
[YOKOSUKA](#)  
[MIRAI](#)  
[KAIREI](#)  
[CHIKYU](#)  
[KAIMEI](#)  
[SHINSEI MARU](#)  
[HAKUHO MARU](#)

#### Information of the Submersibles

[KAIKO](#)  
[SHINKAI 2000](#)  
[SHINKAI 6500](#)  
[DEEP TOW](#)  
[HYPER-DOLPHIN](#)  
[URASHIMA](#)  
[YOKOSUKA DEEP TOW](#)  
[6K Camera DEEP TOW](#)  
[6K Sonar DEEP TOW](#)  
[KM-ROV](#)  
[POWER GRAB](#)  
[SAMPLER \(SHELL\)](#)  
[POWER GRAB](#)  
[SAMPLER \(CLOW\)](#)  
[BMS](#)

#### Go to a Cruise Information

Cruise ID:

#### Go to a Dive Information

Dive ID:

## YOKOSUKA YK09-13 Leg1 Total Magnetic Intensity (TMI)

Last Modified: 2019-06-26

[ReadMe](#) [Observation Data](#) [Data Format](#)

Cruise ID: [YK09-13 Leg1](#)

Total Magnetic Intensity (TMI): Processed (DMO)-Corrected

Data Policy: [JAMSTEC](#)

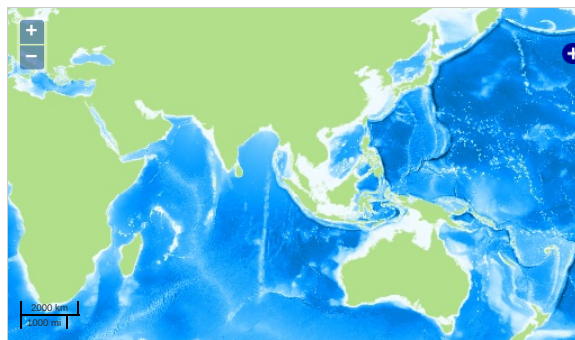
Observation Items: Total magnetic field intensity

Science Keywords:

OCEANS > MARINE GEOPHYSICS > MARINE MAGNETICS

SOLID EARTH > GEOMAGNETISM

### Observation Map



— ... Observation Line — ... Navigation ● ... Observation, Dive Point, Hole

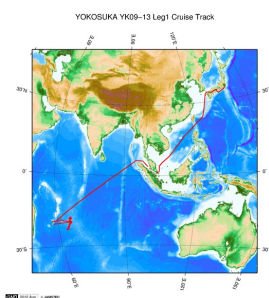
### Data List

File names

☐ YK09-13\_leg1\_tmag.zip

### Related Information

☒ Cruise Data ☐ Dive Data



[Enlarge Image](#)

#### YK09-13 Leg1

Ship Name: YOKOSUKA

Period: 2009-09-17 - 2009-10-29

Chief Scientist: Kensaku Tamaki (The University of Tokyo)

Proposal: Diving program of the Rodriguez Segment at the Central Indian Ridge

Title:

### Update History

|            |                                     |
|------------|-------------------------------------|
| 2019-06-26 | An observation data was registered. |
| 2018-05-09 | An observation data was registered. |
| 2012-09-28 | An observation data was registered. |

#### JAMSTEC

[Site Policy](#)  
[Privacy Policy](#)  
[Application for Data and Samples](#)  
[Data Policy](#)

[What's New](#)  
[Update History](#)  
[Feeds](#)

#### Lists

[Publication List](#)  
[Amount of Public Info.](#)

#### Data

[Map Search](#)  
[Data Tree](#)  
[Detailed Search](#)

#### Information of the Ships

NATSUSHIMA  
KAIYO  
YOKOSUKA  
MIRAI  
KAIREI  
CHIKYU  
KAIMEI  
SHINSEI MARU  
HAKUHO MARU

#### Information of the Submersibles

KAIKO  
SHINKAI 2000  
SHINKAI 6500  
DEEP TOW  
HYPER-DOLPHIN  
URASHIMA  
YOKOSUKA DEEP TOW  
6K Camera DEEP TOW  
6K Sonar DEEP TOW  
KM-ROV  
POWER GRAB SAMPLER (SHELL)  
POWER GRAB SAMPLER (CLOW)  
BMS

#### Go to a Cruise Information

Cruise ID:

#### Go to a Dive Information

Dive ID: