

## KAIMEI KM19-05C Precipitable water vapor (GNSS water vapor)

Last Modified: 2020-02-07

[ReadMe](#) [Observation Data](#) [Data Format](#)

Cruise ID: [KM19-05C](#)

Precipitable water vapor (GNSS water vapor): Processed (DMO)-Corrected

Data Policy: [JAMSTEC](#)

Observation Items: Precipitable water vapor (GNSS water vapor)

Science Keywords:

ATMOSPHERE > ATMOSPHERIC WATER VAPOR > WATER VAPOR

Cruise Report

[http://www.godac.jamstec.go.jp/catalog/data/doc\\_catalog/media/KM19-05C\\_all.pdf](http://www.godac.jamstec.go.jp/catalog/data/doc_catalog/media/KM19-05C_all.pdf)

### [For Using Data](#)

Principal Investigator

Data Management Office

Use Constraints

See [Terms and Conditions](#) about constrain of use.

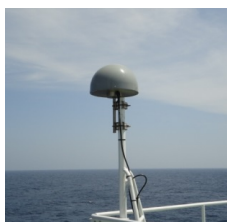
Data Citation

See [Terms and Conditions](#) about data citation.

### Instrument

Instrument:

GPS water vapor observation system



### Overview

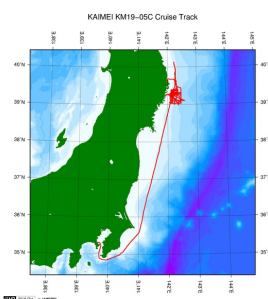
The data provided here is precipitable water vapor (column water vapor) estimated from GNSS observation on R/V KAIMEI. See [here](#) for detailed processing methods.

### Measurement System

GNSS receiver [model/manufacture]:	NetR9 Ti-1/Trimble
GNSS antenna [model/manufacture]:	GNSS-Ti Choke Ring Antenna with radome/Trimble
Antenna location:	compass deck (18 meters high from sea surface)
Received satellite:	GPS, GLONASS, QZSS
Sampling interval:	5 sec
Elevation mask:	5 degrees (However, set to 10 degrees in the data processing provided here)

### Related Information

☒ Cruise Data ☐ Dive Data



[Enlarge Image](#)

#### [KM19-05C](#)

Ship Name: KAIMEI  
Period: 2019-07-14 - 2019-08-07  
Chief Scientist: Shinji Tsuchida (JAMSTEC)  
Project Name: [Tohoku Ecosystem-Associated Marine Sciences (TEAMS)]

### Update History

2020-02-07 An observation data was registerd.

JAMSTEC  
[Site Policy](#)  
[Privacy Policy](#)  
[Application for Data and Samples](#)  
[Data Policy](#)  
  
[What's New](#)  
[Update History](#)  
[Feeds](#)

Lists  
[Publication List](#)  
[Amount of Public Info.](#)  
  
Data  
[Map Search](#)  
[Data Tree](#)  
[Detailed Search](#)

Information of the Ships  
NATSUSHIMA  
KAIYO  
YOKOSUKA  
MIRAI  
KAIREI  
CHIKYU  
KAIMEI  
SHINSEI MARU  
HAKUHO MARU

Information of the Submersibles  
KAIKO  
SHINKAI 2000  
SHINKAI 6500  
DEEP TOW  
HYPER-DOLPHIN  
URASHIMA  
YOKOSUKA DEEP TOW  
6K Camera DEEP TOW  
6K Sonar DEEP TOW  
KM-ROV

Go to a Cruise Information

Cruise ID:

Go to a Dive Information

Dive ID:

POWER GRAB SAMPLER  
(SHELL)  
POWER GRAB SAMPLER  
(CLOW)  
BMS

Copyright 2011 Japan Agency for Marine-Earth Science and  
Technology



**JAMSTEC** 国立研究開発法人  
海洋研究開発機構  
JAPAN AGENCY FOR MARINE-EARTH SCIENCE AND TECHNOLOGY

## KAIMEI KM19-05C Precipitable water vapor (GNSS water vapor)

Last Modified: 2020-02-07

[ReadMe](#) [Observation Data](#) [Data Format](#)

Cruise ID: **KM19-05C**

Precipitable water vapor (GNSS water vapor) Processed (DMO)-Corrected

Data Policy: [JAMSTEC](#)

### Precipitable water vapor (GNSS water vapor)

Single space separated.

No.	Column	Content	Unit	Format (nodata or baddata)	Remarks
1	1-8	Date [YYYYMMDD]		i8	Every 10 minutes* * Time stamp is set at the end of average
2	10-13	Time [hhmm]		i4	Every 10 minutes*
3	15-24	Longitude [-180 to 180]	degree	f10.5 (999.99999)	Location at time stamp +:East longitude -:West longitude
4	26-34	Latitude [-90 to 90]	degree	f9.5 (999.99999)	Location at time stamp +:North latitude -:South latitude
5	36-41	Precipitable water vapor (column water vapor)	mm	f6.2 (999.99)	10-minute mean*

Data Example

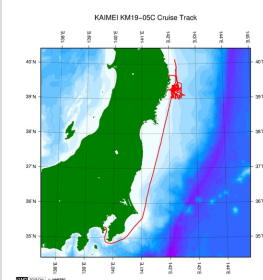
```

YYYYMMDD hhmm Lon Lat PWV
20170422 0030 130.92555 33.93327 15.15
20170422 0040 130.93252 33.94054 15.20
20170422 0050 130.95647 33.95871 15.28
20170422 0100 130.99144 33.97308 15.47

```

### Related Information

[Cruise Data](#) [Dive Data](#)



[Enlarge Image](#)

#### KM19-05C

Ship Name: KAIMEI  
Period: 2019-07-14 - 2019-08-07  
Chief Scientist: Shinji Tsuchida (JAMSTEC)  
Project Name: [Tohoku Ecosystem-Associated Marine Sciences (TEAMS)]

### Update History

2020-02-07 An observation data was registered.

JAMSTEC  
[Site Policy](#)  
[Privacy Policy](#)  
[Application for Data and Samples](#)  
[Data Policy](#)  
  
[What's New](#)  
[Update History](#)  
[Feeds](#)

[Lists](#)  
[Publication List](#)  
[Amount of Public Info.](#)  
  
[Data](#)  
[Map Search](#)  
[Data Tree](#)  
[Detailed Search](#)

[Information of the Ships](#)  
NATSUSHIMA  
KAIYO  
YOKOSUKA  
MIRAI  
KAIREI  
CHIKYU  
KAIMEI  
SHINSEI MARU  
HAKUHO MARU

[Information of the Submersibles](#)  
KAIKO  
SHINKAI 2000  
SHINKAI 6500  
DEEP TOW  
HYPER-DOLPHIN  
URASHIMA  
YOKOSUKA DEEP TOW  
6K Camera DEEP TOW  
6K Sonar DEEP TOW  
KM-ROV  
POWER GRAB  
SAMPLER (SHELL)  
POWER GRAB  
SAMPLER (CLOW)  
BMS

#### Go to a Cruise Information

Cruise ID:

#### Go to a Dive Information

Dive ID:

## KAIMEI KM19-05C Precipitable water vapor (GNSS water vapor)

Last Modified: 2020-02-07

[ReadMe](#) [Observation Data](#) [Data Format](#)

Cruise ID: [KM19-05C](#)

Precipitable water vapor (GNSS water vapor): Processed (DMO)-Corrected

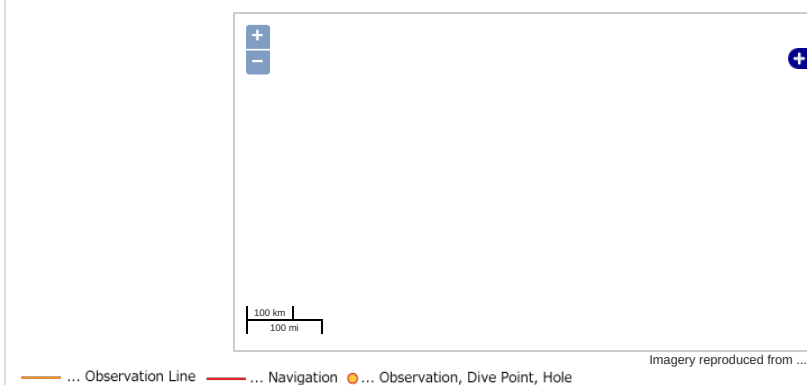
Data Policy: [JAMSTEC](#)

Observation Items: Precipitable water vapor (GNSS water vapor)

Science Keywords:

ATMOSPHERE > ATMOSPHERIC WATER VAPOR > WATER VAPOR

### Observation Map



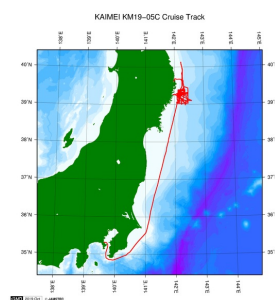
### Data List

File names

☐ KM19-05C\_gnssppww.dat

### Related Information

☒ Cruise Data ☐ Dive Data



[Enlarge Image](#)

#### KM19-05C

Ship Name: KAIMEI

Period: 2019-07-14 - 2019-08-07

Chief Scientist: Shinji Tsuchida (JAMSTEC)

Project Name: [Tohoku Ecosystem-Associated Marine Sciences (TEAMS)]

### Update History

2020-02-07 An observation data was registered.

JAMSTEC  
Site Policy  
Privacy Policy  
Application for Data and Samples  
Data Policy  
What's New  
Update History  
Feeds

Lists  
Publication List  
Amount of Public Info.  
Data  
Map Search  
Data Tree  
Detailed Search

Information of the Ships  
NATSUSHIMA  
KAIYO  
YOKOSUKA  
MIRAI  
KAIREI  
CHIKYU  
KAIMEI  
SHINSEI MARU  
HAKUHO MARU

Information of the Submersibles  
KAIKO  
SHINKAI 2000  
SHINKAI 6500  
DEEP TOW  
HYPER-DOLPHIN  
URASHIMA  
YOKOSUKA DEEP TOW  
6K Camera DEEP TOW  
6K Sonar DEEP TOW  
KM-ROV  
POWER GRAB SAMPLER (SHELL)  
POWER GRAB SAMPLER (CLOW)  
BMS

#### Go to a Cruise Information

Cruise ID:

#### Go to a Dive Information

Dive ID: