

MIRAI MR00-K04 Radiosonde

Last Modified: 2014-07-11

ReadMe Observation Data Data Format

Cruise ID: **MR00-K04**

Radiosonde: Processed (DMO)-Corrected

Data Policy: **JAMSTEC**

Observation Items: Atmospheric pressure, Air temperature, Dew point temperature, Relative humidity, Wind speed (zonal, meridional), Height

Science Keywords:

ATMOSPHERE > ATMOSPHERIC WATER VAPOR > DEW POINT TEMPERATURE
ATMOSPHERE > ATMOSPHERIC WATER VAPOR > HUMIDITY
ATMOSPHERE > ATMOSPHERIC TEMPERATURE > TEMPERATURE PROFILES
ATMOSPHERE > ATMOSPHERIC WINDS > UPPER LEVEL WINDS
ATMOSPHERE > ATMOSPHERIC WINDS > WIND PROFILES

Cruise Report

http://www.godac.jamstec.go.jp/catalog/data/doc_catalog/media/MR00-K04_all.pdf

For Using Data

Principal Investigator

Data Management Office

Use Constraints

See [Terms and Conditions](#) about constrain of use.

Data Citation

See [Terms and Conditions](#) about data citation.

Instrument

Instrument:

Radiosonde (MR11-03 - MR15-E01 Leg3)



Instrument:

Radiosonde (MR04-03 Leg1 - MR11-02)



Instrument:

Radiosonde (- MR04-02)



Overview

Correction method

· Correction of ship body warming

Temperature and dew point temperature data near the surface (4.5 hPa from ship deck) were corrected by linear extrapolation using upper layer data, since these data were affected by ship body warming (cooling) at daytime (nighttime). Details for data processing and correction can be found in [Yoneyama et al. \(2002\)](#).

Note

Information about each radiosonde data are listed in the following table. It contains corrected sounding data, launch time, position, sensor information and calibration results for atmospheric pressure, air temperature and relative humidity. Calibration is conducted for every sensor prior to launch. Therefore, even raw data take in this calibration result. If the calibration result shows the positive value, it means that the calibrator showed the higher value than that of the sonde sensor. Filename of corrected data shows a sounding time (YYMMDDHH.***, where YY=year, MM=month, DD=day, and HH=hour) in UTC.

Data file	Launch time (UTC)		Launch station		Sensor information		Calibration result			Note
	Date	Time	Latitude	Longitude	Serial No.	Age	Atmospheric pressure [hPa]	Air temperature [deg-C]	Relative humidity [%]	
00061900.dat	2000/06/18	23:31	9.06N	140.00E	006211503	132	0.8	0.5	0.0	
00061903.dat	2000/06/19	02:37	8.26N	140.00E	006200103	133	0.8	0.4	5.0	
00061906.dat	2000/06/19	05:35	7.48N	140.00E	006211509	133	0.7	0.3	2.0	
00061909.dat	2000/06/19	08:34	6.67N	139.99E	006211304	133	0.5	-0.4	3.0	
00061912.dat	2000/06/19	11:58	5.73N	139.96E	006200213	133	0.7	0.1	1.0	
00061915.dat	2000/06/19	14:30	5.14N	140.00E	006200114	133	1.1	0.1	5.0	
00061918.dat	2000/06/19	17:30	5.29N	140.01E	006200109	133	0.7	0.1	0.0	
00061921.dat	2000/06/19	20:33	5.96N	139.99E	006211311	133	0.6	0.8	5.0	
00062000.dat	2000/06/19	23:31	6.56N	140.00E	006111014	134	0.4	0.1	0.0	
00062003.dat	2000/06/20	02:23	6.96N	140.05E	006211508	134	0.6	0.1	4.0	
00062006.dat	2000/06/20	05:23	6.95N	140.04E	006211303	134	0.6	0.4	2.0	
00062009.dat	2000/06/20	08:25	6.99N	140.04E	006211314	134	0.7	0.1	2.0	
00062012.dat	2000/06/20	11:29	7.00N	139.99E	006211514	134	0.0	0.2	2.0	
00062015.dat	2000/06/20	14:26	7.02N	140.03E	006403811	132	0.5	0.4	7.0	
00062018.dat	2000/06/20	17:23	7.00N	140.02E	006403812	132	0.8	0.2	6.0	
00062021.dat	2000/06/20	20:24	7.03N	140.03E	006403813	132	0.4	0.1	6.0	
00062100.dat	2000/06/20	23:29	7.01N	140.03E	006403700	132	0.4	0.5	3.0	
00062103.dat	2000/06/21	02:29	7.03N	140.07E	006111009	136	0.3	0.3	3.0	
00062106.dat	2000/06/21	05:28	7.00N	140.01E	006403702	133	0.4	0.4	6.0	
00062109.dat	2000/06/21	08:28	6.99N	140.04E	006403703	133	0.6	0.1	1.0	
00062112.dat	2000/06/21	11:29	7.01N	140.04E	006403705	133	1.0	0.4	1.0	
00062115.dat	2000/06/21	14:29	7.03N	140.05E	006403706	133	0.6	0.4	1.0	
00062118.dat	2000/06/21	17:28	7.03N	140.04E	006403707	133	0.5	0.5	3.0	

00062121.dat	2000/06/21	21:05	7.01N	140.01E	006403711	133	0.6	0.0	-4.0	
00062200.dat	2000/06/21	23:28	6.99N	140.06E	006403715	133	0.9	0.3	4.0	
00062203.dat	2000/06/22	02:28	7.01N	140.07E	006403710	134	0.8	0.3	3.0	
00062206.dat	2000/06/22	05:28	7.03N	140.01E	006403708	134	0.8	0.4	4.0	
00062209.dat	2000/06/22	08:29	7.02N	140.05E	006403600	134	0.3	0.2	3.0	
00062215.dat	2000/06/22	14:28	7.03N	140.03E	006403602	134	0.4	0.2	2.0	
00062218.dat	2000/06/22	17:29	7.02N	140.04E	006403815	134	-0.2	0.2	3.0	
00062221.dat	2000/06/22	20:29	7.06N	140.05E	006403800	134	0.7	0.5	4.0	
00062300.dat	2000/06/22	23:28	7.01N	140.01E	006403806	134	0.6	0.3	1.0	
00062303.dat	2000/06/23	02:29	7.02N	140.02E	006403807	135	0.6	0.4	3.0	
00062306.dat	2000/06/23	05:29	7.03N	139.99E	006403814	135	0.7	0.6	3.0	
00062309.dat	2000/06/23	08:28	7.03N	140.03E	006403808	135	0.1	0.2	2.0	
00062312.dat	2000/06/23	11:29	7.00N	140.01E	006403810	135	0.3	0.3	2.0	
00062315.dat	2000/06/23	14:28	6.95N	140.04E	006403809	135	0.4	0.1	3.0	
00062318.dat	2000/06/23	17:28	6.96N	140.02E	006403912	135	0.4	0.3	3.0	
00062321.dat	2000/06/23	20:28	7.04N	140.04E	006403911	135	0.7	0.2	3.0	
00062400.dat	2000/06/23	23:28	7.01N	140.02E	006403915	135	0.5	0.1	3.0	
00062403.dat	2000/06/24	02:29	7.03N	140.05E	006403913	136	0.5	0.2	4.0	
00062406.dat	2000/06/24	05:28	7.01N	140.04E	006404202	136	0.7	0.3	3.0	
00062409.dat	2000/06/24	08:29	7.02N	140.03E	006403914	136	0.5	0.1	2.0	
00062412.dat	2000/06/24	11:28	7.00N	140.01E	006403907	136	0.4	0.2	0.0	
00062415.dat	2000/06/24	14:29	7.00N	140.04E	006404200	136	0.6	0.1	3.0	
00062418.dat	2000/06/24	17:28	6.97N	140.07E	006404201	136	0.1	0.2	2.0	
00062421.dat	2000/06/24	20:29	6.98N	140.02E	006403910	136	0.4	0.4	3.0	
00062500.dat	2000/06/24	23:28	7.01N	140.00E	006403909	136	0.8	0.1	2.0	
00062503.dat	2000/06/25	02:29	7.02N	140.06E	006403908	137	0.7	0.7	3.0	
00062506.dat	2000/06/25	05:28	7.03N	139.97E	006200113	139	1.3	0.2	3.0	
00062509.dat	2000/06/25	08:28	7.02N	140.03E	006211502	139	0.7	0.0	1.0	
00062512.dat	2000/06/25	11:28	7.00N	140.01E	006200212	139	0.6	0.0	1.0	
00062518.dat	2000/06/25	17:28	6.99N	140.05E	006200107	139	2.9	0.4	3.0	
00062521.dat	2000/06/25	20:28	6.96N	140.04E	006501104	136	0.6	0.3	3.0	
00062600.dat	2000/06/25	23:28	6.99N	140.01E	006501105	136	0.7	0.2	5.0	
00062603.dat	2000/06/26	02:28	7.00N	140.14E	006501103	137	0.5	0.1	3.0	
00062606.dat	2000/06/26	05:28	7.01N	140.00E	006501106	137	0.6	0.2	4.0	
00062609.dat	2000/06/26	08:28	6.99N	140.03E	006501107	137	1.0	0.3	0.0	
00062612.dat	2000/06/26	11:29	6.98N	140.01E	006501108	137	0.8	0.3	1.0	
00062615.dat	2000/06/26	14:28	6.95N	140.01E	006501102	137	0.5	0.3	2.0	
00062618.dat	2000/06/26	17:28	6.91N	140.02E	006501101	137	0.8	0.3	1.0	
00062621.dat	2000/06/26	20:28	6.98N	139.95E	006501109	137	0.8	0.2	1.0	
00062700.dat	2000/06/26	23:29	7.01N	140.01E	006501100	137	0.4	-1.8	1.0	
00062703.dat	2000/06/27	02:39	6.91N	140.06E	006501005	138	1.0	-1.7	4.0	
00062706.dat	2000/06/27	05:28	7.00N	140.02E	006501006	138	0.9	0.3	6.0	
00062709.dat	2000/06/27	08:28	6.98N	140.02E	006501004	138	0.4	0.0	0.0	
00062712.dat	2000/06/27	11:39	6.99N	140.04E	006501003	138	0.6	0.3	-5.0	
00062715.dat	2000/06/27	14:38	7.00N	140.05E	006501002	138	0.1	0.5	2.0	
00062718.dat	2000/06/27	17:28	6.97N	140.10E	006501001	138	0.8	0.3	4.0	
00062721.dat	2000/06/27	20:28	6.99N	140.01E	006501000	138	1.0	-0.2	4.0	
00062800.dat	2000/06/27	23:38	6.99N	140.04E	006501112	138	0.1	0.1	1.0	
00062803.dat	2000/06/28	02:28	7.02N	140.10E	006501111	139	0.7	0.0	3.0	
00062806.dat	2000/06/28	05:30	6.96N	140.09E	006501110	139	0.5	0.0	5.0	
00062809.dat	2000/06/28	08:28	6.98N	140.02E	006501113	139	0.9	-0.3	3.0	
00062812.dat	2000/06/28	11:28	6.97N	140.01E	006501115	139	0.7	-0.1	3.0	
00062815.dat	2000/06/28	14:28	7.00N	140.05E	006501114	139	0.9	0.0	0.0	
00062818.dat	2000/06/28	17:28	6.98N	140.02E	006409911	140	0.8	0.2	3.0	
00062821.dat	2000/06/28	20:28	6.94N	140.04E	006409910	140	0.7	0.0	5.0	
00062900.dat	2000/06/28	23:28	6.99N	140.00E	006409909	140	0.2	0.2	1.0	
00062903.dat	2000/06/29	02:38	6.99N	140.09E	006302412	142	0.4	0.1	3.0	
00062906.dat	2000/06/29	05:28	6.97N	140.14E	006302411	142	1.0	-0.4	4.0	
00062909.dat	2000/06/29	08:28	6.97N	140.01E	006302410	142	0.3	0.1	1.0	
00062912.dat	2000/06/29	11:30	6.95N	139.98E	006302409	142	0.0	-0.2	1.0	
00062915.dat	2000/06/29	14:29	7.02N	140.03E	006302408	142	0.3	0.5	-2.0	
00062918.dat	2000/06/29	17:28	7.01N	140.02E	006302407	142	0.4	0.1	3.0	
00062921.dat	2000/06/29	20:29	6.94N	140.01E	006302406	142	0.6	0.1	4.0	
00063000.dat	2000/06/29	23:29	6.92N	140.00E	006302405	142	0.6	0.3	3.0	
00063003.dat	2000/06/30	02:29	6.87N	140.07E	006302404	143	-0.1	-0.1	4.0	
00063006.dat	2000/06/30	05:29	6.98N	140.02E	006302403	143	0.7	-0.3	7.0	
00063009.dat	2000/06/30	08:28	6.96N	140.03E	006302402	143	0.5	0.2	4.0	
00063012.dat	2000/06/30	11:38	7.00N	140.04E	006302401	143	0.4	0.0	0.0	
00063015.dat	2000/06/30	14:29	6.95N	140.04E	006302400	143	0.2	0.0	5.0	

Reference

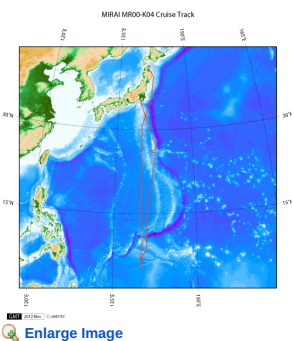
K. Yoneyama, M.Hanyu, S.Sueyoshi, F.Yoshiura, and M.Katsumata, 2002:Radiosonde observation from the ship in the tropical region. [\[PDF:400kbyte\]](#)
JAMSTECR, Vol.45, 31-39.

Others

- ・ Main processor: DigiCORA. MW11(before 2004 Jul.) [VAISALA, Finland]
- ・ Radiosonde Sensor: RS80 [VAISALA, Finland]
- ・ Launcher Location: 22m (from base line)

Note

Related Information



MR00-K04
Ship Name: MIRAI
Period: 2000-06-12 - 2000-07-05
Chief Scientist: Kunio Yoneyama (JAMSTEC)

Update History

2014-07-11	An observation data was registerd.
2014-06-13	An observation data was registerd.
2014-03-13	An observation data was registerd.
2012-12-25	An observation data was registerd.

JAMSTEC

[Site Policy](#)
[Privacy Policy](#)
[Application for Data and Samples](#)
[Data Policy](#)
What's New
[Update History](#)
[Feeds](#)

Lists

[Publication List](#)
[Amount of Public Info.](#)
Data
[Map Search](#)
[Data Tree](#)
[Detailed Search](#)

Information of the Ships

[NATSUSHIMA](#)
[KAIYO](#)
[YOKOSUKA](#)
[MIRAI](#)
[KAIREI](#)
[CHIKYU](#)
[KAIMEI](#)
[SHINSEI MARU](#)
[HAKUHO MARU](#)

Information of the Submersibles

[KAIKO](#)
[SHINKAI 2000](#)
[SHINKAI 6500](#)
[DEEP TOW](#)
[HYPER-DOLPHIN](#)
[URASHIMA](#)
[YOKOSUKA DEEP TOW](#)
[6K Camera DEEP TOW](#)
[6K Sonar DEEP TOW](#)
[KM-ROV](#)
[POWER GRAB SAMPLER \(SHELL\)](#)
[POWER GRAB SAMPLER \(CLOW\)](#)
[BMS](#)

Go to a Cruise Information

Cruise ID:

Go to a Dive Information

Dive ID:

Copyright 2011 Japan Agency for Marine-Earth Science and Technology



JAMSTEC 国立研究開発法人
海洋研究開発機構
JAPAN AGENCY FOR MARINE-EARTH SCIENCE AND TECHNOLOGY

MIRAI MR00-K04 Radiosonde

Last Modified: 2014-07-11

[ReadMe](#) [Observation Data](#) [Data Format](#)

Cruise ID: [MR00-K04](#)

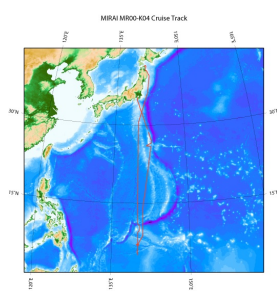
Radiosonde: Processed (DMO)-Corrected

Data Policy: [JAMSTEC](#)

Radiosonde Corrected

No.	Column	Description	Format	Unit	Remarks
1	3 - 8	Atmospheric pressure	f6.1	hPa	
2	10 - 15	Air temperature	f6.1	deg-C	'9999.0' is missing value.
3	17 - 22	Dew point temperature	f6.1	deg-C	'9999.0' is missing value.
4	24 - 27	Relative humidity	i4	%	'9999' is missing value.
5	29 - 34	Wind speed (zonal)	f6.1	m/sec	'9999.0' is missing value.
6	36 - 41	Wind speed (meridional)	f6.1	m/sec	'9999.0' is missing value.
7	44 - 48	Height (from sea level)	i5	m	'99999' is missing value.
8	49 - 50	Terminator	a2		CR+LF

Related Information



[Enlarge Image](#)

MR00-K04

Ship Name: MIRAI
Period: 2000-06-12 - 2000-07-05
Chief Scientist: Kunio Yoneyama (JAMSTEC)

Update History

2014-07-11	An observation data was registerd.
2014-06-13	An observation data was registerd.
2014-03-13	An observation data was registerd.
2012-12-25	An observation data was registerd.

JAMSTEC
[Site Policy](#)
[Privacy Policy](#)
[Application for Data and Samples](#)
[Data Policy](#)
What's New
[Update History](#)
[Feeds](#)

Lists
[Publication List](#)
[Amount of Public Info.](#)

Data
[Map Search](#)
[Data Tree](#)
[Detailed Search](#)

Information of the Ships
[NATSUSHIMA](#)
[KAIYO](#)
[YOKOSUKA](#)
[MIRAI](#)
[KAIREI](#)
[CHIKYU](#)
[KAIMEI](#)
[SHINSEI MARU](#)
[HAKUHO MARU](#)

Information of the Submersibles
[KAIKO](#)
[SHINKAI 2000](#)
[SHINKAI 6500](#)
[DEEP TOW](#)
[HYPER-DOLPHIN](#)
[URASHIMA](#)
[YOKOSUKA DEEP TOW](#)
[6K Camera DEEP TOW](#)
[6K Sonar DEEP TOW](#)
[KM-ROV](#)
[POWER GRAB](#)
[SAMPLER \(SHELL\)](#)
[POWER GRAB](#)
[SAMPLER \(CLOW\)](#)
[BMS](#)

Go to a Cruise Information

Cruise ID:

Go to a Dive Information

Dive ID:

MIRAI MR00-K04 Radiosonde

Last Modified: 2014-07-11

[ReadMe](#) [Observation Data](#) [Data Format](#)

Cruise ID: [MR00-K04](#)

Radiosonde: Processed (DMO)-Corrected

Data Policy: [JAMSTEC](#)

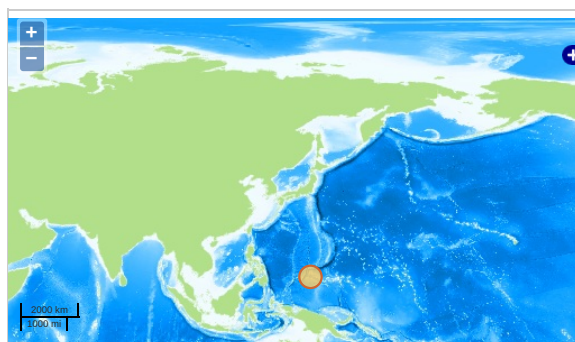
Observation Items: Atmospheric pressure, Air temperature, Dew point temperature, Relative humidity, Wind speed (zonal, meridional), Height

Science Keywords:

ATMOSPHERE > ATMOSPHERIC WATER VAPOR > DEW POINT TEMPERATURE
ATMOSPHERE > ATMOSPHERIC WATER VAPOR > HUMIDITY
ATMOSPHERE > ATMOSPHERIC TEMPERATURE > TEMPERATURE PROFILES
ATMOSPHERE > ATMOSPHERIC WINDS > UPPER LEVEL WINDS
ATMOSPHERE > ATMOSPHERIC WINDS > WIND PROFILES

Observation Map

- Clicking the icon displays a balloon with observation information.
- Then click the observation name, figures will be displayed.



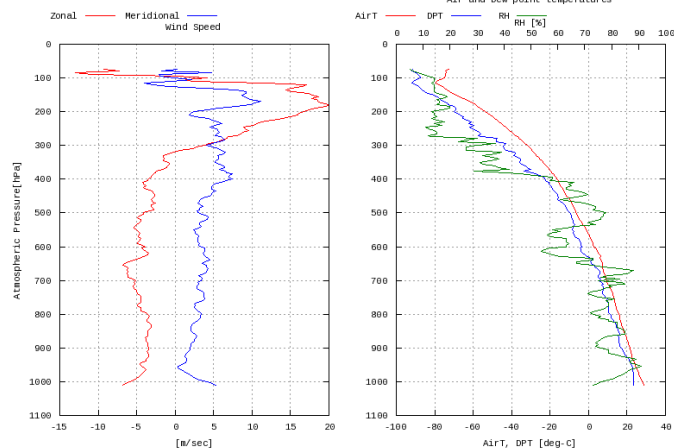
— ... Observation Line — ... Navigation ● ... Observation, Dive Point, Hole

Imagery reproduced from ...

Figures

00061900

MR00-K04: 00061900
Radiosonde



Data List

☐ File names

☐ 00061900.dat

☐ 00061903.dat

☐ 00061906.dat

☐ 00061909.dat

☐ 00061912.dat

☐ 00061915.dat

☐ 00061918.dat

☐ 00061921.dat

☐ 00062000.dat

☐ 00062003.dat

☐ 00062006.dat

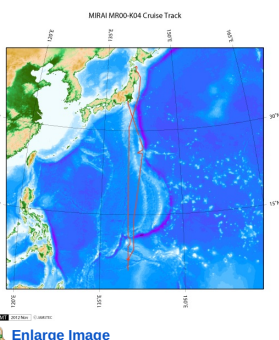
☐ 00062009.dat

☐ 00062012.dat

☐ 00062015.dat

	File names
	00062021.dat
	00062100.dat
	00062103.dat
	00062106.dat
	00062109.dat
	00062112.dat
	00062115.dat
	00062118.dat
	00062121.dat
	00062200.dat
	00062203.dat
	00062206.dat
	00062209.dat
	00062215.dat
	00062218.dat
	00062221.dat
	00062300.dat
	00062303.dat
	00062306.dat
	00062309.dat
	00062312.dat
	00062315.dat
	00062318.dat
	00062321.dat
	00062400.dat
	00062403.dat
	00062406.dat
	00062409.dat
	00062412.dat
	00062415.dat
	00062418.dat
	00062421.dat
	00062500.dat
	00062503.dat
	00062506.dat
	00062509.dat
	00062512.dat
	00062518.dat
	00062521.dat
	00062600.dat
	00062603.dat
	00062606.dat
	00062609.dat
	00062612.dat
	00062615.dat
	00062618.dat
	00062621.dat
	00062700.dat
	00062703.dat
	00062706.dat
	00062709.dat
	00062712.dat
	00062715.dat
	00062718.dat
	00062721.dat
	00062800.dat
	00062803.dat
	00062806.dat
	00062809.dat
	00062812.dat
	00062815.dat
	00062818.dat
	00062821.dat
	00062900.dat
	00062903.dat
	00062906.dat
	00062909.dat
	00062912.dat
	00062915.dat
	00062918.dat
	00062921.dat
	00063000.dat
	00063003.dat
	00063006.dat
	00063009.dat
	00063012.dat

Related Information



[Enlarge Image](#)

MR00-K04

Ship Name: MIRAI
Period: 2000-06-12 - 2000-07-05
Chief Scientist: Kunio Yoneyama (JAMSTEC)

Update History

2014-07-11	An observation data was registerd.
2014-06-13	An observation data was registerd.
2014-03-13	An observation data was registerd.
2012-12-25	An observation data was registerd.

JAMSTEC

Site Policy
Privacy Policy
Application for Data and Samples
Data Policy
What's New
Update History
Feeds

Lists

Publication List
Amount of Public Info.
Data
Map Search
Data Tree
Detailed Search

Information of the Ships

NATSUSHIMA
KAIYO
YOKOSUKA
MIRAI
KAIREI
CHIKYU
KAIMEI
SHINSEI MARU
HAKUHO MARU

Information of the Submersibles

KAIKO
SHINKAI 2000
SHINKAI 6500
DEEP TOW
HYPER-DOLPHIN
URASHIMA
YOKOSUKA DEEP TOW
6K Camera DEEP TOW
6K Sonar DEEP TOW
KM-ROV
POWER GRAB SAMPLER (SHELL)
POWER GRAB SAMPLER (CLOW)
BMS

Go to a Cruise Information

Cruise ID:

Go to a Dive Information

Dive ID:

