

MIRAI MR99-K01 Partial Pressure of CO₂ (pCO₂)

Last Modified: 2018-08-25

[ReadMe](#) [Observation Data](#) [Data Format](#)

Cruise ID: [MR99-K01](#)

Partial Pressure of CO₂ (pCO₂): Processed (PI)

Data Policy: [JAMSTEC](#)

Observation Items: CO₂, Air temperature, Atmospheric pressure, Wind direction, Wind speed, Sea surface temperature, Sea surface salinity

Science Keywords:

OCEANS > OCEAN CHEMISTRY > CARBON DIOXIDE

Cruise Report

http://www.godac.jamstec.go.jp/catalog/data/doc_catalog/media/MR99-K01_all.pdf

For Using Data

Principal Investigator

Masao Ishii (Meteorological Research Institute)

Use Constraints

See [Terms and Conditions](#) about constrain of use.

Data Citation

See [Terms and Conditions](#) about data citation.

Instrument

Instrument:

pCO₂ measurement system (- MR10-06)



Information on pCO₂ measurement

Instrument : pCO₂ measuring system ; Nippon ANS Ltd.

Method : Non-dispersive infrared gas analyzer (NDIR) / Equilibrator : showerhead-type

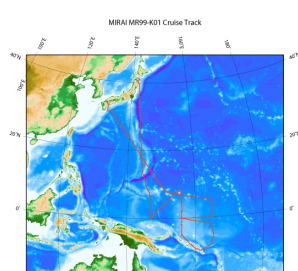
Precision : -

Reference Material/Calibration : MRI_87 scale

Please refer to Ishii et al. (2004) for calculation of sea-surface CO₂ concentration and for relationship between MRI_87 scale and WMO1985 mole fraction scale.

Ishii, M., S. Saito, T. Tokieda, T. Kawano, K. Matsumoto, and H. Y. Inoue (2004) Variability of Surface Layer CO₂ Parameters in the Western and Central Equatorial Pacific. Global Environmental Change in the Ocean and on Land, Eds., M. Shiyomi et al., pp. 59-94.

Related Information



[Enlarge Image](#)

MR99-K01

Ship Name: MIRAI

Period: 1999-02-07 - 1999-03-31

Chief Scientist: Yoshifumi Kuroda (JAMSTEC)

Project Name: [Tropical Ocean Climate Study (TOCS)]

Update History

2018-08-25	An observation data was registered.
2013-01-25	An observation data was registered.

JAMSTEC
Site Policy
Privacy Policy
Application for Data and Samples
Data Policy

What's New
Update History
Feeds

Lists
Publication List
Amount of Public Info.

Data
Map Search
Data Tree
Detailed Search

Information of the Ships
NATSUSHIMA
KAIYO
YOKOSUKA
MIRAI
KAIREI
CHIKYU
KAIMEI
SHINSEI MARU
HAKUHO MARU

Information of the Submersibles
KAIKO
SHINKAI 2000
SHINKAI 6500
DEEP TOW
HYPER-DOLPHIN
URASHIMA
YOKOSUKA DEEP TOW
6K Camera DEEP TOW
6K Sonar DEEP TOW

Go to a Cruise Information

Cruise ID:

Go to a Dive Information

Dive ID:

KM-ROV
POWER GRAB SAMPLER
(SHELL)
POWER GRAB SAMPLER
(CLOW)
BMS

Copyright 2011 Japan Agency for Marine-Earth Science and
Technology



JAMSTEC 国立研究開発法人
海洋研究開発機構
JAPAN AGENCY FOR MARINE-EARTH SCIENCE AND TECHNOLOGY

MIRAI MR99-K01 Partial Pressure of CO₂ (pCO₂)

Last Modified: 2018-08-25

[ReadMe](#) [Observation Data](#) [Data Format](#)

Cruise ID: [MR99-K01](#)

Partial Pressure of CO₂ (pCO₂): Processed (PI)

Data Policy: [JAMSTEC](#)

pCO₂ FORMAT_M

Data Format

The file is in variable length, comma separated text file (csv) format.

The line starts with "#" is a comment line which contains version information and so on.

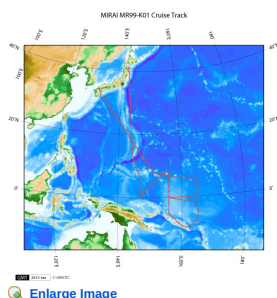
Column NO.	Column Heading	Comments
1	Ship	Ship name
2	Cruise	Cruise ID
3	Serial No.	Serial No.
4	Date	year (YYYY) in UTC
5		month (MM) in UTC
6		day (DD) in UTC
7	Time	hour (hh) in UTC
8		minute (mm) in UTC
9	Latitude	Latitude (degree) ; Positive in north
10	Longitude	Longitude (degree) ; degree in eastward (0 - 360)
11	xCO ₂ _Air	CO ₂ mixing ratio (ppm) in the air
12	F	Quality flag for xCO ₂ _Air
13	xCO ₂ _Sea	CO ₂ mixing ratio (ppm) in the sea surface water (*)
14	F	Quality flag for xCO ₂ _Sea
15	Wind_Dir	Wind direction (degree) ; Positive in clockwise from the north
16	Wind_Spd	Wind speed (m/s)
17	Atm_Prs	Barometric pressure (hPa)
18	Atm_Tmp.	Air temperature (degree-C)
19	SST	Sea surface temperature (degree-C)
20	F	Quality flag for SST
21	SSS	Sea surface salinity (PSU)
22	F	Quality flag for SSS
23	pH ₂ O	Vapor pressure of in-situ sea water (hPa)

Definition of Quality Control Flags

- 2 - Good
- 3 - Questionable
- 4 - Bad
- 5 - Not reported
- 9 - No data

*: Please refer to "Information on pCO₂ data" shown in ReadMe tab for xCO₂_Sea data calculation.

Related Information



[Enlarge Image](#)

MR99-K01

Ship Name: MIRAI

Period: 1999-02-07 - 1999-03-31

Chief Scientist: Yoshifumi Kuroda (JAMSTEC)

Project Name: [Tropical Ocean Climate Study (TOCS)]

Update History

2018-08-25	An observation data was registered.
2013-01-25	An observation data was registered.

JAMSTEC
[Site Policy](#)
[Privacy Policy](#)
[Application for Data and Samples](#)
[Data Policy](#)
[What's New](#)
[Update History](#)
[Feeds](#)

Lists
[Publication List](#)
[Amount of Public Info.](#)
Data
[Map Search](#)
[Data Tree](#)
[Detailed Search](#)

Information of the Ships
[NATSUSHIMA](#)
[KAIYO](#)
[YOKOSUKA](#)
[MIRAI](#)
[KAIREI](#)
[CHIKYU](#)
[KAIMEI](#)
[SHINSEI MARU](#)
[HAKUHO MARU](#)

Information of the Submersibles
[KAIKO](#)
[SHINKAI 2000](#)
[SHINKAI 6500](#)
[DEEP TOW](#)
[HYPER-DOLPHIN](#)
[URASHIMA](#)
[YOKOSUKA DEEP TOW](#)
[6K Camera DEEP TOW](#)
[6K Sonar DEEP TOW](#)
[KM-ROV](#)
[POWER GRAB](#)
[SAMPLER \(SHELL\)](#)
[POWER GRAB](#)
[SAMPLER \(CLOW\)](#)
[BMS](#)

Go to a Cruise Information

Cruise ID:

Go to a Dive Information

Dive ID:

MIRAI MR99-K01 Partial Pressure of CO2 (pCO2)

Last Modified: 2018-08-25

[ReadMe](#) [Observation Data](#) [Data Format](#)

Cruise ID: [MR99-K01](#)

Partial Pressure of CO2 (pCO2): Processed (PI)

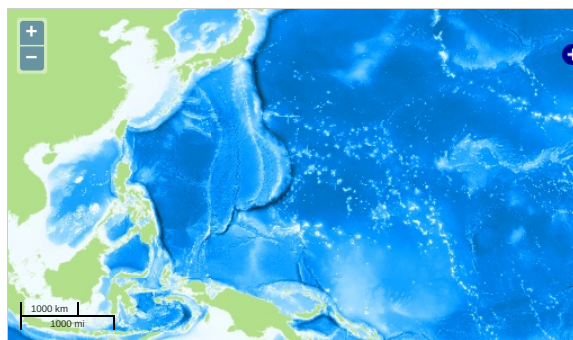
Data Policy: [JAMSTEC](#)

Observation Items: CO2, Air temperature, Atmospheric pressure, Wind direction, Wind speed, Sea surface temperature, Sea surface salinity

Science Keywords:

OCEANS > OCEAN CHEMISTRY > CARBON DIOXIDE

Observation Map



... Observation Line ... Navigation ... Observation, Dive Point, Hole

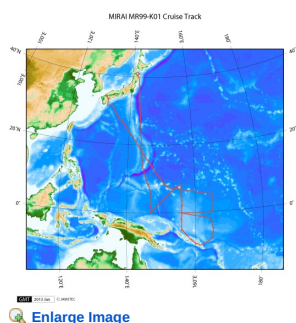
Imagery reproduced from ...

Data List

File names

☐ MR99-K01_pco2.zip

Related Information



[Enlarge Image](#)

MR99-K01

Ship Name: MIRAI
Period: 1999-02-07 - 1999-03-31
Chief Scientist: Yoshifumi Kuroda (JAMSTEC)
Project Name: [Tropical Ocean Climate Study (TOCS)]

Update History

2018-08-25	An observation data was registered.
2013-01-25	An observation data was registered.

JAMSTEC

[Site Policy](#)
[Privacy Policy](#)
[Application for Data and Samples](#)
[Data Policy](#)
[What's New](#)
[Update History](#)
[Feeds](#)

Lists

[Publication List](#)
[Amount of Public Info.](#)
[Data](#)
[Map Search](#)
[Data Tree](#)
[Detailed Search](#)

Information of the Ships

[NATSUSHIMA](#)
[KAIYO](#)
[YOKOSUKA](#)
[MIRAI](#)
[KAIREI](#)
[CHIKYU](#)
[KAIMEI](#)
[SHINSEI MARU](#)
[HAKUHO MARU](#)

Information of the Submersibles

[KAIKO](#)
[SHINKAI 2000](#)
[SHINKAI 6500](#)
[DEEP TOW](#)
[HYPER-DOLPHIN](#)
[URASHIMA](#)
[YOKOSUKA DEEP TOW](#)
[6K Camera DEEP TOW](#)
[6K Sonar DEEP TOW](#)
[KM-ROV](#)
[POWER GRAB SAMPLER \(SHELL\)](#)
[POWER GRAB SAMPLER \(CLOW\)](#)
[BMS](#)

Go to a Cruise Information

Cruise ID:

Go to a Dive Information

Dive ID: