

## MIRAI MR10-07 MAX-DOAS data

Last Modified: 2013-02-25

[ReadMe](#) [Observation Data](#)

Cruise ID: [MR10-07](#)

MAX-DOAS data: Processed (PI)

Data Policy: [JAMSTEC](#)

Observation Items:

Science Keywords:

### Data Information

MAX-DOAS (Multi-AXis Differential Optical Absorption Spectroscopy) is a technique measuring UV/Visible hyperspectra of scattered sunlight at several different elevation angles. The raw spectra are analyzed based on the DOAS method to derive the differential slant column density (DSCD) of the oxygen collision complex (O<sub>2</sub>-O<sub>2</sub> or O<sub>4</sub>) and NO<sub>2</sub>, using QDOAS software (<http://uv-vis.aeronomie.be/software/QDOAS/>).

### Cruise Report

[http://www.godac.jamstec.go.jp/catalog/data/doc\\_catalog/media/MR10-07\\_all.pdf](http://www.godac.jamstec.go.jp/catalog/data/doc_catalog/media/MR10-07_all.pdf)

### For Using Data

#### Principal Investigator

Hisahiro TAKASHIMA (Research Institute for Global Change (RIGC)  
, Environmental Biogeochemical Cycle Research Program (EBCRP)  
, Atmospheric Composition Research Team)

#### Use Constraints

Since MAX-DOAS is a remote sensing technique, further improvement in data quality is anticipated. It is recommended to contact the above investigator before use for publication.

#### Data Citation

Since MAX-DOAS is a remote sensing technique, further improvement in data quality is anticipated. It is recommended to contact the above investigator before use for publication.

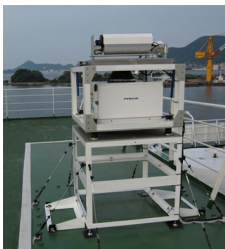
### Instrument

Instrument:

MAX-DOAS (Multi-AXis Differential Optical Absorption Spectroscopy)

Instrument Information:

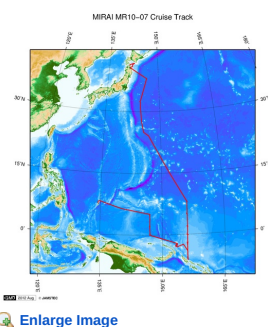
Daytime data only. The measured spectra were selected with a criterion for the elevation angle to be within  $\pm 0.2^\circ$  of the target elevation angle and averaged every 1 minute.



### Data Format

ext format. See the header of the data files for more details.

### Related Information



#### MR10-07

Ship Name: MIRAI  
Period: 2010-11-23 - 2010-12-30  
Chief Scientist: Yuji Kashino (JAMSTEC)  
Project Name: [Tropical Ocean Climate Study (TOCS), Station KEO]  
Proposal ▶ Tropical Ocean Climate Study  
Title:

### Update History

2013-02-25 An observation data was registerd.

Samples  
Data Policy  
  
What's New  
Update History  
Feeds

Data  
Map Search  
Data Tree  
Detailed Search

MIRAI  
KAIREI  
CHIKYU  
KAIMEI  
SHINSEI MARU  
HAKUHO MARU

SHINKAI 6500  
DEEP TOW  
HYPER-DOLPHIN  
URASHIMA  
YOKOSUKA DEEP TOW  
6K Camera DEEP TOW  
6K Sonar DEEP TOW  
KM-ROV  
POWER GRAB SAMPLER  
(SHELL)  
POWER GRAB SAMPLER  
(CLOW)  
BMS

Go to a Dive Information

Dive ID:

Copyright 2011 Japan Agency for Marine-Earth Science and Technology



**JAMSTEC** 国立研究開発法人  
海洋研究開発機構  
JAPAN AGENCY FOR MARINE-EARTH SCIENCE AND TECHNOLOGY

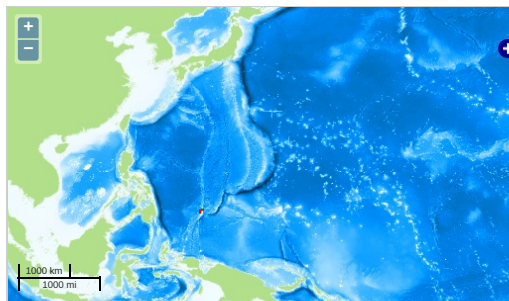
## MIRAI MR10-07 MAX-DOAS data

Last Modified: 2013-02-25

[ReadMe](#) [Observation Data](#)

Cruise ID: [MR10-07](#)  
MAX-DOAS data: Processed (PI)  
Data Policy: [JAMSTEC](#)  
Observation Items:  
Science Keywords:

### Observation Map



... Observation Line ... Navigation ... Observation, Dive Point, Hole

Imagery reproduced from ...

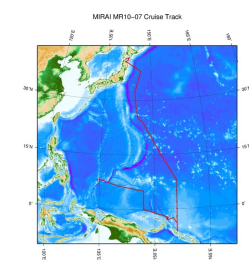
### Data List

[Add to Basket](#)

#### File names

☐ max\_mr10-07\_dscd.dat

### Related Information



[Enlarge Image](#)

#### MR10-07

Ship Name: MIRAI  
Period: 2010-11-23 - 2010-12-30  
Chief Scientist: Yuji Kashino (JAMSTEC)  
Project Name: [Tropical Ocean Climate Study (TOCS). Station KEO]  
Proposal ▶ Tropical Ocean Climate Study  
Title:

### Update History

2013-02-25 An observation data was registered.

#### JAMSTEC

[Site Policy](#)  
[Privacy Policy](#)  
[Application for Data and Samples](#)  
[Data Policy](#)  
  
[What's New](#)  
[Update History](#)  
[Feeds](#)

#### Lists

[Publication List](#)  
[Amount of Public Info.](#)  
  
[Data](#)  
[Map Search](#)  
[Data Tree](#)  
[Detailed Search](#)

#### Information of the Ships

[NATSUSHIMA](#)  
[KAIYO](#)  
[YOKOSUKA](#)  
[MIRAI](#)  
[KAIREI](#)  
[CHIKYU](#)  
[KAIMEI](#)  
[SHINSEI MARU](#)  
[HAKUHO MARU](#)

#### Information of the Submersibles

[KAIKO](#)  
[SHINKAI 2000](#)  
[SHINKAI 6500](#)  
[DEEP TOW](#)  
[HYPER-DOLPHIN](#)  
[URASHIMA](#)  
[YOKOSUKA DEEP TOW](#)  
[6K Camera DEEP TOW](#)  
[6K Sonar DEEP TOW](#)  
[KM-ROV](#)  
[POWER GRAB SAMPLER \(SHELL\)](#)  
[POWER GRAB SAMPLER \(CLOW\)](#)  
[BMS](#)

#### Go to a Cruise Information

Cruise ID:

#### Go to a Dive Information

Dive ID:

