

MIRAI MR12-02 Leg2 Radiosonde

Last Modified: 2014-08-09

ReadMe Observation Data Data Format

Cruise ID: [MR12-02 Leg2](#)

Radiosonde: Processed (DMO)-Corrected

Data Policy: [JAMSTEC](#)

Observation Items: Atmospheric pressure, Air temperature, Dew point temperature, Relative humidity, Wind speed (zonal, meridional), Height

Science Keywords:

ATMOSPHERE > ATMOSPHERIC WATER VAPOR > DEW POINT TEMPERATURE
ATMOSPHERE > ATMOSPHERIC WATER VAPOR > HUMIDITY
ATMOSPHERE > ATMOSPHERIC TEMPERATURE > TEMPERATURE PROFILES
ATMOSPHERE > ATMOSPHERIC WINDS > UPPER LEVEL WINDS
ATMOSPHERE > ATMOSPHERIC WINDS > WIND PROFILES

Cruise Report

http://www.godac.jamstec.go.jp/catalog/data/doc_catalog/media/MR12-02_leg1-2_all.pdf

For Using Data

Principal Investigator

Data Management Office

Use Constraints

See [Terms and Conditions](#) about constrain of use.

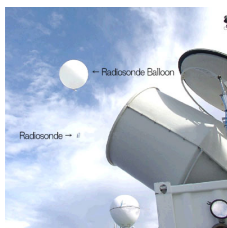
Data Citation

See [Terms and Conditions](#) about data citation.

Instrument

Instrument:

Radiosonde (MR11-03 - MR15-E01
Leg3)



Overview

Correction method

· Correction of ship body warming

Temperature and dew point temperature data near the surface (4.5 hPa from ship deck) were corrected by linear extrapolation using upper layer data, since these data were affected by ship body warming (cooling) at daytime (nighttime). Details for data processing and correction can be found in [Yoneyama et al. \(2002\)](#).

Note

Information about each radiosonde data are listed in the table of data page. It contains corrected sounding data, launch time, position, sensor information and calibration results for atmospheric pressure, air temperature and relative humidity. Calibration is conducted for every sensor prior to launch. Therefore, even raw data take in this calibration result. If the calibration result shows the positive value, it means that the calibrator showed the higher value than that of the sonde sensor. Filename of corrected data shows a sounding time (YYMMDDHH.***, where YY=year, MM=month, DD=day, and HH=hour) in UTC.

Data file	Launch time (UTC)		Launch station		Sensor information		Calibration result				Note
	Date	Time	Latitude	Longitude	Serial No.	Age	Atmospheric pressure[hPa]	Air temperature[deg-C]	Relative humidity1[%]	Relative humidity2[%]	
12062415.dat	2012/06/24	14:30	35.78N	141.62E	H0673374	140	0.43	-0.24	-0.45	-0.50	
12062603.dat	2012/06/26	02:30	30.06N	144.98E	H0653539	143	-0.11	-0.13	-0.45	-0.47	
12062715.dat	2012/06/27	14:30	30.00N	145.02E	H0653526	145	0.24	-0.16	-0.41	-0.41	
12062903.dat	2012/06/29	02:30	29.99N	145.00E	H0673368	144	0.31	-0.14	-0.41	-0.45	
12063015.dat	2012/06/30	14:30	29.96N	145.00E	H0653540	148	0.53	-0.16	-0.30	-0.33	
12070203.dat	2012/07/02	02:30	30.06N	144.96E	H0653572	149	-0.13	-0.15	-0.49	-0.51	Drizzle
12070306.dat	2012/07/03	05:30	32.32N	144.46E	G0540792	522	0.51	-0.20	-0.58	-0.57	
12070315.dat	2012/07/03	14:30	32.44N	144.72E	H0713076	148	0.11	-0.20	-0.53	-0.57	
12070408.dat	2012/07/04	07:30	32.42N	144.52E	G0540036	523	0.80	-0.26	-0.79	-0.80	
12070410.dat	2012/07/04	09:30	32.41N	144.59E	G0540031	523	0.66	-0.22	-0.28	-0.33	
12070412.dat	2012/07/04	11:30	32.40N	144.63E	G0540827	524	0.55	-0.21	-0.31	-0.27	
12070414.dat	2012/07/04	13:30	32.38N	144.60E	G0530515	525	0.81	-0.24	-0.19	-0.20	
12070416.dat	2012/07/04	15:30	32.39N	144.62E	G0540814	524	0.18	-0.15	-0.23	-0.30	
12070418.dat	2012/07/04	17:30	32.40N	144.61E	G0540035	524	0.69	-0.19	-0.27	-0.32	
12070420.dat	2012/07/04	19:30	32.38N	144.57E	G0540032	524	0.55	-0.18	-0.29	-0.22	
12070503.dat	2012/07/05	02:30	32.32N	144.53E	H0653532	152	-0.32	-0.19	-0.27	-0.29	
12070510.dat	2012/07/05	09:30	32.65N	144.30E	G0540812	524	-0.18	-0.24	-0.31	-0.45	
12070512.dat	2012/07/05	11:30	33.00N	144.05E	G2143228	412	0.41	-0.22	-0.49	-0.49	Fog

12070514.dat	2012/07/05 13:30	33.31N	143.82E	G2143236	413	0.57	-0.20	-0.54	-0.55	Fog
12070516.dat	2012/07/05 15:30	33.62N	143.60E	G2143236	413	0.25	-0.26	-0.55	-0.54	
12070518.dat	2012/07/05 17:30	33.94N	143.35E	G2143236	413	0.45	-0.25	-0.55	-0.56	Note
12070708.dat	2012/07/08 03:30	33.62N	143.60E	G2143236	413	0.35	-0.19	-0.41	-0.39	
12070904.dat	2012/07/09 03:30	36.93N	141.98E	H0653550	156	-0.05	-0.19	-0.57	-0.57	
12070915.dat	2012/07/09 14:30	38.45N	142.34E	H0713479	154	0.19	-0.14	-0.51	-0.49	

Reference

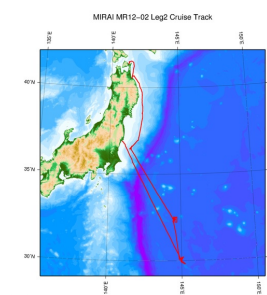
K. Yoneyama, M.Hanyu, S.Sueyoshi, F.Yoshiura, and M.Katsumata, 2002:Radiosonde observation from the ship in the tropical region.[PDF:400kbyte]
JAMSTECR, Vol.45, 31-39.

Others

- Main processor: DigiCORAlll, MW31(after 2011 Apr.) [VAISALA, Finland]
- Radiosonde Sensor: RS92-SGP, RS80-15GH, RS80-15G [VAISALA, Finland]
- * The observations which using the RS80 sensors were mentioned in the "Note" of data page (other observations were performed using the RS92 sensors).
- Launcher Location: 22m (from base line)

Note

Related Information



[Enlarge Image](#)

MR12-02 Leg2

Ship Name: MIRAI
Period: 2012-06-24 - 2012-07-12
Chief Scientist: Makio Honda (JAMSTEC)
Project Name: [Station S1, Station KEO]
Proposal ▶ Change in material cycles and ecosystem by the climate change and its feedback
Title:

Update History

2014-08-09 An observation data was registered.
2014-07-30 An observation data was registered.

JAMSTEC

Site Policy
Privacy Policy
Application for Data and Samples
Data Policy
What's New
Update History
Feeds

Lists

Publication List
Amount of Public Info.
Data
Map Search
Data Tree
Detailed Search

Information of the Ships

NATSUSHIMA
KAIYO
YOKOSUKA
MIRAI
KAIREI
CHIKYU
KAIMEI
SHINSEI MARU
HAKUHO MARU

Information of the Submersibles

KAIKO
SHINKAI 2000
SHINKAI 6500
DEEP TOW
HYPER-DOLPHIN
URASHIMA
YOKOSUKA DEEP TOW
6K Camera DEEP TOW
6K Sonar DEEP TOW
KM-ROV
POWER GRAB SAMPLER (SHELL)
POWER GRAB SAMPLER (CLOW)
BMS

Go to a Cruise Information

Cruise ID:

Go to a Dive Information

Dive ID:

Copyright 2011 Japan Agency for Marine-Earth Science and Technology



JAMSTEC
JAPAN AGENCY FOR MARINE-EARTH SCIENCE AND TECHNOLOGY

国立研究開発法人
海洋研究開発機構

MIRAI MR12-02 Leg2 Radiosonde

Last Modified: 2014-08-09

[ReadMe](#) [Observation Data](#) [Data Format](#)

Cruise ID: [MR12-02 Leg2](#)

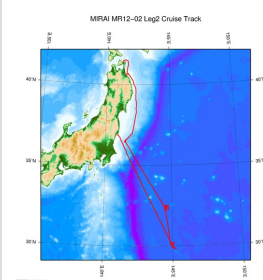
Radiosonde: Processed (DMO)-Corrected

Data Policy: [JAMSTEC](#)

Radiosonde Corrected

No.	Column	Description	Format	Unit	Remarks
1	3 - 8	Atmospheric pressure	f6.1	hPa	
2	10 - 15	Air temperature	f6.1	deg-C	'9999.0' is missing value.
3	17 - 22	Dew point temperature	f6.1	deg-C	'9999.0' is missing value.
4	24 - 27	Relative humidity	i4	%	'9999' is missing value.
5	29 - 34	Wind speed (zonal)	f6.1	m/sec	'9999.0' is missing value.
6	36 - 41	Wind speed (meridional)	f6.1	m/sec	'9999.0' is missing value.
7	44 - 48	Height (from sea level)	i5	m	'99999' is missing value.
8	49 - 50	Terminator	a2		CR+LF

Related Information



[Enlarge Image](#)

MR12-02 Leg2

Ship Name: MIRAI

Period: 2012-06-24 - 2012-07-12

Chief Scientist: Makio Honda (JAMSTEC)

Project Name: [Station S1, Station KEO]

Proposal ▶ Change in material cycles and ecosystem by the climate change and its feedback

Title:

Update History

2014-08-09	An observation data was registerd.
2014-07-30	An observation data was registerd.

JAMSTEC
[Site Policy](#)
[Privacy Policy](#)
[Application for Data and Samples](#)
[Data Policy](#)
What's New
[Update History](#)
[Feeds](#)

Lists
[Publication List](#)
[Amount of Public Info.](#)
Data
[Map Search](#)
[Data Tree](#)
[Detailed Search](#)

Information of the Ships
[NATSUSHIMA](#)
[KAIYO](#)
[YOKOSUKA](#)
[MIRAI](#)
[KAIREI](#)
[CHIKYU](#)
[KAIMEI](#)
[SHINSEI MARU](#)
[HAKUHO MARU](#)

Information of the Submersibles
[KAIKO](#)
[SHINKAI 2000](#)
[SHINKAI 6500](#)
[DEEP TOW](#)
[HYPER-DOLPHIN](#)
[URASHIMA](#)
[YOKOSUKA DEEP TOW](#)
[6K Camera DEEP TOW](#)
[6K Sonar DEEP TOW](#)
[KM-ROV](#)
[POWER GRAB](#)
[SAMPLER \(SHELL\)](#)
[POWER GRAB](#)
[SAMPLER \(CLOW\)](#)
[BMS](#)

Go to a Cruise Information

Cruise ID:

Go to a Dive Information

Dive ID:

MIRAI MR12-02 Leg2 Radiosonde

Last Modified: 2014-08-09

[ReadMe](#) [Observation Data](#) [Data Format](#)

Cruise ID: [MR12-02 Leg2](#)

Radiosonde: Processed (DMO)-Corrected

Data Policy: [JAMSTEC](#)

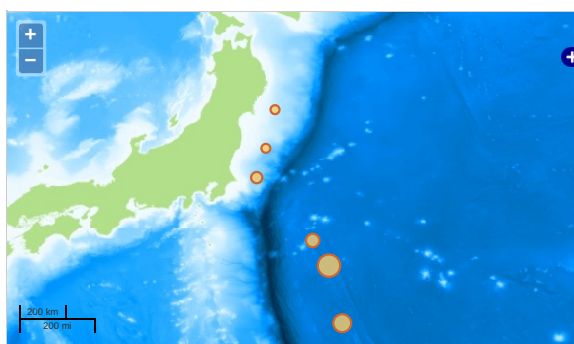
Observation Items: Atmospheric pressure, Air temperature, Dew point temperature, Relative humidity, Wind speed (zonal, meridional), Height

Science Keywords:

ATMOSPHERE > ATMOSPHERIC WATER VAPOR > DEW POINT TEMPERATURE
ATMOSPHERE > ATMOSPHERIC WATER VAPOR > HUMIDITY
ATMOSPHERE > ATMOSPHERIC TEMPERATURE > TEMPERATURE PROFILES
ATMOSPHERE > ATMOSPHERIC WINDS > UPPER LEVEL WINDS
ATMOSPHERE > ATMOSPHERIC WINDS > WIND PROFILES

Observation Map

- Clicking the icon displays a balloon with observation information.
- Then click the observation name, figures will be displayed.



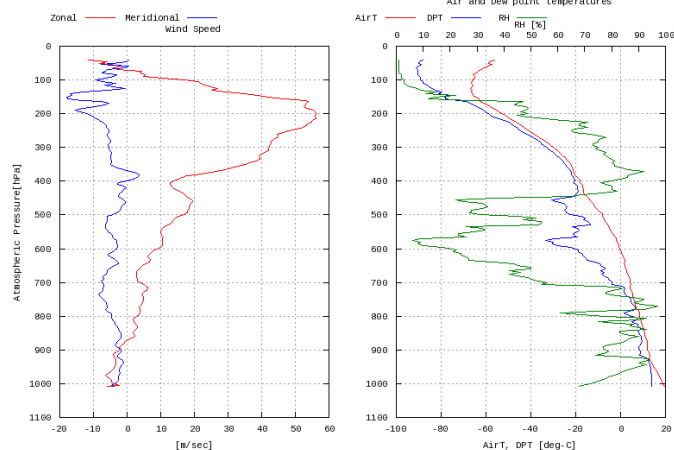
— ... Observation Line — ... Navigation ● ... Observation, Dive Point, Hole

Imagery reproduced from ...

Figures

12062415

MR12-02 Leg2: 12062415
Radiosonde



Data List

☐ File names

☐ 12062415.dat

☐ 12062603.dat

☐ 12062715.dat

☐ 12062903.dat

☐ 12063015.dat

☐ 12070203.dat

☐ 12070306.dat

☐ 12070315.dat

☐ 12070408.dat

☐ 12070410.dat

☐ 12070412.dat

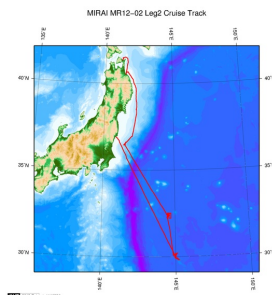
☐ 12070414.dat

☐ 12070416.dat

☐ 12070418.dat

<input type="checkbox"/>	File 00018
<input type="checkbox"/>	12070503.dat
<input type="checkbox"/>	12070510.dat
<input type="checkbox"/>	12070512.dat
<input type="checkbox"/>	12070514.dat
<input type="checkbox"/>	12070516.dat
<input type="checkbox"/>	12070518.dat
<input type="checkbox"/>	12070708.dat
<input type="checkbox"/>	12070904.dat
<input type="checkbox"/>	12070915.dat

Related Information



[Enlarge Image](#)

MR12-02 Leg2

Ship Name: MIRAI

Period: 2012-06-24 - 2012-07-12

Chief Scientist: Makio Honda (JAMSTEC)

Project Name: [Station S1, Station KEO]

Proposal ▶ Change in material cycles and ecosystem by the climate change and its feedback

Title:

Update History

2014-08-09	An observation data was registerd.
2014-07-30	An observation data was registerd.

JAMSTEC

[Site Policy](#)
[Privacy Policy](#)
[Application for Data and Samples](#)
[Data Policy](#)
[What's New](#)
[Update History](#)
[Feeds](#)

Lists

[Publication List](#)
[Amount of Public Info.](#)
Data
[Map Search](#)
[Data Tree](#)
[Detailed Search](#)

Information of the Ships

[NATSUSHIMA](#)
[KAIYO](#)
[YOKOSUKA](#)
[MIRAI](#)
[KAIREI](#)
[CHIKYU](#)
[KAIMEI](#)
[SHINSEI MARU](#)
[HAKUHO MARU](#)

Information of the Submersibles

[KAIKO](#)
[SHINKAI 2000](#)
[SHINKAI 6500](#)
[DEEP TOW](#)
[HYPER-DOLPHIN](#)
[URASHIMA](#)
[YOKOSUKA DEEP TOW](#)
[6K Camera DEEP TOW](#)
[6K Sonar DEEP TOW](#)
[KM-ROV](#)
[POWER GRAB SAMPLER \(SHELL\)](#)
[POWER GRAB SAMPLER \(CLOW\)](#)
[BMS](#)

Go to a Cruise Information

Cruise ID:

Go to a Dive Information

Dive ID:

Copyright 2011 Japan Agency for Marine-Earth Science and Technology



JAMSTEC 国立研究開発法人
海洋研究開発機構
JAPAN AGENCY FOR MARINE-EARTH SCIENCE AND TECHNOLOGY