

MIRAI MR00-K07 Leg2 Bottle Sampling Water Chemical Analysis

Last Modified: 2017-07-28

[ReadMe](#) [Observation Data](#) [Data Format](#) [Quality Information](#)

Cruise ID: [MR00-K07 Leg2](#)

Bottle Sampling Water Chemical Analysis: Processed (DMO)-QCed

Data Policy: [JAMSTEC](#)

Observation Items: Temperature, Salinity, Dissolved oxygen, Potential temperature, Density

Science Keywords:

OCEANS > OCEAN CHEMISTRY > OXYGEN
OCEANS > OCEAN CHEMISTRY > SALINITY
OCEANS > OCEAN TEMPERATURE > WATER TEMPERATURE
OCEANS > SALINITY/DENSITY > SALINITY
OCEANS > OCEAN TEMPERATURE > POTENTIAL TEMPERATURE

Cruise Report

http://www.godac.jamstec.go.jp/catalog/data/doc_catalog/media/MR00-K07_leg1-2_all.pdf

For Using Data

Principal Investigator

CTDTMP : Keisuke Mizuno (JAMSTEC)
CTDSAL : Keisuke Mizuno (JAMSTEC)
SALNTY : Keisuke Mizuno (JAMSTEC)
CTDOXY : Keisuke Mizuno (JAMSTEC)
OXYGEN : Keisuke Mizuno (JAMSTEC)

JAMSTEC / BPPT joint cruise in the Indonesian waters.

Use Constraints

See [Terms and Conditions](#) about constrain of use.

Data Citation

See [Terms and Conditions](#) about data citation.

Instrument

Instrument:

Salinity measurement system



Information on CTD data

(1) Temperature sensor

Model : SBE3, Sea-Bird Electronics, Inc.
Measurement range : -5.0 to +35degC
Accuracy : 0.001degC
Resolution : 0.0002degC

(2) Salinity sensor

Model : SBE4, Sea-Bird Electronics, Inc.
Measurement range : 0.0 to 7S/m
Accuracy : 0.0003S/m
Resolution : 0.00004S/m

(3) Pressure sensor

Model : SBE9plus, Sea-Bird Electronics, Inc.
Measurement range : up to 10500m
Accuracy : 0.015%F.S.
Resolution : 0.001%F.S.

(4) DO sensor

Model : SBE13, Sea-Bird Electronics, Inc.
Measurement range : 0-15ml/l(120% of surface saturation)
Accuracy : 0.1ml/l(2% of saturation)
Resolution : 0.01ml/l

Information on Chemical and Biological data

1. Dissolved Oxygen

(1) Instruments : Titrator: Model 716 DMS Titrino(Metrohm)
Detector: Pt electrode

(2) Methods : Winkler method/potentiometric method

(3) Precision : -

(4) Reference Material/Calibration: 0.0100N KIO₃ solution/compared standard to CSK standard solution (Wako pure chemical industries, Ltd.)

2. Salinity

(1) Instruments: Autosal salinometer model 8400B (Guildline Instruments Ltd.)

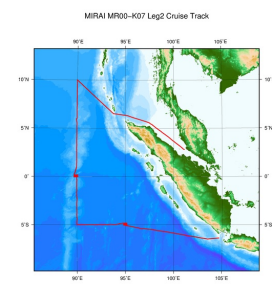
(4) Instruments: Autosal Salinometer Model 04000 (Guilford Instruments Ltd.)

(2) Methods : -

(3) Precision : -

(4) Reference Material/Calibration: IAPSO Standard Sea Water batch P137(Ocean Scientific International Ltd.)

Related Information



[Enlarge Image](#)

MR00-K07 Leg2

Ship Name: MIRAI

Period: 2000-11-09 - 2000-11-20

Chief Scientist: Keisuke Mizuno (JAMSTEC)

Project Name: [Tropical Ocean Climate Study (TOCS)]

Update History

2017-07-28	An observation data was registerd.
2016-10-11	An observation data was registerd.

JAMSTEC

[Site Policy](#)

[Privacy Policy](#)

[Application for Data and Samples](#)

[Data Policy](#)

[Data Tree](#)

[What's New](#)

[Update History](#)

[Feeds](#)

Lists

[Publication List](#)

[Amount of Public Info.](#)

Data

[Map Search](#)

[Data Tree](#)

[Detailed Search](#)

Information of the Ships

[NATSUSHIMA](#)

[KAIYO](#)

[YOKOSUKA](#)

[MIRAI](#)

[KAIREI](#)

[CHIKYU](#)

[KAIMEI](#)

[SHINSEI MARU](#)

[HAKUHO MARU](#)

Information of the Submersibles

[KAIKO](#)

[SHINKAI 2000](#)

[SHINKAI 6500](#)

[DEEP TOW](#)

[HYPER-DOLPHIN](#)

[URASHIMA](#)

[YOKOSUKA DEEP TOW](#)

[6K Camera DEEP TOW](#)

[6K Sonar DEEP TOW](#)

[KM-ROV](#)

[POWER GRAB SAMPLER \(SHELL\)](#)

[POWER GRAB SAMPLER \(CLOW\)](#)

[BMS](#)

Go to a Cruise Information

Cruise ID:

Go

Go to a Dive Information

Dive ID:

Go

Copyright 2011 Japan Agency for Marine-Earth Science and Technology



JAMSTEC

国立研究開発法人
海洋研究開発機構

JAPAN AGENCY FOR MARINE-EARTH SCIENCE AND TECHNOLOGY

MIRAI MR00-K07 Leg2 Bottle Sampling Water Chemical Analysis

Last Modified: 2017-07-28

[ReadMe](#) [Observation Data](#) [Data Format](#) [Quality Information](#)

Cruise ID: [MR00-K07 Leg2](#)

Bottle Sampling Water Chemical Analysis: Processed (DMO)-QCed

Data Policy: [JAMSTEC](#)

Exchange Format

Provided in the Exchange Format of CCHDO (CLIVAR and Carbon Hydrographic Data Office).

Please see the following link for details of Exchange Format.

[CCHDO | CLIVAR & Carbon Hydrographic Data Office](#)

Format Information

Column No.	Column Heading Mnemonic	Units Mnemonic	Reporting Precision FORTRAN Format	Comments
1	EXPCODE		A14	Expedition code
2	SECT		A6	For WOCE data the WHP section identifier
3	STNNBR		A6	Station number
4	CASTNO		I3	Cast number
5	SAMPNO		A7	Sample number
6	BTLNBR		A7	Bottle identification number
7	BTLNBR_FLAG_W		I1	Bottle quality flag
8	DATE		I8	Cast date(UTC)
9	TIME	UTC	I4	Cast time (UTC)
10	LATITUDE	DEG	F8.3	LATITUDE
11	LONGITUDE	DEG	F9.3	LONGITUDE
12	DEPTH	M	I5	Reported depth to bottom.
13	CTDDPT	M	F9.1	Depth
14	CTDDPT_FLAG_W		I1	Quality flag for CTD data
15	CTDPRS	DBAR	F9.1	Pressure
16	CTDPRS_FLAG_W		I1	Quality flag for CTD data
17	CTDTMP	ITS-90	F9.4	Temperature
18	CTDTMP_FLAG_W		I1	Quality flag for CTD data
19	CTDSAL	PSS-78	F9.4	CTD Salinity sensor
20	CTDSAL_FLAG_W		I1	Quality flag for CTD data
21	SALNTY	PSS-78	F9.4	Salinity
22	SALNTY_FLAG_W		I1	Quality flags for water samples
23	CTDOXY	UMOL/KG	F9.1	CTD Oxygen sensor
24	CTDOXY_FLAG_W		I1	Quality flag for CTD data
25	OXYGEN	UMOL/KG	F9.1	Oxygen
26	OXYGEN_FLAG_W		I1	Quality flags for water samples
27	THETA	DEG C	F9.4	Potential temperature
28	SIG0	KG/CUM	F9.4	Density

ODV Format

Please see the following link for details of ODV Format and ODV Software.

[Ocean Data View \(ODV\)](#)

Format Information

Column No.	Column Heading	Comments
1	Cruise	Cruise Label
2	Station	Station number_Cast number
3	Type	Station type
4	mon/day/yr	Cast date(UTC)
5	hh:mm	Cast time (UTC)
6	Latitude [degrees_north]	LATITUDE
7	Longitude [degrees_east]	LONGITUDE
8	Bot. Depth [m]	Reported depth to bottom.
9	CTDDPT[M]	Depth
10	QF	Quality flag for CTD data
11	CTDPRS[DBAR]	Pressure
12	QF	Quality flag for CTD data
13	CTDTMP[ITS-90]	Temperature
14	QF	Quality flag for CTD data
15	CTDSAL[PSS-78]	CTD Salinity sensor
16	QF	Quality flag for CTD data
17	SALNTY[PSS-78]	Salinity
18	QF	Quality flags for water samples
19	CTDOXY[UMOL/KG]	CTD Oxygen sensor
20	QF	Quality flag for CTD data
21	OXYGEN[UMOL/KG]	Oxygen
22	QF	Quality flags for water samples
23	THETA[DEG C]	Potential temperature
24	QF	Quality flag for CTD data
25	SIG0[KG/CUM]	Density
26	QF	Quality flag for CTD data
27	SAMPNO	Sample number
28	QF	Bottle quality flag

MIRAI MR00-K07 Leg2 Cruise Track



Enlarge Image

MR00-K07 Leg2
Ship Name: MIRAI
Period: 2000-11-09 - 2000-11-20
Chief Scientist: Keisuke Mizuno (JAMSTEC)
Project Name: [Tropical Ocean Climate Study (TOCS)]

Update History	
2017-07-28	An observation data was registerd.
2016-10-11	An observation data was registerd.

JAMSTEC
Site Policy
Privacy Policy
Application for Data and Samples
Data Policy
What's New
Update History
Feeds

Lists
Publication List
Amount of Public Info.
Data
Map Search
Data Tree
Detailed Search

Information of the Ships
NATSUSHIMA
KAIYO
YOKOSUKA
MIRAI
KAIREI
CHIKYU
KAIMEI
SHINSEI MARU
HAKUHO MARU

Information of the Submersibles
KAIKO
SHINKAI 2000
SHINKAI 6500
DEEP TOW
HYPER-DOLPHIN
URASHIMA
YOKOSUKA DEEP TOW
6K Camera DEEP TOW
6K Sonar DEEP TOW
KM-ROV
POWER GRAB
SAMPLER (SHELL)
POWER GRAB
SAMPLER (CLOW)
BMS

Go to a Cruise Information
Cruise ID:

Go to a Dive Information
Dive ID:

Copyright 2011 Japan Agency for Marine-Earth Science and Technology



JAMSTEC 国立研究開発法人
海洋研究開発機構
JAPAN AGENCY FOR MARINE-EARTH SCIENCE AND TECHNOLOGY

MIRAI MR00-K07 Leg2 Bottle Sampling Water Chemical Analysis

Last Modified: 2017-07-28

[ReadMe](#) [Observation Data](#) [Data Format](#) [Quality Information](#)

Cruise ID: [MR00-K07 Leg2](#)

Bottle Sampling Water Chemical Analysis: Processed (DMO)-QCed

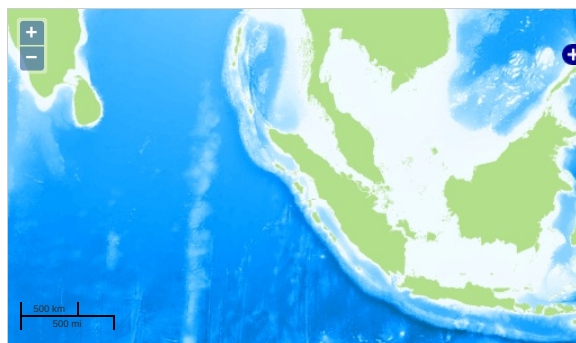
Data Policy: [JAMSTEC](#)

Observation Items: Temperature, Salinity, Dissolved oxygen, Potential temperature, Density

Science Keywords:

OCEANS > OCEAN CHEMISTRY > OXYGEN
OCEANS > OCEAN CHEMISTRY > SALINITY
OCEANS > OCEAN TEMPERATURE > WATER TEMPERATURE
OCEANS > SALINITY/DENSITY > SALINITY
OCEANS > OCEAN TEMPERATURE > POTENTIAL TEMPERATURE

Observation Map



... Observation Line ... Navigation ... Observation, Dive Point, Hole

Imagery reproduced from ...

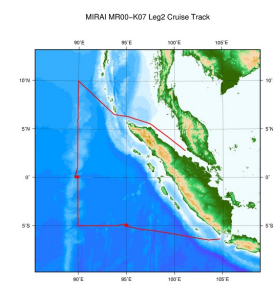
Data List

☐ File names

☐ MR00K0702_ex_bot.csv

☐ MR00K0702_odv_bot.txt

Related Information



[Enlarge Image](#)

MR00-K07 Leg2

Ship Name: MIRAI

Period: 2000-11-09 - 2000-11-20

Chief Scientist: Keisuke Mizuno (JAMSTEC)

Project Name: [Tropical Ocean Climate Study (TOCS)]

Update History

2017-07-28	An observation data was registerd.
2016-10-11	An observation data was registerd.

JAMSTEC

[Site Policy](#)
[Privacy Policy](#)
[Application for Data and Samples](#)
[Data Policy](#)

[What's New](#)
[Update History](#)
[Feeds](#)

Lists

[Publication List](#)
[Amount of Public Info.](#)

Data

[Map Search](#)
[Data Tree](#)
[Detailed Search](#)

Information of the Ships

[NATSUSHIMA](#)
[KAIYO](#)
[YOKOSUKA](#)
[MIRAI](#)
[KAIREI](#)
[CHIKYU](#)
[KAIMEI](#)
[SHINSEI MARU](#)
[HAKUHO MARU](#)

Information of the Submersibles

[KAIKO](#)
[SHINKAI 2000](#)
[SHINKAI 6500](#)
[DEEP TOW](#)
[HYPER-DOLPHIN](#)
[URASHIMA](#)
[YOKOSUKA DEEP TOW](#)
[6K Camera DEEP TOW](#)
[6K Sonar DEEP TOW](#)
[KM-ROV](#)
[POWER GRAB SAMPLER \(SHELL\)](#)
[POWER GRAB SAMPLER \(CLOW\)](#)
[BMS](#)

Go to a Cruise Information

Cruise ID:

Go to a Dive Information

Dive ID:

