

MIRAI MR09-04 Shipboard Three Component Magnetometer (STCM)

Last Modified: 2019-06-22

[ReadMe](#) [Observation Data](#) [Data Format](#)

Cruise ID: [MR09-04](#)

Shipboard Three Component Magnetometer (STCM): Processed (DMO)-Corrected

Data Policy: [JAMSTEC](#)

Observation Items: X, Y and Z component of geomagnetic field anomaly, Absolute value of geomagnetic field anomaly

Science Keywords:

OCEANS > MARINE GEOPHYSICS > MARINE MAGNETICS
SOLID EARTH > GEOMAGNETISM

Cruise Report

http://www.godac.jamstec.go.jp/catalog/data/doc_catalog/media/MR09-04_all.pdf

For Using Data

Principal Investigator

Data Management Office

Use Constraints

See [Terms and Conditions](#) about constrain of use.

Data Citation

See [Terms and Conditions](#) about data citation.

Period (UTC)

2009-11-03 22:15 – 2009-12-11 23:36

Instrument

Instrument:

Three component magnetometer



Overview

The data provided is for corrected three component geomagnetic field anomalies. Three-axes flux-gate sensors with ring-cored coils were fixed on the roof of the bridge.

They measure the following items :

- h-component : along track line component, positive for the bow direction pitch.
- s-component : across track line component, positive for the starboard side roll.
- v-component : vertical component, positive for the downward direction.

The effect of ship motion was eliminated by roll and pitch data which was provided by a tilt sensor. The apparent magnetic influence can be detected through a "Figure of 8 turn"(a pair of clockwise and anti-clockwise turns) on each cruise. If no Figure of 8 turn on the cruise was completed, the latest Figure of 8 turn from the previous cruise was applied (see section 4.). As a quality control, data of low reliability was removed (see section 5. for quality control criteria).

Synthetic geomagnetic field values were calculated from IGRF models.

Measurement System

(1) Magnetometer

Manufacturer : Tierra Technica Ltd.
Type : SFG1214
Measurement range : $\pm 100,000$ nT
Accuracy : less than 100 nT
Resolution : 1 nT
Location : Dry Laboratory

(2) Magnetic Sensor

Manufacturer : Tierra Technica Ltd.
Form : flux-gate sensors with ring-cored coils
Location : Foremast

(3) Attitude sensor and Gyro compass

Manufacturer : IXBLUE
Type : PHINS
Accuracy(Roll, Pitch) : 0.01 degree
Accuracy(Gyro) : 0.01 degree *Secant(Lat.)
Location : In the doppler radar dome

Duration of the Figure of 8 turn

On this cruise

Date (UTC)

2009-11-08 19:49:00 - 2009-11-08 20:17:00

2009-11-23 09:10:00 - 2009-11-23 09:38:00

2009-12-10 01:00:00 - 2009-12-10 01:28:00

Data processing

The following corrections and calculations were performed.

(1) Ship magnetization correction

$$Hob = ARPYF + Hp \text{ ---(i)}$$

Hob: Observed magnetic field vector (Ship coordinates)

A: Effect of induced magnetization of the ship

R: Matrix of rotation due to the roll

P: Matrix of rotation due to the pitch

Y: Matrix of rotation due to the heading

F: Geomagnetic field vector

Hp: Ship's permanent magnetic moment

Following the equation(i), we calculate the geomagnetic field F.

$$RPYF = BHob + Hbp \text{ ---(ii)}$$

B: coefficient of Figure of 8 turn

Hbp: Permanent magnetic field vector of the ship

Reference: Isezaki,N., A new shipboard three-component magnetometer, GEOPHYSICS. VOL.51,NO10(1986);P1992-1998

(2) International Geomagnetic Reference Field (IGRF)

Synthetic geomagnetic field values are calculated from IGRF 11th Generation models by using navigation data ; latitude, longitude and date.

Reference: IAGA Division V-MOD Geomagnetic Field Modeling[<http://www.ngdc.noaa.gov/IAGA/vmod/igrf.html>]

(3) Calculation of the geomagnetic field anomaly

$$An = F - Figrf$$

An: Geomagnetic field anomaly vector

F: Geomagnetic field vector

Figrf: Synthetic geomagnetic field vector from IGRF

(4) Quality control of data

Following criteria were used for removal of data of low reliability:

- Time error (inversion of time, continuation of same timestamps)
- Summation of the difference of heading by one second exceeding 20 degree per 5 minutes
- Ground speed of the ship below 3knot or exceeding 20knot
- X, Y, or Z component of geomagnetic field anomaly exceeding $\pm 4000nT$

(5) Filtering of the geomagnetic field anomaly

Due to the residual undulation of the ship, a 120 second length Gaussian filter was applied for each component of the geomagnetic field anomaly data.

(6) Output of the data

Time (UTC)

Latitude (degree)

Longitude (degree)

X: Northward (positive on the north) component of geomagnetic field anomaly (nT)

Y: Eastward (positive on the east) component of geomagnetic field anomaly (nT)

Z: Vertical (positive for downward) component of geomagnetic field anomaly (nT)

T: Absolute value of geomagnetic field anomaly (nT)

Coefficient of the Figure of 8 turn and Permanent magnetic field vector of the ship

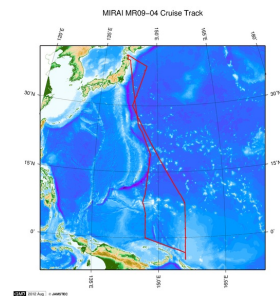
This coefficient was calculated from the Figure of 8 turn (see section 4.)

	0.9938	0.0436	0.0311		2120.2807
B=	-0.0467	1.0585	-0.0054	Hbp=	-140.5778
	0.0405	0.0053	0.9563		1323.7557

Note

- (1) File naming rule: Cruise ID_corr.stcm
- (2) Sampling rate: 10 seconds
- (3) Geodetic system: WGS84
- (4) If you would like the raw data set, please contact us from "Contact Us" above.

Related Information



[Enlarge Image](#)

MR09-04

Ship Name: MIRAI
Period: 2009-11-03 - 2009-12-12
Chief Scientist: Yuji Kashino (JAMSTEC)
Project Name: [Tropical Ocean Climate Study (TOCS), Station KEO]
Proposal ▶ Tropical Ocean Climate Study
Title:

Update History

2019-06-22	An observation data was registerd.
2018-04-18	An observation data was registerd.

2014-08-06
2012-09-28

An observation data was registerd.
An observation data was registerd.

JAMSTEC

[Site Policy](#)
[Privacy Policy](#)
[Application for Data and Samples](#)
[Data Policy](#)

[What's New](#)
[Update History](#)
[Feeds](#)

Lists

[Publication List](#)
[Amount of Public Info.](#)

Data
[Map Search](#)
[Data Tree](#)
[Detailed Search](#)

Information of the Ships

[NATSUSHIMA](#)
[KAIYO](#)
[YOKOSUKA](#)
[MIRAI](#)
[KAIREI](#)
[CHIKYU](#)
[KAIMEI](#)
[SHINSEI MARU](#)
[HAKUHO MARU](#)

Information of the Submersibles

[KAIKO](#)
[SHINKAI 2000](#)
[SHINKAI 6500](#)
[DEEP TOW](#)
[HYPER-DOLPHIN](#)
[URASHIMA](#)
[YOKOSUKA DEEP TOW](#)
[6K Camera DEEP TOW](#)
[6K Sonar DEEP TOW](#)
[KM-ROV](#)
[POWER GRAB SAMPLER \(SHELL\)](#)
[POWER GRAB SAMPLER \(CLOW\)](#)
[BMS](#)

Go to a Cruise Information

Cruise ID:

Go to a Dive Information

Dive ID:

Copyright 2011 Japan Agency for Marine-Earth Science and Technology



JAMSTEC

国立研究開発法人
海洋研究開発機構
JAPAN AGENCY FOR MARINE-EARTH SCIENCE AND TECHNOLOGY

MIRAI MR09-04 Shipboard Three Component Magnetometer (STCM)

Last Modified: 2019-06-22

[ReadMe](#) [Observation Data](#) [Data Format](#)

Cruise ID: [MR09-04](#)

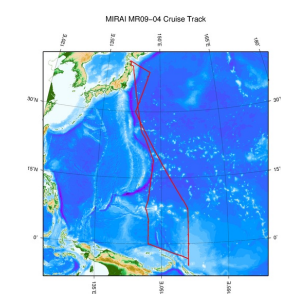
Shipboard Three Component Magnetometer (STCM): Processed (DMO)-Corrected

Data Policy: [JAMSTEC](#)

STCM Corrected

No.	Column	Content	Format	Unit	Remarks
1	1 - 8	Date	i4,i2,i2		YYYYMMDD (UTC)
2	10 -15	Time	i2,i2,i2		hhmmss (UTC)
3	17 -25	Latitude	f9.5	degree	No sign for the northern hemisphere. Negative for the southern hemisphere.
4	27 -36	Longitude	f10.5	degree	No sign for eastern hemisphere. Negative for the western hemisphere.
5	38 -43	X component of geomagnetic field anomaly	f6.0	nT	Positive on the north
6	45 -50	Y component of geomagnetic field anomaly	f6.0	nT	Positive on the east
7	52 -57	Z component of geomagnetic field anomaly	f6.0	nT	Positive for downward
8	59 -64	Absolute value of geomagnetic field anomaly	f6.0	nT	

Related Information



[Enlarge Image](#)

MR09-04

Ship Name: MIRAI

Period: 2009-11-03 - 2009-12-12

Chief Scientist: Yuji Kashino (JAMSTEC)

Project Name: [Tropical Ocean Climate Study (TOCS), Station KEO]

Proposal [▶](#) Tropical Ocean Climate Study

Title:

Update History

2019-06-22	An observation data was registerd.
2018-04-18	An observation data was registerd.
2014-08-06	An observation data was registerd.
2012-09-28	An observation data was registerd.

JAMSTEC

[Site Policy](#)
[Privacy Policy](#)
[Application for Data and Samples](#)
[Data Policy](#)

[What's New](#)
[Update History](#)
[Feeds](#)

Lists

[Publication List](#)
[Amount of Public Info.](#)

[Data](#)
[Map Search](#)
[Data Tree](#)
[Detailed Search](#)

Information of the Ships

[NATSUSHIMA](#)
[KAIYO](#)
[YOKOSUKA](#)
[MIRAI](#)
[KAIREI](#)
[CHIKYU](#)
[KAIMEI](#)
[SHINSEI MARU](#)
[HAKUHO MARU](#)

Information of the Submersibles

[KAIKO](#)
[SHINKAI 2000](#)
[SHINKAI 6500](#)
[DEEP TOW](#)
[HYPER-DOLPHIN](#)
[URASHIMA](#)
[YOKOSUKA DEEP TOW](#)
[6K Camera DEEP TOW](#)
[6K Sonar DEEP TOW](#)
[KM-ROV](#)
[POWER GRAB SAMPLER \(SHELL\)](#)
[POWER GRAB SAMPLER \(CLOW\)](#)
[BMS](#)

Go to a Cruise Information

Cruise ID:

Go to a Dive Information

Dive ID:

MIRAI MR09-04 Shipboard Three Component Magnetometer (STCM)

Last Modified: 2019-06-22

[ReadMe](#) [Observation Data](#) [Data Format](#)

Cruise ID: [MR09-04](#)

Shipboard Three Component Magnetometer (STCM): Processed (DMO)-Corrected

Data Policy: [JAMSTEC](#)

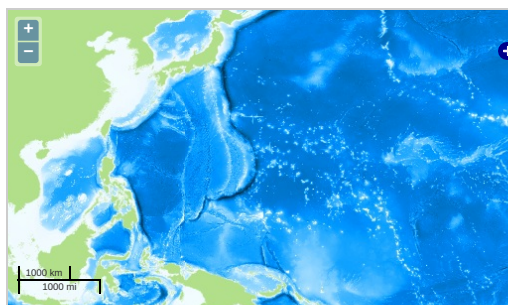
Observation Items: X, Y and Z component of geomagnetic field anomaly, Absolute value of geomagnetic field anomaly

Science Keywords:

OCEANS > MARINE GEOPHYSICS > MARINE
MAGNETICS

SOLID EARTH > GEOMAGNETISM

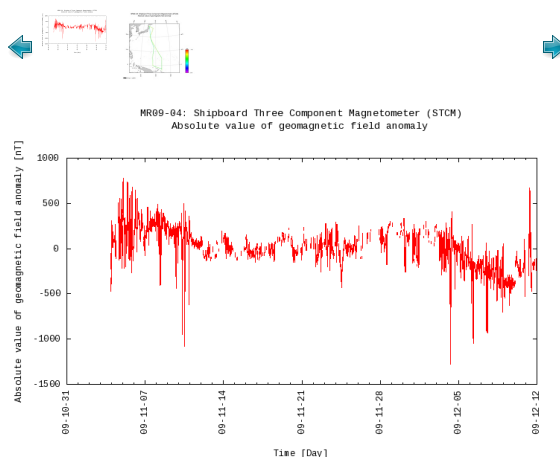
Observation Map



... Observation Line ... Navigation ... Observation, Dive Point, Hole

Imagery reproduced from ...

Figures



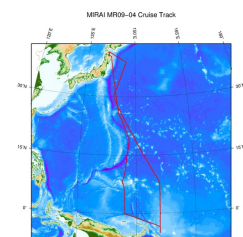
Data List

[Add to Basket](#)

File names

☐ MR09-04_corr.stcm

Related Information



[Enlarge Image](#)

MR09-04

Ship Name: MIRAI

Period: 2009-11-03 - 2009-12-12

Chief Scientist: Yuji Kashino (JAMSTEC)

Project Name: [Tropical Ocean Climate Study (TOCS), Station KEO]

Proposal ▶ Tropical Ocean Climate Study

Title:

Update History

2019-06-22	An observation data was registered.
2018-04-18	An observation data was registered.
2014-08-06	An observation data was registered.
2012-09-28	An observation data was registered.

[Site Policy](#)
[Privacy Policy](#)
[Application for Data and Samples](#)
[Data Policy](#)

[What's New](#)
[Update History](#)
[Feeds](#)

[Publication List](#)
[Amount of Public Info.](#)

[Data](#)
[Map Search](#)
[Data Tree](#)
[Detailed Search](#)

[NATSUSHIMA](#)
[KAIYO](#)
[YOKOSUKA](#)
[MIRAI](#)
[KAIREI](#)
[CHIKYU](#)
[KAIMEI](#)
[SHINSEI MARU](#)
[HAKUHO MARU](#)

[Submersibles](#)
[KAIKO](#)
[SHINKAI 2000](#)
[SHINKAI 6500](#)
[DEEP TOW](#)
[HYPER-DOLPHIN](#)
[URASHIMA](#)
[YOKOSUKA DEEP TOW](#)
[6K Camera DEEP TOW](#)
[6K Sonar DEEP TOW](#)
[KM-ROV](#)
[POWER GRAB SAMPLER \(SHELL\)](#)
[POWER GRAB SAMPLER \(CLOW\)](#)
[BMS](#)

Cruise ID:

[Go to a Dive Information](#)

Dive ID: