

## MIRAI MR14-01 Partial Pressure of CO<sub>2</sub> (pCO<sub>2</sub>)

Last Modified: 2017-12-14

[ReadMe](#) [Observation Data](#) [Data Format](#)

Cruise ID: [MR14-01](#)

Partial Pressure of CO<sub>2</sub> (pCO<sub>2</sub>): Processed (PI)

Data Policy: [JAMSTEC](#)

Observation Items: CO<sub>2</sub>, Air temperature, Atmospheric pressure, Wind direction, Wind speed, Sea surface temperature, Sea surface salinity

Science Keywords:

OCEANS > OCEAN CHEMISTRY > CARBON DIOXIDE

### Cruise Report

[http://www.godac.jamstec.go.jp/catalog/data/doc\\_catalog/media/MR14-01\\_all.pdf](http://www.godac.jamstec.go.jp/catalog/data/doc_catalog/media/MR14-01_all.pdf)

### For Using Data

#### Principal Investigator

Akihiko Murata (JAMSTEC)

#### Use Constraints

See [Terms and Conditions](#) about constrain of use.

#### Data Citation

See [Terms and Conditions](#) about data citation.

### Instrument

Instrument:

pCO<sub>2</sub> measurement system (MR10-07

- )



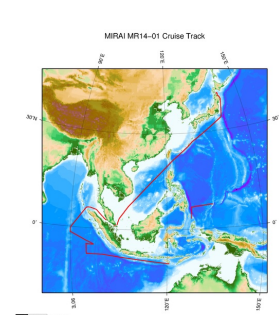
### Overview

Please see the readmefile for details of data.

Akihiko Murata

Research and Development Center for Global Change (RCGC),  
Japan Agency for Marine-Earth Science and Technology (JAMSTEC),  
2-15, Natsushima, Yokosuka, Kanagawa, Japan 237-0061,  
[murataa@jamstec.go.jp](mailto:murataa@jamstec.go.jp)

### Related Information



[Enlarge Image](#)

#### MR14-01

Ship Name: MIRAI  
Period: 2014-01-08 - 2014-02-13  
Chief Scientist: Iwao Ueki (JAMSTEC)  
Project Name: [Tropical Ocean Climate Study (TOCS)]  
Proposal ▶ Tropical Ocean Climate Study/Operation of TRITON Buoy  
Title:

### Update History

2017-12-14	An observation data was registerd.
2016-05-25	An observation data was registerd.
2016-02-13	An observation data was registerd.

### JAMSTEC

[Site Policy](#)  
[Privacy Policy](#)  
[Application for Data and Samples](#)  
[Data Policy](#)

**What's New**  
[Update History](#)  
[Feeds](#)

### Lists

[Publication List](#)  
[Amount of Public Info.](#)

### Data

[Map Search](#)  
[Data Tree](#)  
[Detailed Search](#)

### Information of the Ships

NATSUSHIMA  
KAIYO  
YOKOSUKA  
MIRAI  
KAIREI  
CHIKYU  
KAIMEI  
SHINSEI MARU  
HAKUHO MARU

### Information of the Submersibles

KAIKO  
SHINKAI 2000  
SHINKAI 6500  
DEEP TOW  
HYPER-DOLPHIN  
URASHIMA  
YOKOSUKA DEEP TOW  
6K Camera DEEP TOW  
6K Sonar DEEP TOW  
KM-ROV  
POWER GRAB SAMPLER (SHELL)  
POWER GRAB SAMPLER (CLOW)  
BMS

### Go to a Cruise Information

Cruise ID:

### Go to a Dive Information

Dive ID:



## MIRAI MR14-01 Partial Pressure of CO2 (pCO2)

Last Modified: 2017-12-14

[ReadMe](#) [Observation Data](#) [Data Format](#)

Cruise ID: [MR14-01](#)

Partial Pressure of CO2 (pCO2) Processed (PI)

Data Policy: [JAMSTEC](#)

### pCO2 FORMAT\_J (MR11-08-)

#### Air-xCO<sub>2</sub>

The file is in fixed comma separated text file (csv) format.

The "missing value" is defined as -999.

Column NO.	Column Heading	Comments
1	Date (UTC)	Year, Month, Day
2	Time (UTC)	Hour, Minute, Second
3	Latitude (degree)	Positive in north
4	Longitude (degree)	Degree in eastward (0 - 360)
5	Sea surface temperature (°C)	
6	Sea surface salinity (PSU)	
7	Air pressure (hPa)	
8	Wind direction (degree)	
9	Wind speed (m/s)	
10	xCO2 in dry air (ppmv)	

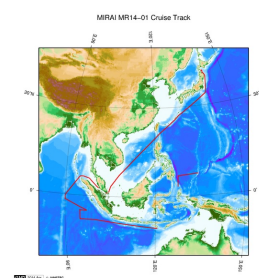
#### Sea-xCO<sub>2</sub>

The file is in fixed comma separated text file (csv) format.

The "missing value" is defined as -999.

Column NO.	Column Heading	Comments
1	Date (UTC)	Year, Month, Day
2	Time (UTC)	Hour, Minute, Second
3	Latitude (degree)	Positive in north
4	Longitude (degree)	Degree in eastward (0 - 360)
5	Sea surface temperature (°C)	
6	Sea surface salinity (PSU)	
7	Equilibrator temperature (°C)	
8	Equilibrator pressure (hPa)	
9	Air pressure (hPa)	
10	xCO2 in equilibrator (ppmv)	
11	pCO2 in equilibrator (µatm)	
12	pCO2 at SST (µatm)	
13	xCO2 in dry air (ppmv)	

### Related Information



[Enlarge Image](#)

#### MR14-01

Ship Name: MIRAI  
Period: 2014-01-08 - 2014-02-13  
Chief Scientist: Iwao Ueki (JAMSTEC)  
Project Name: [Tropical Ocean Climate Study (TOCS)]  
Proposal ▶ Tropical Ocean Climate Study/Operation of TRITON Buoy  
Title:

### Update History

2017-12-14	An observation data was registered.
2016-05-25	An observation data was registered.
2016-02-13	An observation data was registered.

JAMSTEC  
[Site Policy](#)  
[Privacy Policy](#)  
[Application for Data and Samples](#)  
[Data Policy](#)  
[What's New](#)  
[Update History](#)  
[Feeds](#)

[Lists](#)  
[Publication List](#)  
[Amount of Public Info.](#)  
[Data](#)  
[Map Search](#)  
[Data Tree](#)  
[Detailed Search](#)

[Information of the Ships](#)  
NATSUSHIMA  
KAIYO  
YOKOSUKA  
MIRAI  
KAIREI  
CHIKYU  
KAIMEI  
SHINSEI MARU  
HAKUHO MARU

[Information of the Submersibles](#)  
KAIKO  
SHINKAI 2000  
SHINKAI 6500  
DEEP TOW  
HYPER-DOLPHIN  
URASHIMA  
YOKOSUKA DEEP TOW  
6K Camera DEEP TOW  
6K Sonar DEEP TOW  
KM-ROV  
POWER GRAB  
SAMPLER (SHELL)  
POWER GRAB  
SAMPLER (CLOW)  
BMS

#### Go to a Cruise Information

Cruise ID:

#### Go to a Dive Information

Dive ID:

## MIRAI MR14-01 Partial Pressure of CO<sub>2</sub> (pCO<sub>2</sub>)

Last Modified: 2017-12-14

[ReadMe](#) [Observation Data](#) [Data Format](#)

Cruise ID: [MR14-01](#)

Partial Pressure of CO<sub>2</sub> (pCO<sub>2</sub>): Processed (PI)

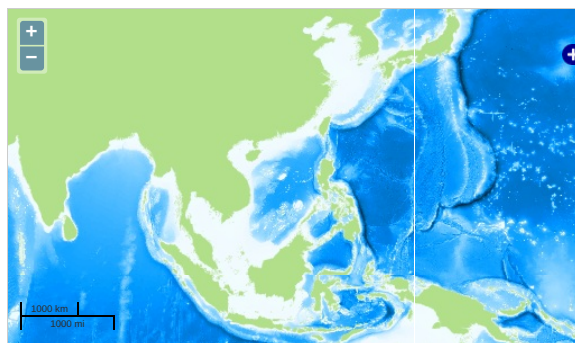
Data Policy: [JAMSTEC](#)

Observation Items: CO<sub>2</sub>, Air temperature, Atmospheric pressure, Wind direction, Wind speed, Sea surface temperature, Sea surface salinity

Science Keywords:

OCEANS > OCEAN CHEMISTRY > CARBON DIOXIDE

### Observation Map



... Observation Line ... Navigation ... Observation, Dive Point, Hole

### Data List

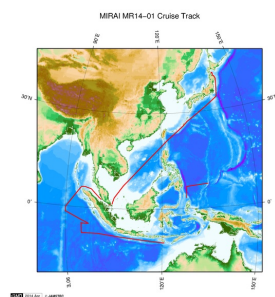
☐ File names

☐ MR14-01\_air.csv

☐ MR14-01\_sea.csv

☐ Readmefile.pdf

### Related Information



[Enlarge Image](#)

#### MR14-01

Ship Name: MIRAI

Period: 2014-01-08 - 2014-02-13

Chief Scientist: Iwao Ueki (JAMSTEC)

Project Name: [Tropical Ocean Climate Study (TOCS)]

Proposal ▶ Tropical Ocean Climate Study/Operation of TRITON Buoy

Title:

### Update History

2017-12-14	An observation data was registered.
2016-05-25	An observation data was registered.
2016-02-13	An observation data was registered.

#### JAMSTEC

[Site Policy](#)  
[Privacy Policy](#)  
[Application for Data and Samples](#)  
[Data Policy](#)

[What's New](#)  
[Update History](#)  
[Feeds](#)

#### Lists

[Publication List](#)  
[Amount of Public Info.](#)  
  
[Data](#)  
[Map Search](#)  
[Data Tree](#)  
[Detailed Search](#)

#### Information of the Ships

[NATSUSHIMA](#)  
[KAIYO](#)  
[YOKOSUKA](#)  
[MIRAI](#)  
[KAIREI](#)  
[CHIKYU](#)  
[KAIMEI](#)  
[SHINSEI MARU](#)  
[HAKUHO MARU](#)

#### Information of the Submersibles

[KAIKO](#)  
[SHINKAI 2000](#)  
[SHINKAI 6500](#)  
[DEEP TOW](#)  
[HYPER-DOLPHIN](#)  
[URASHIMA](#)  
[YOKOSUKA DEEP TOW](#)  
[6K Camera DEEP TOW](#)  
[6K Sonar DEEP TOW](#)  
[KM-ROV](#)  
[POWER GRAB SAMPLER \(SHELL\)](#)  
[POWER GRAB SAMPLER \(CLOW\)](#)  
[BMS](#)

#### Go to a Cruise Information

Cruise ID:

#### Go to a Dive Information

Dive ID: