

NATSUSHIMA NT15-03 Navigation

Last Modified: 2022-01-28

[ReadMe](#) [Observation Data](#) [Data Format](#)

Cruise ID: [NT15-03](#)

Navigation: Processed (DMO)-QCed

Data Policy: [JAMSTEC](#)

Observation Items:

Science Keywords:

For Using Data

Principal Investigator

Data Management Office

Technology development program for enhancing utilization of marine resources (MEXT): Development of systems for wide area survey of seafloor mineral resources

Use Constraints

See [Terms and Conditions](#) about constrain of use.

Data Citation

See [Terms and Conditions](#) about data citation.

Instrument

Instrument:

Radio navigation system



Overview

The following information is continuously collected and recorded as the Navigation QCed data during the cruise of R/V NATSUSHIMA.

Time
Location
Surface temperature
Wind direction and velocity
Current direction and velocity
Water depth

Data are recorded every one minute, and data file named after cruise code.

System

Manufacturer:SENA Co., Ltd.

Model: Sena Advanced Integrated Navigation System

Sensor specifications

1)GPS

Manufacturer: Trimble Navigation Limited (Receiver)

Fugro Survey Limited (D-GPS)

Model: SPS751 (Receiver)

Starfix-XP (D-GPS)

Location: Mast [starboard side]

Mast [port side]

2)Thermometer (seawater temperature)

Manufacturer:Murayama DENKI Ltd.

Model: DT-3110ARZ

Range: -10 - 50degC

Accuracy: +/-0.1degC

3)Doppler sonar

Manufacturer:FURUNO ELECTRIC CO., LTD.

Model: DS-30

Range: Ship speed: -10.00 - +40.00knot [Cross direction]

-9.99 - +9.99knot [Horizontal direction]

Current direction and speed: 0.0 - 9.9knot [All direction]

Accuracy: Current speed: +/- (2.0%+0.2knot)

4)Multi narrow beam echo sounder

Manufacturer:RESON Inc.

Model: SeaBat 8160

Frequency: 50kHz

Range: Max 3000m

5)Anemometer

Manufacturer:Nunotani Nautical Instrument Mfg. Co., Ltd.

Altitude: 20m (above sea level)

Range: Wind direction: all direction

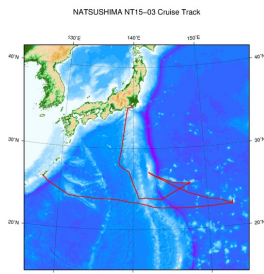
Wind speed: 2 - 60m/s

Accuracy: Wind direction: +/-5degree

Wind speed: 10m/s or less +/-0.5m/s

10m/s or more +/-0.5%

Related Information



[Enlarge Image](#)

NT15-03
Ship Name: NATSUSHIMA
Period: 2015-01-29 - 2015-02-20
Chief Scientist: Blair Thornton (The University of Tokyo)

Update History

2022-01-28	An observation data was registerd.
------------	------------------------------------

JAMSTEC
[Site Policy](#)
[Privacy Policy](#)
[Application for Data and Samples](#)
[Data Policy](#)

What's New
[Update History](#)
[Feeds](#)

Lists
[Publication List](#)
[Amount of Public Info.](#)

Data
[Map Search](#)
[Data Tree](#)
[Detailed Search](#)

Information of the Ships
NATSUSHIMA
KAIYO
YOKOSUKA
MIRAI
KAIREI
CHIKYU
KAIMEI
SHINSEI MARU
HAKUHO MARU

Information of the Submersibles
KAIKO
SHINKAI 2000
SHINKAI 6500
DEEP TOW
HYPER-DOLPHIN
URASHIMA
YOKOSUKA DEEP TOW
6K Camera DEEP TOW
6K Sonar DEEP TOW
KM-ROV
POWER GRAB SAMPLER (SHELL)
POWER GRAB SAMPLER (CLOW)
BMS

Go to a Cruise Information

Cruise ID:

Go to a Dive Information

Dive ID:

Copyright 2011 Japan Agency for Marine-Earth Science and Technology

JAMSTEC 国立研究開発法人
海洋研究開発機構
JAPAN AGENCY FOR MARINE-EARTH SCIENCE AND TECHNOLOGY

NATSUSHIMA NT15-03 Navigation

Last Modified: 2022-01-28

[ReadMe](#) [Observation Data](#) [Data Format](#)

 Cruise ID: **NT15-03**

Navigation: Processed (DMO)-QCed

 Data Policy: **JAMSTEC**

Navigation Qced

The one record of this data has 117 bytes of data part and 12 bytes of flag part.

Data part

No.	Column	Content	Format	Unit	Remarks
1	1 - 8	Date	i4,i2,i2		YYYYMMDD (UTC)
2	10 - 15	Time	i2,i2,i2		hhmmss (UTC)
3	17 - 19	Datum	a3		W84:WGS84 TD_:TOKYO DATUM
4	21 - 31	Latitude	i2,x1,f7.4,a1	degree - minute	dd-mm.mmmN(S)
5	33 - 44	Longitude	i3,x1,f7.4,a1	degree - minute	ddd-mm.mmmE(W)
6	46 - 49	Ship speed (Ground)	f4.1	knot	
7	51 - 55	Course (Ground)	f5.1	degree	
8	57 - 60	Ship speed (Water)	f4.1	knot	*1
9	62 - 66	Gyro	f5.1	degree	
10	68 - 72	Air temperature	f5.1	deg-C	
11	74 - 78	Sea surface temperature (SST)	f5.2	deg-C	
12	80 - 85	Atmospheric pressure	f6.1	hPa	Adjusted to the sea surface level
13	87 - 89	Relative humidity	i3	%	
14	91 - 93	True wind direction	i3	degree	Averaged over the previous 6 seconds *2
15	95 - 98	True wind speed	f4.1	m/sec	Averaged over the previous 6 seconds *2 No anemometer height adjustment
16	100 - 106	Depth	f7.1	m	
17	108 - 112	Current direction	f5.1	degree	Calculated value
18	114 - 117	Current speed	f4.1	knot	Calculated value

Flag part

No.	Column	Description	Format	Remarks
19	119	Flag 1	i1	QC flag for 'Latitude' and 'Longitude'
20	120	Flag 2	i1	QC flag for 'Ship speed (Ground)'
21	121	Flag 3	i1	QC flag for 'Course (Ground)'
22	122	Flag 4	i1	QC flag for 'Ship speed (Water)'
23	123	Flag 5	i1	QC flag for 'Gyro'
24	124	Flag 6	i1	QC flag for 'Air temperature'
25	125	Flag 7	i1	QC flag for 'Sea Surface Temperature (SST)'
26	126	Flag 8	i1	QC flag for 'Atmospheric pressure'
27	127	Flag 9	i1	QC flag for 'Relative humidity'
28	128	Flag 10	i1	QC flag for 'Wind direction' and 'Wind speed'
29	129	Flag 11	i1	QC flag for 'Depth'
30	130	Flag 12	i1	QC flag for 'Current direction' and 'Current speed'

*1 The plus and minus sign of No.8 [Ship speed (Water)] about R/V KAIREI indicates the velocity of direction of a bow and stem.

*2 No.14 [True wind direction] and No.15 [True wind speed] about R/V SHINSEI MARU are instantaneous value.

* The terminator of each record is 'CR+LF' code.

* Missing value and format error value are filled with '9'.

Definition of Quality Control Flags

Flag 1 : Longitude and Latitude

- 1 - accepted
- 2 - questionable value
- 4 - failed in location check
- 9 - system error or input error

Flag 2 : Ship speed (ground)

- 1 - accepted
- 2 - questionable value
- 4 - failed range check (under 20 knots)
- 9 - system error or input error

Flag 3 : Course (ground)

- 1 - accepted
- 2 - questionable value
- 4 - failed range check (0 ~ 360 degree)
- 9 - system error or input error

Flag 4 : Ship speed (water)

- 1 - accepted
- 4 - failed range check (under 20 knots)
- 9 - system error or input error

9 - system error or input error

Flag 5 : Gyro

- 1 - accepted
- 4 - failed range check (0 ~ 360 degree)
- 9 - system error or input error

Flag 6 : Air temperature

- 3 - assumed good*
- 4 - failed range check (-20 ~ 40 degC)
- 9 - system error or input error

Flag 7 : Sea surface temperature

- 3 - assumed good*
- 4 - failed range check (-3 ~ 37 degC)
- 9 - system error or input error

Flag 8 : Atmospheric pressure

- 3 - assumed good*
- 4 - failed range check (890 ~ 1040 hPa)
- 9 - system error or input error

Flag 9 : Relative humidity

- 3 - assumed good*
- 4 - failed range check (0 ~ 100 %)
- 9 - system error or input error

Flag 10 : Wind direction and wind speed

- 3 - assumed good*
- 4 - failed range check (0 ~ 360 degree : wind direction, 0 ~ 60 m/s : wind speed)
- 9 - system error or input error

Flag 11 : Depth

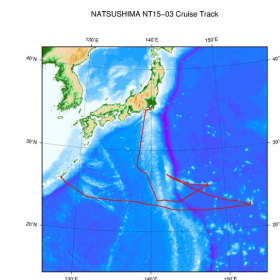
- 3 - assumed good*
- 4 - failed range check (4 ~ 11000 m)
- 9 - system error or input error

Flag 12 : Current direction and current speed

- 3 - assumed good*
- 4 - failed range check (0 ~ 360 degree : current direction, 0 ~ 5 knots : current speed)
- 9 - system error or input error

* 'assumed good' means that this data passed range check but may contains leap or inappropriate zero.

Related Information



[Enlarge Image](#)

NT15-03

Ship Name: NATSUSHIMA
Period: 2015-01-29 - 2015-02-20
Chief Scientist: Blair Thornton (The University of Tokyo)

Update History

2022-01-28 An observation data was registerd.

JAMSTEC

[Site Policy](#)
[Privacy Policy](#)
[Application for Data and Samples](#)
[Data Policy](#)

[What's New](#)
[Update History](#)
[Feeds](#)

Lists

[Publication List](#)
[Amount of Public Info.](#)

Data

[Map Search](#)
[Data Tree](#)
[Detailed Search](#)

Information of the Ships

[NATSUSHIMA](#)
[KAIYO](#)
[YOKOSUKA](#)
[MIRAI](#)
[KAIREI](#)
[CHIKYU](#)
[KAIMEI](#)
[SHINSEI MARU](#)
[HAKUHO MARU](#)

Information of the Submersibles

[KAIKO](#)
[SHINKAI 2000](#)
[SHINKAI 6500](#)
[DEEP TOW](#)
[HYPER-DOLPHIN](#)
[URASHIMA](#)
[YOKOSUKA DEEP TOW](#)
[6K Camera DEEP TOW](#)
[6K Sonar DEEP TOW](#)
[KM-ROV](#)
[POWER GRAB SAMPLER \(SHELL\)](#)
[POWER GRAB SAMPLER \(CLOW\)](#)
[BMS](#)

Go to a Cruise Information

Cruise ID:

Go to a Dive Information

Dive ID:

NATSUSHIMA NT15-03 Navigation

Last Modified: 2022-01-28

[ReadMe](#) [Observation Data](#) [Data Format](#)

Cruise ID: **NT15-03**

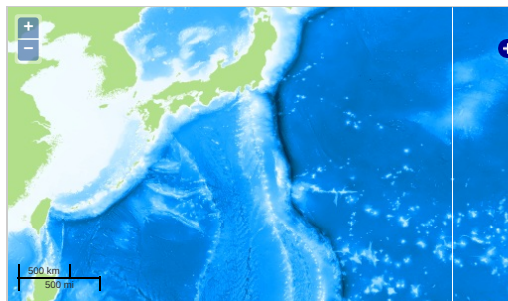
Navigation: Processed (DMO)-QCed

Data Policy: [JAMSTEC](#)

Observation Items:

Science Keywords:

Observation Map



— ... Observation Line — ... Navigation ● ... Observation, Dive Point, Hole

Imagery reproduced from ...

Figures

NT15-03: Navigation



GMT 2022 Jan © JAMSTEC

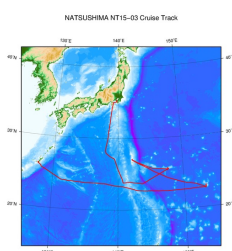
Data List

[Add to Basket](#)

File names

☐ NT15-03.dat

Related Information



GMT 2022 Jan

[Enlarge Image](#)

NT15-03

Ship Name: NATSUSHIMA

Period: 2015-01-29 - 2015-02-20

Chief Scientist: Blair Thornton (The University of Tokyo)

Update History

2022-01-28

An observation data was registered.

JAMSTEC

[Site Policy](#)
[Privacy Policy](#)

[Application for Data and Samples](#)
[Data Policy](#)

[What's New](#)
[Update History](#)
[Feeds](#)

Lists

[Publication List](#)
[Amount of Public Info.](#)

Data

[Map Search](#)
[Data Tree](#)
[Detailed Search](#)

Information of the Ships

[NATSUSHIMA](#)
[KAIYO](#)
[YOKOSUKA](#)
[MIRAI](#)
[KAIREI](#)
[CHIKYU](#)
[KAIMEI](#)
[SHINSEI MARU](#)
[HAKUHO MARU](#)

Information of the Submersibles

[KAIKO](#)
[SHINKAI 2000](#)
[SHINKAI 6500](#)
[DEEP TOW](#)
[HYPER-DOLPHIN](#)
[URASHIMA](#)
[YOKOSUKA DEEP TOW](#)
[6K Camera DEEP TOW](#)
[6K Sonar DEEP TOW](#)
[KM-ROV](#)
[POWER GRAB SAMPLER \(SHELL\)](#)
[POWER GRAB SAMPLER \(CLOW\)](#)
[BMS](#)

Go to a Cruise Information

Cruise ID:

Go to a Dive Information

Dive ID:

