

YOKOSUKA YK19-04S Shipboard Acoustic Doppler Current Profiler (ADCP)

Last Modified: 2019-10-19

[ReadMe](#) [Observation Data](#) [Data Format](#)

Cruise ID: [YK19-04S](#)

Shipboard Acoustic Doppler Current Profiler (ADCP): Processed (DMO)-Corrected

Data Policy: [JURCAOS-JAMSTEC](#)

Observation Items: Depth, Absolute velocity (zonal, meridional and vertical)

Science Keywords:

OCEANS > OCEAN CIRCULATION > OCEAN CURRENTS

Cruise Report

http://www.godac.jamstec.go.jp/catalog/data/doc_catalog/media/YK19-04S_all.pdf

For Using Data

Principal Investigator

Data Management Office

Use Constraints

See [Terms and Conditions](#) about constrain of use.

Data Citation

See [Terms and Conditions](#) about data citation.

Instrument

Instrument:

Shipboard acoustic doppler current profiler (ADCP)(YK12-01 -)



Overview

Acoustic Doppler Current Profiler (ADCP) transmits acoustic pulses from a transducer assembly. The transducers receive backscattered sounds from small particles floating with water currents. Using the Doppler shift principle, the backscattered sound data can be converted into components of water current velocity at multiple depths. The shipboard ADCP mounted on S/V YOKOSUKA can measure the speed and direction of water currents for up to 128 layers. The dataset provided here is a 5-minute time average of absolute velocity data (i.e., water current velocity in geophysical coordinates) after various kinds of corrections. This data processing was carried out by DMO. See [here](#) for detailed correction methods.

Specifications

| | |
|---------------------------|------------------------------------|
| Manufacturer: | Teledyne RD Instruments |
| System: | OS-ADCP 38kHz |
| Frequency: | 38.4kHz |
| Configuration: | 4-beam phased array |
| Beam angle: | 30deg |
| Transducer Depth: | 4.5m beneath calm water line |
| ADCP data logger: | Teledyne RD Instruments VmDas 1.49 |
| Ship heading and attitude | |
| [instrument maker/model]: | iXBlue/Octans |
| Navigation | |
| [instrument maker/model]: | Fugro/StarPack-D |

ADCP configuration

Bottom track mode

2019/04/08 02:04 - 2019/04/09 03:15

Water track mode

2019/04/09 03:16 - 2019/04/11 01:01

2019/04/11 08:26 - 2019/04/12 01:18

2019/04/12 09:28 - 2019/04/13 01:01

2019/04/13 08:28 - 2019/04/14 01:00

2019/04/14 08:33 - 2019/04/16 00:05

2019/04/16 18:51 - 2019/04/17 00:00

2019/04/17 07:54 - 2019/04/18 02:35

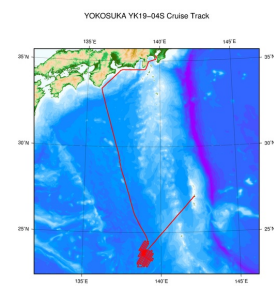
| | |
|-----------------------------------|--|
| Depth range: | 46 m - 1,222 m (bin centers) |
| Bin length: | 24 m |
| Number of bins: | 50 |
| Blanking interval: | 16 m |
| Sound speed calculation: | used transducer temperature during acquisition |
| Correction of the alignment error | |
| [corrected angle]: | -0.081 deg |

Need raw data?

If you would like the raw data set, please contact us from "Contact Us" above.

Related Information

 Cruise Data  Dive Data



© 2019 JAMSTEC

[Enlarge Image](#)

YK19-04S

Ship Name: YOKOSUKA

Period: 2019-04-08 - 2019-04-18

Chief Scientist: Yasuhiko Ohara (JCG)

Proposal New window into backarc basin lithospheric study: a Shinkai dive study at a Shikoku Basin
Title: oceanic core complex

Update History

| | |
|------------|------------------------------------|
| 2019-10-19 | An observation data was registerd. |
|------------|------------------------------------|

JAMSTEC

[Site Policy](#)

[Privacy Policy](#)

[Application for Data and Samples](#)

[Data Policy](#)

[Data Tree](#)

[What's New](#)

[Update History](#)

[Feeds](#)

Lists

[Publication List](#)

[Amount of Public Info.](#)

Data

[Map Search](#)

[Data Tree](#)

[Detailed Search](#)

Information of the Ships

[NATSUSHIMA](#)

[KAIYO](#)

[YOKOSUKA](#)

[MIRAI](#)

[KAIREI](#)

[CHIKYU](#)

[KAIMEI](#)

[SHINSEI MARU](#)

[HAKUHO MARU](#)

Information of the Submersibles

[KAIKO](#)

[SHINKAI 2000](#)

[SHINKAI 6500](#)

[DEEP TOW](#)

[HYPER-DOLPHIN](#)

[URASHIMA](#)

[YOKOSUKA DEEP TOW](#)

[6K Camera DEEP TOW](#)

[6K Sonar DEEP TOW](#)

[KM-ROV](#)

[POWER GRAB SAMPLER \(SHELL\)](#)

[POWER GRAB SAMPLER \(CLOW\)](#)

[BMS](#)

Go to a Cruise Information

Cruise ID:

Go to a Dive Information

Dive ID:

Copyright 2011 Japan Agency for Marine-Earth Science and Technology



JAMSTEC
JAPAN AGENCY FOR MARINE-EARTH SCIENCE AND TECHNOLOGY

国立研究開発法人
海洋研究開発機構

YOKOSUKA YK19-04S Shipboard Acoustic Doppler Current Profiler (ADCP)

Last Modified: 2019-10-19

[ReadMe](#) [Observation Data](#) [Data Format](#)

 Cruise ID: **YK19-04S**

Shipboard Acoustic Doppler Current Profiler (ADCP) Processed (DMO)-Corrected

 Data Policy: [JURCAOS-JAMSTEC](#)

ADCP Corrected,Qced 3

About data format

We provide the dataset as AWI Ocean Data View format (generic spreadsheet format).

 Ocean Data View : <http://odv.awi.de/>

 Japanese Guide : http://www.jodc.go.jp/jodc_pub/digitalpub_j.html

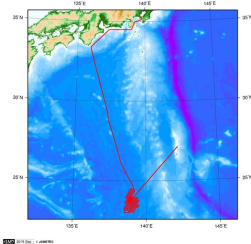
Format Description (tab space separated)

| Data No. | Content | Unit | Format | Remarks |
|----------|--|--------|--------|---|
| 1 | CruiseID | i6 | | Cruise name |
| 2 | Station | i12 | | Station name set to be measurement time [YYYYMMDDhhmm] |
| 3 | Type | i1 | | Always "B", due to the number of data acquisition layers lower than 250-layer |
| 4 | Day | i10 | | Measurement day(UTC) [MM/DD/YYYY] |
| 5 | Time | i5 | | Measurement time [Center of average time](UTC) [hh:mm] |
| 6 | Longitude | degree | f8.4 | Position at the measurement time [0 - 360] |
| 7 | Latitude | degree | f8.4 | Position at the measurement time [North: +, South: -] |
| 8 | Bottom depth | m | f6.1 | Set to be "0" if there is no data |
| 9 | Measurement depth | m | f7.2 | Depth of measurement layer |
| 10 | Quality flag | i1 | | "0"=good, "4"=questionable, "8"=bad |
| 11 | Current speed (zonal) | m/sec | f8.4 | 5-minute average of zonal component of absolute velocity [Eastward: +] [Only good data of more than 120 count of ping correlation and more than 25 count of echo intensity were used for the average] |
| 12 | Quality flag | i1 | | "0"=good, "4"=questionable, "8"=bad |
| 13 | Current speed (meridional) | m/sec | f8.4 | 5-minute average of meridional component of absolute velocity [Northward: +] [Only good data of more than 120 count of ping correlation and more than 25 count of echo intensity were used for the average] |
| 14 | Quality flag | i1 | | "0"=good, "4"=questionable, "8"=bad |
| 15 | Current speed (vertical) | m/sec | f8.4 | 5-minute average of vertical component of absolute velocity [Upward: +] [Only good data of more than 120 count of ping correlation and more than 25 count of echo intensity were used for the average] |
| 16 | Quality flag | i1 | | "0"=good, "4"=questionable, "8"=bad |
| 17 | Speed of absolute velocity | m/sec | f7.4 | Magnitude of absolute velocity |
| 18 | Quality flag | i1 | | "0"=good, "4"=questionable, "8"=bad |
| 19 | Current direction | degree | f5.1 | Current direction of absolute velocity [0 to 360] |
| 20 | Quality flag | i1 | | "0"=good, "4"=questionable, "8"=bad |
| 21 | Error velocity | m/sec | f8.4 | 5-minute average of error velocity |
| 22 | Quality flag | i1 | | "0"=good, "4"=questionable, "8"=bad |
| 23 | Correlation | count | f5.1 | 5-minute average by 4-beam average correlation(send beam - received beam) [max:250count] [The data used to calculate velocity were used to average] |
| 24 | Quality flag | i1 | | "0"=good, "4"=questionable, "8"=bad |
| 25 | Echo Intensity | count | f5.1 | 5-minute average by 4-beam average echo intensity [max:120count] [The data used to calculate velocity were used to average] |
| 26 | Quality flag | i1 | | "0"=good, "4"=questionable, "8"=bad |
| 27 | Percentgood | % | f5.1 | Rate of the good data that is used velocity calculation to the all data [0 to 100] |
| 28 | Quality flag | i1 | | "0"=good, "4"=questionable, "8"=bad |
| 29 | Ship's speed | m/sec | f7.4 | Ship's speed by GPS |
| 30 | Quality flag | i1 | | "0"=good, "4"=questionable, "8"=bad |
| *31 | Standard deviation of the Ship's Speed | m/sec | f5.2 | Standard deviation of the Ship's Speed in the 5-minute |
| 32 | Quality flag | i1 | | "0"=good, "4"=questionable, "8"=bad |
| *33 | Standard deviation of the Ship's Heading | degree | f6.2 | Standard deviation of the Ship's Heading in the 5-minute |
| 34 | Quality flag | i1 | | "0"=good, "4"=questionable, "8"=bad |
| *35 | Standard deviation of the Ship's Roll | degree | f5.2 | Standard deviation of the Ship's Roll in the 5-minute |
| 36 | Quality flag | i1 | | "0"=good, "4"=questionable, "8"=bad |
| *37 | Standard deviation of the ship's pitch | degree | f5.2 | Standard deviation of the ship's pitch in the 5-minute |
| 38 | Quality flag | i1 | | "0"=good, "4"=questionable, "8"=bad |

* Standard deviations of the ship's speed and the ship's heading, roll, and pitch in each 5-minute average section are also included in the dataset, since data quality of ADCP velocity might be dropped due to the high variabilities of each variables. However, DMO doesn't make any evaluation for the ADCP data by them.

[Cruise Data](#) [Dive Data](#)

YOKOSUKA YK19-04S Cruise Track



100°E 140°E 180°E
30°N 35°N 40°N
100°E 140°E 180°E

[Enlarge Image](#)

YK19-04S

Ship Name: YOKOSUKA

Period: 2019-04-08 ~ 2019-04-18

Chief Scientist: Yasuhiko Ohara (JCG)

Proposal Title: New window into backarc basin lithospheric study: a Shinkai dive study at a Shikoku Basin oceanic core complex

Update History

| | |
|------------|-------------------------------------|
| 2019-10-19 | An observation data was registered. |
|------------|-------------------------------------|

JAMSTEC

[Site Policy](#)
[Privacy Policy](#)
[Application for Data and Samples](#)
[Data Policy](#)
[What's New](#)
[Update History](#)
[Feeds](#)

Lists

[Publication List](#)
[Amount of Public Info.](#)

Data

[Map Search](#)
[Data Tree](#)
[Detailed Search](#)

Information of the Ships

[NATSUSHIMA](#)
[KAIYO](#)
[YOKOSUKA](#)
[MIRAI](#)
[KAIREI](#)
[CHIKYU](#)
[KAIMEI](#)
[SHINSEI MARU](#)
[HAKUHO MARU](#)

Information of the Submersibles

[KAIKO](#)
[SHINKAI 2000](#)
[SHINKAI 6500](#)
[DEEP TOW](#)
[HYPER-DOLPHIN](#)
[URASHIMA](#)
[YOKOSUKA DEEP TOW](#)
[6K Camera DEEP TOW](#)
[6K Sonar DEEP TOW](#)
[KM-ROV](#)
[POWER GRAB SAMPLER \(SHELL\)](#)
[POWER GRAB SAMPLER \(CLOW\)](#)
[BMS](#)

Go to a Cruise Information

Cruise ID:

Go to a Dive Information

Dive ID:

Copyright 2011 Japan Agency for Marine-Earth Science and Technology

 **JAMSTEC** 国立研究開発法人
海洋研究開発機構
JAPAN AGENCY FOR MARINE-EARTH SCIENCE AND TECHNOLOGY

YOKOSUKA YK19-04S Shipboard Acoustic Doppler Current Profiler (ADCP)

Last Modified: 2019-10-19

[ReadMe](#) [Observation Data](#) [Data Format](#)

Cruise ID: [YK19-04S](#)

Shipboard Acoustic Doppler Current Profiler (ADCP): Processed (DMO)-Corrected

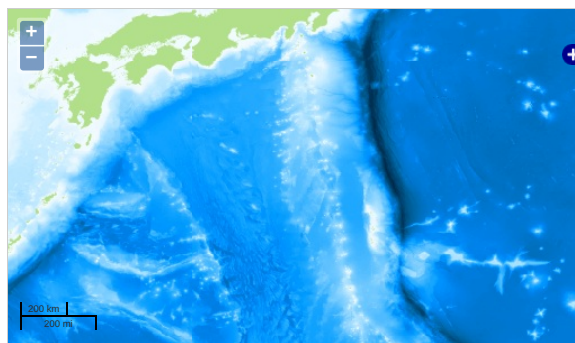
Data Policy: [JURCAOS-JAMSTEC](#)

Observation Items: Depth, Absolute velocity (zonal, meridional and vertical)

Science Keywords:

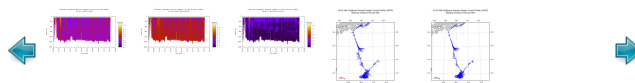
OCEANS > OCEAN CIRCULATION > OCEAN CURRENTS

Observation Map

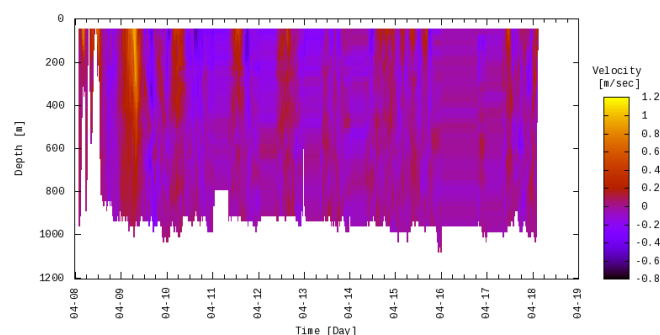


Imagery reproduced from ...

Figures



YK19-04S: Shipboard Acoustic Doppler Current Profiler (ADCP)
Current speed (zonal)



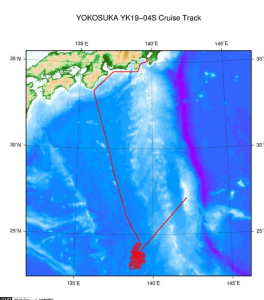
Data List

File names

☐ YK19-04S.txt

Related Information

☒ Cruise Data ☐ Dive Data



YK19-04S

Ship Name: YOKOSUKA

Period: 2019-04-08 - 2019-04-18

Chief Scientist: Yasuhiko Ohara (JCG)

Proposal New window into backarc basin lithospheric study: a Shinkai dive study at a Shikoku Basin

Title: oceanic core complex

 [Enlarge Image](#)

Update History

| | |
|------------|------------------------------------|
| 2019-10-19 | An observation data was registerd. |
|------------|------------------------------------|

JAMSTEC

[Site Policy](#)
[Privacy Policy](#)
[Application for Data and Samples](#)
[Data Policy](#)

What's New
[Update History](#)
[Feeds](#)

Lists

[Publication List](#)
[Amount of Public Info.](#)

Data
[Map Search](#)
[Data Tree](#)
[Detailed Search](#)

Information of the Ships

NATSUSHIMA
KAIYO
YOKOSUKA
MIRAI
KAIREI
CHIKYU
KAIMEI
SHINSEI MARU
HAKUHO MARU

Information of the Submersibles

KAIKO
SHINKAI 2000
SHINKAI 6500
DEEP TOW
HYPER-DOLPHIN
URASHIMA
YOKOSUKA DEEP TOW
6K Camera DEEP TOW
6K Sonar DEEP TOW
KM-ROV
POWER GRAB SAMPLER (SHELL)
POWER GRAB SAMPLER (CLOW)
BMS

Go to a Cruise Information

Cruise ID:

Go to a Dive Information

Dive ID:

Copyright 2011 Japan Agency for Marine-Earth Science and Technology



JAMSTEC
JAPAN AGENCY FOR MARINE-EARTH SCIENCE AND TECHNOLOGY

国立研究開発法人
海洋研究開発機構