

## MIRAI MR12-05 Leg3 Partial Pressure of CO2 (pCO2)

Last Modified: 2017-04-11

[ReadMe](#) [Observation Data](#) [Data Format](#)

Cruise ID: [MR12-05 Leg3](#)

Partial Pressure of CO2 (pCO2): Processed (PI)

Data Policy: [JAMSTEC](#)

Observation Items: CO2, Atmospheric pressure, Wind direction, Wind speed, Sea surface temperature, Sea surface salinity

Science Keywords:

OCEANS > OCEAN CHEMISTRY > CARBON DIOXIDE

Cruise Report

[http://www.godac.jamstec.go.jp/catalog/data/doc\\_catalog/media/MR12-05\\_leg1-3\\_all.pdf](http://www.godac.jamstec.go.jp/catalog/data/doc_catalog/media/MR12-05_leg1-3_all.pdf)

### For Using Data

#### Principal Investigator

Akihiko Murata (JAMSTEC)

#### Use Constraints

See [Terms and Conditions](#) about constrain of use.

#### Data Citation

See [Terms and Conditions](#) about data citation.

### Instrument

Instrument:

pCO2 measurement system (MR10-07

- )



### Overview

Please see the [Data book](#) for details of data.

Akihiko Murata

Global Chemical and Physical Oceanography Group

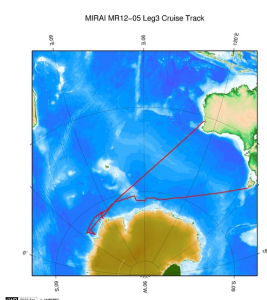
Research and Development (R&G) Center for Global Change (RCGC)

Japan Agency for Marine-Earth Science and Technology (JAMSTEC),

2-15, Natsushima, Yokosuka, Kanagawa, Japan 237-0061,

[murataa@jamstec.go.jp](mailto:murataa@jamstec.go.jp)

### Related Information



© 2013 JAMSTEC

[Enlarge Image](#)

#### MR12-05 Leg3

Ship Name: MIRAI

Period: 2013-01-05 - 2013-02-15

Chief Scientist: Hiroshi Uchida (JAMSTEC)

Proposal ▶ WOCE-revisit in the western Pacific and Southern oceans

Title:

### Update History

2017-04-11	An observation data was registerd.
2015-05-31	An observation data was registerd.

#### JAMSTEC

[Site Policy](#)  
[Privacy Policy](#)  
[Application for Data and Samples](#)  
[Data Policy](#)  
  
[What's New](#)  
[Update History](#)  
[Feeds](#)

#### Lists

[Publication List](#)  
[Amount of Public Info.](#)  
  
[Data](#)  
[Map Search](#)  
[Data Tree](#)  
[Detailed Search](#)

#### Information of the Ships

NATSUSHIMA  
KAIYO  
YOKOSUKA  
MIRAI  
KAIREI  
CHIKYU  
KAIMEI  
SHINSEI MARU  
HAKUHO MARU

#### Information of the Submersibles

KAIKO  
SHINKAI 2000  
SHINKAI 6500  
DEEP TOW  
HYPER-DOLPHIN  
URASHIMA  
YOKOSUKA DEEP TOW  
6K Camera DEEP TOW  
6K Sonar DEEP TOW  
KM-ROV  
POWER GRAB SAMPLER (SHELL)  
POWER GRAB SAMPLER (CLOW)  
BMS

#### Go to a Cruise Information

Cruise ID:

#### Go to a Dive Information

Dive ID:



## MIRAI MR12-05 Leg3 Partial Pressure of CO2 (pCO2)

Last Modified: 2017-04-11

[ReadMe](#) [Observation Data](#) [Data Format](#)

Cruise ID: [MR12-05 Leg3](#)

Partial Pressure of CO2 (pCO2) Processed (PI)

Data Policy: [JAMSTEC](#)

### pCO2 FORMAT\_J (MR11-08-)

#### Air-xCO<sub>2</sub>

The file is in fixed comma separated text file (csv) format.

The "missing value" is defined as -999.

Column NO.	Column Heading	Comments
1	Date (UTC)	Year, Month, Day
2	Time (UTC)	Hour, Minute, Second
3	Latitude (degree)	Positive in north
4	Longitude (degree)	Degree in eastward (0 - 360)
5	Sea surface temperature (°C)	
6	Sea surface salinity (PSU)	
7	Air pressure (hPa)	
8	Wind direction (degree)	
9	Wind speed (m/s)	
10	xCO2 in dry air (ppmv)	

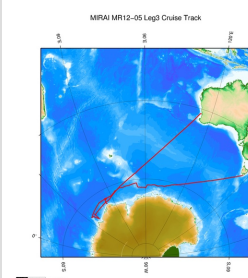
#### Sea-xCO<sub>2</sub>

The file is in fixed comma separated text file (csv) format.

The "missing value" is defined as -999.

Column NO.	Column Heading	Comments
1	Date (UTC)	Year, Month, Day
2	Time (UTC)	Hour, Minute, Second
3	Latitude (degree)	Positive in north
4	Longitude (degree)	Degree in eastward (0 - 360)
5	Sea surface temperature (°C)	
6	Sea surface salinity (PSU)	
7	Equilibrator temperature (°C)	
8	Equilibrator pressure (hPa)	
9	Air pressure (hPa)	
10	xCO2 in equilibrator (ppmv)	
11	pCO2 in equilibrator (µatm)	
12	pCO2 at SST (µatm)	
13	xCO2 in dry air (ppmv)	

### Related Information



[Enlarge Image](#)

#### MR12-05 Leg3

Ship Name: MIRAI

Period: 2013-01-05 - 2013-02-15

Chief Scientist: Hiroshi Uchida (JAMSTEC)

Proposal ▶ WOCE-revisit in the western Pacific and Southern oceans

Title:

### Update History

2017-04-11 An observation data was registered.  
2015-05-31 An observation data was registered.

JAMSTEC  
[Site Policy](#)  
[Privacy Policy](#)  
[Application for Data and Samples](#)  
[Data Policy](#)  
  
[What's New](#)  
[Update History](#)  
[Feeds](#)

**Lists**  
[Publication List](#)  
[Amount of Public Info.](#)  
  
**Data**  
[Map Search](#)  
[Data Tree](#)  
[Detailed Search](#)

**Information of the Ships**  
[NATSUSHIMA](#)  
[KAIYO](#)  
[YOKOSUKA](#)  
[MIRAI](#)  
[KAIREI](#)  
[CHIKYU](#)  
[KAIMEI](#)  
[SHINSEI MARU](#)  
[HAKUHO MARU](#)

**Information of the Submersibles**  
[KAICO](#)  
[SHINKAI 2000](#)  
[SHINKAI 6500](#)  
[DEEP TOW](#)  
[HYPER-DOLPHIN](#)  
[URASHIMA](#)  
[YOKOSUKA DEEP TOW](#)  
[6K Camera DEEP TOW](#)  
[6K Sonar DEEP TOW](#)  
[KM-ROV](#)  
[POWER GRAB](#)  
[SAMPLER \(SHELL\)](#)  
[POWER GRAB](#)  
[SAMPLER \(CLOW\)](#)  
[BMS](#)

#### Go to a Cruise Information

Cruise ID:

#### Go to a Dive Information

Dive ID:

## MIRAI MR12-05 Leg3 Partial Pressure of CO2 (pCO2)

Last Modified: 2017-04-11

[ReadMe](#) [Observation Data](#) [Data Format](#)

Cruise ID: [MR12-05 Leg3](#)

Partial Pressure of CO2 (pCO2): Processed (PI)

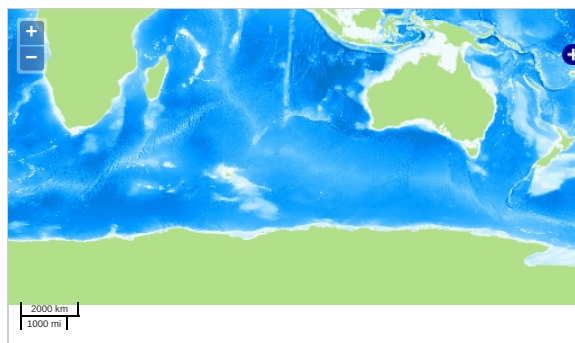
Data Policy: [JAMSTEC](#)

Observation Items: CO2, Atmospheric pressure, Wind direction, Wind speed, Sea surface temperature, Sea surface salinity

Science Keywords:

OCEANS > OCEAN CHEMISTRY > CARBON DIOXIDE

### Observation Map



... Observation Line ... Navigation ... Observation, Dive Point, Hole

Imagery reproduced from ...

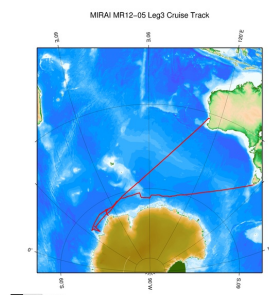
### Data List

☐ File names

☐ MR12-05\_air.csv

☐ MR12-05\_sea.csv

### Related Information



[Enlarge Image](#)

#### MR12-05 Leg3

Ship Name: MIRAI

Period: 2013-01-05 - 2013-02-15

Chief Scientist: Hiroshi Uchida (JAMSTEC)

Proposal ▶ WOCE-revisit in the western Pacific and Southern oceans

Title:

### Update History

2017-04-11	An observation data was registered.
2015-05-31	An observation data was registered.

#### JAMSTEC

[Site Policy](#)  
[Privacy Policy](#)  
[Application for Data and Samples](#)  
[Data Policy](#)  
  
[What's New](#)  
[Update History](#)  
[Feeds](#)

#### Lists

[Publication List](#)  
[Amount of Public Info.](#)  
  
[Data](#)  
[Map Search](#)  
[Data Tree](#)  
[Detailed Search](#)

#### Information of the Ships

[NATSUSHIMA](#)  
[KAIYO](#)  
[YOKOSUKA](#)  
[MIRAI](#)  
[KAIREI](#)  
[CHIKYU](#)  
[KAIMEI](#)  
[SHINSEI MARU](#)  
[HAKUHO MARU](#)

#### Information of the Submersibles

[KAIKO](#)  
[SHINKAI 2000](#)  
[SHINKAI 6500](#)  
[DEEP TOW](#)  
[HYPER-DOLPHIN](#)  
[URASHIMA](#)  
[YOKOSUKA DEEP TOW](#)  
[6K Camera DEEP TOW](#)  
[6K Sonar DEEP TOW](#)  
[KM-ROV](#)  
[POWER GRAB SAMPLER \(SHELL\)](#)  
[POWER GRAB SAMPLER \(CLOW\)](#)  
[BMS](#)

#### Go to a Cruise Information

Cruise ID:

#### Go to a Dive Information

Dive ID: