

## MIRAI MR08-06 Leg2 Shipboard Three Component Magnetometer (STCM)

Last Modified: 2019-06-22

[ReadMe](#) [Observation Data](#) [Data Format](#)

Cruise ID: [MR08-06 Leg2](#)

Shipboard Three Component Magnetometer (STCM): Processed (DMO)-Corrected

Data Policy: [JAMSTEC](#)

Observation Items: X, Y and Z component of geomagnetic field anomaly, Absolute value of geomagnetic field anomaly

Science Keywords:

OCEANS > MARINE GEOPHYSICS > MARINE MAGNETICS  
SOLID EARTH > GEOMAGNETISM

Cruise Report

[http://www.godac.jamstec.go.jp/catalog/data/doc\\_catalog/media/MR08-06\\_leg2-3\\_all.pdf](http://www.godac.jamstec.go.jp/catalog/data/doc_catalog/media/MR08-06_leg2-3_all.pdf)

### For Using Data

#### Principal Investigator

Data Management Office

#### Use Constraints

See [Terms and Conditions](#) about constrain of use.

#### Data Citation

See [Terms and Conditions](#) about data citation.

### Period (UTC)

2009-03-15 01:41 – 2009-03-30 13:10

### Instrument

Instrument:

Three component magnetometer



### Overview

The data provided is for corrected three component geomagnetic field anomalies. Three-axes flux-gate sensors with ring-cored coils were fixed on the roof of the bridge.

They measure the following items :

- h-component : along track line component, positive for the bow direction pitch.
- s-component : across track line component, positive for the starboard side roll.
- v-component : vertical component, positive for the downward direction.

The effect of ship motion was eliminated by roll and pitch data which was provided by a tilt sensor. The apparent magnetic influence can be detected through a "Figure of 8 turn"(a pair of clockwise and anti-clockwise turns) on each cruise. If no Figure of 8 turn on the cruise was completed, the latest Figure of 8 turn from the previous cruise was applied (see section 4.). As a quality control, data of low reliability was removed (see section 5. for quality control criteria).

Synthetic geomagnetic field values were calculated from IGRF models.

### Measurement System

#### (1) Magnetometer

Manufacturer : Tierra Technica Ltd.  
Type : SFG1214  
Measurement range :  $\pm 100,000$  nT  
Accuracy : less than 100 nT  
Resolution : 1 nT  
Location : Dry Laboratory

#### (2) Magnetic Sensor

Manufacturer : Tierra Technica Ltd.  
Form : flux-gate sensors with ring-cored coils  
Location : Foremast

#### (3) Attitude sensor and Gyro compass

Manufacturer : IXBLUE  
Type : PHINS  
Accuracy(Roll, Pitch) : 0.01 degree  
Accuracy(Gyro) : 0.01 degree \*Secant(Lat.)  
Location : In the doppler radar dome

### Duration of the Figure of 8 turn

In MR08-06\_leg1 cruise

Date (UTC)

2009/01/17 01:50:00 - 2009/01/17 02:22:00

2009/01/23 03:29:00 - 2009/01/23 03:49:00

2009/01/30 01:37:00 - 2009/01/30 01:56:00

2009/02/03 02:28:00 - 2009/02/03 02:47:00

2009/02/24 22:19:00 - 2009/02/24 22:42:00

2009/02/28 04:07:00 - 2009/02/28 04:57:00

**Data processing**

The following corrections and calculations were performed.

## (1) Ship magnetization correction

$$Hob = ARPYF + Hp \text{ ---(i)}$$

Hob: Observed magnetic field vector (Ship coordinates)

A: Effect of induced magnetization of the ship

R: Matrix of rotation due to the roll

P: Matrix of rotation due to the pitch

Y: Matrix of rotation due to the heading

F: Geomagnetic field vector

Hp: Ship's permanent magnetic moment

Following the equation(i), we calculate the geomagnetic field F.

$$RPYF = BHob + Hbp \text{ ---(ii)}$$

B: coefficient of Figure of 8 turn

Hbp: Permanent magnetic field vector of the ship

Reference: Isezaki,N., A new shipboard three-component magnetometer, GEOPHYSICS. VOL.51,NO10(1986);P1992-1998

## (2) International Geomagnetic Reference Field (IGRF)

Synthetic geomagnetic field values are calculated from IGRF 11th Generation models by using navigation data ; latitude, longitude and date.

Reference: IAGA Division V-MOD Geomagnetic Field Modeling[<http://www.ngdc.noaa.gov/IAGA/vmod/igrf.html>]

## (3) Calculation of the geomagnetic field anomaly

$$An = F - Figrf$$

An: Geomagnetic field anomaly vector

F: Geomagnetic field vector

Figrf: Synthetic geomagnetic field vector from IGRF

## (4) Quality control of data

Following criteria were used for removal of data of low reliability:

- Time error (inversion of time, continuation of same timestamps)
- Summation of the difference of heading by one second exceeding 20 degree per 5 minutes
- Ground speed of the ship below 3knot or exceeding 20knot
- X, Y, or Z component of geomagnetic field anomaly exceeding  $\pm 4000nT$

## (5) Filtering of the geomagnetic field anomaly

Due to the residual undulation of the ship, a 120 second length Gaussian filter was applied for each component of the geomagnetic field anomaly data.

## (6) Output of the data

Time (UTC)

Latitude (degree)

Longitude (degree)

X: Northward (positive on the north) component of geomagnetic field anomaly (nT)

Y: Eastward (positive on the east) component of geomagnetic field anomaly (nT)

Z: Vertical (positive for downward) component of geomagnetic field anomaly (nT)

T: Absolute value of geomagnetic field anomaly (nT)

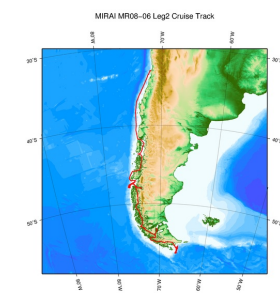
**Coefficient of the Figure of 8 turn and Permanent magnetic field vector of the ship**

This coefficient was calculated from the Figure of 8 turn (see above)

	0.9971	0.0310	0.0327		2133.7839
B=	-0.0342	1.0627	-0.0060	Hbp=	-159.2630
	0.0390	0.0051	0.9506		1376.0079

**Note**

- (1) File naming rule: Cruise ID\_corr.stcm
- (2) Sampling rate: 10 seconds
- (3) Geodetic system: WGS84
- (4) If you would like the raw data set, please contact us from "Contact Us" above.

**Related Information**

[Enlarge Image](#)

**MR08-06 Leg2**

Ship Name: MIRAI

Period: 2009-03-14 - 2009-03-30

Chief Scientist: Naomi Harada (JAMSTEC)

Project Name: [Paleoceanography Research, South Pacific Ocean Research Activity 2009]

**Update History**

2019-06-22	An observation data was registerd.
2018-04-18	An observation data was registerd.
2014-08-05	An observation data was registerd.
2012-10-25	An observation data was registerd.

#### JAMSTEC

[Site Policy](#)  
[Privacy Policy](#)  
[Application for Data and Samples](#)  
[Data Policy](#)

[What's New](#)  
[Update History](#)  
[Feeds](#)

#### Lists

[Publication List](#)  
[Amount of Public Info.](#)

#### Data

[Map Search](#)  
[Data Tree](#)  
[Detailed Search](#)

#### Information of the Ships

[NATSUSHIMA](#)  
[KAIYO](#)  
[YOKOSUKA](#)  
[MIRAI](#)  
[KAIREI](#)  
[CHIKYU](#)  
[KAIMEI](#)  
[SHINSEI MARU](#)  
[HAKUHO MARU](#)

#### Information of the Submersibles

[KAIKO](#)  
[SHINKAI 2000](#)  
[SHINKAI 6500](#)  
[DEEP TOW](#)  
[HYPER-DOLPHIN](#)  
[URASHIMA](#)  
[YOKOSUKA DEEP TOW](#)  
[6K Camera DEEP TOW](#)  
[6K Sonar DEEP TOW](#)  
[KM-ROV](#)  
[POWER GRAB SAMPLER \(SHELL\)](#)  
[POWER GRAB SAMPLER \(CLOW\)](#)  
[BMS](#)

#### Go to a Cruise Information

Cruise ID:

#### Go to a Dive Information

Dive ID:

Copyright 2011 Japan Agency for Marine-Earth Science and Technology



**JAMSTEC** 国立研究開発法人  
海洋研究開発機構  
JAPAN AGENCY FOR MARINE-EARTH SCIENCE AND TECHNOLOGY

## MIRAI MR08-06 Leg2 Shipboard Three Component Magnetometer (STCM)

Last Modified: 2019-06-22

[ReadMe](#) [Observation Data](#) [Data Format](#)

Cruise ID: [MR08-06 Leg2](#)

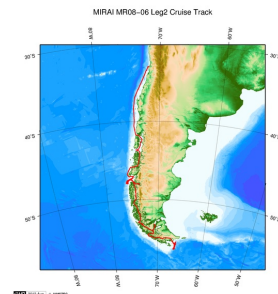
Shipboard Three Component Magnetometer (STCM): Processed (DMO)-Corrected

Data Policy: [JAMSTEC](#)

### STCM Corrected

No.	Column	Content	Format	Unit	Remarks
1	1 - 8	Date	i4,i2,i2		YYYYMMDD (UTC)
2	10 -15	Time	i2,i2,i2		hhmmss (UTC)
3	17 -25	Latitude	f9.5	degree	No sign for the northern hemisphere. Negative for the southern hemisphere.
4	27 -36	Longitude	f10.5	degree	No sign for eastern hemisphere. Negative for the western hemisphere.
5	38 -43	X component of geomagnetic field anomaly	f6.0	nT	Positive on the north
6	45 -50	Y component of geomagnetic field anomaly	f6.0	nT	Positive on the east
7	52 -57	Z component of geomagnetic field anomaly	f6.0	nT	Positive for downward
8	59 -64	Absolute value of geomagnetic field anomaly	f6.0	nT	

### Related Information



[Enlarge Image](#)

#### MR08-06 Leg2

Ship Name: MIRAI

Period: 2009-03-14 - 2009-03-30

Chief Scientist: Naomi Harada (JAMSTEC)

Project Name: [Paleoceanography Research, South Pacific Ocean Research Activity 2009]

### Update History

2019-06-22	An observation data was registerd.
2018-04-18	An observation data was registerd.
2014-08-05	An observation data was registerd.
2012-10-25	An observation data was registerd.

#### JAMSTEC

[Site Policy](#)  
[Privacy Policy](#)  
[Application for Data and Samples](#)  
[Data Policy](#)  
  
[What's New](#)  
[Update History](#)  
[Feeds](#)

#### Lists

[Publication List](#)  
[Amount of Public Info.](#)  
  
[Data](#)  
[Map Search](#)  
[Data Tree](#)  
[Detailed Search](#)

#### Information of the Ships

[NATSUSHIMA](#)  
[KAIYO](#)  
[YOKOSUKA](#)  
[MIRAI](#)  
[KAIREI](#)  
[CHIKYU](#)  
[KAIMEI](#)  
[SHINSEI MARU](#)  
[HAKUHO MARU](#)

#### Information of the Submersibles

[KAIKO](#)  
[SHINKAI 2000](#)  
[SHINKAI 6500](#)  
[DEEP TOW](#)  
[HYPER-DOLPHIN](#)  
[URASHIMA](#)  
[YOKOSUKA DEEP TOW](#)  
[6K Camera DEEP TOW](#)  
[6K Sonar DEEP TOW](#)  
[KM-ROV](#)  
[POWER GRAB SAMPLER \(SHELL\)](#)  
[POWER GRAB SAMPLER \(CLOW\)](#)  
[BMS](#)

#### Go to a Cruise Information

Cruise ID:

#### Go to a Dive Information

Dive ID:



## MIRAI MR08-06 Leg2 Shipboard Three Component Magnetometer (STCM)

Last Modified: 2019-06-22

[ReadMe](#) [Observation Data](#) [Data Format](#)

Cruise ID: **MR08-06 Leg2**

Shipboard Three Component Magnetometer (STCM): Processed (DMO)-Corrected

Data Policy: **JAMSTEC**

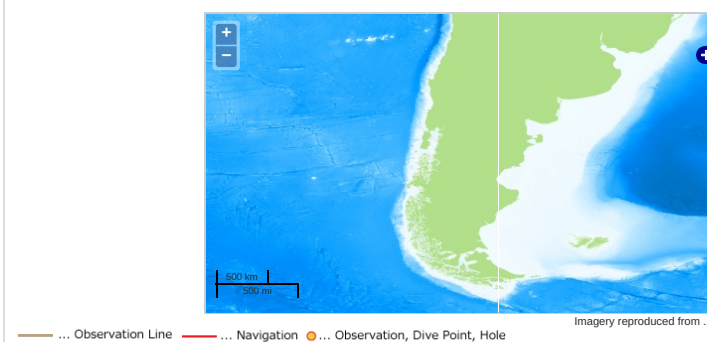
Observation Items: X, Y and Z component of geomagnetic field anomaly, Absolute value of geomagnetic field anomaly

Science Keywords:

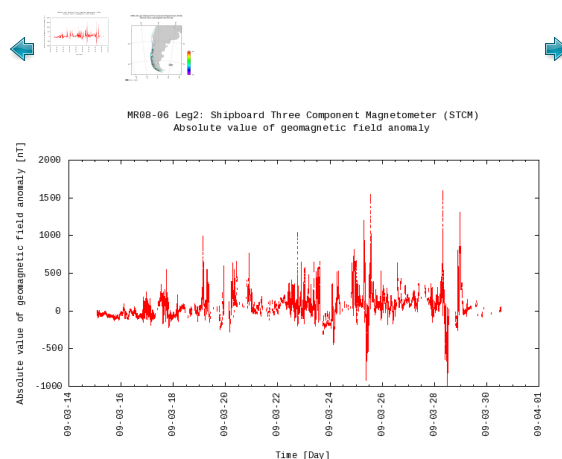
OCEANS > MARINE GEOPHYSICS > MARINE  
MAGNETICS

SOLID EARTH > GEOMAGNETISM

### Observation Map



### Figures



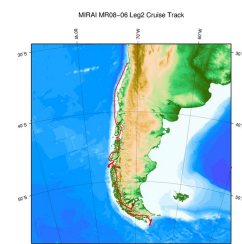
### Data List

[Add to Basket](#)

File names

☐ MR08-06\_leg2\_corr.stcm

### Related Information



[Enlarge Image](#)

#### MR08-06 Leg2

Ship Name: MIRAI

Period: 2009-03-14 - 2009-03-30

Chief Scientist: Naomi Harada (JAMSTEC)

Project Name: [Paleoceanography Research, South Pacific Ocean Research Activity 2009]

### Update History

2019-06-22	An observation data was registered.
2018-04-18	An observation data was registered.
2014-08-05	An observation data was registered.
2012-10-25	An observation data was registered.

JAMSTEC

[Site Policy](#)  
[Privacy Policy](#)

[Application for Data and Samples](#)  
[Data Policy](#)

[What's New](#)  
[Update History](#)  
[Feeds](#)

Lists

[Publication List](#)  
[Amount of Public Info.](#)

Data

[Map Search](#)  
[Data Tree](#)  
[Detailed Search](#)

Information of the Ships

[NATSUSHIMA](#)  
[KAIYO](#)  
[YOKOSUKA](#)  
[MIRAI](#)  
[KAIREI](#)  
[CHIKYU](#)  
[KAIMEI](#)  
[SHINSEI MARU](#)  
[HAKUHO MARU](#)

Information of the Submersibles

[KAIKO](#)  
[SHINKAI 2000](#)  
[SHINKAI 6500](#)  
[DEEP TOW](#)  
[HYPER-DOLPHIN](#)  
[URASHIMA](#)  
[YOKOSUKA DEEP TOW](#)  
[6K Camera DEEP TOW](#)  
[6K Sonar DEEP TOW](#)  
[KM-ROV](#)  
[POWER GRAB SAMPLER \(SHELL\)](#)  
[POWER GRAB SAMPLER \(CLOW\)](#)  
[BMS](#)

Go to a Cruise Information

Cruise ID:

Go to a Dive Information

Dive ID:

