

MIRAI MR98-K01 Doppler Radar

Last Modified: 2016-12-28

ReadMe

Cruise ID: [MR98-K01](#)

Doppler Radar: Raw

Data Policy: [JAMSTEC](#)

Observation Items: Reflectivity, Doppler velocity

Science Keywords:

ATMOSPHERE > PRECIPITATION
ATMOSPHERE > CLOUDS
ATMOSPHERE > ATMOSPHERIC WINDS
SPECTRAL/ENGINEERING > RADAR > DOPPLER VELOCITY
SPECTRAL/ENGINEERING > RADAR > RADAR REFLECTIVITY

Cruise Report

http://www.godac.jamstec.go.jp/catalog/data/doc_catalog/media/MR98-K01_all.pdf

For Using Data

Principal Investigator

Data Management Office

Use Constraints

See [Terms and Conditions](#) about constrain of use.

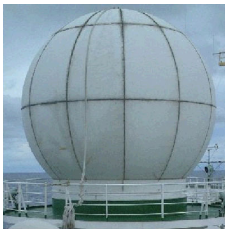
Data Citation

See [Terms and Conditions](#) about data citation.

Instrument

Instrument:

Doppler radar (- MR14-02)



Specifications

Manufacturer/model: Mitsubishi Electric Co. Ltd., Japan / RC-52B
Location (from sea surface): 18m
Frequency: 5290MHz (C band)
Peak power: 250kW
Beam angle: <1.5degree
Inertial navigation system
Manufacturer/model: Honeywell Inc., USA / DRUH
Processing system
Manufacturer/model: Vaisala Inc. Sigmet Product Line, USA / RVP-6
Data acquisition software
Manufacturer/model: Vaisala Inc. Sigmet Product Line, USA / IRIS ver. 6.07

Parameter

	Surveillance scan	Volume scan
Pulse width [μs]	2.0	0.5
Scan speed [deg/sec]	18	18
PRF *1 [Hz]	260	900 / 720 *2
Sweep integration	32 samples	32 samples
Ray spacing [deg]	about 1.0	about 1.0
Bin spacing [m]	250	125
Elevations [deg]	0.7	0.0, 0.6, 1.2, 1.8, 2.5, 3.2, 4.3, 5.3, 6.5, 8.0, 10.0, 12.5, 15.0, 18.0, 22.0, 26.0, 30.0
Range [km]	300	160
Scan interval	30 min	10 min

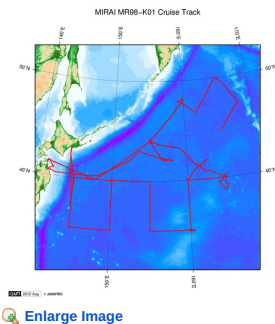
*1 Pulse Repetition Frequency

*2 During this cruise, the data were measured with the dual-PRF mode. Therefore, unfolding of Doppler velocity was applied automatically.

About this data

If you need the raw data set, please refer to "Contact Us" above.

Related Information



MR98-K01

Ship Name: MIRAI

Period: 1998-10-30 - 1998-12-15

Chief Scientist: Masashi Kusakabe (JAMSTEC)

Project Name: [Station KNOT]

Update History

2016-12-28

An observation data was registerd.

JAMSTEC

Site Policy

Privacy Policy

Application for Data and

Samples

Data Policy

What's New

Update History

Feeds

Lists

Publication List

Amount of Public Info.

Data

Map Search

Data Tree

Detailed Search

Information of the Ships

NATSUSHIMA

KAIYO

YOKOSUKA

MIRAI

KAIREI

CHIKYU

KAIMEI

SHINSEI MARU

HAKUHO MARU

Information of the Submersibles

KAIKO

SHINKAI 2000

SHINKAI 6500

DEEP TOW

HYPER-DOLPHIN

URASHIMA

YOKOSUKA DEEP TOW

6K Camera DEEP TOW

6K Sonar DEEP TOW

KM-ROV

POWER GRAB SAMPLER

(SHELL)

POWER GRAB SAMPLER

(CLOW)

BMS

Go to a Cruise Information

Cruise ID:

Go

Go to a Dive Information

Dive ID:

Go

Copyright 2011 Japan Agency for Marine-Earth Science and Technology



JAMSTEC

国立研究開発法人
海洋研究開発機構
JAPAN AGENCY FOR MARINE-EARTH SCIENCE AND TECHNOLOGY

MIRAI MR98-K01 Doppler Radar

Last Modified: 2016-12-28

ReadMe

Cruise ID: [MR98-K01](#)

Doppler Radar: Raw

Data Policy: [JAMSTEC](#)

Observation Items: Reflectivity, Doppler velocity

Science Keywords:

ATMOSPHERE > PRECIPITATION
ATMOSPHERE > CLOUDS
ATMOSPHERE > ATMOSPHERIC WINDS
SPECTRAL/ENGINEERING > RADAR > DOPPLER VELOCITY
SPECTRAL/ENGINEERING > RADAR > RADAR
SPECTRAL/ENGINEERING > RADAR REFLECTIVITY

Cruise Report

http://www.godac.jamstec.go.jp/catalog/data/doc_catalog/media/MR98-K01_all.pdf

For Using Data

Principal Investigator

Data Management Office

Use Constraints

See [Terms and Conditions](#) about constrain of use.

Data Citation

See [Terms and Conditions](#) about data citation.

Instrument

Instrument:

Doppler radar (- MR14-02)



Specifications

Manufacturer/model:	Mitsubishi Electric Co. Ltd., Japan / RC-52B
Location (from sea surface):	18m
Frequency:	5290MHz (C band)
Peak power:	250kW
Beam angle:	<1.5degree
Inertial navigation system	
Manufacturer/model:	Honeywell Inc., USA / DRUH
Processing system	
Manufacturer/model:	Vaisala Inc. Sigmet Product Line, USA / RVP-6
Data acquisition software	
Manufacturer/model:	Vaisala Inc. Sigmet Product Line, USA / IRIS ver. 6.07

Parameter

	Surveillance scan	Volume scan
Pulse width [μs]	2.0	0.5
Scan speed [deg/sec]	18	18
PRF *1 [Hz]	260	900 / 720*2
Sweep integration	32 samples	32 samples
Ray spacing [deg]	about 1.0	about 1.0
Bin spacing [m]	250	125
Elevations [deg]	0.7	0.0, 0.6, 1.2, 1.8, 2.5, 3.2, 4.3, 5.3, 6.5, 8.0, 10.0, 12.5, 15.0, 18.0, 22.0, 26.0, 30.0
Range [km]	300	160
Scan interval	30 min	10 min

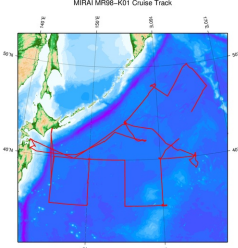
*1 Pulse Repetition Frequency

*2 During this cruise, the data were measured with the dual-PRF mode. Therefore, unfolding of Doppler velocity was applied automatically.


About this data

If you need the raw data set, please refer to "Contact Us" above.

Related Information



MIRAI MR98-K01 Cruise Track

 [Enlarge Image](#)

MR98-K01
Ship Name: MIRAI
Period: 1998-10-30 - 1998-12-15
Chief Scientist: Masashi Kusakabe (JAMSTEC)
Project Name: [Station KNOT]

Update History	
2016-12-28	An observation data was registerd.

JAMSTEC
Site Policy
Privacy Policy
Application for Data and Samples
Data Policy

What's New
Update History
Feeds

Lists
Publication List
Amount of Public Info.

Data
Map Search
Data Tree
Detailed Search

Information of the Ships
NATSUSHIMA
KAIYO
YOKOSUKA
MIRAI
KAIREI
CHIKYU
KAIMEI
SHINSEI MARU
HAKUHO MARU

Information of the Submersibles
KAIKO
SHINKAI 2000
SHINKAI 6500
DEEP TOW
HYPER-DOLPHIN
URASHIMA
YOKOSUKA DEEP TOW
6K Camera DEEP TOW
6K Sonar DEEP TOW
KM-ROV
POWER GRAB SAMPLER (SHELL)
POWER GRAB SAMPLER (CLOW)
BMS

Go to a Cruise Information
Cruise ID:

Go to a Dive Information
Dive ID:

Copyright 2011 Japan Agency for Marine-Earth Science and Technology



JAMSTEC 国立研究開発法人
海洋研究開発機構
JAPAN AGENCY FOR MARINE-EARTH SCIENCE AND TECHNOLOGY

MIRAI MR98-K01 Doppler Radar

Last Modified: 2016-12-28

ReadMe

Cruise ID: [MR98-K01](#)

Doppler Radar: Raw

Data Policy: [JAMSTEC](#)

Observation Items: Reflectivity, Doppler velocity

Science Keywords:

ATMOSPHERE > PRECIPITATION
ATMOSPHERE > CLOUDS
ATMOSPHERE > ATMOSPHERIC WINDS
SPECTRAL/ENGINEERING > RADAR > DOPPLER VELOCITY
SPECTRAL/ENGINEERING > RADAR > RADAR REFLECTIVITY

Cruise Report

http://www.godac.jamstec.go.jp/catalog/data/doc_catalog/media/MR98-K01_all.pdf

For Using Data

Principal Investigator

Data Management Office

Use Constraints

See [Terms and Conditions](#) about constrain of use.

Data Citation

See [Terms and Conditions](#) about data citation.

Instrument

Instrument:

Doppler radar (- MR14-02)



Specifications

Manufacturer/model: Mitsubishi Electric Co. Ltd., Japan / RC-52B
Location (from sea surface): 18m
Frequency: 5290MHz (C band)
Peak power: 250kW
Beam angle: <1.5degree
Inertial navigation system
Manufacturer/model: Honeywell Inc., USA / DRUH
Processing system
Manufacturer/model: Vaisala Inc. Sigmet Product Line, USA / RVP-6
Data acquisition software
Manufacturer/model: Vaisala Inc. Sigmet Product Line, USA / IRIS ver. 6.07

Parameter

	Surveillance scan	Volume scan
Pulse width [μs]	2.0	0.5
Scan speed [deg/sec]	18	18
PRF *1 [Hz]	260	900 / 720 *2
Sweep integration	32 samples	32 samples
Ray spacing [deg]	about 1.0	about 1.0
Bin spacing [m]	250	125
Elevations [deg]	0.7	0.0, 0.6, 1.2, 1.8, 2.5, 3.2, 4.3, 5.3, 6.5, 8.0, 10.0, 12.5, 15.0, 18.0, 22.0, 26.0, 30.0
Range [km]	300	160
Scan interval	30 min	10 min

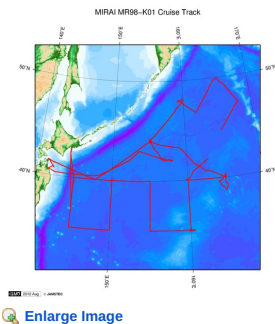
*1 Pulse Repetition Frequency

*2 During this cruise, the data were measured with the dual-PRF mode. Therefore, unfolding of Doppler velocity was applied automatically.

About this data

If you need the raw data set, please refer to "Contact Us" above.

Related Information



MR98-K01

Ship Name: MIRAI

Period: 1998-10-30 - 1998-12-15

Chief Scientist: Masashi Kusakabe (JAMSTEC)

Project Name: [Station KNOT]

Update History

2016-12-28

An observation data was registerd.

JAMSTEC

Site Policy

Privacy Policy

Application for Data and

Samples

Data Policy

What's New

Update History

Feeds

Lists

Publication List

Amount of Public Info.

Data

Map Search

Data Tree

Detailed Search

Information of the Ships

NATSUSHIMA

KAIYO

YOKOSUKA

MIRAI

KAIREI

CHIKYU

KAIMEI

SHINSEI MARU

HAKUHO MARU

Information of the Submersibles

KAIKO

SHINKAI 2000

SHINKAI 6500

DEEP TOW

HYPER-DOLPHIN

URASHIMA

YOKOSUKA DEEP TOW

6K Camera DEEP TOW

6K Sonar DEEP TOW

KM-ROV

POWER GRAB SAMPLER

(SHELL)

POWER GRAB SAMPLER

(CLOW)

BMS

Go to a Cruise Information

Cruise ID:

Go

Go to a Dive Information

Dive ID:

Go

Copyright 2011 Japan Agency for Marine-Earth Science and Technology



JAMSTEC

国立研究開発法人
海洋研究開発機構
JAPAN AGENCY FOR MARINE-EARTH SCIENCE AND TECHNOLOGY