

MIRAI MR00-K07 Leg2 Conductivity-Temperature-Depth Profiler (CTD)

Last Modified: 2017-06-22

[ReadMe](#) [Observation Data](#) [Data Format](#)

Cruise ID: [MR00-K07 Leg2](#)

Conductivity-Temperature-Depth Profiler (CTD): Processed (DMO)-QCed

Data Policy: [JAMSTEC](#)

Observation Items: Pressure, Temperature, Salinity, Dissolved oxygen

Science Keywords:

OCEANS > OCEAN CHEMISTRY > OXYGEN
OCEANS > OCEAN TEMPERATURE > WATER TEMPERATURE
OCEANS > SALINITY/DENSITY > SALINITY

Cruise Report

http://www.godac.jamstec.go.jp/catalog/data/doc_catalog/media/MR00-K07_leg1-2_all.pdf

[For Using Data](#)

Principal Investigator

Data Management Office

JAMSTEC / BPPT joint cruise in the Indonesian waters.

Use Constraints

See [Terms and Conditions](#) about constrain of use.

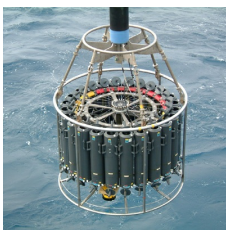
Data Citation

See [Terms and Conditions](#) about data citation.

Instrument

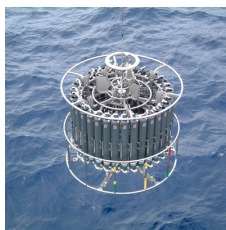
Instrument:

Water sampling system with CTD (30
litters * 24 bottles)



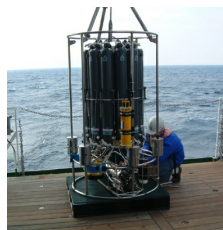
Instrument:

Water sampling system with CTD (12
litters * 36 bottles)



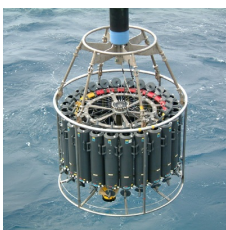
Instrument:

Water sampling system with CTD (12
litters * 12 bottles)



Instrument:

Conductivity temperature depth
measurements (CTD)



Overview

CTD(Conductivity-Temperature-Depth profiler) is used to observe the vertical profiles of temperature and conductivity.

Usually, this system is operated with multicylinder water sampler.

Observed signal is transmitted from sensor to the operation room on board using wire cable, and electric power is supplied from vessel to sensor.

Details of sensors attached to CTD system for MR00-K07 Leg1-2 cruise are presented in "System".

The following software, developed and supplied by the Sea-Bird Electronics, Inc., was used in MR00-K07 Leg1-2.

SEASAVE(ver 5.27b) for data acquisition

SEASOFT(ver 5.27b) for data processing

Data presented on this website is averaged over 1db.

System

• Pressure sensor

Model : SBE9plus, Sea-Bird Electronics, Inc.

Serial number : 79492

Measurement range : up to 10500m

Accuracy : 0.015% F.S.

Resolution : 0.001% F.S.

• Temperature sensor

Model : SBE3, Sea-Bird Electronics, Inc.

Serial number : 031359

Measurement range : -5.0 to +35degC

Accuracy : 0.001degC

Resolution : 0.0002degC

• Salinity sensor

Model : SBE4, Sea-Bird Electronics, Inc.

Serial number : 041088

Measurement range : 0.0 to 7 S/m
Accuracy : 0.0003 S/m
Resolution : 0.00004 S/m

• DO sensor

Model : SBE13, Sea-Bird Electronics, Inc.
Serial number : 130540
Measurement range : 0 to 15ml/l
Accuracy : 0.1ml/l
Resolution : 0.01ml/l

Sensors used in each cast is as follows.

Cast name	Serial number of sensor			
	Pressure	Temperature	Salinity	Dissolved Oxygen
C05S01	79492	031359	041088	130540
C06S01	79492	031359	041088	130540
C07S01	79492	031359	041088	130540
C08S01	79492	031359	041088	130540
C09S01	79492	031359	041088	130540
C10S01	79492	031359	041088	130540
C11S01	79492	031359	041088	130540
C12S01	79492	031359	041088	130540
C13S01	79492	031359	041088	130540
C14S01	79492	031359	041088	130540
C15S01	79492	031359	041088	130540
C16S01	79492	031359	041088	130540
C17S01	79492	031359	041088	130540
C18S01	79492	031359	041088	130540
C19S01	79492	031359	041088	130540
C20S01	79492	031359	041088	130540

Calibration Information

Calibration Information is as follows.

[Calibration Information](#)

Data processing

(1) Data processing sequence for SEASOFT is as follows;

command	function
datcnv	Convert raw data to engineering units, and store converted data in file.
alignctd	Align data relative to pressure(typically used for conductivity, temperature, and oxygen).
derive	Calculate salinity, density, etc..
section	Extract rows of data from file.
wildedit	Mark a data value with badflag to eliminate wild points.
binavg	Average data, basing bins on pressure, depth, scan number, or time range.
split	Split data in file into upcast and downcast files.

(2) Quality control

QCed data were added flag according to the NODC (National Oceanographic Data Center) quality control procedure.

- 1) The gradient check of adjacent depth data
- 2) The density inversion check
- 3) The broad range check set up at given ocean space and depth

Please see the site of NODC of the following link for quality control procedure in detail.

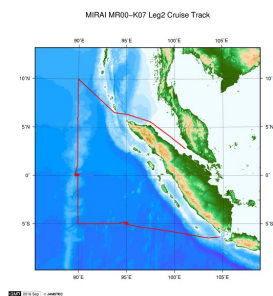
[QUALITY CONTROL AND PROCESSING OF HISTORICAL OCEANOGRAPHIC TEMPERATURE, SALINITY, AND OXYGEN DATA](#)

In addition, an abnormal value is identified by a visual check, and the data after visual QC is released.

Note

In this cruise, there is extra data (distance to bottom) in additional to temperature, salinity, dissolved oxygen that has been opened to the public. Please contact us from "Contact Us" above if necessary.

Related Information



[Enlarge Image](#)

MR00-K07 Leg2

Ship Name: MIRAI
Period: 2000-11-09 - 2000-11-20
Chief Scientist: Keisuke Mizuno (JAMSTEC)
Project Name: [Tropical Ocean Climate Study (TOCS)]

Update History

2017-06-22	An observation data was registered.
2016-10-11	An observation data was registered.

JAMSTEC
[Site Policy](#)
[Privacy Policy](#)
[Application for Data and](#)

[Lists](#)
[Publication List](#)
[Amount of Public Info.](#)

[Information of the Ships](#)
NATSUSHIMA
KAIYO
YOKOSUKA

[Information of the Submersibles](#)
KAIKO
SHINKAI 2000

[Go to a Cruise Information](#)

Cruise ID: [Go](#)

Samples
Data Policy

What's New
Update History
Feeds

Data
Map Search
Data Tree
Detailed Search

MIRAI
KAIREI
CHIKYU
KAIMEI
SHINSEI MARU
HAKUHO MARU

SHINKAI 6500
DEEP TOW
HYPER-DOLPHIN
URASHIMA
YOKOSUKA DEEP TOW
6K Camera DEEP TOW
6K Sonar DEEP TOW
KM-ROV
POWER GRAB SAMPLER
(SHELL)
POWER GRAB SAMPLER
(CLOW)
BMS

Go to a Dive Information

Dive ID:

Copyright 2011 Japan Agency for Marine-Earth Science and Technology



JAMSTEC 国立研究開発法人
海洋研究開発機構
JAPAN AGENCY FOR MARINE-EARTH SCIENCE AND TECHNOLOGY

MIRAI MR00-K07 Leg2 Conductivity-Temperature-Depth Profiler (CTD)

Last Modified: 2017-06-22

[ReadMe](#) [Observation Data](#) [Data Format](#)

 Cruise ID: [MR00-K07 Leg2](#)

Conductivity-Temperature-Depth Profiler (CTD): Processed (DMO)-QCed

 Data Policy: [JAMSTEC](#)

CTD DMO

Format Description for the Corrected Data

Provided in the Exchange Format of CCHDO (CLIVAR and Carbon Hydrographic Data Office). Please see the following link for details of Exchange Format.

[CCHDO | CLIVAR & Carbon Hydrographic Data Office](#)

Data in following cruise is not expressed with Exchange Format. Please see the site of each cruise for format.

MR02-K05 Leg1

MR04-05

Format Description for the QCed Data

Each data file contains one line header (meta data) followed by data lines for each cast.

The number of data lines are recorded in the header.

Header part

No.	Column	Content	Format	Remarks
1	1	Header ID	a1	fixed as '#'
2	3 - 6	Data ID	a4	CTD
3	8 - 22	Cruise ID	a15	MYYY-(K)XX(_legx)
4	24 - 31	Cast name	a8	
5	33 - 40	Date	i8	YYYYMMDD (UTC)
6	42 - 45	Time	i4	hhmm (UTC)
7	47 - 55	Latitude	i2,a1,f5.2,a1	dd-mm.mmN(S)
8	57 - 66	Longitude	i3,a1,f5.2,a1	ddd-mm.mmE(W)
9	68 - 71	Number of data lines	i4	
10	72 - 73	Terminator	-	CR+LF

Data part

No.	Column	Content	Unit	Format	Remarks
1	1 - 11	Pressure	dbar	f11.3	
2	12 - 22	Temperature	deg-C	f11.4	ITS-90
3	23 - 33	Salinity	PSU	f11.4	PSS-78
4	34 - 44	Dissolved oxygen	umol/kg	f11.3	
5	45 - 55	Flag	-	i11	1 - 7 : space 8 : flag of pressure 9 : flag of temperature 10 : flag of salinity 11 : flag of dissolved oxygen * reference : Definition of Quality Control Flags
6	56 - 57	Terminator	-	-	CR+LF

Each contents of the data part is stored in 11 bytes.

Missing value is presented by '-5', and error value is presented by '-9'.

Definition of Quality Control Flags

1. Depth Flags

- 0 - accepted value
- 1 - error in recorded depth (same or less than previous depth)
- 2 - density inversion

2. Observed Level Flags

- N - missing value
- 0 - accepted value
- 1 - range outlier (outside of broad range check)
- 2 - failed inversion check
- 3 - failed gradient check
- 4 - zero anomaly
- 5 - failed combined gradient and inversion checks
- 6 - failed range and inversion checks
- 7 - failed range and gradient checks
- 8 - failed range and zero anomaly checks
- 9 - failed range and combined gradient and inversion checks
- A - failed visual check

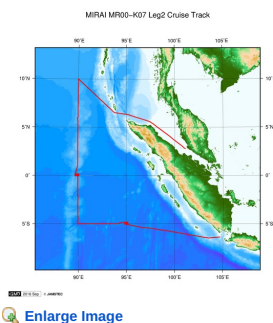
QCed data were added flag according to the NODC (National Oceanographic Data Center) quality control procedure, additionally visually checked. Please see the site of NODC of the following link for quality control procedure.

[QUALITY CONTROL AND PROCESSING OF HISTORICAL OCEANOGRAPHIC TEMPERATURE, SALINITY, AND OXYGEN DATA](#)

Sample Program

[ex_read2.f](#)

Related Information



MR00-K07 Leg2

Ship Name: MIRAI

Period: 2000-11-09 - 2000-11-20

Chief Scientist: Keisuke Mizuno (JAMSTEC)

Project Name: [Tropical Ocean Climate Study (TOCS)]

Update History

2017-06-22	An observation data was registerd.
2016-10-11	An observation data was registerd.

JAMSTEC

[Site Policy](#)
[Privacy Policy](#)
[Application for Data and Samples](#)
[Data Policy](#)

What's New
[Update History](#)
[Feeds](#)

Lists

[Publication List](#)
[Amount of Public Info.](#)

Data

[Map Search](#)
[Data Tree](#)
[Detailed Search](#)

Information of the Ships

NATSUSHIMA
KAIGO
YOKOSUKA
MIRAI
KAIREI
CHIKYU
KAIMEI
SHINSEI MARU
HAKUHO MARU

Information of the Submersibles

KAIKO
SHINKAI 2000
SHINKAI 6500
DEEP TOW
HYPER-DOLPHIN
URASHIMA
YOKOSUKA DEEP TOW
6K Camera DEEP TOW
6K Sonar DEEP TOW
KM-ROV
POWER GRAB SAMPLER (SHELL)
POWER GRAB SAMPLER (CLOW)
BMS

Go to a Cruise Information

Cruise ID:

Go to a Dive Information

Dive ID:

Copyright 2011 Japan Agency for Marine-Earth Science and Technology



JAMSTEC

国立研究開発法人
海洋研究開発機構
JAPAN AGENCY FOR MARINE EARTH SCIENCE AND TECHNOLOGY

MIRAI MR00-K07 Leg2 Conductivity-Temperature-Depth Profiler (CTD)

Last Modified: 2017-06-22

[ReadMe](#) [Observation Data](#) [Data Format](#)

Cruise ID: [MR00-K07 Leg2](#)

Conductivity-Temperature-Depth Profiler (CTD): Processed (DMO)-QCed

Data Policy: [JAMSTEC](#)

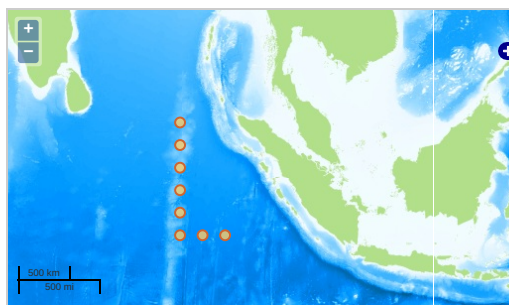
Observation Items: Pressure, Temperature, Salinity, Dissolved oxygen

Science Keywords:

OCEANS > OCEAN CHEMISTRY > OXYGEN
OCEANS > OCEAN > WATER
TEMPERATURE TEMPERATURE
OCEANS > SALINITY/DENSITY > SALINITY

Observation Map

1. Clicking the icon displays a balloon with observation information.
2. Then click the observation name, figures will be displayed.



— ... Observation Line — ... Navigation ● ... Observation, Dive Point, Hole

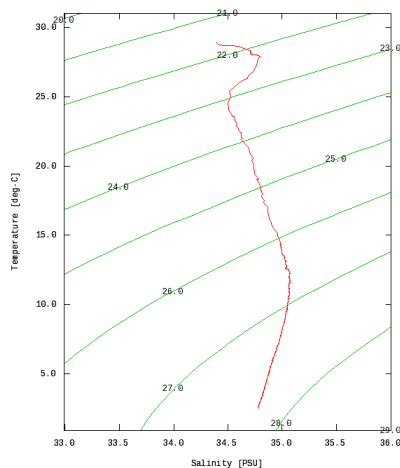
Imagery reproduced from ...

Figures

C05S01



MR00-K07 Leg2: C05S01
Conductivity-Temperature-Depth Profiler (CTD): Salinity



Only values evaluated as "good : all flags are 0" are plotted in profiles.
Please see Format Page for the definition of quality flags.

Data List

[Add to Basket](#)

☐ File names

<input type="checkbox"/> C05S01.dat
<input type="checkbox"/> C06S01.dat
<input type="checkbox"/> C07S01.dat
<input type="checkbox"/> C08S01.dat
<input type="checkbox"/> C09S01.dat
<input type="checkbox"/> C10S01.dat
<input type="checkbox"/> C11S01.dat
<input type="checkbox"/> C12S01.dat
<input type="checkbox"/> C13S01.dat
<input type="checkbox"/> C14S01.dat
<input type="checkbox"/> C15S01.dat
<input type="checkbox"/> C16S01.dat
<input type="checkbox"/> C17S01.dat

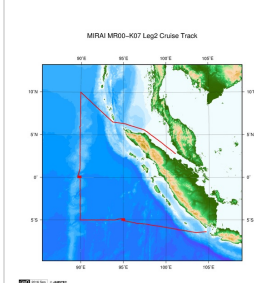
Files

- C19S01.dat
- C20S01.dat
- ex_read2.f (Sample Program)

- Observation List
The list of observation is shown as follows.

Observation	Time and Date	Lat. [°]	Lon. [°]
C05S01	2000-11-12 14:46	5.0103	90.0001
C06S01	2000-11-12 20:48	4.0026	89.9998
C07S01	2000-11-13 02:57	3.0101	90.0020
C08S01	2000-11-13 08:38	2.0148	90.0020
C09S01	2000-11-13 14:41	0.9990	89.9976
C10S01	2000-11-14 08:33	0.0010	89.9978
C11S01	2000-11-14 14:46	-0.9991	90.0023
C12S01	2000-11-14 20:46	-2.0001	90.0010
C13S01	2000-11-15 02:46	-2.9946	89.9990
C14S01	2000-11-15 08:43	-4.0001	89.9988
C15S01	2000-11-15 14:47	-4.9996	90.0000
C16S01	2000-11-15 20:45	-4.9966	91.0005
C17S01	2000-11-16 02:41	-4.9975	91.9991
C18S01	2000-11-16 08:43	-5.0020	92.9988
C19S01	2000-11-16 14:25	-4.9996	93.9973
C20S01	2000-11-17 05:50	-4.9995	95.0010

Related Information



[Enlarge Image](#)

MR00-K07 Leg2

Ship Name: MIRAI
Period: 2000-11-09 - 2000-11-20
Chief Scientist: Keisuke Mizuno (JAMSTEC)
Project Name: [Tropical Ocean Climate Study (TOCS)]

Update History

2017-06-22	An observation data was registered.
2016-10-11	An observation data was registered.

JAMSTEC

Site Policy
Privacy Policy
Application for Data and Samples
Data Policy
What's New
Update History
Feeds

Lists
Publication List
Amount of Public Info.

Data
Map Search
Data Tree
Detailed Search

Information of the Ships

NATSUSHIMA
KAIYO
YOKOSUKA
MIRAI
KAIREI
CHIKYU
KAIMEI
SHINSEI MARU
HAKUHO MARU

Information of the Submersibles

KAIKO
SHINKAI 2000
SHINKAI 6500
DEEP TOW
HYPER-DOLPHIN
URASHIMA
YOKOSUKA DEEP TOW
6K Camera DEEP TOW
6K Sonar DEEP TOW
KM-ROV
POWER GRAB SAMPLER (SHELL)
POWER GRAB SAMPLER (CLOW)
BMS

Go to a Cruise Information

Cruise ID:

Go to a Dive Information

Dive ID: