

MIRAI MR15-05 Leg1 Underway Thermosalinograph

Last Modified: 2018-05-31

ReadMe Observation Data Data Format

Cruise ID: [MR15-05 Leg1](#)

Underway Thermosalinograph: Processed (PI)

Data Policy: [JAMSTEC](#)

Observation Items: Temperature, Salinity, Dissolved oxygen, Fluorescence, Chlorophyll, Turbidity

Science Keywords:

OCEANS > OCEAN CHEMISTRY > OXYGEN
OCEANS > OCEAN CHEMISTRY > SALINITY
OCEANS > OCEAN CHEMISTRY > CHLOROPHYLL
OCEANS > SALINITY/DENSITY > SALINITY
OCEANS > OCEAN > SEA SURFACE
OCEANS TEMPERATURE TEMPERATURE
OCEANS > OCEAN OPTICS > FLUORESCENCE

Cruise Report

http://www.godac.jamstec.go.jp/catalog/data/doc_catalog/media/MR15-05_leg1_all.pdf

For Using Data

Principal Investigator

Hiroshi Uchida (JAMSTEC)
JAMSTEC / BPPT joint cruise in the Indonesian waters.

Use Constraints

See [Terms and Conditions](#) about constrain of use.

Data Citation

See [Terms and Conditions](#) about data citation.

Instrument

Instrument:

Continuous sea surface water monitoring system (MR14-03 -)



Data Citation

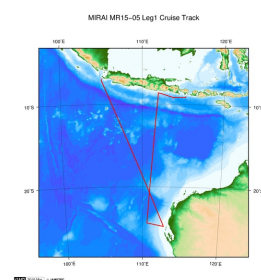
Please cite the Data book "[WHP I10 Revisit in 2015 Data Book](#)" (doi: 10.17596/0000002).

Overview

Sea surface water at 4.5 meters depth is continuously pumped up to the sea surface monitoring laboratory through a steel pipe and a vinyl-chloride pipe, controlling its flow rate, and then measured its temperature, salinity, and dissolved oxygen.

Please refer to the Data book "[WHP I10 Revisit in 2015 Data Book](#)" (doi: 10.17596/0000002) for details of data.

Related Information



[Enlarge Image](#)

MR15-05 Leg1

Ship Name: MIRAI
Period: 2015-12-23 - 2016-01-11
Chief Scientist: Katsuro Katsumata (JAMSTEC)
Project Name: [POST-WOCE Hydrography]
Proposal ▶ Research cruise on ocean decadal variability -- Indian Ocean GO-SHIP (Global Ocean Ship-based Hydrographic Investigation Program)

Update History

2018-05-31	An observation data was registered.
2018-03-23	An observation data was registered.
2017-08-03	An observation data was registered.
2017-08-02	An observation data was registered.
2017-06-29	An observation data was registered.
2017-05-24	An observation data was registered.
2016-07-11	An observation data was registered.

JAMSTEC
Site Policy
Privacy Policy
Application for Data and Samples
Data Policy
What's New
Update History
Feeds

Lists
Publication List
Amount of Public Info.
Data
Map Search
Data Tree
Detailed Search

Information of the Ships
NATSUSHIMA
KAIGO
YOKOSUKA
MIRAI
KAIREI
CHIKYU
KAIMEI
SHINSEI MARU
HAKUHO MARU

Information of the Submersibles
KAIGO
SHINKAI 2000
SHINKAI 6500
DEEP TOW
HYPER-DOLPHIN
URASHIMA
YOKOSUKA DEEP TOW
6K Camera DEEP TOW
6K Sonar DEEP TOW
KM-ROV
POWER GRAB
SAMPLER (SHELL)

Go to a Cruise Information

Cruise ID: Go

Go to a Dive Information

Dive ID: Go



MIRAI MR15-05 Leg1 Underway Thermosalinograph

Last Modified: 2018-05-31

ReadMe Observation Data **Data Format**

Cruise ID: [MR15-05 Leg1](#)

Underway Thermosalinograph: Processed (PI)

Data Policy: [JAMSTEC](#)

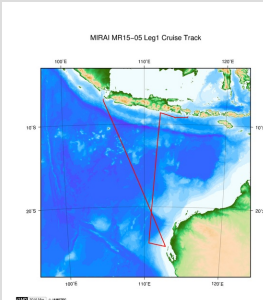
DATA Format

Column No.	Column Heading Mnemonic	Units Mnemonic	Reporting Precision	FORTTRAN Format	Comments
1	EXPCODE		A12		Expedition code
2	DATE		I8		Date (YYYYMMDD)
3	TIME	UTC	I4		Time (HHMM)
4	LATITUDE	DEG	F10.5		Latitude
5	LONGITUDE	DEG	F10.5		Longitude
6	SPEED	KNOT	F6.1		Ship speed
7	FLOW	L/MIN	F6.1		Flow rate
8	INTAKE-TEMPERATURE	ITS-90	F9.4		Temperature of bottom of the ship (SBE 38)
9	INTAKE-TEMPERATURE_FLAG		I1		see flag definition below
10	TSG-TEMPERATURE	ITS-90	F9.4		Thermosalinograph temperature (SBE 45)
11	TSG-TEMPERATURE_FLAG		I1		see flag definition below
12	TSG-SALINITY	PSS-78	F9.4		Thermosalinograph salinity (SBE 45)
13	TSG-SALINITY_FLAG		I1		see flag definition below
14	SALINITY	PSS-78	F9.4		Sampled salinity
15	SALINITY_FLAG		I1		see flag definition below
16	TSG-OXYGEN	UMOL/KG	F9.2		Oxygen sensor
17	TSG-OXYGEN_FLAG		I1		see flag definition below
18	OXYGEN	UMOL/KG	F9.2		Sampled oxygen
19	OXYGEN_FLAG		I1		see flag definition below
20	FLUORESCENCE	RFU	F9.2		Fluorometer C3
21	FLUORESCENCE_FLAG		I1		see flag definition below
22	TSG-CHLOROPHYLL-A	MG/CUM	F9.3		Chlorophyll-a estimated from the fluorometer
23	TSG-CHLOROPHYLL-A_FLAG		I1		see flag definition below
24	CHLOROPHYLL-A	MG/CUM	F9.2		Sampled chlorophyll-a
25	CHLOROPHYLL-A_FLAG		I1		see flag definition below
26	TURBIDITY	NTU	F9.2		Turbidity
27	TURBIDITY_FLAG		I1		see flag definition below

Flag definition

- 1: not calibrated (post-cruise calibration)
- 2: acceptable measurement
- 3: questionable measurement
- 4: bad measurement
- 5: not reported
- 6: interpolated
- 7: despiked
- 8: low-pass filtered
- 9: not sampled (missing value is -999)

Related Information



[Enlarge Image](#)

MR15-05 Leg1

Ship Name: MIRAI

Period: 2015-12-23 - 2016-01-11

Chief Scientist: Katsuro Katsumata (JAMSTEC)

Project Name: [POST-WOCE Hydrography]

Proposal ▶ Research cruise on ocean decadal variability -- Indian Ocean GO-SHIP (Global Ocean Ship-based Hydrographic Investigation Program)

Update History

2018-05-31	An observation data was registered.
2018-03-23	An observation data was registered.
2017-08-03	An observation data was registered.
2017-08-02	An observation data was registered.
2017-06-29	An observation data was registered.
2017-05-24	An observation data was registered.
2016-07-11	An observation data was registered.

[Update History](#)
[Feeds](#)

[Detailed Search](#)

[CHIKYU](#)
[KAIMEI](#)
[SHINSEI MARU](#)
[HAKUHO MARU](#)

[URASHIMA](#)
[YOKOSUKA DEEP TOW](#)
[6K Camera DEEP TOW](#)
[6K Sonar DEEP TOW](#)
[KM-ROV](#)
[POWER GRAB](#)
[SAMPLER \(SHELL\)](#)
[POWER GRAB](#)
[SAMPLER \(CLOW\)](#)
[BMS](#)

Dive ID:

Copyright 2011 Japan Agency for Marine-Earth Science and Technology



JAMSTEC 国立研究開発法人
海洋研究開発機構
JAPAN AGENCY FOR MARINE-EARTH SCIENCE AND TECHNOLOGY

MIRAI MR15-05 Leg1 Underway Thermosalinograph

Last Modified: 2018-05-31

[ReadMe](#) [Observation Data](#) [Data Format](#)

Cruise ID: [MR15-05 Leg1](#)

Underway Thermosalinograph: Processed (PI)

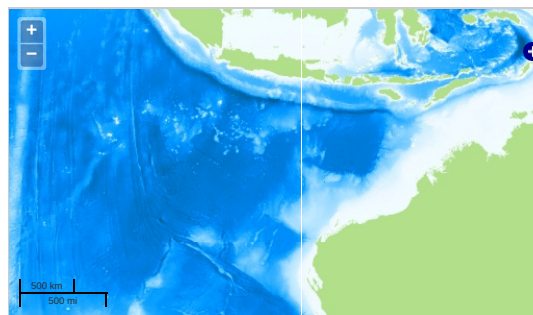
Data Policy: [JAMSTEC](#)

Observation Items: Temperature, Salinity, Dissolved oxygen, Fluorescence, Chlorophyll, Turbidity

Science Keywords:

OCEANS > OCEAN CHEMISTRY > OXYGEN
OCEANS > OCEAN CHEMISTRY > SALINITY
OCEANS > OCEAN CHEMISTRY > CHLOROPHYLL
OCEANS > SALINITY/DENSITY > SALINITY
OCEANS > OCEAN > SEA SURFACE
OCEANS TEMPERATURE TEMPERATURE
OCEANS > OCEAN OPTICS > FLUORESCENCE

Observation Map



Imagery reproduced from ...

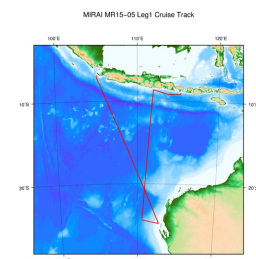
... Observation Line ... Navigation ... Observation, Dive Point, Hole

Data List

File names

☐ 49NZ20151223_tsg.csv

Related Information



[Enlarge Image](#)

MR15-05 Leg1

Ship Name: MIRAI

Period: 2015-12-23 - 2016-01-11

Chief Scientist: Katsuro Katsumata (JAMSTEC)

Project Name: [POST-WOCE Hydrography]

Proposal ▶ Research cruise on ocean decadal variability -- Indian Ocean GO-SHIP (Global Ocean Ship-based Hydrographic Investigation Program)

Update History

2018-05-31	An observation data was registered.
2018-03-23	An observation data was registered.
2017-08-03	An observation data was registered.
2017-08-02	An observation data was registered.
2017-06-29	An observation data was registered.
2017-05-24	An observation data was registered.
2016-07-11	An observation data was registered.

JAMSTEC

[Site Policy](#)

[Privacy Policy](#)

[Application for Data and Samples](#)

[Data Policy](#)

[What's New](#)

[Update History](#)

[Feeds](#)

Lists

[Publication List](#)

[Amount of Public Info.](#)

Data

[Map Search](#)

[Data Tree](#)

[Detailed Search](#)

Information of the Ships

[NATSUSHIMA](#)

[KAISO](#)

[YOKOSUKA](#)

[MIRAI](#)

[KAIREI](#)

[CHIKYU](#)

[KAIMEI](#)

[SHINSEI MARU](#)

[HAKUHO MARU](#)

Information of the Submersibles

[KAISO](#)

[SHINKAI 2000](#)

[SHINKAI 6500](#)

[DEEP TOW](#)

[HYPER-DOLPHIN](#)

[URASHIMA](#)

[YOKOSUKA DEEP TOW](#)

[6K Camera DEEP TOW](#)

[6K Sonar DEEP TOW](#)

[KM-ROV](#)

[POWER GRAB](#)

[SAMPLER \(SHELL\)](#)

[POWER GRAB](#)

[SAMPLER \(CLOW\)](#)

[BMS](#)

Go to a Cruise Information

Cruise ID:

Go to a Dive Information

Dive ID: