

MIRAI MR00-K06 Doppler Radar

Last Modified: 2016-11-23

ReadMe

Cruise ID: [MR00-K06](#)

Doppler Radar: Raw

Data Policy: [JAMSTEC](#)

Observation Items: Reflectivity, Doppler velocity

Science Keywords:

ATMOSPHERE > PRECIPITATION
ATMOSPHERE > CLOUDS
ATMOSPHERE > ATMOSPHERIC WINDS
SPECTRAL/ENGINEERING > RADAR > DOPPLER VELOCITY
SPECTRAL/ENGINEERING > RADAR > RADAR REFLECTIVITY

For Using Data

Principal Investigator

Data Management Office

Use Constraints

See [Terms and Conditions](#) about constrain of use.

Data Citation

See [Terms and Conditions](#) about data citation.

Instrument

Instrument:

Doppler radar (- MR14-02)



Specifications

Manufacturer/model: Mitsubishi Electric Co. Ltd., Japan / RC-52B
Location (from sea surface): 18m
Frequency: 5290MHz (C band)
Peak power: 250kW
Beam angle: <1.5degree
Inertial navigation system
Manufacturer/model: Honeywell Inc., USA / DRUH
Processing system
Manufacturer/model: Vaisala Inc. Sigmet Product Line, USA / RVP-6
Data acquisition software
Manufacturer/model: Vaisala Inc. Sigmet Product Line, USA / IRIS ver. 6.07

Parameter

	Surveillance scan	Volume scan
Pulse width [μ s]	2.0	0.5
Scan speed [deg/sec]	18	18
PRF *1 [Hz]	260	900 / 720 *2
Sweep integration	32 samples	32 samples
Ray spacing [deg]	about 1.0	about 1.0
Bin spacing [m]	250	125
Elevations [deg]	0.7	0.7, 1.4, 2.1, 2.9, 3.8, 4.8, 5.9, 7.0, 8.1, 9.3, 10.6, 12.1, 14.0, 16.0, 19.5, 23.5
Range [km]	300	160
Scan interval	30 min	10 min

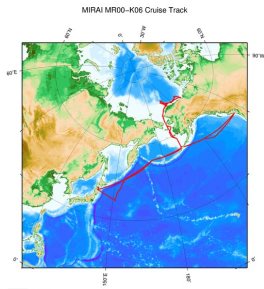
*1 Pulse Repetition Frequency

*2 During this cruise, the data were measured with the dual-PRF mode. Therefore, unfolding of Doppler velocity was applied automatically.

About this data

If you need the raw data set, please refer to "Contact Us" above.

Related Information



 [Enlarge Image](#)

MR00-K06

Ship Name: MIRAI

Period: 2000-08-03 - 2000-10-13

Chief Scientist: Takatoshi Takizawa (JAMSTEC)

Project Name: [Arctic Ocean Climate System Research]

Update History

Date	Description
2016-11-23	An observation data was registered.

JAMSTEC

[Site Policy](#)

[Privacy Policy](#)

[Application for Data and Samples](#)

[Data Policy](#)

What's New

[Update History](#)

[Feeds](#)

Lists

[Publication List](#)

[Amount of Public Info.](#)

Data

[Map Search](#)

[Data Tree](#)

[Detailed Search](#)

Information of the Ships

[NATSUSHIMA](#)

[KAIYO](#)

[YOKOSUKA](#)

[MIRAI](#)

[KAIREI](#)

[CHIKYU](#)

[KAIMEI](#)

[SHINSEI MARU](#)

[HAKUHO MARU](#)

Information of the Submersibles

[KAIKO](#)

[SHINKAI 2000](#)

[SHINKAI 6500](#)

[DEEP TOW](#)

[HYPER-DOLPHIN](#)

[URASHIMA](#)

[YOKOSUKA DEEP TOW](#)

[6K Camera DEEP TOW](#)

[6K Sonar DEEP TOW](#)

[KM-ROV](#)

[POWER GRAB SAMPLER](#)

[\(SHELL\)](#)

[POWER GRAB SAMPLER](#)

[\(CLOW\)](#)

[BMS](#)

Go to a Cruise Information

Cruise ID:

Go to a Dive Information

Dive ID:

Copyright 2011 Japan Agency for Marine-Earth Science and Technology



JAMSTEC 国立研究開発法人
海洋研究開発機構
JAPAN AGENCY FOR MARINE-EARTH SCIENCE AND TECHNOLOGY

MIRAI MR00-K06 Doppler Radar

Last Modified: 2016-11-23

ReadMe

Cruise ID: [MR00-K06](#)

Doppler Radar: Raw

Data Policy: [JAMSTEC](#)

Observation Items: Reflectivity, Doppler velocity

Science Keywords:

ATMOSPHERE > PRECIPITATION
ATMOSPHERE > CLOUDS
ATMOSPHERE > ATMOSPHERIC WINDS
SPECTRAL/ENGINEERING > RADAR > DOPPLER VELOCITY
SPECTRAL/ENGINEERING > RADAR > RADAR
SPECTRAL/ENGINEERING > RADAR REFLECTIVITY

For Using Data

Principal Investigator

Data Management Office

Use Constraints

See [Terms and Conditions](#) about constrain of use.

Data Citation

See [Terms and Conditions](#) about data citation.

Instrument

Instrument:

Doppler radar (- MR14-02)



Specifications

Manufacturer/model: Mitsubishi Electric Co. Ltd., Japan / RC-52B
Location (from sea surface): 18m
Frequency: 5290MHz (C band)
Peak power: 250kW
Beam angle: <1.5degree
Inertial navigation system
Manufacturer/model: Honeywell Inc., USA / DRUH
Processing system
Manufacturer/model: Vaisala Inc. Sigmet Product Line, USA / RVP-6
Data acquisition software
Manufacturer/model: Vaisala Inc. Sigmet Product Line, USA / IRIS ver. 6.07

Parameter

	Surveillance scan	Volume scan
Pulse width [μ s]	2.0	0.5
Scan speed [deg/sec]	18	18
PRF *1 [Hz]	260	900 / 720*2
Sweep integration	32 samples	32 samples
Ray spacing [deg]	about 1.0	about 1.0
Bin spacing [m]	250	125
Elevations [deg]	0.7	0.7, 1.4, 2.1, 2.9, 3.8, 4.8, 5.9, 7.0, 8.1, 9.3, 10.6, 12.1, 14.0, 16.0, 19.5, 23.5
Range [km]	300	160
Scan interval	30 min	10 min

*1 Pulse Repetition Frequency

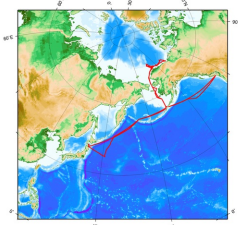
*2 During this cruise, the data were measured with the dual-PRF mode. Therefore, unfolding of Doppler velocity was applied automatically.

About this data

If you need the raw data set, please refer to "Contact Us" above.

Related Information

MIRAI MR00-K06 Cruise Track



Enlarge Image

MR00-K06
Ship Name: MIRAI
Period: 2000-08-03 - 2000-10-13
Chief Scientist: Takatoshi Takizawa (JAMSTEC)
Project Name: [Arctic Ocean Climate System Reaserch]

Update History	
2016-11-23	An observation data was registerd.

JAMSTEC
Site Policy
Privacy Policy
Application for Data and Samples
Data Policy

What's New
Update History
Feeds

Lists
Publication List
Amount of Public Info.

Data
Map Search
Data Tree
Detailed Search

Information of the Ships
NATSUSHIMA
KAIYO
YOKOSUKA
MIRAI
KAIREI
CHIKYU
KAIMEI
SHINSEI MARU
HAKUHO MARU

Information of the Submersibles
KAIKO
SHINKAI 2000
SHINKAI 6500
DEEP TOW
HYPER-DOLPHIN
URASHIMA
YOKOSUKA DEEP TOW
6K Camera DEEP TOW
6K Sonar DEEP TOW
KM-ROV
POWER GRAB
SAMPLER (SHELL)
POWER GRAB
SAMPLER (CLOW)
BMS

Go to a Cruise Information
Cruise ID:

Go to a Dive Information
Dive ID:

Copyright 2011 Japan Agency for Marine-Earth Science and Technology



JAMSTEC
JAPAN AGENCY FOR MARINE-EARTH SCIENCE AND TECHNOLOGY

国立研究開発法人
海洋研究開発機構

MIRAI MR00-K06 Doppler Radar

Last Modified: 2016-11-23

ReadMe

Cruise ID: [MR00-K06](#)

Doppler Radar: Raw

Data Policy: [JAMSTEC](#)

Observation Items: Reflectivity, Doppler velocity

Science Keywords:

ATMOSPHERE > PRECIPITATION
ATMOSPHERE > CLOUDS
ATMOSPHERE > ATMOSPHERIC WINDS
SPECTRAL/ENGINEERING > RADAR > DOPPLER VELOCITY
SPECTRAL/ENGINEERING > RADAR > RADAR REFLECTIVITY

For Using Data

Principal Investigator

Data Management Office

Use Constraints

See [Terms and Conditions](#) about constrain of use.

Data Citation

See [Terms and Conditions](#) about data citation.

Instrument

Instrument:

Doppler radar (- MR14-02)



Specifications

Manufacturer/model: Mitsubishi Electric Co. Ltd., Japan / RC-52B
Location (from sea surface): 18m
Frequency: 5290MHz (C band)
Peak power: 250kW
Beam angle: <1.5degree
Inertial navigation system
Manufacturer/model: Honeywell Inc., USA / DRUH
Processing system
Manufacturer/model: Vaisala Inc. Sigmet Product Line, USA / RVP-6
Data acquisition software
Manufacturer/model: Vaisala Inc. Sigmet Product Line, USA / IRIS ver. 6.07

Parameter

	Surveillance scan	Volume scan
Pulse width [μ s]	2.0	0.5
Scan speed [deg/sec]	18	18
PRF *1 [Hz]	260	900 / 720 *2
Sweep integration	32 samples	32 samples
Ray spacing [deg]	about 1.0	about 1.0
Bin spacing [m]	250	125
Elevations [deg]	0.7	0.7, 1.4, 2.1, 2.9, 3.8, 4.8, 5.9, 7.0, 8.1, 9.3, 10.6, 12.1, 14.0, 16.0, 19.5, 23.5
Range [km]	300	160
Scan interval	30 min	10 min

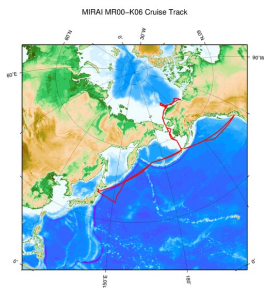
*1 Pulse Repetition Frequency

*2 During this cruise, the data were measured with the dual-PRF mode. Therefore, unfolding of Doppler velocity was applied automatically.

About this data

If you need the raw data set, please refer to "Contact Us" above.

Related Information



 [Enlarge Image](#)

MR00-K06

Ship Name: MIRAI

Period: 2000-08-03 - 2000-10-13

Chief Scientist: Takatoshi Takizawa (JAMSTEC)

Project Name: [Arctic Ocean Climate System Research]

Update History

Date	Description
2016-11-23	An observation data was registered.

JAMSTEC

[Site Policy](#)

[Privacy Policy](#)

[Application for Data and Samples](#)

[Data Policy](#)

What's New

[Update History](#)

[Feeds](#)

Lists

[Publication List](#)

[Amount of Public Info.](#)

Data

[Map Search](#)

[Data Tree](#)

[Detailed Search](#)

Information of the Ships

[NATSUSHIMA](#)

[KAIYO](#)

[YOKOSUKA](#)

[MIRAI](#)

[KAIREI](#)

[CHIKYU](#)

[KAIMEI](#)

[SHINSEI MARU](#)

[HAKUHO MARU](#)

Information of the Submersibles

[KAIKO](#)

[SHINKAI 2000](#)

[SHINKAI 6500](#)

[DEEP TOW](#)

[HYPER-DOLPHIN](#)

[URASHIMA](#)

[YOKOSUKA DEEP TOW](#)

[6K Camera DEEP TOW](#)

[6K Sonar DEEP TOW](#)

[KM-ROV](#)

[POWER GRAB SAMPLER \(SHELL\)](#)

[POWER GRAB SAMPLER \(CLOW\)](#)

[BMS](#)

Go to a Cruise Information

Cruise ID:

Go to a Dive Information

Dive ID:

Copyright 2011 Japan Agency for Marine-Earth Science and Technology



JAMSTEC

国立研究開発法人
海洋研究開発機構
JAPAN AGENCY FOR MARINE-EARTH SCIENCE AND TECHNOLOGY