

MIRAI MR14-04 Leg1 Conductivity-Temperature-Depth Profiler (CTD)

Last Modified: 2018-04-09

[ReadMe](#) [Observation Data](#) [Data Format](#)

Cruise ID: [MR14-04 Leg1](#)

Conductivity-Temperature-Depth Profiler (CTD): Processed (PI)

Data Policy: [JAMSTEC](#)

Observation Items: Pressure, Temperature, Salinity, Dissolved oxygen

Science Keywords:

OCEANS > OCEAN CHEMISTRY > OXYGEN
OCEANS > OCEAN TEMPERATURE > WATER TEMPERATURE
OCEANS > SALINITY/DENSITY > SALINITY

Cruise Report

http://www.godac.jamstec.go.jp/catalog/data/doc_catalog/media/MR14-04_leg1-2_all.pdf

[For Using Data](#)

Principal Investigator

Hiroshi Uchida (JAMSTEC)

Use Constraints

See [Terms and Conditions](#) about constrain of use.

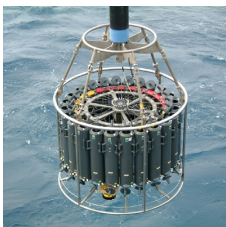
Data Citation

See [Terms and Conditions](#) about data citation.

Instrument

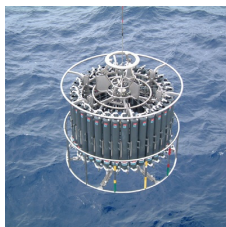
Instrument:

Water sampling system with CTD (30
litters * 24 bottles)



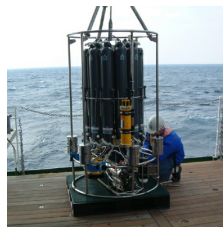
Instrument:

Water sampling system with CTD (12
litters * 36 bottles)



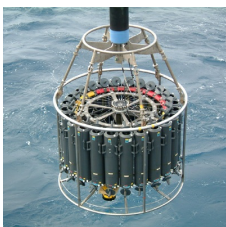
Instrument:

Water sampling system with CTD (12
litters * 12 bottles)



Instrument:

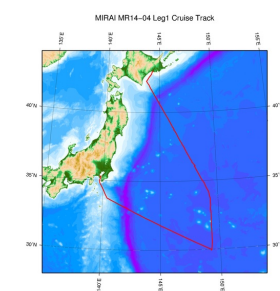
Conductivity temperature depth
measurements (CTD)



Overview

Please see the [Cruise report](#) for details of data.

Related Information



[Enlarge Image](#)

MR14-04 Leg1

Ship Name: MIRAI

Period: 2014-07-08 - 2014-07-15

Chief Scientist: Hiroshi Uchida (JAMSTEC)

Project Name: [POST-WOCE Hydrography]

Proposal ▶ Collaborative study on the zonal distribution of dissolved organic carbon in the far North

Title: Pacific

Update History

2018-04-09	An observation data was registered.
2015-06-30	An observation data was registered.

Privacy Policy
Application for Data and
Samples
Data Policy

What's New
Update History
Feeds

Amount of Public Info.

Data
Map Search
Data Tree
Detailed Search

KAIYO
YOKOSUKA
MIRAI
KAIREI
CHIKYU
KAIMEI
SHINSEI MARU
HAKUHO MARU

SHINKAI 2000
SHINKAI 6500
DEEP TOW
HYPER-DOLPHIN
URASHIMA
YOKOSUKA DEEP TOW
6K Camera DEEP TOW
6K Sonar DEEP TOW
KM-ROV
POWER GRAB SAMPLER
(SHELL)
POWER GRAB SAMPLER
(CLOW)
BMS

Cruise ID:

Go to a Dive Information

Dive ID:

Copyright 2011 Japan Agency for Marine-Earth Science and
Technology



JAMSTEC 国立研究開発法人
海洋研究開発機構
JAPAN AGENCY FOR MARINE-EARTH SCIENCE AND TECHNOLOGY

MIRAI MR14-04 Leg1 Conductivity-Temperature-Depth Profiler (CTD)

Last Modified: 2018-04-09

[ReadMe](#) [Observation Data](#) [Data Format](#)

Cruise ID: [MR14-04 Leg1](#)

Conductivity-Temperature-Depth Profiler (CTD): Processed (PI)

Data Policy: [JAMSTEC](#)

CTD WOCE-type1

Format Description for the Processed (PI) Data

Provided in the Exchange Format of CCHDO (CLIVAR and Carbon Hydrographic Data Office). Please see the following link for details of Exchange Format.

[CCHDO | CLIVAR & Carbon Hydrographic Data Office](#)

Data in following cruise is not expressed with Exchange Format. Please see the site of each cruise for format.

MR02-K05 Leg1

MR04-05

Format Description for the QCed Data

Each data file contains one line header (meta data) followed by data lines for each cast.

The number of data lines are recorded in the header.

Header part

No.	Column	Content	Format	Remarks
1	1	Header ID	a1	fixed as '#'
2	3 - 6	Data ID	a4	CTD
3	8 - 22	Cruise ID	a15	MRYY-(K)XX(_legx)
4	24 - 31	Cast name	a8	
5	33 - 40	Date	i8	YYYYMMDD (UTC)
6	42 - 45	Time	i4	hhmm (UTC)
7	47 - 55	Latitude	i2,a1,f5.2,a1	dd-mm.mmN(S)
8	57 - 66	Longitude	i3,a1,f5.2,a1	ddd-mm.mmE(W)
9	68 - 71	Number of data lines	i4	
10	72 - 73	Terminator	-	CR+LF

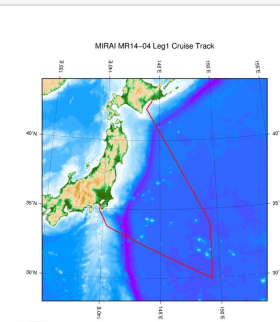
Data part

No.	Column	Content	Unit	Format	Remarks
1	1 - 11	Pressure	dbar	f11.3	
2	12 - 22	Temperature	deg-C	f11.4	ITS-90
3	23 - 33	Salinity	PSU	f11.4	PSS-78
4	34 - 44	Dissolved oxygen	umol/kg	f11.3	
5	45 - 55	Flag	-	i11	1 - 7 : space 8 : flag of pressure 9 : flag of temperature 10 : flag of salinity 11 : flag of dissolved oxygen * reference : Definition of Quality Control Flags
6	56 - 57	Terminator	-	-	CR+LF

Each contents of the data part is stored in 11 bytes.

Missing value is presented by '-5', and error value is presented by '-9'.

Related Information



[Enlarge Image](#)

MR14-04 Leg1

Ship Name: MIRAI

Period: 2014-07-08 - 2014-07-15

Chief Scientist: Hiroshi Uchida (JAMSTEC)

Project Name: [POST-WOCE Hydrography]

Proposal ▶ Collaborative study on the zonal distribution of dissolved organic carbon in the far North

Title: Pacific

Update History

2018-04-09	An observation data was registerd.
2015-06-30	An observation data was registerd.

Feeds

HAKUHO MARU

6K Camera DEEP TOW
6K Sonar DEEP TOW
KM-ROV
POWER GRAB SAMPLER
(SHELL)
POWER GRAB SAMPLER
(CLOW)
BMS

Copyright 2011 Japan Agency for Marine-Earth Science and
Technology



JAMSTEC 国立研究開発法人
海洋研究開発機構
JAPAN AGENCY FOR MARINE-EARTH SCIENCE AND TECHNOLOGY

MIRAI MR14-04 Leg1 Conductivity-Temperature-Depth Profiler (CTD)

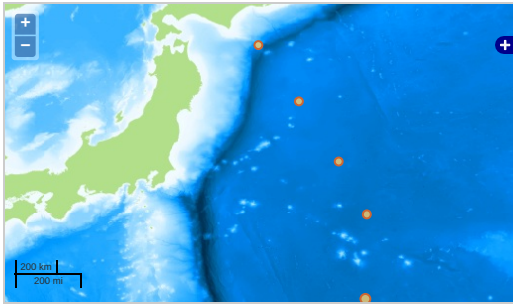
Last Modified: 2018-04-09

[ReadMe](#) [Observation Data](#) [Data Format](#)

Cruise ID: [MR14-04 Leg1](#)
Conductivity-Temperature-Depth Profiler (CTD): Processed (PI)
Data Policy: [JAMSTEC](#)
Observation Items: Pressure, Temperature, Salinity, Dissolved oxygen
Science Keywords:
OCEANS > OCEAN CHEMISTRY > OXYGEN
OCEANS > OCEAN TEMPERATURE > WATER TEMPERATURE
OCEANS > SALINITY/DENSITY > SALINITY

Observation Map

1. Clicking the icon displays a balloon with observation information.
2. Then click the observation name, figures will be displayed.



... Observation Line ... Navigation ... Observation, Dive Point, Hole

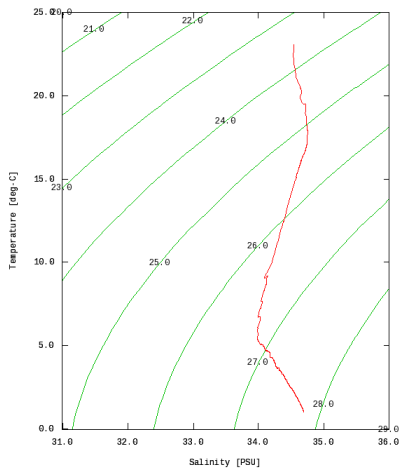
Imagery reproduced from ...

Figures

P10N_00001_00001_ct1



MR14-04 Leg1: P10N_00001_00001_ct1
Conductivity-Temperature-Depth Profiler (CTD): Salinity



Data List

Add to Basket

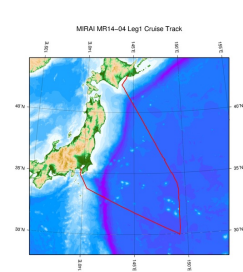
File names

- P10N_00001_00001_ct1.csv
- P10N_00001_00002_ct1.csv
- P10N_00007_00001_ct1.csv
- P10N_00014_00001_ct1.csv
- P10N_00022_00001_ct1.csv
- P10N_00030_00001_ct1.csv

- Observation List
The list of observation is shown as follows.

Observation	Time and Date	Lat. [°]	Lon. [°]
P10N_00001_00001_ct1	2014-07-11 00:58	29.9810	149.2583
P10N_00001_00002_ct1	2014-07-11 08:20	29.9562	149.2545
P10N_00007_00001_ct1	2014-07-12 06:18	33.7327	149.3218
P10N_00014_00001_ct1	2014-07-12 22:03	36.0807	148.0740
P10N_00022_00001_ct1	2014-07-13 18:15	38.7513	146.3075
P10N_00030_00001_ct1	2014-07-14 12:25	41.2483	144.5085

Related Information



[Enlarge Image](#)

MR14-04 Leg1

Ship Name: MIRAI

Period: 2014-07-08 - 2014-07-15

Chief Scientist: Hiroshi Uchida (JAMSTEC)

Project Name: [POST-WOCE Hydrography]

Proposal: Collaborative study on the zonal distribution of dissolved organic carbon in the far North Pacific

Title:

Update History

2018-04-09	An observation data was registered.
2015-06-30	An observation data was registered.

JAMSTEC

[Site Policy](#)
[Privacy Policy](#)
[Application for Data and Samples](#)
[Data Policy](#)

[What's New](#)
[Update History](#)
[Feeds](#)

Lists

[Publication List](#)
[Amount of Public Info.](#)

Data

[Map Search](#)
[Data Tree](#)
[Detailed Search](#)

Information of the Ships

[NATSUSHIMA](#)
[KAIYO](#)
[YOKOSUKA](#)
[MIRAI](#)
[KAIREI](#)
[CHIKYU](#)
[KAIMEI](#)
[SHINSEI MARU](#)
[HAKUHO MARU](#)

Information of the Submersibles

[KAIKO](#)
[SHINKAI 2000](#)
[SHINKAI 6500](#)
[DEEP TOW](#)
[HYPER-DOLPHIN](#)
[URASHIMA](#)
[YOKOSUKA DEEP TOW](#)
[6K Camera DEEP TOW](#)
[6K Sonar DEEP TOW](#)
[KM-ROV](#)
[POWER GRAB SAMPLER \(SHELL\)](#)
[POWER GRAB SAMPLER \(CLOW\)](#)
[BMS](#)

Go to a Cruise Information

Cruise ID:

Go to a Dive Information

Dive ID:

Copyright 2011 Japan Agency for Marine-Earth Science and Technology



JAMSTEC 国立研究開発法人
海洋研究開発機構
JAPAN AGENCY FOR MARINE-EARTH SCIENCE AND TECHNOLOGY