

## MIRAI MR11-05 Leg2 Ozone

Last Modified: 2014-02-28

[ReadMe](#) [Observation Data](#)

Cruise ID: [MR11-05 Leg2](#)

Ozone: Processed (PI)

Data Policy: [JAMSTEC](#)

Observation Items:

Science Keywords:

### Data Information

Ozone (O3) measurement was continually conducted during the cruise. Ambient air was continually sampled on the compass deck and drawn through ~20-m-long Teflon tubes connected to UV photometric based ozone analyzer (Model 49C, Thermo Fisher 5.10-2 Scientific) in the Research Information Center.

### Cruise Report

[http://www.godac.jamstec.go.jp/catalog/data/doc\\_catalog/media/MR11-05\\_leg1-2\\_all.pdf](http://www.godac.jamstec.go.jp/catalog/data/doc_catalog/media/MR11-05_leg1-2_all.pdf)

### For Using Data

#### Principal Investigator

Hisahiro TAKASHIMA (Research Institute for Global Change (RIGC)  
, Environmental Biogeochemical Cycle Research Program  
, Atmospheric Composition Research Team)

#### Use Constraints

It is recommended to contact the above investigator before use for publication.

#### Data Citation

It is recommended to contact the above investigator before use for publication.

### Instrument

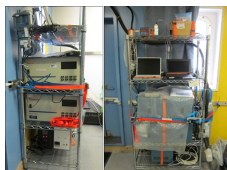
Instrument:

UV photometric based ozone analyzer

(Model 49C, Thermo Fisher 5.10-2

Scientific)

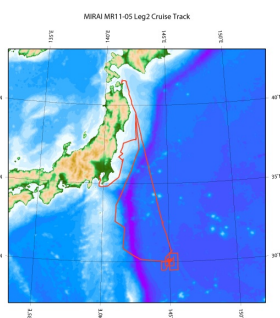
Instrument Information:



### Data Format

Text format. See the header of the data files for more details.

### Related Information



[Enlarge Image](#)

#### MR11-05 Leg2

Ship Name: MIRAI

Period: 2011-07-17 - 2011-08-04

Chief Scientist: Makio Honda (JAMSTEC)

Project Name: [Station S1, Station KEO]

Proposal ▶ Change in material cycles and ecosystem by the climate change and its feedback

Title:

### Update History

2014-02-28 An observation data was registered.

JAMSTEC  
[Site Policy](#)  
[Privacy Policy](#)  
[Application for Data and Samples](#)  
[Data Policy](#)  
[What's New](#)  
[Update History](#)  
[Feeds](#)

[Lists](#)  
[Publication List](#)  
[Amount of Public Info.](#)  
[Data](#)  
[Map Search](#)  
[Data Tree](#)  
[Detailed Search](#)

[Information of the Ships](#)  
NATSUSHIMA  
KAIYO  
YOKOSUKA  
MIRAI  
KAIREI  
CHIKYU  
KAIMEI  
SHINSEI MARU  
HAKUHO MARU

[Information of the Submersibles](#)  
KAIKO  
SHINKAI 2000  
SHINKAI 6500  
DEEP TOW  
HYPER-DOLPHIN  
URASHIMA  
YOKOSUKA DEEP TOW  
6K Camera DEEP TOW  
6K Sonar DEEP TOW  
KM-ROV  
POWER GRAB SAMPLER (SHELL)  
POWER GRAB SAMPLER (CLOW)  
BMS

#### Go to a Cruise Information

Cruise ID:

#### Go to a Dive Information

Dive ID:



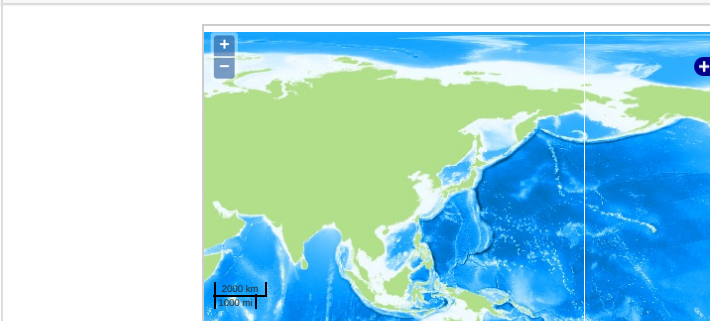
## MIRAI MR11-05 Leg2 Ozone

Last Modified: 2014-02-28

[ReadMe](#) [Observation Data](#)

Cruise ID: **MR11-05 Leg2**  
Ozone: Processed (PI)  
Data Policy: [JAMSTEC](#)  
Observation Items:  
Science Keywords:

### Observation Map



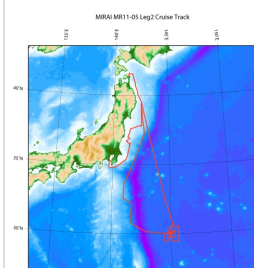
... Observation Line ... Navigation ... Observation, Dive Point, Hole

### Data List

#### File names

☐ mr1105\_o3.csv

### Related Information



[Enlarge Image](#)

#### MR11-05 Leg2

Ship Name: MIRAI  
Period: 2011-07-17 - 2011-08-04  
Chief Scientist: Makio Honda (JAMSTEC)  
Project Name: [Station S1, Station KEO]  
Proposal: Change in material cycles and ecosystem by the climate change and its feedback  
Title:

### Update History

2014-02-28 An observation data was registered.

#### JAMSTEC

[Site Policy](#)  
[Privacy Policy](#)  
[Application for Data and Samples](#)  
[Data Policy](#)  
[What's New](#)  
[Update History](#)  
[Feeds](#)

#### Lists

[Publication List](#)  
[Amount of Public Info.](#)  
[Data](#)  
[Map Search](#)  
[Data Tree](#)  
[Detailed Search](#)

#### Information of the Ships

[NATSUSHIMA](#)  
[KAIYO](#)  
[YOKOSUKA](#)  
[MIRAI](#)  
[KAIREI](#)  
[CHIKYU](#)  
[KAIMEI](#)  
[SHINSEI MARU](#)  
[HAKUHO MARU](#)

#### Information of the Submersibles

[KAIKO](#)  
[SHINKAI 2000](#)  
[SHINKAI 6500](#)  
[DEEP TOW](#)  
[HYPER-DOLPHIN](#)  
[URASHIMA](#)  
[YOKOSUKA DEEP TOW](#)  
[6K Camera DEEP TOW](#)  
[6K Sonar DEEP TOW](#)  
[KM-ROV](#)  
[POWER GRAB SAMPLER \(SHELL\)](#)  
[POWER GRAB SAMPLER \(CLOW\)](#)  
[BMS](#)

#### Go to a Cruise Information

Cruise ID:

#### Go to a Dive Information

Dive ID: