

YOKOSUKA YK11-E04 Leg1 CTD, DO and turbidity data off Sanriku

Last Modified: 2013-02-25

[ReadMe](#) [Observation Data](#)

Cruise ID: [YK11-E04 Leg1](#)

CTD, DO and turbidity data off Sanriku : Processed (PI)

Data Policy: [JAMSTEC](#)

Observation Items:

Science Keywords:

Data Information

Vertical profile data of CTD, Turbidity and DO with Deep Tow survey off Sanriku.

Cruise Report

http://www.godac.jamstec.go.jp/catalog/data/doc_catalog/media/YK11-E04_leg1_all.pdf

For Using Data

Principal Investigator

Yasuo Furushima (Institute of Biogeosciences Marine Biodiversity Research Program)

Use Constraints

There is not a special consideration. However, please contact top of a cruise (Katsunori Fjikura) or Y. Furushima when you use data.

Data Citation

See [Terms and Conditions](#) about data citation.

Instrument

Instrument:

CTD with a Deep Tow system,
Compact Optode(JFE Advantech Co.,
Ltd.), Compact-LT(ATU6-CMP, JFE
Advantech Co., Ltd.)

Instrument Information:

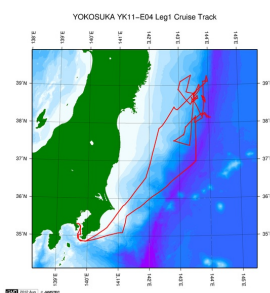


Data Format

File format:Excel file

Related Information

☒ Cruise Data ☐ Dive Data



[Enlarge Image](#)

YK11-E04 Leg1

Ship Name: YOKOSUKA

Period: 2011-06-02 - 2011-06-12

Chief Scientist: Katsunori Fujikura (JAMSTEC)

Proposal Impact by the huge earthquake on marine ecosystem including environment, chemical,
Title: geology and geophysics in Off Sanriku area

Update History

2013-02-25 An observation data was registerd.

JAMSTEC

[Site Policy](#)
[Privacy Policy](#)
[Application for Data and Samples](#)
[Data Policy](#)

[What's New](#)
[Update History](#)
[Feeds](#)

Lists

[Publication List](#)
[Amount of Public Info.](#)

Data

[Map Search](#)
[Data Tree](#)
[Detailed Search](#)

Information of the Ships

[NATSUSHIMA](#)
[KAIYO](#)
[YOKOSUKA](#)
[MIRAI](#)
[KAIREI](#)
[CHIKYU](#)
[KAIMEI](#)
[SHINSEI MARU](#)
[HAKUHO MARU](#)

Information of the Submersibles

[KAIKO](#)
[SHINKAI 2000](#)
[SHINKAI 6500](#)
[DEEP TOW](#)
[HYPER-DOLPHIN](#)
[URASHIMA](#)
[YOKOSUKA DEEP TOW](#)
[6K Camera DEEP TOW](#)
[6K Sonar DEEP TOW](#)
[KM-ROV](#)
[POWER GRAB SAMPLER \(SHELL\)](#)
[POWER GRAB SAMPLER \(CLOW\)](#)
[BMS](#)

Go to a Cruise Information

Cruise ID:

Go to a Dive Information

Dive ID:



YOKOSUKA YK11-E04 Leg1 CTD, DO and turbidity data off Sanriku

Last Modified: 2013-02-25

[ReadMe](#) [Observation Data](#)

Cruise ID: **YK11-E04 Leg1**

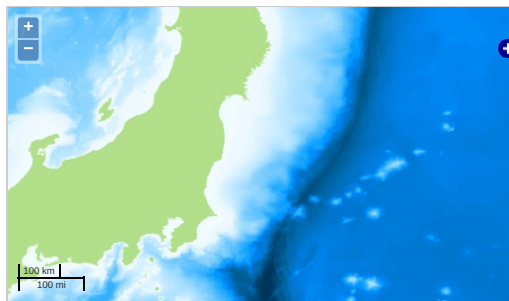
CTD, DO and turbidity data off Sanriku Processed (PI)

Data Policy: [JAMSTEC](#)

Observation Items:

Science Keywords:

Observation Map



Imagery reproduced from ...

... Observation Line ... Navigation ... Observation, Dive Point, Hole

Data List

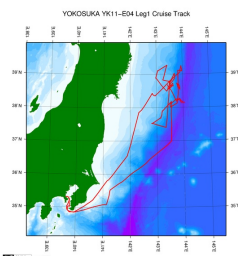
[Add to Basket](#)

File names

☐ YK11E04-D93_CTD.xls
☐ YK11E04-D94_CTD.xls
☐ YK11E04-D95_CTD.xls
☐ YK11E04-D96_CTD.xls
☐ YK11E04-D97_CTD.xls
☐ YK11E04-D98_CTD.xls

Related Information

☒ Cruise Data ☐ Dive Data



[Enlarge Image](#)

YK11-E04 Leg1

Ship Name: YOKOSUKA

Period: 2011-06-02 - 2011-06-12

Chief Scientist: Katsunori Fujikura (JAMSTEC)

Proposal Impact by the huge earthquake on marine ecosystem including environment, chemical, geology and geophysics in Off Sanriku area

Update History

2013-02-25 An observation data was registerd.

JAMSTEC

[Site Policy](#)

[Privacy Policy](#)

[Application for Data and Samples](#)

[Data Policy](#)

[What's New](#)

[Update History](#)

[Feeds](#)

Lists

[Publication List](#)

[Amount of Public Info.](#)

Data

[Map Search](#)

[Data Tree](#)

[Detailed Search](#)

Information of the Ships

[NATSUSHIMA](#)

[KAIYO](#)

[YOKOSUKA](#)

[MIRAI](#)

[KAIREI](#)

[CHIKYU](#)

[KAIMEI](#)

[SHINSEI MARU](#)

[HAKUHO MARU](#)

Information of the Submersibles

[KAIKO](#)

[SHINKAI 2000](#)

[SHINKAI 6500](#)

[DEEP TOW](#)

[HYPER-DOLPHIN](#)

[URASHIMA](#)

[YOKOSUKA DEEP TOW](#)

[6K Camera DEEP TOW](#)

[6K Sonar DEEP TOW](#)

[KM-ROV](#)

[POWER GRAB SAMPLER \(SHELL\)](#)

[POWER GRAB SAMPLER \(CLOW\)](#)

[BMS](#)

Go to a Cruise Information

Cruise ID:

Go to a Dive Information

Dive ID: