

SHINSEI MARU KS-17-J09C Expendable Bathythermograph (XBT) Fall-rate bias corrected

Last Modified: 2019-10-02

[ReadMe](#) [Observation Data](#) [Data Format](#)

Cruise ID: [KS-17-J09C](#)

Expendable Bathythermograph (XBT) Fall-rate bias corrected : Processed (DMO)-QCed

Data Policy: [JAMSTEC](#)

Observation Items: Depth, Temperature

Science Keywords:

OCEANS > OCEAN TEMPERATURE > WATER TEMPERATURE

Cruise Report

http://www.godac.jamstec.go.jp/catalog/data/doc_catalog/media/KS-17-J09C_all.pdf

For Using Data

Principal Investigator

Data Management Office

Use Constraints

See [Terms and Conditions](#) about constrain of use.

Data Citation

See [Terms and Conditions](#) about data citation.

Instrument

Instrument:

XBT/XCTD



Overview

Using XBT (eXpendable Bathy Thermograph) system, the vertical distribution of water temperature is observed during free fall of its probe part in the seawater. On board, the analogue signal is converted to the temperature by data processor and the data is stored in PC. Depth data is calculated from the elapsed time.

Correction method

Fall-rate bias corrected data using new coefficients of Kizu et al. (2005) for all TSK T-5 probes.

[Reference]

Kizu et al. (2005): A New Fall-Rate Equation for T-5 Expendable Bathythermograph (XBT) by TSK. Journal of Oceanography, Vol. 61, pp. 115 to 121

System

(1) Launcher

Hand launcher

Manufacturer : Sippican, Inc.

Operation area : Rear upper deck

Automatic launcher

Manufacturer : Tsurumi Seiki Co., LTD.

Location : Rear upper deck. The control panel is installed in the observatory.

(2) Converter

Manufacturer : Tsurumi Seiki Co., LTD.

Location : observatory

Sampling rate : 50 msec

(3) XBT probe specifications

Probe Type	TSK T-5	TSK T-6	TSK T-7	TSK T-10
Temperature range [deg-C]	-2 to 35			
Temperature accuracy [deg-C]	+/- 0.2			
Temperature resolution [deg-C]	0.01			
Measurement depth [m]	1830	460	760	300
Depth accuracy [m]	5 or +/- 2% of depth; whichever is larger			
Maximum elapsed time [sec]	291	73	123	48
Rated ship speed [knot]	6	15	15	10

Since XBT carries no pressure sensor, we need to estimate depth from the elapsed time. The fall-rate equation is as follows.

$$Z = at + 10E^{-3} * bt^2$$

Where Z(m) is the depth and t(sec) is the elapsed time.

In addition, coefficients of the fall-rate equation are different by probe types.

The corrected data were calculated using new coefficients and elapsed time.

The elapsed time was calculated from the original depth which had been calculated by manufacture's coefficients.

Probe Type	TSK T-5 (New Coefficients of Kizu et al.)	TSK T-5 (Manufacturer's Coefficients)
Coefficient-a	6.54071	6.828
Coefficient-b	-1.8691	-1.82

The list of an XBT type used in each cast is as follows.

Cast name	Probe Serial No.	Probe Type	Launcher	Converter
XBT-003520170711p	-	T-5	Auto	MK-150N
XBT-004020170717p	-	T-5	Auto	MK-150N
XBT-004120170718p	-	T-5	Auto	MK-150N
XBT-004220170725p	-	T-5	Auto	MK-150N

Data processing

(1) For sensor's stability, values of less than 1 m for temperature are replaced by missing values, respectively, based on manufacturer's recommendation.

(2) Quality control

QCed data were added flag according to the NODC (National Oceanographic Data Center) quality control procedure.

1) The gradient check of adjacent depth data

2) The broad range check set up at given ocean space and depth

Please see the site of NODC of the following link for quality control procedure in detail.

[QUALITY CONTROL AND PROCESSING OF HISTORICAL OCEANOGRAPHIC TEMPERATURE, SALINITY, AND OXYGEN DATA](#)

In addition, an abnormal value is identified by a visual check, and the data after visual QC is released.

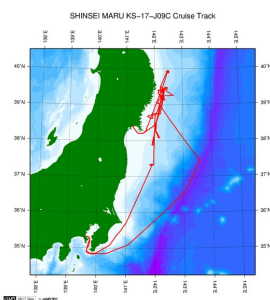
Note

(1) It is reported that T-5 probes produced by Tsurumi Seiki Co. Ltd. (TSK T-5 probes) have a fall-rate bias. Please see the following about publication policy of XBT fall-rate bias correction data.

[Publication policy of XBT fall-rate bias correction data](#)

Related Information

☒ Cruise Data ☐ Dive Data



[Enlarge Image](#)

KS-17-J09C

Ship Name: SHINSEI MARU

Period: 2017-07-08 - 2017-07-26

Chief Scientist: Shinji Tsuchida (JAMSTEC)

Project Name: [Tohoku Ecosystem-Associated Marine Sciences (TEAMS)]

Proposal: Researches on marine ecosystem dynamics in the Tsunami affected area off Sanriku

Title:

Update History

2019-10-02	An observation data was registered.
2017-12-20	An observation data was registered.
2017-12-13	An observation data was registered.

JAMSTEC

[Site Policy](#)
[Privacy Policy](#)
[Application for Data and Samples](#)
[Data Policy](#)
What's New
[Update History](#)
[Feeds](#)

Lists

[Publication List](#)
[Amount of Public Info.](#)
Data
[Map Search](#)
[Data Tree](#)
[Detailed Search](#)

Information of the Ships

[NATSUSHIMA](#)
[KAIYO](#)
[YOKOSUKA](#)
[MIRAI](#)
[KAIREI](#)
[CHIKYU](#)
[KAIMEI](#)
[SHINSEI MARU](#)
[HAKUHO MARU](#)

Information of the Submersibles

[KAIKO](#)
[SHINKAI 2000](#)
[SHINKAI 6500](#)
[DEEP TOW](#)
[HYPER-DOLPHIN](#)
[URASHIMA](#)
[YOKOSUKA DEEP TOW](#)
[6K Camera DEEP TOW](#)
[6K Sonar DEEP TOW](#)
[KM-ROV](#)
[POWER GRAB SAMPLER \(SHELL\)](#)
[POWER GRAB SAMPLER \(CLOW\)](#)
[BMS](#)

Go to a Cruise Information

Cruise ID:

Go to a Dive Information

Dive ID:

Copyright 2011 Japan Agency for Marine-Earth Science and Technology

JAMSTEC 国立研究開発法人
 海洋研究開発機構
 JAPAN AGENCY FOR MARINE-EARTH SCIENCE AND TECHNOLOGY

SHINSEI MARU KS-17-J09C Expendable Bathythermograph (XBT) Fall-rate bias corrected

Last Modified: 2019-10-02

[ReadMe](#) | [Observation Data](#) | [Data Format](#)

 Cruise ID: [KS-17-J09C](#)

Expendable Bathythermograph (XBT) Fall-rate bias corrected : Processed (DMO)-QCed

 Data Policy: [JAMSTEC](#)

XBT DMO

Each data file contains one line header (meta data) followed by data lines for each cast.

The number of data lines are recorded in the header.

Header part

No.	Column	Content	Format	Remarks
1	1	Header ID	a1	fixed as '#'
2	3 - 6	Data ID	a4	XBT
3	8 - 22	Cruise ID	a15	
4	33 - 40	Date	i8	YYYYMMDD (UTC)
5	42 - 45	Time	i4	hhmm (UTC)
6	47 - 55	Latitude	i2,a1,f5.2,a1	dd-mm.mmN(S)
7	57 - 66	Longitude	i3,a1,f5.2,a1	ddd-mm.mmE(W)
8	68 - 71	Number of data lines	i4	
9	72 - 73	Terminator	-	CR+LF

Data part

No.	Column	Content	Unit	Format	Remarks
1	1 - 11	Depth	m	f11.1	
2	12 - 22	Temperature	deg-C	f11.2	ITS-90
3	45 - 55	Flag	-	i11	1 - 7 : space 8 : flag of depth 9 : flag of temperature 10 - 11 : space * reference : Definition of Quality Control Flags
4	56 - 57	Terminator	-	-	CR+LF

Each contents of the data part is stored in 11 bytes.

Missing value is presented by '-5', and error value is presented by '-9'.

Definition of Quality Control Flags

1. Depth Flags

- 0 - accepted value
- 1 - error in recorded depth (same or less than previous depth)
- 2 - density inversion

2. Observed Level Flags

- N - missing value
- 0 - accepted value
- 1 - range outlier (outside of broad range check)
- 2 - failed inversion check
- 3 - failed gradient check
- 4 - zero anomaly
- 5 - failed combined gradient and inversion checks
- 6 - failed range and inversion checks
- 7 - failed range and gradient checks
- 8 - failed range and zero anomaly checks
- 9 - failed range and combined gradient and inversion checks
- A - failed visual check

* Range and gradient check is performed to XBT data.

QCed data were added flag according to the NODC (National Oceanographic Data Center) quality control procedure, additionally visually checked. Please see the site of NODC of the following link for quality control procedure.

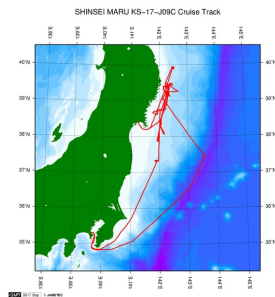
[QUALITY CONTROL AND PROCESSING OF HISTORICAL OCEANOGRAPHIC TEMPERATURE, SALINITY, AND OXYGEN DATA](#)

Sample Program

[ex_read2.f](#)

Related Information

☒ Cruise Data ☐ Dive Data



[Enlarge Image](#)

KS-17-J09C

Ship Name: SHINSEI MARU

Period: 2017-07-08 - 2017-07-26

Chief Scientist: Shinji Tsuchida (JAMSTEC)

Project Name: [Tohoku Ecosystem-Associated Marine Sciences (TEAMS)]

Proposal Researches on marine ecosystem dynamics in the Tsunami affected area off Sanriku

Title:

Update History

2019-10-02	An observation data was registered.
2017-12-20	An observation data was registered.
2017-12-13	An observation data was registered.

JAMSTEC

[Site Policy](#)

[Privacy Policy](#)

[Application for Data and Samples](#)

[Data Policy](#)

[What's New](#)

[Update History](#)

[Feeds](#)

Lists

[Publication List](#)

[Amount of Public Info.](#)

Data

[Map Search](#)

[Data Tree](#)

[Detailed Search](#)

Information of the Ships

[NATSUSHIMA](#)

[KAIYO](#)

[YOKOSUKA](#)

[MIRAI](#)

[KAIREI](#)

[CHIKYU](#)

[KAIMEI](#)

[SHINSEI MARU](#)

[HAKUHO MARU](#)

Information of the Submersibles

[KAIKO](#)

[SHINKAI 2000](#)

[SHINKAI 6500](#)

[DEEP TOW](#)

[HYPER-DOLPHIN](#)

[URASHIMA](#)

[YOKOSUKA DEEP TOW](#)

[6K Camera DEEP TOW](#)

[6K Sonar DEEP TOW](#)

[KM-ROV](#)

[POWER GRAB SAMPLER \(SHELL\)](#)

[POWER GRAB SAMPLER \(CLOW\)](#)

[BMS](#)

Go to a Cruise Information

Cruise ID:

Go to a Dive Information

Dive ID:

Copyright 2011 Japan Agency for Marine-Earth Science and Technology



JAMSTEC

国立研究開発法人
海洋研究開発機構
JAPAN AGENCY FOR MARINE-EARTH SCIENCE AND TECHNOLOGY

SHINSEI MARU KS-17-J09C Expendable Bathythermograph (XBT) Fall-rate bias corrected

Last Modified: 2019-10-02

[ReadMe](#) [Observation Data](#) [Data Format](#)

Cruise ID: **KS-17-J09C**

Expendable Bathythermograph (XBT) Fall-rate bias corrected Processed (DMO)-QCed

Data Policy: **JAMSTEC**

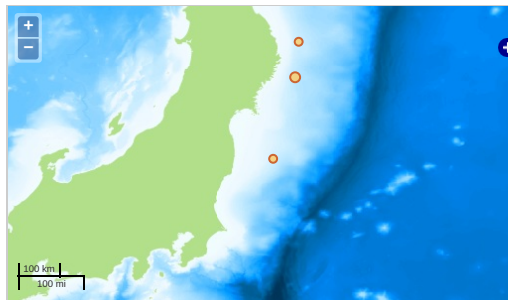
Observation Items: Depth, Temperature

Science Keywords:

OCEANS > OCEAN TEMPERATURE > WATER TEMPERATURE

Observation Map

1. Clicking the icon displays a balloon with observation information.
2. Then click the observation name, figures will be displayed.



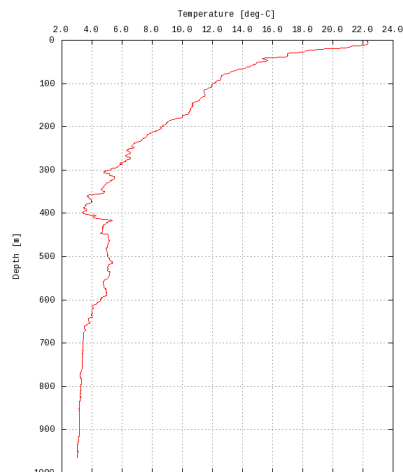
— ... Observation Line — ... Navigation ● ... Observation, Dive Point, Hole

Imagery reproduced from ...

Figures

XBT-003520170711p

KS-17-J09C: XBT-003520170711p
Expendable Bathythermograph (XBT) Fall-rate bias corrected: Temperature



Only values evaluated as "good" : all flags are 0" are plotted in profiles.
Please see Format Page for the definition of quality flags.

Data List

[Add to Basket](#)

File names

☐ XBT-003520170711p.dat
☐ XBT-004020170717p.dat
☐ XBT-004120170718p.dat
☐ XBT-004220170725p.dat
☐ ex_read2.f (Sample Program)

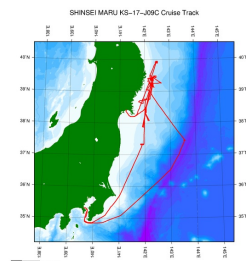
Observation List

The list of observation is shown as follows.

Observation	Time and Date	Lat. [°]	Lon. [°]
XBT-003520170711p	2017-07-11 06:34	39.1261	142.3736
XBT-004020170717p	2017-07-17 21:23	39.9136	142.4516
XBT-004120170718p	2017-07-18 21:20	39.4086	142.2166
XBT-004220170725p	2017-07-25 05:19	37.3166	141.8853

Related Information

[Cruise Data](#) [Dive Data](#)



 [Enlarge Image](#)

KS-17-J09C

Ship Name: SHINSEI MARU
Period: 2017-07-08 - 2017-07-26
Chief Scientist: Shinji Tsuchida (JAMSTEC)
Project Name: [Tohoku Ecosystem-Associated Marine Sciences (TEAMS)]
Proposal: Researches on marine ecosystem dynamics in the Tsunami affected area off Sanriku
Title:

Update History

2019-10-02	An observation data was registerd.
2017-12-20	An observation data was registerd.
2017-12-13	An observation data was registerd.

JAMSTEC

[Site Policy](#)
[Privacy Policy](#)
[Application for Data and Samples](#)
[Data Policy](#)

[What's New](#)
[Update History](#)
[Feeds](#)

Lists

[Publication List](#)
[Amount of Public Info.](#)

Data

[Map Search](#)
[Data Tree](#)
[Detailed Search](#)

Information of the Ships

[NATSUSHIMA](#)
[KAIYO](#)
[YOKOSUKA](#)
[MIRAI](#)
[KAIREI](#)
[CHIKYU](#)
[KAIMEI](#)
[SHINSEI MARU](#)
[HAKUHO MARU](#)

Information of the Submersibles

[KAIKO](#)
[SHINKAI 2000](#)
[SHINKAI 6500](#)
[DEEP TOW](#)
[HYPER-DOLPHIN](#)
[URASHIMA](#)
[YOKOSUKA DEEP TOW](#)
[6K Camera DEEP TOW](#)
[6K Sonar DEEP TOW](#)
[KM-ROV](#)
[POWER GRAB SAMPLER \(SHELL\)](#)
[POWER GRAB SAMPLER \(CLOW\)](#)
[BMS](#)

Go to a Cruise Information

Cruise ID:

Go to a Dive Information

Dive ID:

