

MIRAI MR15-03 Leg1 Radiosonde

Last Modified: 2017-10-31

[ReadMe](#) [Observation Data](#)

Cruise ID: [MR15-03 Leg1](#)

Radiosonde: Processed (PI)

Data Policy: [JAMSTEC](#)

Observation Items:

Science Keywords:

Data Information

Radiosonde sounding data for the comparison of Vaisala radiosondes. The comparison observations were performed by using RS92-SGPD with the receiving system MW31 on the aft wheelhouse and RS41-SGP with the existing receiving system MW41 on R/V Mirai. Because older version 3.61 of DigiCORA software was used during the cruises, all RS92 sounding data were simulated with DigiCORA v3.64 after the cruises.

Cruise Report

http://www.godac.jamstec.go.jp/catalog/data/doc_catalog/media/MR15-03_leg1_all.pdf

For Using Data

Principal Investigator

Kazuhiro Oshima (Institute of Arctic Climate and Environmental Research)

Use Constraints

None

Data Citation

Refer to the following paper about details of the observation and the results of comparison of radiosondes.

Kawai, Y., M. Katsumata, K. Oshima, M. E. Hori and J. Inoue: Comparison of Vaisala radiosondes RS41 and RS92 launched over the oceans from the Arctic to the tropics, Atmospheric Measurement Techniques, 10, 2485-2498, doi:10.5194/amt-10-2485-2017, 2017.

Instrument

Instrument:

Radiosonde receiving system (Vaisala

MW31)

Instrument Information:

Receiver (SPS311), Software

(DigiCORA v3.64), UHF antenna

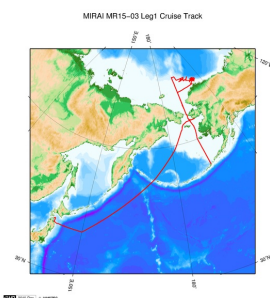
(RM32), GPS antenna (GA31)



Data Format

Text format. See the header of the data files for more details.

Related Information



[Enlarge Image](#)

MR15-03 Leg1

Ship Name: MIRAI

Period: 2015-08-23 - 2015-10-06

Chief Scientist: Shigeto Nishino (JAMSTEC)

Project Name: [Arctic Ocean Climate System Research]

Proposal ▶ Observational studies on the Arctic Ocean climate and ecosystem variability

Title:

Update History

2017-10-31 An observation data was registered.

JAMSTEC

[Site Policy](#)
[Privacy Policy](#)
[Application for Data and Samples](#)
[Data Policy](#)
[What's New](#)
[Update History](#)
[Feeds](#)

Lists

[Publication List](#)
[Amount of Public Info.](#)

[Data](#)
[Map Search](#)
[Data Tree](#)
[Detailed Search](#)

Information of the Ships

[NATSUSHIMA](#)
[KAIYO](#)
[YOKOSUKA](#)
[MIRAI](#)
[KAIREI](#)
[CHIKYU](#)
[KAIMEI](#)
[SHINSEI MARU](#)
[HAKUHO MARU](#)

Information of the Submersibles

[KAIKO](#)
[SHINKAI 2000](#)
[SHINKAI 6500](#)
[DEEP TOW](#)
[HYPER-DOLPHIN](#)
[URASHIMA](#)
[YOKOSUKA DEEP TOW](#)
[6K Camera DEEP TOW](#)
[6K Sonar DEEP TOW](#)
[KM-ROV](#)

Go to a Cruise Information

Cruise ID:

Go to a Dive Information

Dive ID:

POWER GRAB SAMPLER
(SHELL)
POWER GRAB SAMPLER
(CLOW)
BMS

Copyright 2011 Japan Agency for Marine-Earth Science and
Technology



JAMSTEC 国立研究開発法人
海洋研究開発機構
JAPAN AGENCY FOR MARINE-EARTH SCIENCE AND TECHNOLOGY

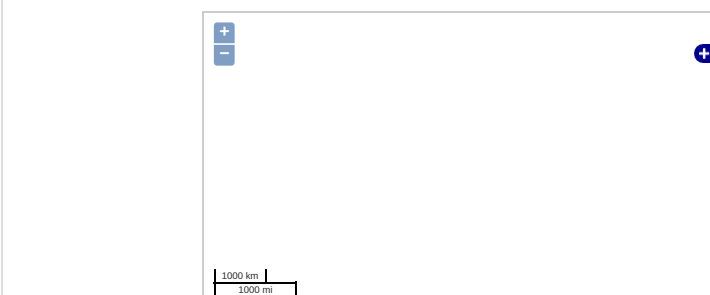
MIRAI MR15-03 Leg1 Radiosonde

Last Modified: 2017-10-31

[ReadMe](#) [Observation Data](#)

Cruise ID: [MR15-03 Leg1](#)
Radiosonde: Processed (PI)
Data Policy: [JAMSTEC](#)
Observation Items:
Science Keywords:

Observation Map



Imagery reproduced from ...

... Observation Line ... Navigation ... Observation, Dive Point, Hole

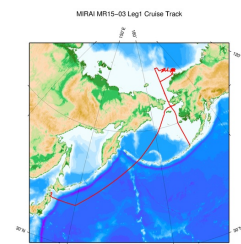
Data List

[Add to Basket](#)

File names

<input type="checkbox"/>	20150827_2330UTC_RS92_DigiCORA3.64.txt
<input type="checkbox"/>	20150828_2330UTC_RS92_DigiCORA3.64.txt
<input type="checkbox"/>	20150829_2330UTC_RS92_DigiCORA3.64.txt
<input type="checkbox"/>	20150831_2332UTC_RS92_DigiCORA3.64.txt
<input type="checkbox"/>	20150902_2330UTC_RS92_DigiCORA3.64.txt
<input type="checkbox"/>	20150904_2332UTC_RS92_DigiCORA3.64.txt
<input type="checkbox"/>	20150908_0530UTC_RS92_DigiCORA3.64.txt
<input type="checkbox"/>	20150912_2330UTC_RS92_DigiCORA3.64.txt
<input type="checkbox"/>	20150916_0530UTC_RS92_DigiCORA3.64.txt
<input type="checkbox"/>	20150924_2331UTC_RS92_DigiCORA3.64.txt
<input type="checkbox"/>	20150928_1731UTC_RS92_DigiCORA3.64.txt
<input type="checkbox"/>	20150928_2330UTC_RS92_DigiCORA3.64.txt
<input type="checkbox"/>	20150929_0530UTC_RS92_DigiCORA3.64.txt
<input type="checkbox"/>	20150930_1130UTC_RS92_DigiCORA3.64.txt
<input type="checkbox"/>	20150930_2330UTC_RS92_DigiCORA3.64.txt
<input type="checkbox"/>	20151004_2330UTC_RS92_DigiCORA3.64.txt

Related Information



[Enlarge Image](#)

MR15-03 Leg1

Ship Name: MIRAI
Period: 2015-08-23 - 2015-10-06
Chief Scientist: Shigeto Nishino (JAMSTEC)
Project Name: [Arctic Ocean Climate System Research]
Proposal ▶ Observational studies on the Arctic Ocean climate and ecosystem variability
Title:

Update History

2017-10-31 An observation data was registered.

JAMSTEC

[Site Policy](#)
[Privacy Policy](#)
[Application for Data and Samples](#)
[Data Policy](#)
[What's New](#)
[Update History](#)
[Feeds](#)

Lists

[Publication List](#)
[Amount of Public Info.](#)
[Data](#)
[Map Search](#)
[Data Tree](#)
[Detailed Search](#)

Information of the Ships

[NATSUSHIMA](#)
[KAIYO](#)
[YOKOSUKA](#)
[MIRAI](#)
[KAIREI](#)
[CHIKYU](#)
[KAIMEI](#)
[SHINSEI MARU](#)
[HAKUHO MARU](#)

Information of the Submersibles

[KAIKO](#)
[SHINKAI 2000](#)
[SHINKAI 6500](#)
[DEEP TOW](#)
[HYPER-DOLPHIN](#)
[URASHIMA](#)
[YOKOSUKA DEEP TOW](#)
[6K Camera DEEP TOW](#)
[6K Sonar DEEP TOW](#)
[KM-ROV](#)
[POWER GRAB SAMPLER \(SHELL\)](#)
[POWER GRAB SAMPLER \(CLOW\)](#)
[BMS](#)

Go to a Cruise Information

Cruise ID:

Go to a Dive Information

Dive ID:

