

MIRAI MR14-04 Leg1 Doppler Radar

Last Modified: 2016-11-23

ReadMe

Cruise ID: [MR14-04 Leg1](#)

Doppler Radar: Raw

Data Policy: [JAMSTEC](#)

Observation Items: Reflectivity, Doppler velocity

Science Keywords:

ATMOSPHERE	> PRECIPITATION	
ATMOSPHERE	> CLOUDS	
ATMOSPHERE	> ATMOSPHERIC WINDS	
SPECTRAL/ENGINEERING	> RADAR	> DOPPLER VELOCITY
SPECTRAL/ENGINEERING	> RADAR	> RADAR REFLECTIVITY

Cruise Report

http://www.godac.jamstec.go.jp/catalog/data/doc_catalog/media/MR14-04_leg1-2_all.pdf

For Using Data

Principal Investigator

Data Management Office

Use Constraints

See [Terms and Conditions](#) about constrain of use.

Data Citation

See [Terms and Conditions](#) about data citation.

Instrument

Instrument:

Doppler radar (MR14-04 Leg1 -)



Specifications

Doppler radar

Manufacturer/model:	Toshiba Co., Japan/ TW4419A
Pulse configuration :	Using pulse-compression
Frequency:	5370MHz (C-band)
Transmitter:	Solid-state transmitter
Polarimetry:	Horizontal and vertical
Peak power:	6kW(H) + 6kW(V)
Antenna diameter	4m
Beam angle:	1.0degree
Location (from sea surface):	24m (center position of antenna)

Inertial navigation system

Manufacturer/model:	iXBlue SAS, France / PHINS
Location (from sea surface):	21m

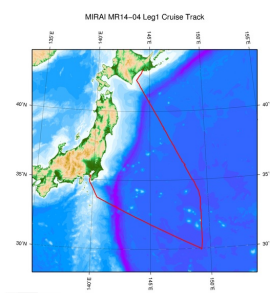
Parameter

In this cruise, the parameter was changed accordingly for system test and adjustment.

About this data

If you need the raw data set, please refer to "Contact Us" above.

Related Information



MR14-04 Leg1

Ship Name: MIRAI
Period: 2014-07-08 - 2014-07-15
Chief Scientist: Hiroshi Uchida (JAMSTEC)
Project Name: [POST-WOCE Hydrography]
Proposal ▶ Collaborative study on the zonal distribution of dissolved organic carbon in the far North Pacific
Title:

[Enlarge Image](#)

Update History	
2016-11-23	An observation data was registerd.

JAMSTEC

[Site Policy](#)
[Privacy Policy](#)
[Application for Data and Samples](#)
[Data Policy](#)

[What's New](#)
[Update History](#)
[Feeds](#)

Lists

[Publication List](#)
[Amount of Public Info.](#)

Data

[Map Search](#)
[Data Tree](#)
[Detailed Search](#)

Information of the Ships

[NATSUSHIMA](#)
[KAIYO](#)
[YOKOSUKA](#)
[MIRAI](#)
[KAIREI](#)
[CHIKYU](#)
[KAIMEI](#)
[SHINSEI MARU](#)
[HAKUHO MARU](#)

Information of the Submersibles

[KAIKO](#)
[SHINKAI 2000](#)
[SHINKAI 6500](#)
[DEEP TOW](#)
[HYPER-DOLPHIN](#)
[URASHIMA](#)
[YOKOSUKA DEEP TOW](#)
[6K Camera DEEP TOW](#)
[6K Sonar DEEP TOW](#)
[KM-ROV](#)
[POWER GRAB SAMPLER \(SHELL\)](#)
[POWER GRAB SAMPLER \(CLOW\)](#)
[BMS](#)

Go to a Cruise Information

Cruise ID:

Go to a Dive Information

Dive ID:

Copyright 2011 Japan Agency for Marine-Earth Science and Technology



JAMSTEC

国立研究開発法人
 海洋研究開発機構
 JAPAN AGENCY FOR MARINE-EARTH SCIENCE AND TECHNOLOGY

MIRAI MR14-04 Leg1 Doppler Radar

Last Modified: 2016-11-23

ReadMe

Cruise ID: [MR14-04 Leg1](#)

Doppler Radar: Raw

Data Policy: [JAMSTEC](#)

Observation Items: Reflectivity, Doppler velocity

Science Keywords:

ATMOSPHERE	> PRECIPITATION
ATMOSPHERE	> CLOUDS
ATMOSPHERE	> ATMOSPHERIC WINDS
SPECTRAL/ENGINEERING	> RADAR
SPECTRAL/ENGINEERING	> RADAR
SPECTRAL/ENGINEERING	> RADAR
	> DOPPLER VELOCITY
	> RADAR
	REFLECTIVITY

Cruise Report

http://www.godac.jamstec.go.jp/catalog/data/doc_catalog/media/MR14-04_leg1-2_all.pdf

For Using Data

Principal Investigator

Data Management Office

Use Constraints

See [Terms and Conditions](#) about constrain of use.

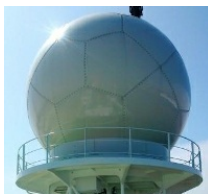
Data Citation

See [Terms and Conditions](#) about data citation.

Instrument

Instrument:

Doppler radar (MR14-04 Leg1 -)



Specifications

Doppler radar

Manufacturer/model:	Toshiba Co., Japan/ TW4419A
Pulse configuration :	Using pulse-compression
Frequency:	5370MHz (C-band)
Transmitter:	Solid-state transmitter
Polarimetry:	Horizontal and vertical
Peak power:	6kW(H) + 6kW(V)
Antenna diameter	4m
Beam angle:	1.0degree
Location (from sea surface):	24m (center position of antenna)

Inertial navigation system

Manufacturer/model:	iXBlue SAS, France / PHINS
Location (from sea surface):	21m

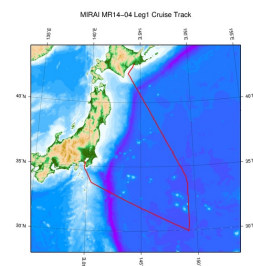
Parameter

In this cruise, the parameter was changed accordingly for system test and adjustment.

About this data

If you need the raw data set, please refer to "Contact Us" above.

Related Information



MR14-04 Leg1

Ship Name: MIRAI
Period: 2014-07-08 - 2014-07-15
Chief Scientist: Hiroshi Uchida (JAMSTEC)
Project Name: [POST-WOCE Hydrography]
Proposal ▶ Collaborative study on the zonal distribution of dissolved organic carbon in the far North Pacific
Title:

[Enlarge Image](#)

Update History

2016-11-23	An observation data was registerd.
------------	------------------------------------

[Site Policy](#)
[Privacy Policy](#)
[Application for Data and Samples](#)
[Data Policy](#)

What's New
[Update History](#)
[Feeds](#)

[Publication List](#)
[Amount of Public Info.](#)

Data
[Map Search](#)
[Data Tree](#)
[Detailed Search](#)

Ships
[NATSUSHIMA](#)
[KAIYO](#)
[YOKOSUKA](#)
[MIRAI](#)
[KAIREI](#)
[CHIKYU](#)
[KAIMEI](#)
[SHINSEI MARU](#)
[HAKUHO MARU](#)

Submersibles
[KAIKO](#)
[SHINKAI 2000](#)
[SHINKAI 6500](#)
[DEEP TOW](#)
[HYPER-DOLPHIN](#)
[URASHIMA](#)
[YOKOSUKA DEEP TOW](#)
[6K Camera DEEP TOW](#)
[6K Sonar DEEP TOW](#)
[KM-ROV](#)
[POWER GRAB SAMPLER \(SHELL\)](#)
[POWER GRAB SAMPLER \(CLOW\)](#)
[BMS](#)

Cruise ID:

Go to a Dive Information

Dive ID:

Copyright 2011 Japan Agency for Marine-Earth Science and Technology



MIRAI MR14-04 Leg1 Doppler Radar

Last Modified: 2016-11-23

ReadMe

Cruise ID: [MR14-04 Leg1](#)

Doppler Radar: Raw

Data Policy: [JAMSTEC](#)

Observation Items: Reflectivity, Doppler velocity

Science Keywords:

ATMOSPHERE	> PRECIPITATION	
ATMOSPHERE	> CLOUDS	
ATMOSPHERE	> ATMOSPHERIC WINDS	
SPECTRAL/ENGINEERING	> RADAR	> DOPPLER VELOCITY
SPECTRAL/ENGINEERING	> RADAR	> RADAR REFLECTIVITY

Cruise Report

http://www.godac.jamstec.go.jp/catalog/data/doc_catalog/media/MR14-04_leg1-2_all.pdf

For Using Data

Principal Investigator

Data Management Office

Use Constraints

See [Terms and Conditions](#) about constrain of use.

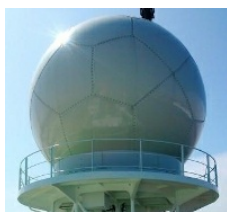
Data Citation

See [Terms and Conditions](#) about data citation.

Instrument

Instrument:

Doppler radar (MR14-04 Leg1 -)



Specifications

Doppler radar

Manufacturer/model:	Toshiba Co., Japan/ TW4419A
Pulse configuration :	Using pulse-compression
Frequency:	5370MHz (C-band)
Transmitter:	Solid-state transmitter
Polarimetry:	Horizontal and vertical
Peak power:	6kW(H) + 6kW(V)
Antenna diameter	4m
Beam angle:	1.0degree
Location (from sea surface):	24m (center position of antenna)

Inertial navigation system

Manufacturer/model:	iXBlue SAS, France / PHINS
Location (from sea surface):	21m

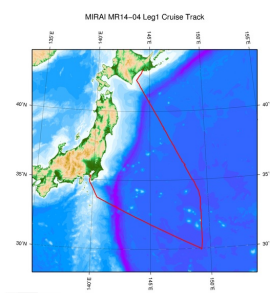
Parameter

In this cruise, the parameter was changed accordingly for system test and adjustment.

About this data

If you need the raw data set, please refer to "Contact Us" above.

Related Information



MR14-04 Leg1

Ship Name: MIRAI
Period: 2014-07-08 - 2014-07-15
Chief Scientist: Hiroshi Uchida (JAMSTEC)
Project Name: [POST-WOCE Hydrography]
Proposal ▶ Collaborative study on the zonal distribution of dissolved organic carbon in the far North Pacific
Title:

[Enlarge Image](#)

Update History	
2016-11-23	An observation data was registerd.

JAMSTEC

[Site Policy](#)
[Privacy Policy](#)
[Application for Data and Samples](#)
[Data Policy](#)

[What's New](#)
[Update History](#)
[Feeds](#)

Lists

[Publication List](#)
[Amount of Public Info.](#)

Data

[Map Search](#)
[Data Tree](#)
[Detailed Search](#)

Information of the Ships

[NATSUSHIMA](#)
[KAIYO](#)
[YOKOSUKA](#)
[MIRAI](#)
[KAIREI](#)
[CHIKYU](#)
[KAIMEI](#)
[SHINSEI MARU](#)
[HAKUHO MARU](#)

Information of the Submersibles

[KAIKO](#)
[SHINKAI 2000](#)
[SHINKAI 6500](#)
[DEEP TOW](#)
[HYPER-DOLPHIN](#)
[URASHIMA](#)
[YOKOSUKA DEEP TOW](#)
[6K Camera DEEP TOW](#)
[6K Sonar DEEP TOW](#)
[KM-ROV](#)
[POWER GRAB SAMPLER \(SHELL\)](#)
[POWER GRAB SAMPLER \(CLOW\)](#)
[BMS](#)

Go to a Cruise Information

Cruise ID:

Go to a Dive Information

Dive ID:

Copyright 2011 Japan Agency for Marine-Earth Science and Technology



JAMSTEC

国立研究開発法人
 海洋研究開発機構
 JAPAN AGENCY FOR MARINE-EARTH SCIENCE AND TECHNOLOGY