

## KAIMEI KM17-04 Sea-surface Photosynthetically Active Radiation (PAR)

Last Modified: 2017-11-17

[ReadMe](#) [Observation Data](#) [Data Format](#)

Cruise ID: [KM17-04](#)

Sea-surface Photosynthetically Active Radiation (PAR) : Raw

Data Policy: [JAMSTEC](#)

Observation Items: PAR

Science Keywords:

OCEANS > OCEAN OPTICS > PHOTOSYNTHETICALLY ACTIVE RADIATION

### For Using Data

#### Principal Investigator

Data Management Office

#### Use Constraints

See [Terms and Conditions](#) about constrain of use.

#### Data Citation

See [Terms and Conditions](#) about data citation.

### Period (UTC)

2017-05-04 04:15 – 2017-05-10 00:00

### Instrument

Instrument:

Surface Photosynthetically available radiation (PAR)



### Overview

Photosynthetically available radiation (PAR) and ultraviolet irradiance (6 wavelength) in the air were acquired by the radiometer PUV-2510, which was set up on foremast.

### Specifications

Manufacturer: Biospherical Instruments Inc.  
Type: PUV-2510  
Logging rate: 1 [second]  
Location: Foremast (22m from the sea surface)

[PAR]

Measurement wavelength: 400 - 700 [nm]

[Ultraviolet irradiane]

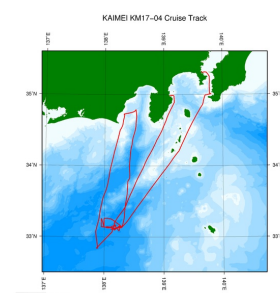
Measurement wavelength: 305, 313, 320, 340, 380, 395 [nm]

### Note

File naming rule for PAR\_YYYYMMDD.txt.

PAR\_ : Fixed as 'PAR\_'  
YYYY : Recording start Year (UTC)  
MM : Recording start month (UTC)  
DD : Recording start day (UTC)

### Related Information



 [Enlarge Image](#)

#### [KM17-04](#)

Ship Name: KAIMEI  
Period: 2017-05-04 - 2017-05-10  
Chief Scientist: Katsuhisa Maeno (JAMSTEC)

### Update History

2017-11-17 An observation data was registerd.

JAMSTEC  
Site Policy  
Privacy Policy  
Application for Data and Samples  
Data Policy

What's New  
Update History  
Feeds

Lists  
Publication List  
Amount of Public Info.

Data  
Map Search  
Data Tree  
Detailed Search

Information of the Ships  
NATSUSHIMA  
KAIYO  
YOKOSUKA  
MIRAI  
KAIREI  
CHIKYU  
KAIMEI  
SHINSEI MARU  
HAKUHO MARU

Information of the Submersibles  
KAIKO  
SHINKAI 2000  
SHINKAI 6500  
DEEP TOW  
HYPER-DOLPHIN  
URASHIMA  
YOKOSUKA DEEP TOW  
6K Camera DEEP TOW  
6K Sonar DEEP TOW  
KM-ROV  
POWER GRAB SAMPLER (SHELL)  
POWER GRAB SAMPLER (CLOW)  
BMS

Go to a Cruise Information

Cruise ID:

Go to a Dive Information

Dive ID:

Copyright 2011 Japan Agency for Marine-Earth Science and Technology



**JAMSTEC** 国立研究開発法人  
海洋研究開発機構  
JAPAN AGENCY FOR MARINE-EARTH SCIENCE AND TECHNOLOGY

## KAIMEI KM17-04 Sea-surface Photosynthetically Active Radiation (PAR)

Last Modified: 2017-11-17

[ReadMe](#) [Observation Data](#) [Data Format](#)

Cruise ID: [KM17-04](#)

Sea-surface Photosynthetically Active Radiation (PAR) Raw

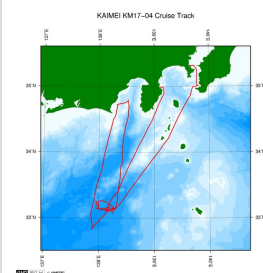
Data Policy: [JAMSTEC](#)

### Sea-surface PAR(KAIMEI)

Comma Separated Value

Column No.	Content	Remarks
1	DATE	Year, Month Day [YYYYMMDD]
2	TIME	Hour, Minute, Second [hhmmss]
3	LATITUDE	Latitude [dd-mm.mmmmmN(S)]
4	LONGITUDE	Longitude [ddd-mm.mmmmmE(W)]
5	PAR	PAR ( Variable length, Floating-point, Exponential Form) [microEinsteins/cm <sup>2</sup> /sec]
6	UV(305nm)	Ultraviolet Irradiance;305nm (Variable length, Floating-point, Exponential Form) [microW/cm <sup>2</sup> /nm]
5	UV(313nm)	Ultraviolet Irradiance;313nm (Variable length, Floating-point, Exponential Form) [microW/cm <sup>2</sup> /nm]
6	UV(320nm)	Ultraviolet Irradiance;320nm (Variable length, Floating-point, Exponential Form) [microW/cm <sup>2</sup> /nm]
7	UV(340nm)	Ultraviolet Irradiance;340nm (Variable length, Floating-point, Exponential Form) [microW/cm <sup>2</sup> /nm]
8	UV(380nm)	Ultraviolet Irradiance;380nm (Variable length, Floating-point, Exponential Form) [microW/cm <sup>2</sup> /nm]
9	UV(395nm)	Ultraviolet Irradiance;395nm (Variable length, Floating-point, Exponential Form) [microW/cm <sup>2</sup> /nm]

### Related Information



[Enlarge Image](#)

#### KM17-04

Ship Name: KAIMEI  
Period: 2017-05-04 - 2017-05-10  
Chief Scientist: Katsuhisa Maeno (JAMSTEC)

### Update History

2017-11-17 An observation data was registered.

JAMSTEC  
[Site Policy](#)  
[Privacy Policy](#)  
[Application for Data and Samples](#)  
[Data Policy](#)  
**What's New**  
[Update History](#)  
[Feeds](#)

**Lists**  
[Publication List](#)  
[Amount of Public Info.](#)  
**Data**  
[Map Search](#)  
[Data Tree](#)  
[Detailed Search](#)

**Information of the Ships**  
[NATSUSHIMA](#)  
[KAIYO](#)  
[YOKOSUKA](#)  
[MIRAI](#)  
[KAIREI](#)  
[CHIKYU](#)  
[KAIMEI](#)  
[SHINSEI MARU](#)  
[HAKUHO MARU](#)

**Information of the Submersibles**  
[KAIKO](#)  
[SHINKAI 2000](#)  
[SHINKAI 6500](#)  
[DEEP TOW](#)  
[HYPER-DOLPHIN](#)  
[URASHIMA](#)  
[YOKOSUKA DEEP TOW](#)  
[6K Camera DEEP TOW](#)  
[6K Sonar DEEP TOW](#)  
[KM-ROV](#)  
[POWER GRAB SAMPLER \(SHELL\)](#)  
[POWER GRAB SAMPLER \(CLOW\)](#)  
[BMS](#)

#### Go to a Cruise Information

Cruise ID:

#### Go to a Dive Information

Dive ID:

## KAIMEI KM17-04 Sea-surface Photosynthetically Active Radiation (PAR)

Last Modified: 2017-11-17

[ReadMe](#) [Observation Data](#) [Data Format](#)

Cruise ID: [KM17-04](#)

Sea-surface Photosynthetically Active Radiation (PAR) : Raw

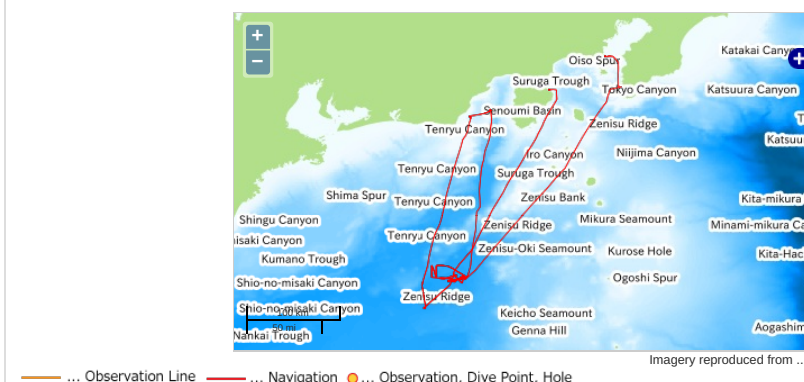
Data Policy: [JAMSTEC](#)

Observation Items: PAR

Science Keywords:

OCEANS > OCEAN OPTICS > PHOTOSYNTHETICALLY ACTIVE RADIATION

### Observation Map

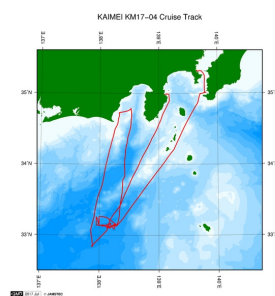


### Data List

#### File names

☐ PAR\_20170504.txt  
☐ PAR\_20170505.txt  
☐ PAR\_20170506.txt  
☐ PAR\_20170507.txt  
☐ PAR\_20170508.txt  
☐ PAR\_20170509.txt

### Related Information



[Enlarge Image](#)

#### KM17-04

Ship Name: KAIMEI  
 Period: 2017-05-04 - 2017-05-10  
 Chief Scientist: Katsuhisa Maeno (JAMSTEC)

### Update History

2017-11-17 An observation data was registered.

JAMSTEC  
 Site Policy  
 Privacy Policy  
 Application for Data and Samples  
 Data Policy  
 What's New  
 Update History  
 Feeds

Lists  
 Publication List  
 Amount of Public Info.  
 Data  
 Map Search  
 Data Tree  
 Detailed Search

Information of the Ships  
 NATSUSHIMA  
 KAIYO  
 YOKOSUKA  
 MIRAI  
 KAIREI  
 CHIKYU  
 KAIMEI  
 SHINSEI MARU  
 HAKUHO MARU

Information of the Submersibles  
 KAIKO  
 SHINKAI 2000  
 SHINKAI 6500  
 DEEP TOW  
 HYPER-DOLPHIN  
 URASHIMA  
 YOKOSUKA DEEP TOW  
 6K Camera DEEP TOW  
 6K Sonar DEEP TOW  
 KM-ROV  
 POWER GRAB SAMPLER (SHELL)  
 POWER GRAB SAMPLER (CLOW)  
 BMS

#### Go to a Cruise Information

Cruise ID:

#### Go to a Dive Information

Dive ID:

