

MIRAI MR99-K01 Bottle Sampling Water Chemical Analysis

Last Modified: 2015-05-29

[ReadMe](#) [Observation Data](#) [Data Format](#) [Quality Information](#)

Cruise ID: [MR99-K01](#)

Bottle Sampling Water Chemical Analysis: Processed (DMO)-QCed

Data Policy: [JAMSTEC](#)

Observation Items: Temperature, Salinity, Dissolved oxygen, Density

Science Keywords:

OCEANS > OCEAN CHEMISTRY > OXYGEN
OCEANS > OCEAN CHEMISTRY > SALINITY
OCEANS > OCEAN TEMPERATURE > WATER TEMPERATURE
OCEANS > SALINITY/DENSITY > SALINITY

Cruise Report

http://www.godac.jamstec.go.jp/catalog/data/doc_catalog/media/MR99-K01_all.pdf

[For Using Data](#)

Principal Investigator

CTDTMP : Yoshifumi Kuroda (JAMSTEC)

CTDSAL : Yoshifumi Kuroda (JAMSTEC)

SALNTY : Yoshifumi Kuroda (JAMSTEC)

CTDOXY : Yoshifumi Kuroda (JAMSTEC)

Use Constraints

See [Terms and Conditions](#) about constrain of use.

Data Citation

See [Terms and Conditions](#) about data citation.

Instrument

Instrument:

Salinity measurement system



Notice

- In many other cruises unit of CTDOXY and OXYGEN is umol/kg, however in this cruise they are measured in ml/l.

Information on CTD data

(1) Temperature sensor

Model : SBE3, Sea-Bird Electronics, Inc.

Measurement range : -5.0 to +35degC

Accuracy : 0.001degC

Resolution : 0.0002degC

(2) Salinity sensor

Model : SBE4, Sea-Bird Electronics, Inc.

Measurement range : 0.0 to 7S/m

Accuracy : 0.0003S/m

Resolution : 0.00004S/m

(3) Pressure sensor

Model : SBE9plus, Sea-Bird Electronics, Inc.

Measurement range : up to 10500m

Accuracy : 0.015%F.S.

Resolution : 0.001%F.S.

(4) DO sensor

Model : SBE13, Sea-Bird Electronics, Inc.

Measurement range : 0-15ml/l(120% of surface saturation)

Accuracy : 0.1ml/l(2% of saturation)

Resolution : 0.01ml/l

Information on Chemical and Biological data

1. Salinity

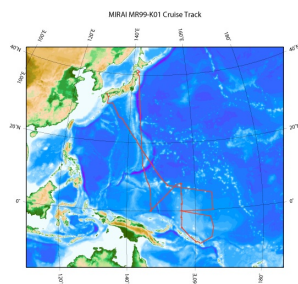
(1) Instruments: Autosol salinometer model 8400B (Guildline Instruments Ltd.)

(2) Methods : -

(3) Precision : -

(4) Reference Material/Calibration: IAPSO Standard Sea Water batch P133(Ocean Scientific International Ltd.)

Related Information



 [Enlarge Image](#)

MR99-K01

Ship Name: MIRAI

Period: 1999-02-07 - 1999-03-31

Chief Scientist: Yoshifumi Kuroda (JAMSTEC)

Project Name: [Tropical Ocean Climate Study (TOCS)]

Update History

2015-05-29	An observation data was registerd.
2013-08-09	An observation data was registerd.
2013-01-25	An observation data was registerd.

JAMSTEC

[Site Policy](#)
[Privacy Policy](#)
[Application for Data and Samples](#)
[Data Policy](#)

[What's New](#)
[Update History](#)
[Feeds](#)

Lists

[Publication List](#)
[Amount of Public Info.](#)

[Data](#)
[Map Search](#)
[Data Tree](#)
[Detailed Search](#)

Information of the Ships

[NATSUSHIMA](#)
[KAIYO](#)
[YOKOSUKA](#)
[MIRAI](#)
[KAIREI](#)
[CHIKYU](#)
[KAIMEI](#)
[SHINSEI MARU](#)
[HAKUHO MARU](#)

Information of the Submersibles

[KAIKO](#)
[SHINKAI 2000](#)
[SHINKAI 6500](#)
[DEEP TOW](#)
[HYPER-DOLPHIN](#)
[URASHIMA](#)
[YOKOSUKA DEEP TOW](#)
[6K Camera DEEP TOW](#)
[6K Sonar DEEP TOW](#)
[KM-ROV](#)
[POWER GRAB SAMPLER \(SHELL\)](#)
[POWER GRAB SAMPLER \(CLOW\)](#)
[BMS](#)

Go to a Cruise Information

Cruise ID:

Go to a Dive Information

Dive ID:

Copyright 2011 Japan Agency for Marine-Earth Science and Technology



JAMSTEC 国立研究開発法人
海洋研究開発機構
JAPAN AGENCY FOR MARINE-EARTH SCIENCE AND TECHNOLOGY

MIRAI MR99-K01 Bottle Sampling Water Chemical Analysis

Last Modified: 2015-05-29

[ReadMe](#) [Observation Data](#) [Data Format](#) [Quality Information](#)

 Cruise ID: [MR99-K01](#)

Bottle Sampling Water Chemical Analysis: Processed (DMO)-QCed

 Data Policy: [JAMSTEC](#)

Exchange Format

Provided in the Exchange Format of CCHDO (CLIVAR and Carbon Hydrographic Data Office).

Please see the following link for details of Exchange Format.

[CCHDO | CLIVAR & Carbon Hydrographic Data Office](#)

Format Information

Column No.	Column Heading Mnemonic	Units Mnemonic	Reporting Precision FORTRAN Format	Comments
1	EXPCODE		A14	Expedition code
2	SECT		A6	For WOCE data the WHP section identifier
3	STNNBR		6	Station number
4	CASTNO		I3	Cast number
5	SAMPNO		A7	Sample number
6	BTLNBR		A7	Bottle identification number
7	BTLNBR_FLAG_W		I1	Bottle quality flag
8	DATE		I8	Cast date(UTC)
9	TIME	UTC	I4	Cast time (UTC)
10	LATITUDE	DEG	F8.3	LATITUDE
11	LONGITUDE	DEG	F9.3	LONGITUDE
12	DEPTH	M	I5	Reported depth to bottom.
13	CTDPRS	DBAR	F9.1	Pressure
14	CTDPRS_FLAG_W		I1	Quality flag for CTD data
15	CTDTMP	ITS-90	F9.4	Temperature
16	CTDTMP_FLAG_W		I1	Quality flag for CTD data
17	CTDSAL	PSS-78	F9.4	CTD Salinity sensor
18	CTDSAL_FLAG_W		I1	Quality flag for CTD data
19	SALNTY	PSS-78	F9.4	Salinity
20	SALNTY_FLAG_W		I1	Quality flags for water samples
21	CTDOXY	ML/L	F9.2	CTD Oxygen sensor
22	CTDOXY_FLAG_W		I1	Quality flag for CTD data
23	SIG0	KG/CUM	F9.4	Density

ODV Format

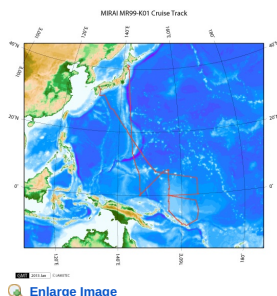
Please see the following link for details of ODV Format and ODV Software.

[Ocean Data View \(ODV\)](#)

Format Information

Column No.	Column Heading	Comments
1	Cruise	Cruise Label
2	Station	Station number_Cast number
3	Type	Station type
4	mon/day/yr	Cast date(UTC)
5	hh:mm	Cast time (UTC)
6	Latitude [degrees_north]	LATITUDE
7	Longitude [degrees_east]	LONGITUDE
8	Bot. Depth [m]	Reported depth to bottom.
9	CTDDPT[M]	Depth(Calculate from CTDPRS and LATITUDE)
10	QF	Quality flag for CTD data
11	CTDPRS[DBAR]	Pressure
12	QF	Quality flag for CTD data
13	CTDTMP[ITS-90]	Temperature
14	QF	Quality flag for CTD data
15	CTDSAL[PSS-78]	CTD Salinity sensor
16	QF	Quality flag for CTD data
17	SALNTY[PSS-78]	Salinity
18	QF	Quality flags for water samples
19	CTDOXY[ML/L]	CTD Oxygen sensor
20	QF	Quality flag for CTD data
21	SIG0[KG/CUM]	Density
22	QF	Quality flag for CTD data
23	SAMPNO	Sample number
24	QF	Bottle quality flag

Related Information



[Enlarge Image](#)

MR99-K01

Ship Name: MIRAI
Period: 1999-02-07 - 1999-03-31
Chief Scientist: Yoshifumi Kuroda (JAMSTEC)
Project Name: [Tropical Ocean Climate Study (TOCS)]

Update History

2015-05-29	An observation data was registered.
2013-08-09	An observation data was registered.
2013-01-25	An observation data was registered.

JAMSTEC

[Site Policy](#)
[Privacy Policy](#)
[Application for Data and Samples](#)
[Data Policy](#)

[What's New](#)
[Update History](#)
[Feeds](#)

Lists

[Publication List](#)
[Amount of Public Info.](#)

Data

[Map Search](#)
[Data Tree](#)
[Detailed Search](#)

Information of the Ships

[NATSUSHIMA](#)
[KAIYO](#)
[YOKOSUKA](#)
[MIRAI](#)
[KAIREI](#)
[CHIKYU](#)
[KAIMEI](#)
[SHINSEI MARU](#)
[HAKUHO MARU](#)

Information of the Submersibles

[KAIKO](#)
[SHINKAI 2000](#)
[SHINKAI 6500](#)
[DEEP TOW](#)
[HYPER-DOLPHIN](#)
[URASHIMA](#)
[YOKOSUKA DEEP TOW](#)
[6K Camera DEEP TOW](#)
[6K Sonar DEEP TOW](#)
[KM-ROV](#)
[POWER GRAB SAMPLER \(SHELL\)](#)
[POWER GRAB SAMPLER \(CLOW\)](#)
[BMS](#)

Go to a Cruise Information

Cruise ID:

Go to a Dive Information

Dive ID:

Copyright 2011 Japan Agency for Marine-Earth Science and Technology



JAMSTEC
JAPAN AGENCY FOR MARINE-EARTH SCIENCE AND TECHNOLOGY

国立研究開発法人
海洋研究開発機構

MIRAI MR99-K01 Bottle Sampling Water Chemical Analysis

Last Modified: 2015-05-29

[ReadMe](#) [Observation Data](#) [Data Format](#) [Quality Information](#)

Cruise ID: [MR99-K01](#)

Bottle Sampling Water Chemical Analysis: Processed (DMO)-QCed

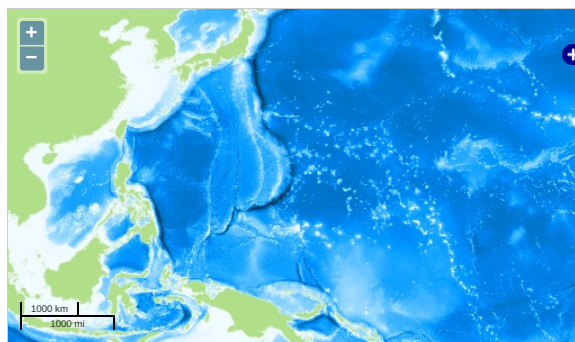
Data Policy: [JAMSTEC](#)

Observation Items: Temperature, Salinity, Dissolved oxygen, Density

Science Keywords:

OCEANS > OCEAN CHEMISTRY > OXYGEN
OCEANS > OCEAN CHEMISTRY > SALINITY
OCEANS > OCEAN TEMPERATURE > WATER TEMPERATURE
OCEANS > SALINITY/DENSITY > SALINITY

Observation Map



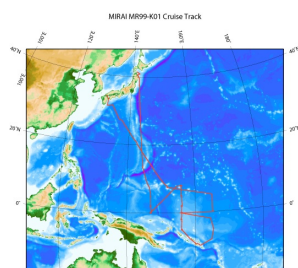
Imagery reproduced from ...

... Observation Line ... Navigation ... Observation, Dive Point, Hole

Data List

☐ File names
☐ MR99K0100_ex_bot.csv
☐ MR99K0100_odv_bot.txt

Related Information



[Enlarge Image](#)

MR99-K01

Ship Name: MIRAI
Period: 1999-02-07 - 1999-03-31
Chief Scientist: Yoshifumi Kuroda (JAMSTEC)
Project Name: [Tropical Ocean Climate Study (TOCS)]

Update History

2015-05-29	An observation data was registered.
2013-08-09	An observation data was registered.
2013-01-25	An observation data was registered.

JAMSTEC
Site Policy
Privacy Policy
Application for Data and Samples
Data Policy
What's New
Update History
Feeds

Lists
Publication List
Amount of Public Info.
Data
Map Search
Data Tree
Detailed Search

Information of the Ships
NATSUSHIMA
KAIO
YOKOSUKA
MIRAI
KAIREI
CHIKYU
KAIMEI
SHINSEI MARU
HAKUHO MARU

Information of the Submersibles
KAIO
SHINKAI 2000
SHINKAI 6500
DEEP TOW
HYPER-DOLPHIN
URASHIMA
YOKOSUKA DEEP TOW
6K Camera DEEP TOW
6K Sonar DEEP TOW
KM-ROV
POWER GRAB SAMPLER (SHELL)
POWER GRAB SAMPLER (CLOW)
BMS

Go to a Cruise Information

Cruise ID:

Go to a Dive Information

Dive ID: