

## KAIMEI KM16-06 Cloud Ceiling

Last Modified: 2018-08-15

[ReadMe](#) [Observation Data](#) [Data Format](#)

Cruise ID: **KM16-06**

Cloud Ceiling: Raw

Data Policy: **JAMSTEC**

Observation Items: Cloud base height

Science Keywords:

ATMOSPHERE > CLOUDS > CLOUD  
BASE

### **i** For Using Data

#### Principal Investigator

Data Management Office

#### Use Constraints

See [Terms and Conditions](#) about constrain of use.

#### Data Citation

See [Terms and Conditions](#) about data citation.

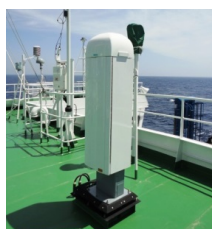
### Period (UTC)

2016-08-02 00:00 – 2016-08-15 00:40

### Instrument

Instrument:

Ceiliometer



### Overview

Ceiliometer is the system that measures cloud base height by laser pulse emitted vertically.

Up to three levels of cloud base can be detected by measuring the change of strength of backscatter signal.

And the cloud base height is calculated from the elapsed time from laser pulse emission to backscatter detection.

In case the cloud base is obscured, it measures the vertical visibility.

### System

Manufacturer: Vaisala Inc.  
Type: CL51  
Serial number: L1220347  
Measurement range: up to 15000m (Backscatter measurement)  
up to 13000m (Cloud detection)  
Resolution: 10m  
Sampling rate: 06-120 seconds available (36sec as default)  
Accuracy: +/- 5m (Distance measurement accuracy to fixed object)  
Location: Compass (17 meters high from sea surface)  
Recording software: CL-VIEW Ver2.00

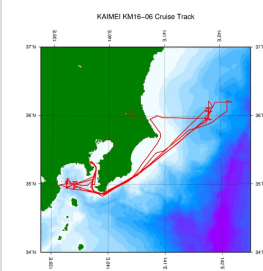
### Note

(1) File naming rule for AYMMDDHH.DAT(CL-VIEW Ver2.00).

A : Fixed as 'A'  
Y : Year in 1 digit  
MM : Recording start month (UTC)  
DD : Recording start day (UTC)  
HH : Recording start time (UTC)

(2) Adjustment for the height : No sea surface level adjustment is applied to the raw data.

### Related Information



#### **KM16-06**

Ship Name: KAIMEI  
Period: 2016-08-02 - 2016-08-15  
Chief Scientist: Katsuhisa Maeno (JAMSTEC)

[Enlarge Image](#)

### Update History

2018-08-15 An observation data was registered.

JAMSTEC  
Site Policy  
Privacy Policy  
Application for Data and Samples  
Data Policy  
What's New  
Update History  
Feeds

Lists  
Publication List  
Amount of Public Info.  
Data  
Map Search  
Data Tree  
Detailed Search

Information of the Ships  
NATSUSHIMA  
KAIYO  
YOKOSUKA  
MIRAI  
KAIREI  
CHIKYU  
KAIMEI  
SHINSEI MARU  
HAKUHO MARU

Information of the Submersibles  
KAIKO  
SHINKAI 2000  
SHINKAI 6500  
DEEP TOW  
HYPER-DOLPHIN  
URASHIMA  
YOKOSUKA DEEP TOW  
6K Camera DEEP TOW  
6K Sonar DEEP TOW  
KM-ROV  
POWER GRAB  
SAMPLER (SHELL)  
POWER GRAB  
SAMPLER (CLOW)  
BMS

Go to a Cruise Information

Cruise ID:

Go to a Dive Information

Dive ID:

Copyright 2011 Japan Agency for Marine-Earth Science and Technology



## KAIMEI KM16-06 Cloud Ceiling

Last Modified: 2018-08-15

[ReadMe](#) [Observation Data](#) [Data Format](#)

Cruise ID: **KM16-06**

Cloud Ceiling: Raw

Data Policy: [JAMSTEC](#)

### Ceiling Raw

The record length of the data file is 56 bytes.

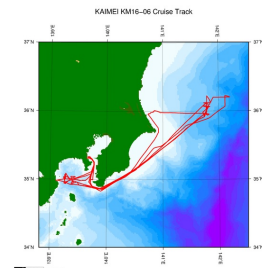
| No. | Column  | Content  | Format   | Remarks   |
|-----|---------|--|----------|---|
| 1   | 1 - 8   | Date   | i4,i2,i2 | YYYYMMDD (UTC)  |
| 2   | 10 - 15 | Time   | i2,i2,i2 | hhmmss (UTC)  |
| 3   | 17 - 19 | Operating software   | a3       | 'CT0' : CT-VIEW<br>'CL0' : CL-VIEW  |
| 4   | 20 - 21 | Software version   | i2       | Version of operating software   |
| 5   | 22      | Data status  | i1       | 1: Cloud base height/vertical visibility data<br>2: Cloud base height/vertical visibility, backscatter signal<br>6: Cloud base height/vertical visibility, cloud amount/height of cloud layer<br>7: Cloud base height/vertical visibility, backscatter signal, cloud amount/height of cloud layer |
| 6   | 23      | Spare character  | a1       |   |
| 7   | 25      | Detection status   | i1       | 0: Clear<br>1: One cloud base detected<br>2: Two cloud bases detected<br>3: Three cloud bases detected<br>4: Full obscuration determined but no cloud base detected<br>5: Some obscuration detected but determined to transparent   |
| 8   | 26      | Warning and alarm information                              | a1       | 0: Self-check OK<br>W: At least one warning active, no alarms<br>A: At least one alarm active<br>See No.12:observation information  |
| 9   | 28 - 32 | Lowest cloud base height or vertical visibility            | i5       | In the case of detection status is 1,2 or 3: Lowest cloud base height<br>In the case of detection status is 4: Calculation of vertical visibility<br>In the case of detection status is 0 or 5: /////<br>Unit: See No.12:observation information  |
| 10  | 34 - 38 | Second lowest cloud base height or highest signal detected | i5       | In the case of detection status is 2 or 3: Second lowest cloud base height<br>In the case of detection status is 4: Maximum height that a signal was detected<br>In the case of detection status is 0,1 or 5: /////<br>Unit: See No.12:observation information                                    |
| 11  | 40 - 44 | Highest cloud base height                                  | i5       | In the case of detection status is 3: Highest cloud base height<br>In the case of detection status is 0,1,2,4,5: /////<br>Unit: See No.12:observation information   |
| 12  | 46 - 53 | Observation information                                    | a8       | *1  |
| 13  | 55 - 56 | Terminator   | a2       | CR+LF   |

\*1: Observation information

The information is presented using 8 bytes characters. Each character, indicated in hexadecimal character, shows the following meanings;

| Byte | Hexadecimal character (0:on, -:off) |   |   |   |   |   |   |   |   |   |   |   |   |   |   |   | Message(A:alarm, W:warning)              |
|------|-------------------------------------|---|---|---|---|---|---|---|---|---|---|---|---|---|---|---|--|
|      | 0                                   | 1 | 2 | 3 | 4 | 5 | 6 | 7 | 8 | 9 | A | B | C | D | E | F |  |
| 1    | -                                   | - | - | - | - | - | - | 0 | 0 | 0 | 0 | 0 | 0 | 0 | 0 | 0 | Laser temperature shut-off(A)            |
|      | -                                   | - | - | 0 | 0 | 0 | 0 | - | - | - | 0 | 0 | 0 | 0 | 0 | 0 | Laser failure(A)                         |
|      | -                                   | 0 | 0 | - | 0 | 0 | 0 | - | 0 | 0 | - | 0 | 0 | - | 0 | 0 | Receiver failure(A)                      |
|      | 0                                   | - | 0 | - | 0 | - | 0 | - | 0 | - | 0 | - | 0 | - | 0 | 0 | Voltage failure(A)                       |
| 2    | -                                   | - | - | - | - | - | - | 0 | 0 | 0 | 0 | 0 | 0 | 0 | 0 | 0 | Spare(A)                                 |
|      | -                                   | - | - | 0 | 0 | 0 | 0 | - | - | 0 | 0 | 0 | 0 | 0 | 0 | 0 | Spare(A)                                 |
|      | -                                   | 0 | 0 | - | 0 | 0 | 0 | - | 0 | 0 | - | 0 | 0 | - | 0 | 0 | Spare(A)                                 |
|      | 0                                   | - | 0 | - | 0 | - | 0 | - | 0 | - | 0 | - | 0 | - | 0 | 0 | Spare(A)                                 |
| 3    | -                                   | - | - | - | - | - | - | 0 | 0 | 0 | 0 | 0 | 0 | 0 | 0 | 0 | Windows contaminated(W)                  |
|      | -                                   | - | - | 0 | 0 | 0 | 0 | - | - | - | 0 | 0 | 0 | 0 | 0 | 0 | Battery low(W)                           |
|      | -                                   | 0 | 0 | - | 0 | 0 | 0 | - | 0 | 0 | - | 0 | 0 | - | 0 | 0 | Laser power low(W)                       |
|      | 0                                   | - | 0 | - | 0 | - | 0 | - | 0 | - | 0 | - | 0 | - | 0 | 0 | Laser temperature high or low(W)         |
| 4    | -                                   | - | - | - | - | - | - | 0 | 0 | 0 | 0 | 0 | 0 | 0 | 0 | 0 | Internal temperature high or low(W)      |
|      | -                                   | - | - | 0 | 0 | 0 | 0 | - | - | - | 0 | 0 | 0 | 0 | 0 | 0 | Voltage high or low(W)                   |
|      | -                                   | 0 | 0 | - | 0 | 0 | 0 | - | 0 | 0 | - | 0 | 0 | - | 0 | 0 | Relative Humidity is > 85%(W)            |
|      | 0                                   | - | 0 | - | 0 | - | 0 | - | 0 | - | 0 | - | 0 | - | 0 | 0 | Receiver cross-talk compensation poor(W) |
| 5    | -                                   | - | - | - | - | - | - | 0 | 0 | 0 | 0 | 0 | 0 | 0 | 0 | 0 | Blower suspect(W)                        |
|      | -                                   | - | - | 0 | 0 | 0 | 0 | - | - | - | 0 | 0 | 0 | 0 | 0 | 0 | Spare(W)                                 |
|      | -                                   | 0 | 0 | - | 0 | 0 | 0 | - | 0 | 0 | - | 0 | 0 | - | 0 | 0 | Spare(W)                                 |
|      | 0                                   | - | 0 | - | 0 | - | 0 | - | 0 | - | 0 | - | 0 | - | 0 | 0 | Spare(W)                                 |
| 6    | -                                   | - | - | - | - | - | - | 0 | 0 | 0 | 0 | 0 | 0 | 0 | 0 | 0 | Blower is ON                             |
|      | -                                   | - | - | 0 | 0 | 0 | 0 | - | - | - | 0 | 0 | 0 | 0 | 0 | 0 | Blower heater is ON                      |
|      | -                                   | 0 | 0 | - | 0 | 0 | 0 | - | 0 | 0 | - | 0 | 0 | - | 0 | 0 | Internal heater is ON                    |
|      | 0                                   | - | 0 | - | 0 | - | 0 | - | 0 | - | 0 | - | 0 | - | 0 | 0 | Units are METERS if ON , else FEET       |
| 7    | -                                   | - | - | - | - | - | - | 0 | 0 | 0 | 0 | 0 | 0 | 0 | 0 | 0 | Polling mode is ON                       |
|      | -                                   | - | - | 0 | 0 | 0 | 0 | - | - | - | 0 | 0 | 0 | 0 | 0 | 0 | Working from battery                     |
|      | -                                   | 0 | 0 | - | 0 | 0 | 0 | - | 0 | 0 | - | 0 | 0 | - | 0 | 0 | Single sequence mode is ON               |
|      | 0                                   | - | 0 | - | 0 | - | 0 | - | 0 | - | 0 | - | 0 | - | 0 | 0 | Manual settings are effective            |
| 8    | -                                   | - | - | - | - | - | - | 0 | 0 | 0 | 0 | 0 | 0 | 0 | 0 | 0 | Tilt angle is > 45 degrees               |
|      | -                                   | - | - | 0 | 0 | 0 | 0 | - | - | - | 0 | 0 | 0 | 0 | 0 | 0 | High background radiance                 |
|      | -                                   | 0 | 0 | - | 0 | 0 | 0 | - | 0 | 0 | - | 0 | 0 | - | 0 | 0 | Manual blower control                    |
|      | 0                                   | - | 0 | - | 0 | - | 0 | - | 0 | - | 0 | - | 0 | - | 0 | 0 | Spare                                    |

### Related Information



[Enlarge Image](#)

**KM16-06**  
 Ship Name: KAIMEI  
 Period: 2016-08-02 - 2016-08-15  
 Chief Scientist: Katsuhisa Maeno (JAMSTEC)

#### Update History

|            |                                     |
|------------|-------------------------------------|
| 2018-08-15 | An observation data was registered. |
|------------|-------------------------------------|

#### JAMSTEC

[Site Policy](#)  
[Privacy Policy](#)  
[Application for Data and Samples](#)  
[Data Policy](#)  
**What's New**  
[Update History](#)  
[Feeds](#)

#### Lists

[Publication List](#)  
[Amount of Public Info.](#)

#### Data

[Map Search](#)  
[Data Tree](#)  
[Detailed Search](#)

#### Information of the Ships

[NATSUSHIMA](#)  
[KAIYO](#)  
[YOKOSUKA](#)  
[MIRAI](#)  
[KAIREI](#)  
[CHIKYU](#)  
[KAIMEI](#)  
[SHINSEI MARU](#)  
[HAKUHO MARU](#)

#### Information of the Submersibles

[KAIKO](#)  
[SHINKAI 2000](#)  
[SHINKAI 6500](#)  
[DEEP TOW](#)  
[HYPER-DOLPHIN](#)  
[URASHIMA](#)  
[YOKOSUKA DEEP TOW](#)  
[6K Camera DEEP TOW](#)  
[6K Sonar DEEP TOW](#)  
[KM-ROV](#)  
[POWER GRAB](#)  
[SAMPLER \(SHELL\)](#)  
[POWER GRAB](#)  
[SAMPLER \(CLOW\)](#)  
[BMS](#)

#### Go to a Cruise Information

Cruise ID:

#### Go to a Dive Information

Dive ID:

Copyright 2011 Japan Agency for Marine-Earth Science and Technology

 **JAMSTEC** 国立研究開発法人  
 海洋研究開発機構  
 JAPAN AGENCY FOR MARINE-EARTH SCIENCE AND TECHNOLOGY

## KAIMEI KM16-06 Cloud Ceiling

Last Modified: 2018-08-15

[ReadMe](#) [Observation Data](#) [Data Format](#)

Cruise ID: **KM16-06**

Cloud Ceiling: Raw

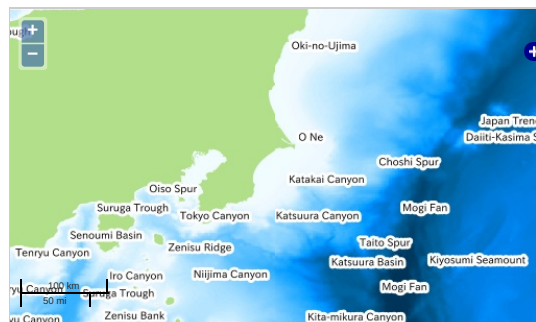
Data Policy: **JAMSTEC**

Observation Items: Cloud base height

Science Keywords:

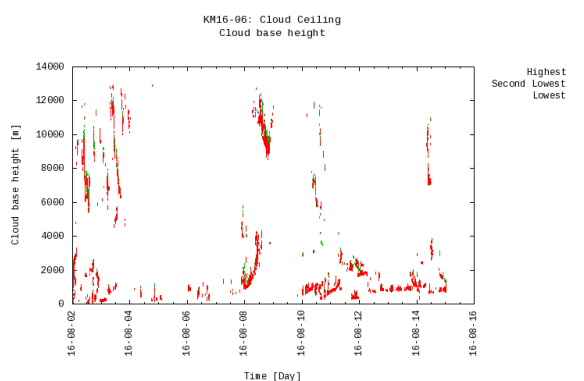
ATMOSPHERE > CLOUDS > CLOUD  
BASE

### Observation Map



— ... Observation Line — ... Navigation ● ... Observation, Dive Point, Hole

### Figures



### Data List

[Add to Basket](#)

☐ File names

☐ A6080200.DAT

☐ A6080300.DAT

☐ A6080400.DAT

☐ A6080500.DAT

☐ A6080600.DAT

☐ A6080700.DAT

☐ A6080800.DAT

☐ A6080900.DAT

☐ A6081000.DAT

☐ A6081100.DAT

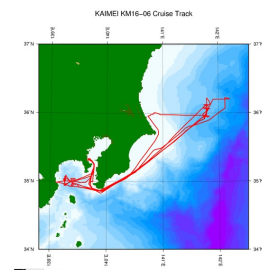
☐ A6081200.DAT

☐ A6081300.DAT

☐ A6081400.DAT

☐ A6081500.DAT

### Related Information



[Enlarge Image](#)

**KM16-06**  
Ship Name: KAIMEI  
Period: 2016-08-02 - 2016-08-15  
Chief Scientist: Katsuhisa Maeno (JAMSTEC)

#### Update History

|            |                                     |
|------------|-------------------------------------|
| 2018-08-15 | An observation data was registered. |
|------------|-------------------------------------|

#### JAMSTEC

[Site Policy](#)  
[Privacy Policy](#)  
[Application for Data and Samples](#)  
[Data Policy](#)

#### What's New

[Update History](#)  
[Feeds](#)

#### Lists

[Publication List](#)  
[Amount of Public Info.](#)

#### Data

[Map Search](#)  
[Data Tree](#)  
[Detailed Search](#)

#### Information of the Ships

[NATSUSHIMA](#)  
[KAIYO](#)  
[YOKOSUKA](#)  
[MIRAI](#)  
[KAIREI](#)  
[CHIKYU](#)  
[KAIMEI](#)  
[SHINSEI MARU](#)  
[HAKUHO MARU](#)

#### Information of the Submersibles

[KAIKO](#)  
[SHINKAI 2000](#)  
[SHINKAI 6500](#)  
[DEEP TOW](#)  
[HYPER-DOLPHIN](#)  
[URASHIMA](#)  
[YOKOSUKA DEEP TOW](#)  
[6K Camera DEEP TOW](#)  
[6K Sonar DEEP TOW](#)  
[KM-ROV](#)  
[POWER GRAB](#)  
[SAMPLER \(SHELL\)](#)  
[POWER GRAB](#)  
[SAMPLER \(CLOW\)](#)  
[BMS](#)

#### Go to a Cruise Information

Cruise ID:

#### Go to a Dive Information

Dive ID:

Copyright 2011 Japan Agency for Marine-Earth Science and Technology

 **JAMSTEC** 国立研究開発法人  
海洋研究開発機構  
JAPAN AGENCY FOR MARINE-EARTH SCIENCE AND TECHNOLOGY