

MIRAI MR08-E01 Shipboard Acoustic Doppler Current Profiler (ADCP)

Last Modified: 2016-12-16

[ReadMe](#) [Observation Data](#) [Data Format](#)

Cruise ID: [MR08-E01](#)

Shipboard Acoustic Doppler Current Profiler (ADCP): Processed (DMO)-Corrected

Data Policy: [JAMSTEC](#)

Observation Items: Depth, Absolute velocity (zonal, meridional and vertical)

Science Keywords:

OCEANS > OCEAN CIRCULATION > OCEAN CURRENTS

For Using Data

Principal Investigator

Data Management Office

Use Constraints

See [Terms and Conditions](#) about constrain of use.

Data Citation

See [Terms and Conditions](#) about data citation.

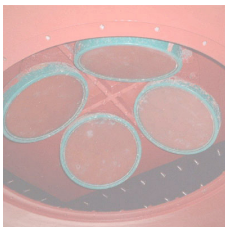
Period (UTC)

2008-03-22 00:25 – 2008-03-25 23:50

Instrument

Instrument:

Shipboard acoustic doppler current
profiler (ADCP) (- MR08-E01)



Overview

Acoustic Doppler Current Profiler (ADCP) transmits acoustic pulses from a transducer assembly. The transducers receive backscattered sounds from small particles floating with water currents. Using the Doppler shift principle, the backscattered sound data can be converted into components of water current velocity at multiple depths. The shipboard ADCP mounted on R/V MIRAI can measure the speed and direction of water currents for up to 128 layers. The dataset provided here is a 5-minute time average of absolute velocity data (i.e., water current velocity in geophysical coordinates) after various kinds of corrections. This data processing was carried out by DMO. See [here](#) for detailed correction methods.

Specifications

Manufacturer:	Teledyne RD Instruments
System:	VM75
Frequency:	76.8kHz
Configuration:	4-beam
Beam angle:	30deg
Transducer Depth:	6.5m beneath calm water line
ADCP data logger:	RDI VmDas 1.42
Ship heading	
[instrument maker/model]:	IXSEA/PHINS
Navigation	
[instrument maker/model]:	Trimble/DS4000

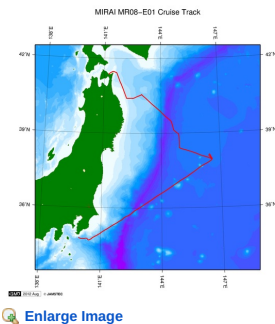
ADCP configuration

Depth range:	31 m - 655 m (bin centers)
Bin length:	16 m
Number of bins:	40
Blanking interval:	8 m
Sound speed calculation:	used transducer temperature during acquisition
Correction of the alignment error	
[corrected angle]:	0.165 deg

Need raw data?

If you would like the raw data set, please contact us from "Contact Us" above.

Related Information



MR08-E01
Ship Name: MIRAI
Period: 2008-03-22 - 2008-03-28
Chief Scientist: Hiroshi Ichikawa (JAMSTEC)

Update History

2016-12-16	An observation data was registerd.
2015-07-30	An observation data was registerd.
2014-08-02	An observation data was registerd.
2012-10-26	An observation data was registerd.

JAMSTEC

[Site Policy](#)
[Privacy Policy](#)
[Application for Data and Samples](#)
[Data Policy](#)

[What's New](#)
[Update History](#)
[Feeds](#)

Lists

[Publication List](#)
[Amount of Public Info.](#)

Data
[Map Search](#)
[Data Tree](#)
[Detailed Search](#)

Information of the Ships

[NATSUSHIMA](#)
[KAIYO](#)
[YOKOSUKA](#)
[MIRAI](#)
[KAIREI](#)
[CHIKYU](#)
[KAIMEI](#)
[SHINSEI MARU](#)
[HAKUHO MARU](#)

Information of the Submersibles

[KAIKO](#)
[SHINKAI 2000](#)
[SHINKAI 6500](#)
[DEEP TOW](#)
[HYPER-DOLPHIN](#)
[URASHIMA](#)
[YOKOSUKA DEEP TOW](#)
[6K Camera DEEP TOW](#)
[6K Sonar DEEP TOW](#)
[KM-ROV](#)
[POWER GRAB SAMPLER \(SHELL\)](#)
[POWER GRAB SAMPLER \(CLOW\)](#)
[BMS](#)

Go to a Cruise Information

Cruise ID:

Go to a Dive Information

Dive ID:

Copyright 2011 Japan Agency for Marine-Earth Science and Technology



JAMSTEC 国立研究開発法人
海洋研究開発機構
JAPAN AGENCY FOR MARINE-EARTH SCIENCE AND TECHNOLOGY

MIRAI MR08-E01 Shipboard Acoustic Doppler Current Profiler (ADCP)

Last Modified: 2016-12-16

[ReadMe](#) [Observation Data](#) [Data Format](#)

 Cruise ID: [MR08-E01](#)

Shipboard Acoustic Doppler Current Profiler (ADCP) Processed (DMO)-Corrected

 Data Policy: [JAMSTEC](#)

ADCP Corrected,Qced 3

About data format

We provide the dataset as AWI Ocean Data View format (generic spreadsheet format).

 Ocean Data View : <http://odv.awi.de/>

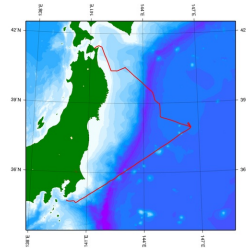
 Japanese Guide : http://www.jodc.go.jp/jodc_pub/digitalpub_j.html

Format Description (tab space separated)

Data No.	Content	Unit	Format	Remarks
1	CruiseID	i6		Cruise name
2	Station	i12		Station name set to be measurement time [YYYYMMDDhhmm]
3	Type	i1		Always "B", due to the number of data acquisition layers lower than 250-layer
4	Day	i10		Measurement day(UTC) [MM/DD/YYYY]
5	Time	i5		Measurement time [Center of average time](UTC) [hh:mm]
6	Longitude	degree	f8.4	Position at the measurement time [0 - 360]
7	Latitude	degree	f8.4	Position at the measurement time [North: +, South: -]
8	Bottom depth	m	f6.1	Set to be "0" if there is no data
9	Measurement depth	m	f7.2	Depth of measurement layer
10	Quality flag	i1		"0"=good, "4"=questionable, "8"=bad
11	Current speed (zonal)	m/sec	f8.4	5-minute average of zonal component of absolute velocity [Eastward: +] [Only good data of more than 120 count of ping correlation and more than 25 count of echo intensity were used for the average]
12	Quality flag	i1		"0"=good, "4"=questionable, "8"=bad
13	Current speed (meridional)	m/sec	f8.4	5-minute average of meridional component of absolute velocity [Northward: +] [Only good data of more than 120 count of ping correlation and more than 25 count of echo intensity were used for the average]
14	Quality flag	i1		"0"=good, "4"=questionable, "8"=bad
15	Current speed (vertical)	m/sec	f8.4	5-minute average of vertical component of absolute velocity [Upward: +] [Only good data of more than 120 count of ping correlation and more than 25 count of echo intensity were used for the average]
16	Quality flag	i1		"0"=good, "4"=questionable, "8"=bad
17	Speed of absolute velocity	m/sec	f7.4	Magnitude of absolute velocity
18	Quality flag	i1		"0"=good, "4"=questionable, "8"=bad
19	Current direction	degree	f5.1	Current direction of absolute velocity [0 to 360]
20	Quality flag	i1		"0"=good, "4"=questionable, "8"=bad
21	Error velocity	m/sec	f8.4	5-minute average of error velocity
22	Quality flag	i1		"0"=good, "4"=questionable, "8"=bad
23	Correlation	count	f5.1	5-minute average by 4-beam average correlation(send beam - received beam) [max:250count] [The data used to calculate velocity were used to average]
24	Quality flag	i1		"0"=good, "4"=questionable, "8"=bad
25	Echo Intensity	count	f5.1	5-minute average by 4-beam average echo intensity [max:120count] [The data used to calculate velocity were used to average]
26	Quality flag	i1		"0"=good, "4"=questionable, "8"=bad
27	Percentgood	%	f5.1	Rate of the good data that is used velocity calculation to the all data [0 to 100]
28	Quality flag	i1		"0"=good, "4"=questionable, "8"=bad
29	Ship's speed	m/sec	f7.4	Ship's speed by GPS
30	Quality flag	i1		"0"=good, "4"=questionable, "8"=bad
*31	Standard deviation of the Ship's Speed	m/sec	f5.2	Standard deviation of the Ship's Speed in the 5-minute
32	Quality flag	i1		"0"=good, "4"=questionable, "8"=bad
*33	Standard deviation of the Ship's Heading	degree	f6.2	Standard deviation of the Ship's Heading in the 5-minute
34	Quality flag	i1		"0"=good, "4"=questionable, "8"=bad
*35	Standard deviation of the Ship's Roll	degree	f5.2	Standard deviation of the Ship's Roll in the 5-minute
36	Quality flag	i1		"0"=good, "4"=questionable, "8"=bad
*37	Standard deviation of the ship's pitch	degree	f5.2	Standard deviation of the ship's pitch in the 5-minute
38	Quality flag	i1		"0"=good, "4"=questionable, "8"=bad

* Standard deviations of the ship's speed and the ship's heading, roll, and pitch in each 5-minute average section are also included in the dataset, since data quality of ADCP velocity might be dropped due to the high variabilities of each variables. However, DMO doesn't make any evaluation for the ADCP data by them.

MIRAI MR08-E01 Cruise Track



Enlarge Image

MR08-E01
Ship Name: MIRAI
Period: 2008-03-22 - 2008-03-28
Chief Scientist: Hiroshi Ichikawa (JAMSTEC)

Update History	
2016-12-16	An observation data was registerd.
2015-07-30	An observation data was registerd.
2014-08-02	An observation data was registerd.
2012-10-26	An observation data was registerd.

JAMSTEC
Site Policy
Privacy Policy
Application for Data and Samples
Data Policy
What's New
Update History
Feeds

Lists
Publication List
Amount of Public Info.
Data
Map Search
Data Tree
Detailed Search

Information of the Ships
NATSUSHIMA
KAIYO
YOKOSUKA
MIRAI
KAIREI
CHIKYU
KAIMEI
SHINSEI MARU
HAKUHO MARU

Information of the Submersibles
KAIKO
SHINKAI 2000
SHINKAI 6500
DEEP TOW
HYPER-DOLPHIN
URASHIMA
YOKOSUKA DEEP TOW
6K Camera DEEP TOW
6K Sonar DEEP TOW
KM-ROV
POWER GRAB
SAMPLER (SHELL)
POWER GRAB
SAMPLER (CLOW)
BMS

Go to a Cruise Information
Cruise ID:

Go to a Dive Information
Dive ID:

Copyright 2011 Japan Agency for Marine-Earth Science and Technology



JAMSTEC
国立研究開発法人
海洋研究開発機構
JAPAN AGENCY FOR MARINE-EARTH SCIENCE AND TECHNOLOGY

MIRAI MR08-E01 Shipboard Acoustic Doppler Current Profiler (ADCP)

Last Modified: 2016-12-16

[ReadMe](#) [Observation Data](#) [Data Format](#)

Cruise ID: [MR08-E01](#)

Shipboard Acoustic Doppler Current Profiler (ADCP): Processed (DMO)-Corrected

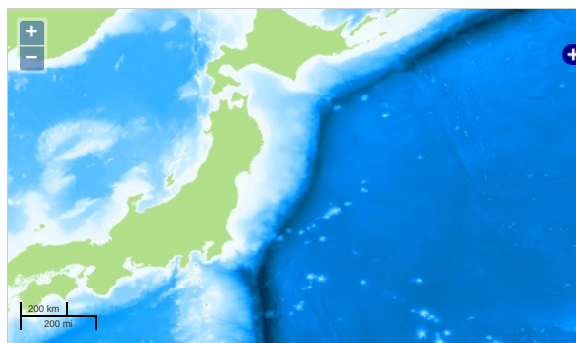
Data Policy: [JAMSTEC](#)

Observation Items: Depth, Absolute velocity (zonal, meridional and vertical)

Science Keywords:

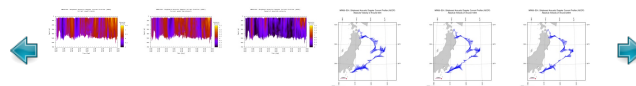
OCEANS > OCEAN CIRCULATION > OCEAN CURRENTS

Observation Map

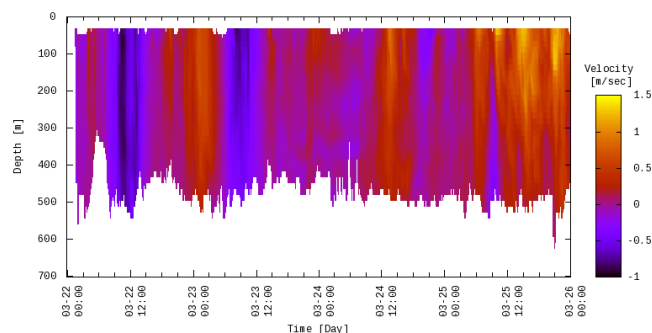


... Observation Line ... Navigation ... Observation, Dive Point, Hole

Figures



MR08-E01: Shipboard Acoustic Doppler Current Profiler (ADCP)
Current speed (zonal)

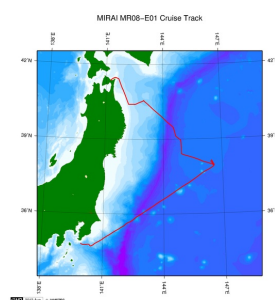


Data List

File names

☐ MR08-E01.txt

Related Information



MR08-E01

Ship Name: MIRAI

Period: 2008-03-22 - 2008-03-28

Chief Scientist: Hiroshi Ichikawa (JAMSTEC)

[Enlarge Image](#)

Update History

2016-12-16	An observation data was registerd.
2015-07-30	An observation data was registerd.
2014-08-02	An observation data was registerd.
2012-10-26	An observation data was registerd.

JAMSTEC

[Site Policy](#)
[Privacy Policy](#)
[Application for Data and Samples](#)
[Data Policy](#)

What's New
[Update History](#)
[Feeds](#)

Lists

[Publication List](#)
[Amount of Public Info.](#)
Data
[Map Search](#)
[Data Tree](#)
[Detailed Search](#)

Information of the Ships

[NATSUSHIMA](#)
[KAIYO](#)
[YOKOSUKA](#)
[MIRAI](#)
[KAIREI](#)
[CHIKYU](#)
[KAIMEI](#)
[SHINSEI MARU](#)
[HAKUHO MARU](#)

Information of the Submersibles

[KAIKO](#)
[SHINKAI 2000](#)
[SHINKAI 6500](#)
[DEEP TOW](#)
[HYPER-DOLPHIN](#)
[URASHIMA](#)
[YOKOSUKA DEEP TOW](#)
[6K Camera DEEP TOW](#)
[6K Sonar DEEP TOW](#)
[KM-ROV](#)
[POWER GRAB SAMPLER \(SHELL\)](#)
[POWER GRAB SAMPLER \(CLOW\)](#)
[BMS](#)

Go to a Cruise Information

Cruise ID:

Go to a Dive Information

Dive ID:

Copyright 2011 Japan Agency for Marine-Earth Science and Technology



JAMSTEC
JAPAN AGENCY FOR MARINE-EARTH SCIENCE AND TECHNOLOGY

国立研究開発法人
海洋研究開発機構