

MIRAI MR05-01 Marine Meteorology

Last Modified: 2014-07-25

[ReadMe](#) [Observation Data](#) [Data Format](#)

Cruise ID: **MR05-01**

Marine Meteorology: Processed (DMO)-Corrected

Data Policy: **JAMSTEC**

Observation Items: Atmospheric pressure, Air temperature, Dew point temperature, Relative humidity, Sea surface temperature, Zonal and meridional wind component, Precipitation, Shortwave radiation, Longwave radiation

Science Keywords:

ATMOSPHERE > ATMOSPHERIC PRESSURE > SEA LEVEL PRESSURE
ATMOSPHERE > ATMOSPHERIC RADIATION > LONGWAVE RADIATION
ATMOSPHERE > ATMOSPHERIC RADIATION > SHORTWAVE RADIATION
ATMOSPHERE > ATMOSPHERIC TEMPERATURE > AIR TEMPERATURE
ATMOSPHERE > ATMOSPHERIC WATER VAPOR > DEW POINT TEMPERATURE
ATMOSPHERE > ATMOSPHERIC WATER VAPOR > HUMIDITY
ATMOSPHERE > PRECIPITATION
OCEANS > OCEAN TEMPERATURE > SEA SURFACE TEMPERATURE
OCEANS > OCEAN WAVES > SIGNIFICANT WAVE HEIGHT
OCEANS > OCEAN WINDS > SURFACE WINDS

Cruise Report

http://www.godac.jamstec.go.jp/catalog/data/doc_catalog/media/MR05-01_all.pdf

For Using Data

Principal Investigator

Data Management Office

Use Constraints

See [Terms and Conditions](#) about constrain of use.

Data Citation

See [Terms and Conditions](#) about data citation.

Period (UTC)

2005-02-28 00:00 – 2005-03-24 00:00

Instrument

Instrument:

General maritime meteorological observation system

Instrument:

SOAR (Shipboard Oceanographic and Atmospheric Radiation) (- MR20-01)



Overview

"MIRAI meteorological integrated dataset" is a set of "suitably composed data" which consists of 10-minute-average corrected Atmospheric Pressure, Air Temperature, Relative Humidity, Wind Direction and Speed, Precipitation, Radiation, Sea Surface Temperature, and Wave Height observed by R/V MIRAI. The correction and processing method was produced by Dr. K. Yoneyama (IORGC/JAMSTEC) in cooperation with DMO. The actual data processing was conducted by DMO. See [here](#) for detailed correction and processing method.

Specifications

Sensors	Type	Manufacturer	Location (from sea surface)
Anemometer	05106	R.M. Young, USA	Foremast (25m)
Tair/RH	HMP45A	Vaisala, Finland with 43408 Gill aspirated radiation shield R.M. Young, USA	Starboard and port side at compass deck (21m)
Thermometer (SST)	SBE 3S	Sea-Bird Electronics, USA	Bow thruster room (-4.5m)
Barometer	F451	Yokogawa, Japan	Weather observation room at captain deck (14m)
Rain guage	50202	R.M. Young, USA	Foremast (24m)
Radiometer (shortwave)	PSP	Eppley, USA	Foremast (25m)
Radiometer (long-wave)	PIR	Eppley, USA	Foremast (25m)
Wave height meter	WM-2	Tsurumi-Seiki, Japan	Bow (10m)

Sensors information

Tair/RH sensor calibration date

Starboard side : 2004/08/26

Port side : 2004/08/26

Rain guage calibration (Using the revision of rain data)

Minimum value (0.0 cc) : 0.71 mm

Maximum value (511.5 cc) : 51.32 mm

Date : 2005/02/20

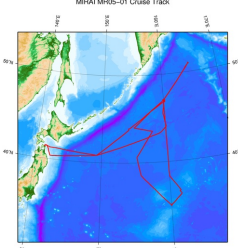
Need raw data?


If you would like the raw data set, please contact us from "Contact Us" above.

Note

Related Information

MIRAI MR05-01 Cruise Track



 [Enlarge Image](#)

MR05-01

Ship Name: MIRAI

Period: 2005-02-28 - 2005-03-24

Chief Scientist: Makio Honda (JAMSTEC)

Project Name: [Station K2,Station KNOT]

Update History	
2014-07-25	An observation data was registerd.
2012-11-25	An observation data was registerd.

JAMSTEC

Site Policy

Privacy Policy

Application for Data and Samples

Data Policy

What's New

Update History

Feeds

Lists

Publication List

Amount of Public Info.

Data

Map Search

Data Tree

Detailed Search

Information of the Ships

NATSUSHIMA

KAIYO

YOKOSUKA

MIRAI

KAIREI

CHIKYU

KAI MEI

SHINSEI MARU

HAKUHO MARU

Information of the Submersibles

KAIKO

SHINKAI 2000

SHINKAI 6500

DEEP TOW

HYPER-DOLPHIN

URASHIMA

YOKOSUKA DEEP TOW

6K Camera DEEP TOW

6K Sonar DEEP TOW

KM-ROV

POWER GRAB SAMPLER (SHELL)

POWER GRAB SAMPLER (CLOW)

BMS

Go to a Cruise Information

Cruise ID:

Go

Go to a Dive Information

Dive ID:

Go

 **JAMSTEC** 国立研究開発法人 海洋研究開発機構

JAPAN AGENCY FOR MARINE-EARTH SCIENCE AND TECHNOLOGY

Copyright 2011 Japan Agency for Marine-Earth Science and Technology

MIRAI MR05-01 Marine Meteorology

Last Modified: 2014-07-25

[ReadMe](#) [Observation Data](#) [Data Format](#)

Cruise ID: [MR05-01](#)

Marine Meteorology: Processed (DMO)-Corrected

Data Policy: [JAMSTEC](#)

Meteorology Corrected

Single space separated.

No.	Column	Content	Unit	format (nodata or baddata)	Remarks
1	1-12	Date and time [YYYYMMDDhhmm]		i12	Every 10 minutes* * Time stamp is set at the end of average
2	14-21	Julian day [DDD.DDDD]		f8.4	Every 10 minutes*
3	23-29	Longitude [0 to 360]	degree	f7.3 (999.999)	Location at time stamp East longitude
4	31-37	Latitude [-90 to 90]	degree	f7.3 (999.999)	Location at time stamp +: North latitude -: South latitude
5	39-44	Atmospheric pressure	hPa	f6.1 (9999.9)	10-minute mean*
6	46-50	Air temperature	deg-C	f5.1 (999.9)	10-minute mean* Data is selected on the windward side
7	52-56	Dewpoint temperature	deg-C	f5.1 (999.9)	10-minute mean* Calculated from 'Air temperature' and 'Relative humidity' using WMO's Formula(**) for liquid water ** WMO-No.8 (Guide to Meteorological Instruments and Methods of Observation)
8	58-62	Relative humidity	%	f5.1 (999.9)	10-minute mean* Data is selected on the windward side
9	64-70	Sea surface temperature (SST)	deg-C	f7.4 (99.9999)	10-minute mean* From EPCS/TSG
10	72-76	Wind speed (zonal)	m/sec	f5.1 (999.9)	10-minute mean* No anemometer height adjustment
11	78-82	Wind speed (meridional)	m/sec	f5.1 (999.9)	10-minute mean* No anemometer height adjustment
12	84-89	Rainfall intensity	mm/hr	f6.2 (999.99)	10-minute mean*
13	91-96	Short wave radiation	W/m2	f6.1 (9999.9)	10-minute mean*
14	98-102	Long wave radiation	W/m2	f5.1 (999.9)	10-minute mean*
15	104-108	Significant wave height	m	f5.2 (99.99)	Calculated every an hour Calculated every 3 hours, before March 2003
16	110-114	Wave period	second	f5.2 (99.99)	Calculated every an hour Calculated every 3 hours, before March 2003

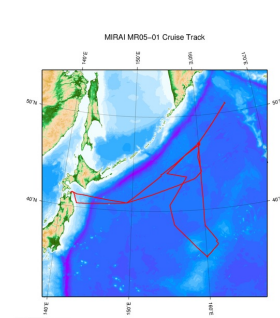
Data Example

```

YYYYMMDDhhmm DDD.DDDD Lon Lat Press AT DT RH SST WindU WindV Rain SWR LWR WH WP
200611290000 333.0000 77.314 2.715 1009.2 27.6 23.7 79.2 28.8732 -2.5 -1.6 0.00 0.0 388.1 0.94 7.69
200611290010 333.0070 77.346 2.703 1009.3 27.6 23.7 79.3 28.8931 -2.3 -1.1 0.00 0.0 388.3 0.96 7.92
200611290020 333.0139 77.378 2.692 1009.5 27.6 23.8 79.8 28.8957 -2.0 -0.5 0.00 0.0 387.7 0.96 7.92
200611290030 333.0208 77.410 2.681 1009.6 27.6 23.7 79.1 28.9206 -2.3 -1.0 0.00 0.0 388.0 0.96 7.92
200611290040 333.0278 77.442 2.670 1009.7 27.7 23.6 78.6 28.9477 -2.4 -0.7 0.00 0.0 386.7 0.96 7.92
200611290050 333.0347 77.474 2.658 1009.9 27.7 23.8 79.3 28.9166 -2.7 -1.2 0.00 2.4 390.7 0.96 7.92
200611290100 333.0417 77.506 2.647 1010.1 27.7 23.7 79.1 28.8948 -3.0 -1.5 0.00 12.6 390.8 0.96 7.92

```

Related Information



[Enlarge Image](#)

MR05-01

Ship Name: MIRAI
Period: 2005-02-28 - 2005-03-24
Chief Scientist: Makio Honda (JAMSTEC)
Project Name: [Station K2, Station KNOT]

Update History

2014-07-25	An observation data was registerd.
2012-11-25	An observation data was registerd.

JAMSTEC

Site Policy
Privacy Policy
Application for Data and
Samples
Data Policy

What's New

Update History
Feeds

Lists

Publication List
Amount of Public Info.

Data

Map Search
Data Tree
Detailed Search

Information of the Ships

NATSUSHIMA
KAIYO
YOKOSUKA
MIRAI
KAIREI
CHIKYU
KAIMEI
SHINSEI MARU
HAKUHO MARU

Information of the
Submersibles

KAIKO
SHINKAI 2000
SHINKAI 6500
DEEP TOW
HYPER-DOLPHIN
URASHIMA
YOKOSUKA DEEP TOW
6K Camera DEEP TOW
6K Sonar DEEP TOW
KM-ROV
POWER GRAB SAMPLER
(SHELL)
POWER GRAB SAMPLER
(CLOW)
BMS

Go to a Cruise Information

Cruise ID:

Go to a Dive Information

Dive ID:

Copyright 2011 Japan Agency for Marine-Earth Science and
Technology



JAMSTEC

国立研究開発法人
海洋研究開発機構
JAPAN AGENCY FOR MARINE-EARTH SCIENCE AND TECHNOLOGY

MIRAI MR05-01 Marine Meteorology

Last Modified: 2014-07-25

[ReadMe](#) [Observation Data](#) [Data Format](#)

Cruise ID: **MR05-01**

Marine Meteorology: Processed (DMO)-Corrected

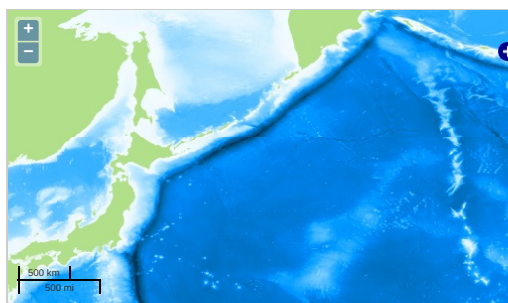
Data Policy: **JAMSTEC**

Observation Items: Atmospheric pressure, Air temperature, Dew point temperature, Relative humidity, Sea surface temperature, Zonal and meridional wind component, Precipitation, Shortwave radiation, Longwave radiation

Science Keywords:

ATMOSPHERE	> ATMOSPHERIC PRESSURE	> SEA LEVEL PRESSURE
ATMOSPHERE	> ATMOSPHERIC RADIATION	> LONGWAVE RADIATION
ATMOSPHERE	> ATMOSPHERIC RADIATION	> SHORTWAVE RADIATION
ATMOSPHERE	> ATMOSPHERIC TEMPERATURE	> AIR TEMPERATURE
ATMOSPHERE	> ATMOSPHERIC WATER VAPOR	> DEW POINT TEMPERATURE
ATMOSPHERE	> ATMOSPHERIC WATER VAPOR	> HUMIDITY
ATMOSPHERE	> PRECIPITATION	
OCEANS	> OCEAN TEMPERATURE	> SEA SURFACE TEMPERATURE
OCEANS	> OCEAN WAVES	> SIGNIFICANT WAVE HEIGHT
OCEANS	> OCEAN WINDS	> SURFACE WINDS

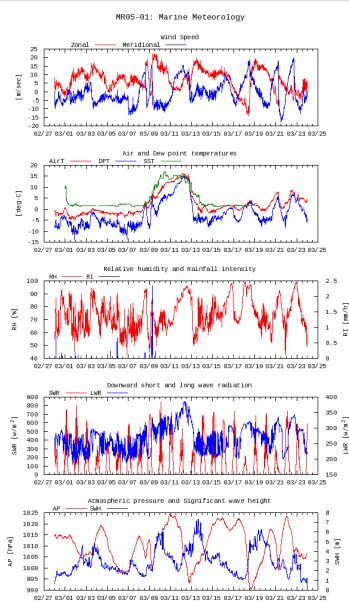
Observation Map



— ... Observation Line — ... Navigation ● ... Observation, Dive Point, Hole

Imagery reproduced from ...

Figures



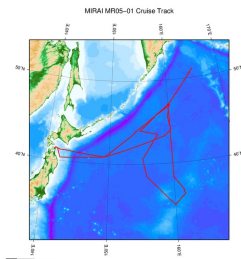
Data List

[Add to Basket](#)

File names

☐ MR05-01.dat

Related Information



 [Enlarge Image](#)

MR05-01

Ship Name: MIRAI
Period: 2005-02-28 - 2005-03-24
Chief Scientist: Makio Honda (JAMSTEC)
Project Name: [Station K2, Station KNOT]

Update History

2014-07-25	An observation data was registerd.
2012-11-25	An observation data was registerd.

JAMSTEC

[Site Policy](#)
[Privacy Policy](#)
[Application for Data and Samples](#)
[Data Policy](#)
[What's New](#)
[Update History](#)
[Feeds](#)

[Lists](#)
[Publication List](#)
[Amount of Public Info.](#)
[Data](#)
[Map Search](#)
[Data Tree](#)
[Detailed Search](#)

Information of the Ships

[NATSUSHIMA](#)
[KAIYO](#)
[YOKOSUKA](#)
[MIRAI](#)
[KAIREI](#)
[CHIKYU](#)
[KAIMEI](#)
[SHINSEI MARU](#)
[HAKUHO MARU](#)

Information of the Submersibles

[KAIKO](#)
[SHINKAI 2000](#)
[SHINKAI 6500](#)
[DEEP TOW](#)
[HYPER-DOLPHIN](#)
[URASHIMA](#)
[YOKOSUKA DEEP TOW](#)
[6K Camera DEEP TOW](#)
[6K Sonar DEEP TOW](#)
[KM-ROV](#)
[POWER GRAB SAMPLER \(SHELL\)](#)
[POWER GRAB SAMPLER \(CLOW\)](#)
[BMS](#)

Go to a Cruise Information

Cruise ID:

Go to a Dive Information

Dive ID:

Copyright 2011 Japan Agency for Marine-Earth Science and Technology

