

## MIRAI MR13-03 Leg2 Radiosonde

Last Modified: 2015-08-26

[ReadMe](#) [Observation Data](#) [Data Format](#)

Cruise ID: [MR13-03 Leg2](#)

Radiosonde: Processed (DMO)-Corrected

Data Policy: [JAMSTEC](#)

Observation Items: Atmospheric pressure, Air temperature, Dew point temperature, Relative humidity, Wind speed (zonal, meridional), Height

Science Keywords:

ATMOSPHERE > ATMOSPHERIC WATER VAPOR > DEW POINT TEMPERATURE  
ATMOSPHERE > ATMOSPHERIC WATER VAPOR > HUMIDITY  
ATMOSPHERE > ATMOSPHERIC TEMPERATURE > TEMPERATURE PROFILES  
ATMOSPHERE > ATMOSPHERIC WINDS > UPPER LEVEL WINDS  
ATMOSPHERE > ATMOSPHERIC WINDS > WIND PROFILES

### Cruise Report

[http://www.godac.jamstec.go.jp/catalog/data/doc\\_catalog/media/MR13-03\\_leg1-2\\_all.pdf](http://www.godac.jamstec.go.jp/catalog/data/doc_catalog/media/MR13-03_leg1-2_all.pdf)

#### For Using Data

##### Principal Investigator

Data Management Office

##### Use Constraints

See [Terms and Conditions](#) about constrain of use.

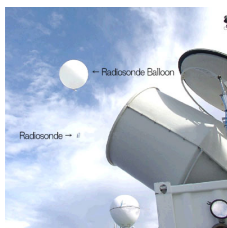
##### Data Citation

See [Terms and Conditions](#) about data citation.

### Instrument

Instrument:

Radiosonde (MR11-03 - MR15-E01  
Leg3)



### Overview

#### Correction method

· Correction of ship body warming

Temperature and dew point temperature data near the surface (4.5 hPa from ship deck) were corrected by linear extrapolation using upper layer data, since these data were affected by ship body warming (cooling) at daytime (nighttime). Details for data processing and correction can be found in [Yoneyama et al. \(2002\)](#).

#### Note

Information about each radiosonde data are listed in the following table. It contains corrected sounding data, launch time, position, sensor information and calibration results for atmospheric pressure, air temperature and relative humidity. Calibration is conducted for every sensor prior to launch. Therefore, even raw data take in this calibration result. If the calibration result shows the positive value, it means that the calibrator showed the higher value than that of the sonde sensor. Filename of corrected data shows a sounding time (YYMMDDHH.\*\*\*, where YY=year, MM=month, DD=day, and HH=hour) in UTC.

Data file	Launch time (UTC)		Launch station		Sensor information		Calibration result				Note
	Date	Time	Latitude	Longitude	Serial No.	Age	Atmospheric pressure[hPa]	Air temperature[deg-C]	Relative humidity1[%]	Relative humidity2[%]	
13061212.dat	2013/06/12	11:30	9.38N	134.56E	H4423378	232	-0.29	-0.14	-0.17	-0.24	
13061215.dat	2013/06/12	14:30	9.89N	134.65E	H4424594	232	-0.88	-0.17	-0.32	-0.32	
13061218.dat	2013/06/12	17:30	10.43N	134.73E	H4514475	226	-1.16	-0.07	-0.35	-0.35	Drizzle
13061221.dat	2013/06/12	20:30	10.98N	134.83E	H4424109	232	0.28	-0.04	0.00	-0.15	
13061300.dat	2013/06/12	23:30	11.49N	134.91E	H4423374	232	-0.08	-0.13	-0.31	-0.39	
13061303.dat	2013/06/13	02:30	12.00N	135.00E	H4424580	232	-0.19	-0.16	-0.07	-0.14	
13061306.dat	2013/06/13	05:30	12.00N	135.00E	H4423047	232	-0.24	-0.13	-0.20	-0.17	
13061309.dat	2013/06/13	08:30	11.99N	135.01E	H4424571	232	-0.87	-0.15	-0.18	-0.26	
13061312.dat	2013/06/13	11:30	12.00N	135.00E	H4424585	232	-0.29	-0.14	-0.17	-0.24	Drizzle
13061315.dat	2013/06/13	14:30	11.98N	135.00E	H4424550	233	0.02	-0.10	-0.38	-0.37	Drizzle
13061318.dat	2013/06/13	17:30	12.00N	135.01E	H4434338	232	-1.10	-0.06	-0.30	-0.47	
13061321.dat	2013/06/13	20:30	12.01N	135.00E	H4733925	211	-0.19	-0.14	-0.41	-0.43	Rain
13061400.dat	2013/06/13	23:30	12.00N	135.02E	H4423375	233	0.07	-0.07	-0.49	-0.49	Rain
13061403.dat	2013/06/14	02:30	12.00N	135.00E	H4424115	233	-0.01	-0.12	-0.31	-0.36	
13061406.dat	2013/06/14	05:30	11.99N	135.00E	H4434282	232	-0.29	-0.06	-0.27	-0.30	
13061409.dat	2013/06/14	08:30	11.99N	134.99E	H4424583	233	0.01	-0.06	-0.36	-0.38	
13061412.dat	2013/06/14	11:30	11.98N	134.98E	H4423379	234	0.18	-0.08	-0.49	-0.51	Rain
13061415.dat	2013/06/14	14:30	11.99N	134.98E	H4423384	234	0.40	-0.14	-0.43	-0.40	

13061418.dat	2013/06/14	20:30	12.00N	135.00E	H433959	240	-0.93	-0.17	-0.28	-0.34	Rain, Max:4807m
13061419.dat	2013/06/14	20:30	12.00N	135.00E	H4424578	234	-0.19	-0.08	-0.57	-0.59	Rain
13061500.dat	2013/06/14	20:30	12.00N	135.00E	H4424578	234	-0.93	-0.08	-0.18	-0.08	Max:5422m
13061503.dat	2013/06/15	02:30	12.00N	135.01E	H4424453	234	0.06	-0.16	-0.23	-0.28	Drizzle
13061506.dat	2013/06/15	05:30	12.00N	135.01E	H4424116	234	-0.01	-0.09	-0.16	-0.16	Drizzle
13061509.dat	2013/06/15	08:30	12.01N	135.01E	H4643790	218	-0.23	-0.16	-0.20	-0.19	
13061512.dat	2013/06/15	11:30	12.02N	135.01E	H4543593	226	-1.02	-0.16	-0.20	-0.25	
13061515.dat	2013/06/15	14:30	12.00N	135.01E	H4643782	219	-0.51	-0.15	-0.13	-0.13	
13061518.dat	2013/06/15	17:30	12.00N	135.00E	H4424556	235	-0.76	-0.12	-0.29	-0.23	
13061520.dat	2013/06/15	20:30	11.99N	134.99E	H4423628	235	0.09	-0.05	-0.21	-0.18	Max:1057m
13061521.dat	2013/06/15	21:00	11.99N	134.99E	H4424579	235	-0.38	-0.13	-0.25	-0.11	
13061600.dat	2013/06/15	23:30	12.00N	135.00E	H4643770	219	-0.91	-0.05	-0.03	-0.12	
13061603.dat	2013/06/16	02:30	11.99N	134.99E	H4433602	234	0.30	-0.13	0.03	0.01	
13061606.dat	2013/06/16	05:30	12.00N	135.00E	H4424573	235	-0.34	-0.14	-0.16	0.05	
13061609.dat	2013/06/16	08:30	12.00N	135.00E	H4433594	234	-0.28	-0.14	-0.14	-0.14	
13061612.dat	2013/06/16	11:30	11.99N	134.99E	H4733908	214	0.02	-0.05	-0.31	-0.33	
13061615.dat	2013/06/16	14:30	12.00N	135.01E	H4423061	236	-0.19	-0.11	-0.05	-0.18	
13061618.dat	2013/06/16	17:30	12.00N	135.01E	H4643786	220	-0.66	-0.11	-0.16	-0.18	
13061621.dat	2013/06/16	20:30	12.00N	135.01E	H4333662	242	-0.18	-0.05	-0.09	-0.17	
13061700.dat	2013/06/16	23:30	12.00N	135.00E	H4424538	236	-0.56	-0.14	-0.09	-0.10	
13061703.dat	2013/06/17	02:30	11.98N	135.00E	H4643771	220	-0.48	-0.07	0.14	0.18	
13061706.dat	2013/06/17	05:30	12.00N	135.01E	H4423368	236	0.34	-0.16	-0.03	-0.05	
13061709.dat	2013/06/17	08:30	12.01N	135.01E	H4643787	220	-0.41	-0.15	-0.10	-0.06	Rain
13061712.dat	2013/06/17	11:30	12.02N	135.01E	H4423372	236	0.17	-0.16	-0.23	-0.22	
13061715.dat	2013/06/17	14:30	12.00N	134.98E	H4643773	221	-0.66	-0.04	-0.06	-0.14	
13061718.dat	2013/06/17	17:30	12.00N	135.01E	H4424572	237	-0.70	-0.19	-0.18	0.21	
13061721.dat	2013/06/17	20:30	12.00N	135.00E	H4423366	237	0.53	-0.12	-0.20	-0.29	
13061800.dat	2013/06/17	23:30	12.00N	135.00E	H4433597	236	-0.27	-0.15	0.11	0.09	
13061803.dat	2013/06/18	02:30	12.00N	134.99E	H4434298	236	-0.31	-0.12	-0.02	-0.07	
13061806.dat	2013/06/18	05:30	12.00N	135.01E	H4424557	237	-0.43	-0.12	0.03	-0.02	
13061809.dat	2013/06/18	08:30	12.00N	135.01E	H4643788	221	-0.42	-0.03	-0.12	-0.16	
13061812.dat	2013/06/18	11:30	11.98N	135.00E	H4643775	222	-0.63	-0.11	-0.04	-0.10	
13061815.dat	2013/06/18	14:30	11.99N	135.01E	H4643780	222	-0.66	-0.12	-0.15	-0.09	
13061818.dat	2013/06/18	17:30	12.00N	135.02E	H4643781	222	-0.94	-0.09	-0.15	-0.14	
13061821.dat	2013/06/18	20:30	11.99N	135.02E	H4434321	237	0.01	-0.09	-0.22	-0.27	
13061900.dat	2013/06/18	23:30	12.00N	135.00E	H4433595	237	-0.27	-0.08	-0.07	-0.08	
13061903.dat	2013/06/19	02:30	11.98N	134.98E	H4433596	237	-0.04	-0.13	0.04	0.03	
13061906.dat	2013/06/19	05:30	12.00N	135.01E	H4433615	237	-0.22	0.02	-0.01	-0.13	
13061909.dat	2013/06/19	08:30	12.02N	135.01E	H4624320	224	-0.30	-0.15	-0.17	-0.06	
13061912.dat	2013/06/19	11:30	12.02N	135.01E	H4624299	224	-0.20	-0.23	-0.15	-0.17	
13061915.dat	2013/06/19	14:30	12.00N	134.99E	H4433598	238	-0.35	-0.18	-0.03	-0.26	
13061918.dat	2013/06/19	17:30	12.00N	135.00E	H4433603	238	-0.44	0.03	-0.06	-0.09	
13061921.dat	2013/06/19	20:30	12.01N	135.01E	H4543950	230	-0.90	-0.13	-0.27	-0.25	
13062000.dat	2013/06/19	23:30	12.00N	135.00E	H4423938	239	-0.51	-0.09	-0.04	-0.08	
13062003.dat	2013/06/20	02:30	12.00N	135.01E	H4433613	238	-0.46	-0.10	0.00	-0.04	
13062006.dat	2013/06/20	05:30	12.00N	135.00E	H4433591	238	-0.29	-0.03	-0.10	-0.08	
13062009.dat	2013/06/20	08:30	12.00N	135.00E	H4423943	239	-0.13	-0.09	-0.07	-0.10	
13062012.dat	2013/06/20	11:30	12.00N	135.00E	H4423934	240	-0.07	-0.03	-0.05	-0.11	
13062015.dat	2013/06/20	14:30	12.00N	135.00E	H4423990	240	-0.21	-0.10	-0.07	-0.14	Rain
13062018.dat	2013/06/20	17:30	12.00N	135.00E	H4423919	240	-0.39	-0.19	0.04	-0.04	Rain
13062021.dat	2013/06/20	20:30	12.00N	135.00E	H4423918	240	-0.21	-0.02	-0.03	-0.05	
13062100.dat	2013/06/20	23:30	12.00N	135.00E	H4433604	239	-0.17	-0.13	0.13	0.10	
13062103.dat	2013/06/21	02:30	12.00N	135.00E	H4423936	240	0.69	0.02	0.05	0.04	
13062106.dat	2013/06/21	05:30	12.00N	135.00E	H4423920	240	-0.68	-0.13	0.11	0.08	
13062109.dat	2013/06/21	08:30	12.01N	135.00E	H4423924	240	-0.20	-0.10	0.04	0.09	
13062112.dat	2013/06/21	11:30	12.02N	135.01E	H4433599	240	0.29	-0.14	0.08	0.06	
13062115.dat	2013/06/21	14:30	11.99N	135.00E	H4623291	227	-0.97	-0.13	-0.15	-0.18	
13062118.dat	2013/06/21	17:30	12.00N	135.00E	H4534427	233	-0.03	-0.25	-0.20	-0.18	
13062121.dat	2013/06/21	20:30	12.01N	135.01E	H4423928	241	-0.40	-0.08	-0.03	-0.14	
13062200.dat	2013/06/21	23:30	12.00N	135.00E	H4423926	241	-0.57	-0.07	0.02	-0.01	
13062203.dat	2013/06/22	02:30	12.00N	135.00E	H4423939	241	0.57	-0.12	-0.07	-0.11	
13062206.dat	2013/06/22	05:30	12.00N	135.00E	H4433614	240	-0.36	-0.11	-0.05	-0.07	
13062209.dat	2013/06/22	08:30	12.00N	135.00E	H4433605	240	-0.08	-0.06	-0.09	-0.14	
13062212.dat	2013/06/22	11:30	12.00N	135.00E	H4423997	242	-0.38	-0.12	-0.27	-0.29	
13062215.dat	2013/06/22	14:30	12.01N	135.00E	H4423935	242	1.17	-0.15	-0.17	-0.18	
13062218.dat	2013/06/22	17:30	12.00N	135.00E	H4423942	242	-0.47	-0.07	-0.17	-0.18	
13062221.dat	2013/06/22	20:30	12.00N	135.00E	H4433607	241	0.06	-0.16	-0.12	-0.16	Rain
13062300.dat	2013/06/22	23:30	12.00N	135.00E	H4423987	242	-0.28	-0.15	-0.11	-0.14	
13062303.dat	2013/06/23	02:30	12.00N	135.00E	H4423931	242	-0.12	-0.08	0.05	0.06	
13062306.dat	2013/06/23	05:30	12.00N	135.00E	H4433592	241	-0.56	-0.09	-0.04	-0.02	
13062309.dat	2013/06/23	08:30	12.00N	135.00E	H4423925	242	0.18	-0.09	-0.07	-0.01	
13062312.dat	2013/06/23	11:30	12.02N	134.99E	H4424110	242	-0.28	-0.14	-0.17	-0.20	

13062315.dat	2013/06/23	12:00N	135.00E	H4423984	228	-1.00	-0.22	-0.27	-0.31	
13062318.dat	2013/06/23	12:00N	135.00E	H4423984	227	-0.89	-0.12	0.28	0.38	
13062321.dat	2013/06/23	12:00N	135.00E	H4423983	242	-0.15	-0.13	-0.03	0.06	Note
13062400.dat	2013/06/23	12:00N	135.00E	H4423983	243	-0.33	-0.10	-0.02	-0.00	
13062403.dat	2013/06/24	12:00N	135.00E	H4423977	243	-0.16	-0.05	-0.17	-0.21	
13062406.dat	2013/06/24	12:00N	135.00E	H44239612	242	-0.29	-0.14	-0.02	-0.08	
13062409.dat	2013/06/24	12:00N	135.00E	H4423911	243	-1.10	-0.13	-0.06	-0.11	
13062412.dat	2013/06/24	12:00N	135.00E	H4623300	230	-1.18	-0.18	-0.17	-0.31	
13062415.dat	2013/06/24	14:30	135.00E	H4623283	230	-1.15	-0.15	-0.36	-0.38	
13062418.dat	2013/06/24	17:30	135.00E	H4423992	244	-0.19	-0.09	-0.37	-0.38	
13062421.dat	2013/06/24	20:30	135.00E	H4423993	244	-0.45	-0.17	-0.32	-0.33	
13062500.dat	2013/06/24	23:30	135.00E	H4643717	228	-0.40	0.05	-0.32	-0.34	
13062503.dat	2013/06/25	02:30	135.00E	H4423989	244	-0.40	-0.13	-0.15	-0.17	
13062506.dat	2013/06/25	05:30	135.00E	H4423941	244	-0.30	-0.14	-0.13	-0.22	
13062509.dat	2013/06/25	08:30	135.00E	H4743740	221	0.13	-0.13	-0.34	-0.53	
13062512.dat	2013/06/25	11:30	12.02N	135.00E	H4633090	230	0.64	-0.15	-0.28	-0.34
13062515.dat	2013/06/25	14:30	12.00N	135.01E	H4643748	229	-0.33	-0.02	-0.41	-0.39
13062518.dat	2013/06/25	17:30	12.00N	135.00E	H4533055	237	-1.07	-0.14	-0.46	-0.48
13062521.dat	2013/06/25	20:30	12.00N	135.00E	H4423974	245	-0.75	-0.06	-0.35	-0.34
13062600.dat	2013/06/25	23:30	12.00N	135.00E	H4423979	245	-0.08	-0.11	0.11	-0.25
13062603.dat	2013/06/26	02:30	12.00N	135.00E	H4423988	245	-0.31	-0.11	-0.05	-0.08
13062606.dat	2013/06/26	05:30	12.00N	135.00E	H4623304	231	-0.90	-0.19	-0.19	-0.22
13062609.dat	2013/06/26	08:30	12.00N	135.00E	H4423986	245	-0.31	-0.12	-0.16	-0.23
13062612.dat	2013/06/26	11:30	12.00N	135.00E	H4423991	246	-0.40	-0.19	-0.24	-0.25
13062615.dat	2013/06/26	14:30	12.00N	135.00E	H4523807	239	-1.00	-0.15	-0.41	-0.41
13062618.dat	2013/06/26	17:30	12.00N	135.00E	H4514411	240	-1.22	-0.11	-0.34	-0.35
13062621.dat	2013/06/26	20:30	12.01N	135.00E	H4643081	230	-0.47	-0.13	-0.32	-0.43
13062700.dat	2013/06/26	23:30	12.00N	135.00E	H4423980	246	0.09	-0.07	-0.13	-0.13
13062703.dat	2013/06/27	02:30	12.00N	135.00E	H4643051	230	-0.57	-0.10	-0.12	-0.15
13062706.dat	2013/06/27	05:30	12.00N	135.00E	H4423185	246	0.62	-0.09	-0.14	-0.13
13062709.dat	2013/06/27	08:30	12.00N	135.00E	H4423996	246	-0.15	-0.14	-0.24	-0.29
13062712.dat	2013/06/27	11:30	12.02N	134.99E	H4423179	246	-0.26	-0.13	-0.27	-0.28
13062715.dat	2013/06/27	14:30	12.00N	134.99E	H4423978	247	-0.15	-0.04	-0.27	-0.27
13062718.dat	2013/06/27	17:30	12.00N	135.00E	H4543018	238	-0.76	-0.36	-0.13	-0.40
13062721.dat	2013/06/27	20:30	12.00N	135.00E	H4523814	240	-0.98	-0.14	-0.33	-0.41
13062800.dat	2013/06/27	23:30	12.00N	135.00E	H4423932	247	-0.34	0.04	-0.07	-0.01
13062803.dat	2013/06/28	02:30	12.00N	135.00E	H4423184	247	-0.52	-0.07	-0.15	-0.12
13062806.dat	2013/06/28	05:30	12.00N	135.00E	H4423191	247	-0.39	-0.06	-0.12	-0.14
13062809.dat	2013/06/28	08:30	12.00N	135.00E	H4543100	238	-0.26	-0.21	-0.23	-0.26
13062812.dat	2013/06/28	11:30	12.00N	135.00E	H4423178	248	-0.33	-0.13	-0.25	-0.25
13062815.dat	2013/06/28	14:30	12.00N	135.00E	H4513015	242	0.19	-0.14	-0.33	-0.30
13062818.dat	2013/06/28	17:30	12.00N	135.00E	H4743567	225	0.24	-0.27	-0.36	-0.39
13062821.dat	2013/06/28	20:30	12.00N	135.01E	H4423981	248	0.53	-0.11	-0.30	-0.15
13062900.dat	2013/06/28	23:30	12.01N	135.01E	H4633508	233	-0.95	-0.17	-0.33	-0.41
13062903.dat	2013/06/29	02:30	12.00N	135.00E	H4423984	248	-0.34	-0.11	-0.21	-0.23
13062906.dat	2013/06/29	05:30	12.00N	135.00E	H4543433	239	-0.71	-0.23	-0.27	-0.35
13062909.dat	2013/06/29	08:30	12.00N	135.00E	H4313125	256	-0.67	-0.16	-0.26	-0.30
13062912.dat	2013/06/29	11:30	12.02N	135.00E	H4323033	256	-0.17	-0.20	-0.36	-0.39
13062915.dat	2013/06/29	14:30	12.00N	135.00E	H4323746	256	-0.47	-0.17	-0.31	-0.33
13062918.dat	2013/06/29	17:30	12.00N	135.00E	H4323750	256	-0.81	-0.22	-0.41	-0.42
13062921.dat	2013/06/29	20:30	12.00N	135.00E	H4323040	256	-0.30	-0.16	-0.44	-0.47
13063000.dat	2013/06/29	23:30	12.00N	135.00E	H4323008	256	-0.37	-0.15	-0.30	-0.39
13063003.dat	2013/06/30	02:30	12.01N	134.99E	H4323005	256	-0.31	-0.05	-0.18	-0.24
13063006.dat	2013/06/30	05:30	11.94N	134.90E	H4313075	257	-0.83	-0.11	-0.11	-0.15
13063009.dat	2013/06/30	08:30	12.04N	135.00E	H4323031	256	-0.17	-0.18	-0.26	-0.29
13063012.dat	2013/06/30	11:30	11.95N	134.91E	H4323749	256	-0.91	-0.24	-0.32	-0.35
13063015.dat	2013/06/30	14:30	12.02N	135.00E	H4514495	244	-0.56	-0.17	-0.45	-0.52
13063018.dat	2013/06/30	17:30	12.42N	135.06E	H4323731	257	0.65	-0.07	-0.35	-0.37
13063021.dat	2013/06/30	20:30	12.97N	135.12E	H4323029	257	-0.45	-0.18	-0.38	-0.42
13070100.dat	2013/06/30	23:30	13.56N	135.19E	H4323734	257	-0.68	-0.13	-0.20	-0.24
13070103.dat	2013/07/01	02:30	14.15N	135.25E	H4323032	257	-0.13	-0.13	-0.26	-0.27
13070106.dat	2013/07/01	05:30	14.78N	135.34E	H4323748	257	-0.30	-0.19	-0.12	-0.28
13070109.dat	2013/07/01	08:30	15.36N	135.42E	H4323004	257	-0.12	-0.14	-0.23	-0.23
13070112.dat	2013/07/01	11:30	16.01N	135.50E	H4633072	236	-0.45	-0.22	-0.31	-0.32
13070118.dat	2013/07/01	17:30	17.38N	135.67E	H4514494	245	-0.33	-0.16	-0.31	-0.40
13070200.dat	2013/07/01	23:30	18.65N	135.84E	H4423187	251	0.01	-0.10	-0.12	-0.11
13070206.dat	2013/07/02	05:30	19.96N	136.00E	H4514482	245	0.32	-0.18	-0.14	-0.30

Reference

K. Yoneyama, M.Hanyu, S.Sueyoshi, F.Yoshiura, and M.Katsumata, 2002:Radiosonde observation from the ship in the tropical region. [\[PDF:400kbyte\]](#)  
JAMSTECR, Vol.45, 31-39.

Others

- ・ Main processor: DigiCORAlll, MW31(after 2011 Apr.) [VAISALA, Finland]
- ・ Radiosonde Sensor: RS02-SCB, RS00-15CH, RS00-15C [VAISALA, Finland]

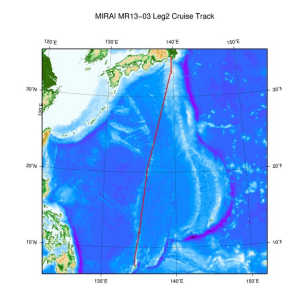
・ RADIUSHINE SENSOR, RS92-200T, RS92-1000T, RS92-100 (VAISALA, Finland)

\* The observations which using the RS80 sensors were mentioned in the "Note" of data page (other observations were performed using the RS92 sensors).

・ Launcher Location: 22m (from base line)

#### Note

#### Related Information



[Enlarge Image](#)

#### MR13-03 Leg2

Ship Name: MIRAI

Period: 2013-06-12 - 2013-07-06

Chief Scientist: Masaki Katsumata (JAMSTEC)

Project Name: [MJO Research]

Proposal ▶ [Observational Study on the Intreseasonal Variability over the western Pacific](#)

Title:

#### Update History

2015-08-26

An observation data was registerd.

#### JAMSTEC

[Site Policy](#)

[Privacy Policy](#)

[Application for Data and Samples](#)

[Data Policy](#)

#### What's New

[Update History](#)

[Feeds](#)

#### Lists

[Publication List](#)

[Amount of Public Info.](#)

#### Data

[Map Search](#)

[Data Tree](#)

[Detailed Search](#)

#### Information of the Ships

[NATSUSHIMA](#)

[KAIYO](#)

[YOKOSUKA](#)

[MIRAI](#)

[KAIREI](#)

[CHIKYU](#)

[KAIMEI](#)

[SHINSEI MARU](#)

[HAKUHO MARU](#)

#### Information of the Submersibles

[KAIKO](#)

[SHINKAI 2000](#)

[SHINKAI 6500](#)

[DEEP TOW](#)

[HYPER-DOLPHIN](#)

[URASHIMA](#)

[YOKOSUKA DEEP TOW](#)

[6K Camera DEEP TOW](#)

[6K Sonar DEEP TOW](#)

[KM-ROV](#)

[POWER GRAB SAMPLER \(SHELL\)](#)

[POWER GRAB SAMPLER \(CLOW\)](#)

[BMS](#)

#### Go to a Cruise Information

Cruise ID:

Go

#### Go to a Dive Information

Dive ID:

Go

Copyright 2011 Japan Agency for Marine-Earth Science and Technology



**JAMSTEC**

国立研究開発法人  
海洋研究開発機構  
JAPAN AGENCY FOR MARINE-EARTH SCIENCE AND TECHNOLOGY

## MIRAI MR13-03 Leg2 Radiosonde

Last Modified: 2015-08-26

[ReadMe](#) [Observation Data](#) [Data Format](#)

Cruise ID: [MR13-03 Leg2](#)

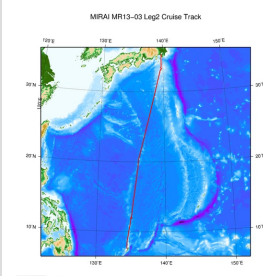
Radiosonde: Processed (DMO)-Corrected

Data Policy: [JAMSTEC](#)

### Radiosonde Corrected

No.	Column	Description	Format	Unit	Remarks
1	3 - 8	Atmospheric pressure	f6.1	hPa	
2	10 - 15	Air temperature	f6.1	deg-C	'9999.0' is missing value.
3	17 - 22	Dew point temperature	f6.1	deg-C	'9999.0' is missing value.
4	24 - 27	Relative humidity	i4	%	'9999' is missing value.
5	29 - 34	Wind speed (zonal)	f6.1	m/sec	'9999.0' is missing value.
6	36 - 41	Wind speed (meridional)	f6.1	m/sec	'9999.0' is missing value.
7	44 - 48	Height (from sea level)	i5	m	'99999' is missing value.
8	49 - 50	Terminator	a2		CR+LF

### Related Information



[Enlarge Image](#)

#### MR13-03 Leg2

Ship Name: MIRAI

Period: 2013-06-12 - 2013-07-06

Chief Scientist: Masaki Katsumata (JAMSTEC)

Project Name: [MJO Research]

Proposal ▶ Observational Study on the Intreseasonal Variability over the western Pacific

Title:

### Update History

2015-08-26 An observation data was registered.

**JAMSTEC**  
[Site Policy](#)  
[Privacy Policy](#)  
[Application for Data and Samples](#)  
[Data Policy](#)  
**What's New**  
[Update History](#)  
[Feeds](#)

**Lists**  
[Publication List](#)  
[Amount of Public Info.](#)  
**Data**  
[Map Search](#)  
[Data Tree](#)  
[Detailed Search](#)

**Information of the Ships**  
[NATSUSHIMA](#)  
[KAIYO](#)  
[YOKOSUKA](#)  
[MIRAI](#)  
[KAIREI](#)  
[CHIKYU](#)  
[KAIMEI](#)  
[SHINSEI MARU](#)  
[HAKUHO MARU](#)

**Information of the Submersibles**  
[KAIKO](#)  
[SHINKAI 2000](#)  
[SHINKAI 6500](#)  
[DEEP TOW](#)  
[HYPER-DOLPHIN](#)  
[URASHIMA](#)  
[YOKOSUKA DEEP TOW](#)  
[6K Camera DEEP TOW](#)  
[6K Sonar DEEP TOW](#)  
[KM-ROV](#)  
[POWER GRAB](#)  
[SAMPLER \(SHELL\)](#)  
[POWER GRAB](#)  
[SAMPLER \(CLOW\)](#)  
[BMS](#)

#### Go to a Cruise Information

Cruise ID:

#### Go to a Dive Information

Dive ID:

## MIRAI MR13-03 Leg2 Radiosonde

Last Modified: 2015-08-26

[ReadMe](#) [Observation Data](#) [Data Format](#)

Cruise ID: [MR13-03 Leg2](#)

Radiosonde: Processed (DMO)-Corrected

Data Policy: [JAMSTEC](#)

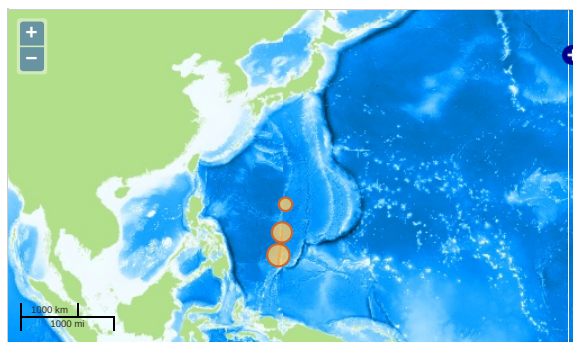
Observation Items: Atmospheric pressure, Air temperature, Dew point temperature, Relative humidity, Wind speed (zonal, meridional), Height

Science Keywords:

ATMOSPHERE > ATMOSPHERIC WATER VAPOR > DEW POINT TEMPERATURE  
ATMOSPHERE > ATMOSPHERIC WATER VAPOR > HUMIDITY  
ATMOSPHERE > ATMOSPHERIC TEMPERATURE > TEMPERATURE PROFILES  
ATMOSPHERE > ATMOSPHERIC WINDS > UPPER LEVEL WINDS  
ATMOSPHERE > ATMOSPHERIC WINDS > WIND PROFILES

### Observation Map

- Clicking the icon displays a balloon with observation information.
- Then click the observation name, figures will be displayed.

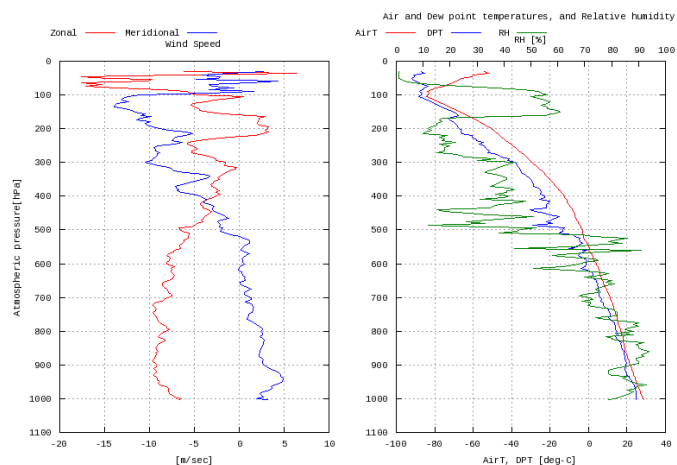


— ... Observation Line — ... Navigation ● ... Observation, Dive Point, Hole

### Figures

13061212

MR13-03 Leg2: 13061212  
Radiosonde



### Data List

☐ File names

☐ 13061212.dat

☐ 13061215.dat

☐ 13061218.dat

☐ 13061221.dat

☐ 13061300.dat

☐ 13061303.dat

☐ 13061306.dat

☐ 13061309.dat

☐ 13061312.dat

☐ 13061315.dat

☐ 13061318.dat

☐ 13061321.dat

☐ 13061400.dat

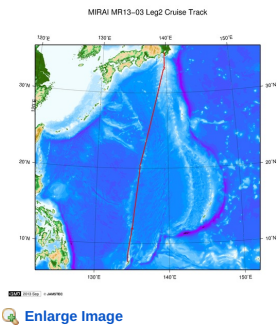
☐ 13061403.dat

<input type="checkbox"/>	Filename
<input type="checkbox"/>	13061409.dat
<input type="checkbox"/>	13061412.dat
<input type="checkbox"/>	13061415.dat
<input type="checkbox"/>	13061418.dat
<input type="checkbox"/>	13061421.dat
<input type="checkbox"/>	13061500.dat
<input type="checkbox"/>	13061503.dat
<input type="checkbox"/>	13061506.dat
<input type="checkbox"/>	13061509.dat
<input type="checkbox"/>	13061512.dat
<input type="checkbox"/>	13061515.dat
<input type="checkbox"/>	13061518.dat
<input type="checkbox"/>	13061520.dat
<input type="checkbox"/>	13061521.dat
<input type="checkbox"/>	13061600.dat
<input type="checkbox"/>	13061603.dat
<input type="checkbox"/>	13061606.dat
<input type="checkbox"/>	13061609.dat
<input type="checkbox"/>	13061612.dat
<input type="checkbox"/>	13061615.dat
<input type="checkbox"/>	13061618.dat
<input type="checkbox"/>	13061621.dat
<input type="checkbox"/>	13061700.dat
<input type="checkbox"/>	13061703.dat
<input type="checkbox"/>	13061706.dat
<input type="checkbox"/>	13061709.dat
<input type="checkbox"/>	13061712.dat
<input type="checkbox"/>	13061715.dat
<input type="checkbox"/>	13061718.dat
<input type="checkbox"/>	13061721.dat
<input type="checkbox"/>	13061800.dat
<input type="checkbox"/>	13061803.dat
<input type="checkbox"/>	13061806.dat
<input type="checkbox"/>	13061809.dat
<input type="checkbox"/>	13061812.dat
<input type="checkbox"/>	13061815.dat
<input type="checkbox"/>	13061818.dat
<input type="checkbox"/>	13061821.dat
<input type="checkbox"/>	13061900.dat
<input type="checkbox"/>	13061903.dat
<input type="checkbox"/>	13061906.dat
<input type="checkbox"/>	13061909.dat
<input type="checkbox"/>	13061912.dat
<input type="checkbox"/>	13061915.dat
<input type="checkbox"/>	13061918.dat
<input type="checkbox"/>	13061921.dat
<input type="checkbox"/>	13062000.dat
<input type="checkbox"/>	13062003.dat
<input type="checkbox"/>	13062006.dat
<input type="checkbox"/>	13062009.dat
<input type="checkbox"/>	13062012.dat
<input type="checkbox"/>	13062015.dat
<input type="checkbox"/>	13062018.dat
<input type="checkbox"/>	13062021.dat
<input type="checkbox"/>	13062100.dat
<input type="checkbox"/>	13062103.dat
<input type="checkbox"/>	13062106.dat
<input type="checkbox"/>	13062109.dat
<input type="checkbox"/>	13062112.dat
<input type="checkbox"/>	13062115.dat
<input type="checkbox"/>	13062118.dat
<input type="checkbox"/>	13062121.dat
<input type="checkbox"/>	13062200.dat
<input type="checkbox"/>	13062203.dat
<input type="checkbox"/>	13062206.dat
<input type="checkbox"/>	13062209.dat
<input type="checkbox"/>	13062212.dat
<input type="checkbox"/>	13062215.dat
<input type="checkbox"/>	13062218.dat
<input type="checkbox"/>	13062221.dat
<input type="checkbox"/>	13062300.dat
<input type="checkbox"/>	13062303.dat
<input type="checkbox"/>	13062306.dat
<input type="checkbox"/>	13062309.dat
<input type="checkbox"/>	13062312.dat
<input type="checkbox"/>	13062315.dat

File name
<input type="checkbox"/> 13062319.dat
<input type="checkbox"/> 13062321.dat
<input type="checkbox"/> 13062400.dat
<input type="checkbox"/> 13062403.dat
<input type="checkbox"/> 13062406.dat
<input type="checkbox"/> 13062409.dat
<input type="checkbox"/> 13062412.dat
<input type="checkbox"/> 13062415.dat
<input type="checkbox"/> 13062418.dat
<input type="checkbox"/> 13062421.dat
<input type="checkbox"/> 13062500.dat
<input type="checkbox"/> 13062503.dat
<input type="checkbox"/> 13062506.dat
<input type="checkbox"/> 13062509.dat
<input type="checkbox"/> 13062512.dat
<input type="checkbox"/> 13062515.dat
<input type="checkbox"/> 13062518.dat
<input type="checkbox"/> 13062521.dat
<input type="checkbox"/> 13062600.dat
<input type="checkbox"/> 13062603.dat
<input type="checkbox"/> 13062606.dat
<input type="checkbox"/> 13062609.dat
<input type="checkbox"/> 13062612.dat
<input type="checkbox"/> 13062615.dat
<input type="checkbox"/> 13062618.dat
<input type="checkbox"/> 13062621.dat
<input type="checkbox"/> 13062700.dat
<input type="checkbox"/> 13062703.dat
<input type="checkbox"/> 13062706.dat
<input type="checkbox"/> 13062709.dat
<input type="checkbox"/> 13062712.dat
<input type="checkbox"/> 13062715.dat
<input type="checkbox"/> 13062718.dat
<input type="checkbox"/> 13062721.dat
<input type="checkbox"/> 13062800.dat
<input type="checkbox"/> 13062803.dat
<input type="checkbox"/> 13062806.dat
<input type="checkbox"/> 13062809.dat
<input type="checkbox"/> 13062812.dat
<input type="checkbox"/> 13062815.dat
<input type="checkbox"/> 13062818.dat
<input type="checkbox"/> 13062821.dat
<input type="checkbox"/> 13062900.dat
<input type="checkbox"/> 13062903.dat
<input type="checkbox"/> 13062906.dat
<input type="checkbox"/> 13062909.dat
<input type="checkbox"/> 13062912.dat
<input type="checkbox"/> 13062915.dat
<input type="checkbox"/> 13062918.dat
<input type="checkbox"/> 13062921.dat
<input type="checkbox"/> 13063000.dat
<input type="checkbox"/> 13063003.dat
<input type="checkbox"/> 13063006.dat
<input type="checkbox"/> 13063009.dat
<input type="checkbox"/> 13063012.dat
<input type="checkbox"/> 13063015.dat
<input type="checkbox"/> 13063018.dat
<input type="checkbox"/> 13063021.dat
<input type="checkbox"/> 13070100.dat
<input type="checkbox"/> 13070103.dat
<input type="checkbox"/> 13070106.dat
<input type="checkbox"/> 13070109.dat
<input type="checkbox"/> 13070112.dat
<input type="checkbox"/> 13070118.dat
<input type="checkbox"/> 13070200.dat
<input type="checkbox"/> 13070206.dat

#### Related Information





#### MR13-03 Leg2

Ship Name: MIRAI

Period: 2013-06-12 - 2013-07-06

Chief Scientist: Masaki Katsumata (JAMSTEC)

Project Name: [MJO Research]

Proposal ▶ Observational Study on the Intreseasonal Variability over the western Pacific

Title:

#### Update History

2015-08-26	An observation data was registerd.
------------	------------------------------------

#### JAMSTEC

Site Policy

Privacy Policy

Application for Data and

Samples

Data Policy

#### What's New

Update History

Feeds

#### Lists

Publication List

Amount of Public Info.

#### Data

Map Search

Data Tree

Detailed Search

#### Information of the Ships

NATSUSHIMA

KAIYO

YOKOSUKA

MIRAI

KAIREI

CHIKYU

KAIMEI

SHINSEI MARU

HAKUHO MARU

#### Information of the Submersibles

KAIKO

SHINKAI 2000

SHINKAI 6500

DEEP TOW

HYPER-DOLPHIN

URASHIMA

YOKOSUKA DEEP TOW

6K Camera DEEP TOW

6K Sonar DEEP TOW

KM-ROV

POWER GRAB SAMPLER

(SHELL)

POWER GRAB SAMPLER

(CLOW)

BMS

#### Go to a Cruise Information

Cruise ID:

Go

#### Go to a Dive Information

Dive ID:

Go

Copyright 2011 Japan Agency for Marine-Earth Science and Technology



**JAMSTEC** 国立研究開発法人  
海洋研究開発機構  
JAPAN AGENCY FOR MARINE-EARTH SCIENCE AND TECHNOLOGY