

MIRAI MR08-05 CFCs data

Last Modified: 2018-09-28

[ReadMe](#) [Observation Data](#)

Cruise ID: [MR08-05](#)

CFCs data: Processed (PI)

Data Policy: [JAMSTEC](#)

Observation Items:

Science Keywords:

Data Information

Results of Chlorofluorocarbons (CFCs) analysis on seawater collected by a Sea Bird Electronics 36 position carousel equipped 12 liter Niskin X water sample bottles (including CTD data)

Cruise Report

http://www.godac.jamstec.go.jp/catalog/data/doc_catalog/media/MR08-05_all.pdf

For Using Data

Principal Investigator

Masahide Wakita (JAMSTEC)

Kenichi Sasaki (JAMSTEC)

Use Constraints

Please contact PI (Masahide Wakita: mwakita@jamstec.go.jp, Kenichi Sasaki: ksasaki@jamstec.go.jp)

Data Citation

Please contact PI (Masahide Wakita: mwakita@jamstec.go.jp, Kenichi Sasaki: ksasaki@jamstec.go.jp)

Instrument

Instrument:

Gas chromatograph with an electron capture detector (ECD) attached with a purging & trapping system

Instrument Information:

Gas Chromatograph : GC-14B

(Shimadzu Ltd.), Detector : ECD-14

(Shimadzu Ltd), Purging & trapping :

Developed in JAMSTEC



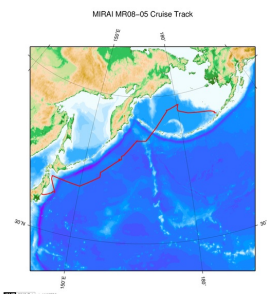
Sample

Seawater

Data Format

Excel file

Related Information



[Enlarge Image](#)

MR08-05

Ship Name: MIRAI

Period: 2008-10-11 - 2008-11-07

Chief Scientist: Makio Honda (JAMSTEC)

Project Name: [Station K2, Station KNOT]

Proposal ▶ The study of ecosystem and materials' cycle in the North Pacific

Title:

Update History

2018-09-28 An observation data was registerd.

JAMSTEC

[Site Policy](#)

[Privacy Policy](#)

[Application for Data and Samples](#)

[Data Policy](#)

[Data Tree](#)

[Detailed Search](#)

[What's New](#)

[Update History](#)

Lists

[Publication List](#)

[Amount of Public Info.](#)

Data

[Map Search](#)

[Data Tree](#)

[Detailed Search](#)

Information of the Ships

[NATSUSHIMA](#)

[KAIYO](#)

[YOKOSUKA](#)

[MIRAI](#)

[KAIREI](#)

[CHIKYU](#)

[KAIMEI](#)

[SHINSEI MARU](#)

Information of the Submersibles

[KAIKO](#)

[SHINKAI 2000](#)

[SHINKAI 6500](#)

[DEEP TOW](#)

[HYPER-DOLPHIN](#)

[URASHIMA](#)

[YOKOSUKA DEEP TOW](#)

Go to a Cruise Information

Cruise ID:

Go to a Dive Information

Dive ID:

Feeds

HAKUHO MARU

6K Camera DEEP TOW
6K Sonar DEEP TOW
KM-ROV
POWER GRAB SAMPLER
(SHELL)
POWER GRAB SAMPLER
(CLOW)
BMS

Copyright 2011 Japan Agency for Marine-Earth Science and
Technology



JAMSTEC 国立研究開発法人
海洋研究開発機構
JAPAN AGENCY FOR MARINE-EARTH SCIENCE AND TECHNOLOGY

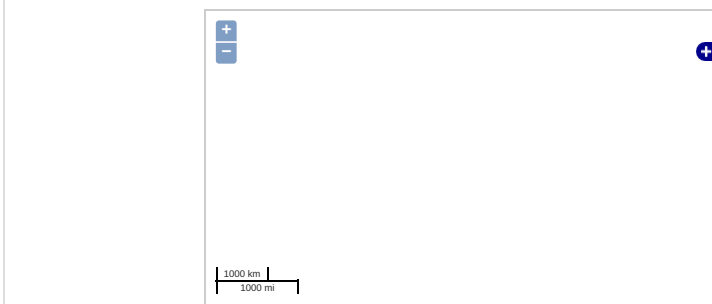
MIRAI MR08-05 CFCs data

Last Modified: 2018-09-28

[ReadMe](#) [Observation Data](#)

Cruise ID: **MR08-05**
CFCs data: Processed (PI)
Data Policy: [JAMSTEC](#)
Observation Items:
Science Keywords:

Observation Map



... Observation Line ... Navigation ... Observation, Dive Point, Hole

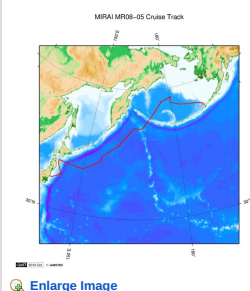
Data List

[Add to Basket](#)

File names

MR0805_CFCs.xls

Related Information



[Enlarge Image](#)

MR08-05

Ship Name: MIRAI
Period: 2008-10-11 - 2008-11-07
Chief Scientist: Makio Honda (JAMSTEC)
Project Name: [Station K2.Station KNOT]
Proposal ▶ The study of ecosystem and materials' cycle in the North Pacific
Title:

Update History

2018-09-28 An observation data was registerd.

JAMSTEC

[Site Policy](#)
[Privacy Policy](#)
[Application for Data and Samples](#)
[Data Policy](#)

[What's New](#)
[Update History](#)
[Feeds](#)

Lists

[Publication List](#)
[Amount of Public Info.](#)

[Data](#)
[Map Search](#)
[Data Tree](#)
[Detailed Search](#)

Information of the Ships

NATSUSHIMA
KAIYO
YOKOSUKA
MIRAI
KAIREI
CHIKYU
KAIMEI
SHINSEI MARU
HAKUHO MARU

Information of the Submersibles

KAIKO
SHINKAI 2000
SHINKAI 6500
DEEP TOW
HYPER-DOLPHIN
URASHIMA
YOKOSUKA DEEP TOW
6K Camera DEEP TOW
6K Sonar DEEP TOW
KM-ROV
POWER GRAB SAMPLER (SHELL)
POWER GRAB SAMPLER (CLOW)
BMS

Go to a Cruise Information

Cruise ID:

Go to a Dive Information

Dive ID: