

For Using Data

Principal Investigator Fumiyoshi Kondo (Japan Coast Guard Academy)
Use Constraints It is recommended to contact the above investigator before use for publication.
Data Citation It is recommended to contact the above investigator before use for publication.

Quality level

Processed (PI)

Instrument

Sonic Anemometer Thermometer (Gill, Windmaster)
Open-Path Gas Analyzer (LI-COR, LI-7500)

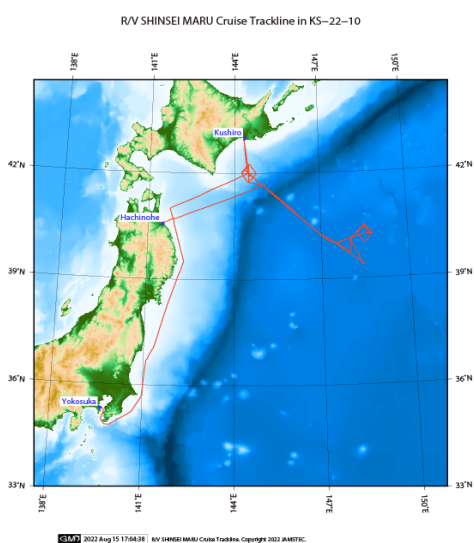
**Overview**

Air-Sea Momentum, sensible heat and latent heat fluxes by eddy covariance technique.

Data format

Text format. See the header of the data files for more details.

Related Information



KS-22-10

Ship Name:

SHINSEI MARU

Period:

2022/07/15 - 2022/08/02

Chief Scientist:

Yoshimi Kawai (JAMSTEC)

Proposal:

Simultaneous observations with an aircraft on marine aerosols and their effects on cloud microphysics in the Northwestern Pacific