

MIRAI MR13-03 Leg2 Sea-surface Photosynthetically Active Radiation (PAR)

Last Modified: 2017-11-09

[ReadMe](#) [Observation Data](#) [Data Format](#)

Cruise ID: [MR13-03 Leg2](#)

Sea-surface Photosynthetically Active Radiation (PAR) : Raw

Data Policy: [JAMSTEC](#)

Observation Items:

Science Keywords:

OCEANS > OCEAN OPTICS > PHOTOSYNTHETICALLY ACTIVE RADIATION

Cruise Report

http://www.godac.jamstec.go.jp/catalog/data/doc_catalog/media/MR13-03_leg1-2_all.pdf

For Using Data

Principal Investigator

Data Management Office

Use Constraints

See [Terms and Conditions](#) about constrain of use.

Data Citation

See [Terms and Conditions](#) about data citation.

Period (UTC)

2013-06-12 05:50 – 2013-07-06 00:00

Instrument

Instrument:

Surface Photosynthetically available radiation (PAR) (~MR15-E01)



Overview

Photosynthetically available radiation (PAR) in the air was acquired by the radiometer PUV-510B, which was set up on the deck of the anti-rolling system .

Specifications

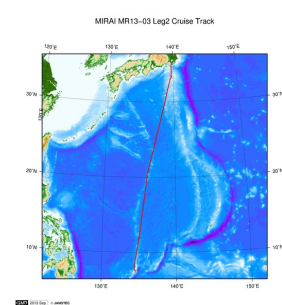
Manufacturer:	Biospherical Instruments Inc.
Type:	PUV-510B
Logging rate:	6 [second]
Location:	Starboard side of the deck on the anti-rolling system (18m from the sea surface)
Measurement wavelength:	400 - 700 [nm] (PAR)

Note

File naming rule for PAR_YYYYMMDD.txt.

PAR_ :	Fixed as 'PAR_'
YYYY :	Recording start Year (UTC)
MM :	Recording start month (UTC)
DD :	Recording start day (UTC)

Related Information



 [Enlarge Image](#)

[MR13-03 Leg2](#)

Ship Name: MIRAI
Period: 2013-06-12 - 2013-07-06
Chief Scientist: Masaki Katsumata (JAMSTEC)
Project Name: [MJO Research]
Proposal ▶ Observational Study on the Intreseasonal Variability over the western Pacific
Title:

Update History

2017-11-09	An observation data was registerd.
2015-03-31	An observation data was registerd.

[Privacy Policy](#)
[Application for Data and Samples](#)
[Data Policy](#)

[What's New](#)
[Update History](#)
[Feeds](#)

[Amount of Public Info.](#)

[Data](#)
[Map Search](#)
[Data Tree](#)
[Detailed Search](#)

[KAIYO](#)
[YOKOSUKA](#)
[MIRAI](#)
[KAIREI](#)
[CHIKYU](#)
[KAIMEI](#)
[SHINSEI MARU](#)
[HAKUHO MARU](#)

[KAIKO](#)
[SHINKAI 2000](#)
[SHINKAI 6500](#)
[DEEP TOW](#)
[HYPER-DOLPHIN](#)
[URASHIMA](#)
[YOKOSUKA DEEP TOW](#)
[6K Camera DEEP TOW](#)
[6K Sonar DEEP TOW](#)
[KM-ROV](#)
[POWER GRAB SAMPLER \(SHELL\)](#)
[POWER GRAB SAMPLER \(CLOW\)](#)
[BMS](#)

Cruise ID:

[Go to a Dive Information](#)

Dive ID:

Copyright 2011 Japan Agency for Marine-Earth Science and Technology



JAMSTEC
JAPAN AGENCY FOR MARINE-EARTH SCIENCE AND TECHNOLOGY

国立研究開発法人
海洋研究開発機構

MIRAI MR13-03 Leg2 Sea-surface Photosynthetically Active Radiation (PAR)

Last Modified: 2017-11-09

[ReadMe](#) [Observation Data](#) [Data Format](#)

Cruise ID: [MR13-03 Leg2](#)

Sea-surface Photosynthetically Active Radiation (PAR) Raw

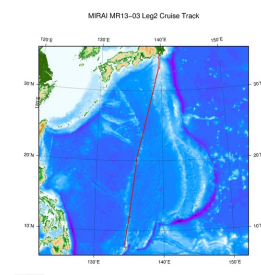
Data Policy: [JAMSTEC](#)

Sea-surface PAR

Comma Separated Value

Column No.	Content	Remarks
1	DATE	Year, Month Day [YYYYMMDD]
2	TIME	Hour, Minute, Second [hhmmss]
3	PAR	PAR (Variable length, Floating-point, Exponential Form) [microEinsteins/cm^2/sec]

Related Information



[Enlarge Image](#)

MR13-03 Leg2

Ship Name: MIRAI

Period: 2013-06-12 - 2013-07-06

Chief Scientist: Masaki Katsumata (JAMSTEC)

Project Name: [MJO Research]

Proposal ▶ Observational Study on the Intreseasonal Variability over the western Pacific

Title:

Update History

2017-11-09	An observation data was registerd.
2015-03-31	An observation data was registerd.

JAMSTEC

[Site Policy](#)
[Privacy Policy](#)
[Application for Data and Samples](#)
[Data Policy](#)

[What's New](#)
[Update History](#)
[Feeds](#)

[Lists](#)
[Publication List](#)
[Amount of Public Info.](#)

[Data](#)
[Map Search](#)
[Data Tree](#)
[Detailed Search](#)

[Information of the Ships](#)
[NATSUSHIMA](#)
[KAIYO](#)
[YOKOSUKA](#)
[MIRAI](#)
[KAIREI](#)
[CHIKYU](#)
[KAIMEI](#)
[SHINSEI MARU](#)
[HAKUHO MARU](#)

[Information of the Submersibles](#)
[KAIKO](#)
[SHINKAI 2000](#)
[SHINKAI 6500](#)
[DEEP TOW](#)
[HYPER-DOLPHIN](#)
[URASHIMA](#)
[YOKOSUKA DEEP TOW](#)
[6K Camera DEEP TOW](#)
[6K Sonar DEEP TOW](#)
[KM-ROV](#)
[POWER GRAB SAMPLER \(SHELL\)](#)
[POWER GRAB SAMPLER \(CLOW\)](#)
[BMS](#)

Go to a Cruise Information

Cruise ID:

Go to a Dive Information

Dive ID:

MIRAI MR13-03 Leg2 Sea-surface Photosynthetically Active Radiation (PAR)

Last Modified: 2017-11-09

[ReadMe](#) [Observation Data](#) [Data Format](#)

Cruise ID: [MR13-03 Leg2](#)

Sea-surface Photosynthetically Active Radiation (PAR) : Raw

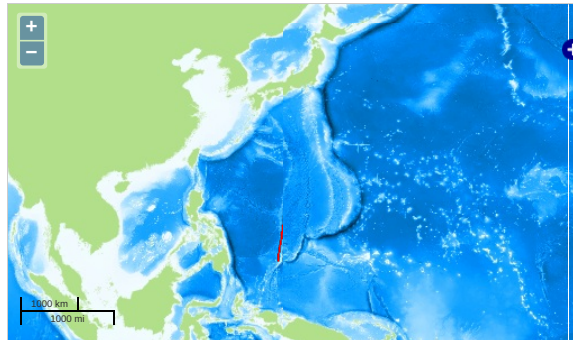
Data Policy: [JAMSTEC](#)

Observation Items:

Science Keywords:

OCEANS > OCEAN OPTICS > PHOTOSYNTHETICALLY ACTIVE RADIATION

Observation Map



Imagery reproduced from ...

... Observation Line ... Navigation ... Observation, Dive Point, Hole

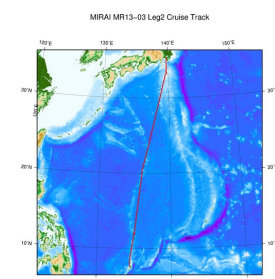
Data List

[Add to Basket](#)

File names

- ☐ PAR_20130612.txt
- ☐ PAR_20130613.txt
- ☐ PAR_20130614.txt
- ☐ PAR_20130615.txt
- ☐ PAR_20130616.txt
- ☐ PAR_20130617.txt
- ☐ PAR_20130618.txt
- ☐ PAR_20130619.txt
- ☐ PAR_20130620.txt
- ☐ PAR_20130621.txt
- ☐ PAR_20130622.txt
- ☐ PAR_20130623.txt
- ☐ PAR_20130624.txt
- ☐ PAR_20130625.txt
- ☐ PAR_20130626.txt
- ☐ PAR_20130627.txt
- ☐ PAR_20130628.txt
- ☐ PAR_20130629.txt
- ☐ PAR_20130630.txt
- ☐ PAR_20130701.txt
- ☐ PAR_20130702.txt
- ☐ PAR_20130703.txt
- ☐ PAR_20130704.txt
- ☐ PAR_20130705.txt

Related Information



[Enlarge Image](#)

MR13-03 Leg2

Ship Name: MIRAI

Period: 2013-06-12 - 2013-07-06

Chief Scientist: Masaki Katsumata (JAMSTEC)

Project Name: [MJO Research]

Proposal ▶ Observational Study on the Intreseasonal Variability over the western Pacific

Title:

Update History	
2017-11-09	An observation data was registerd.
2015-03-31	An observation data was registerd.

JAMSTEC

[Site Policy](#)
[Privacy Policy](#)
[Application for Data and Samples](#)
[Data Policy](#)

[What's New](#)
[Update History](#)
[Feeds](#)

Lists

[Publication List](#)
[Amount of Public Info.](#)

Data

[Map Search](#)
[Data Tree](#)
[Detailed Search](#)

Information of the Ships

[NATSUSHIMA](#)
[KAIYO](#)
[YOKOSUKA](#)
[MIRAI](#)
[KAIREI](#)
[CHIKYU](#)
[KAIMEI](#)
[SHINSEI MARU](#)
[HAKUHO MARU](#)

Information of the Submersibles

[KAIKO](#)
[SHINKAI 2000](#)
[SHINKAI 6500](#)
[DEEP TOW](#)
[HYPER-DOLPHIN](#)
[URASHIMA](#)
[YOKOSUKA DEEP TOW](#)
[6K Camera DEEP TOW](#)
[6K Sonar DEEP TOW](#)
[KM-ROV](#)
[POWER GRAB SAMPLER \(SHELL\)](#)
[POWER GRAB SAMPLER \(CLOW\)](#)
[BMS](#)

Go to a Cruise Information

Cruise ID:

Go to a Dive Information

Dive ID:

Copyright 2011 Japan Agency for Marine-Earth Science and Technology



JAMSTEC 国立研究開発法人
 海洋研究開発機構
JAPAN AGENCY FOR MARINE-EARTH SCIENCE AND TECHNOLOGY