

SHINSEI MARU KS-19-7 Shipboard Three Component Magnetometer (STCM)

Last Modified: 2021-05-10

[ReadMe](#) [Observation Data](#) [Data Format](#)

Cruise ID: [KS-19-7](#)

Shipboard Three Component Magnetometer (STCM): Processed (DMO)-Corrected

Data Policy: [JURCAOS-JAMSTEC](#)

Observation Items: X, Y and Z component of geomagnetic field anomaly, Absolute value of geomagnetic field anomaly

Science Keywords:

OCEANS > MARINE GEOPHYSICS > MARINE MAGNETICS
SOLID EARTH > GEOMAGNETISM

Cruise Report

http://www.godac.jamstec.go.jp/catalog/data/doc_catalog/media/KS-19-7_all.pdf

For Using Data

Principal Investigator

Data Management Office

Use Constraints

See [Terms and Conditions](#) about constrain of use.

Data Citation

See [Terms and Conditions](#) about data citation.

Period (UTC)

2019-05-05 05:09 – 2019-05-10 00:28
2019-05-01 05:09 – 2019-05-05 00:42

Instrument

Instrument:

Three component magnetometer



Overview

The data provided is for corrected three component geomagnetic field anomalies. Three-axes flux-gate sensors with ring-cored coils were fixed on the roof of the bridge.

They measure the following items :

h-component : along track line component, positive for the bow direction pitch.

s-component : across track line component, positive for the starboard side roll.

v-component : vertical component, positive for the downward direction.

The effect of ship motion was eliminated by roll and pitch data which was provided by a tilt sensor. The apparent magnetic influence can be detected through a "Figure of 8 turn"(a pair of clockwise and anti-clockwise turns) on each cruise. If no Figure of 8 turn on the cruise was completed, the latest Figure of 8 turn from the previous cruise was applied. As a quality control, data of low reliability was removed (see Data processing for quality control criteria). Synthetic geomagnetic field values were calculated from IGRF models.

Measurement System

(1) Magnetometer

Manufacturer : Tierra Technica Ltd.

Type : SFG-2009

Measurement range : $\pm 100,000$ nT

Accuracy : less than ± 200 nT

Resolution : 0.01 nT

Location : No.1 Laboratory

(2) Magnetic Sensor

Manufacturer : Tierra Technica Ltd.

Form : flux-gate sensors with ring-cored coils

Location : Compass deck

(3) Attitude sensor and Gyro compass

Manufacturer : IXBLUE

Type : PHINS

Accuracy(Roll, Pitch) : 0.01 degree

Accuracy(Gyro) : 0.01 degree *Secant(Lat.)

Location : Gravity meter room

Duration of the Figure of 8 turn

In KS-20-17 cruise

Date (UTC)

2020/10/19 09:48:00 - 2020/10/19 10:12:00

2020/10/27 19:18:00 - 2020/10/27 19:41:00

Data processing

The following corrections and calculations were performed.

(1) Ship magnetization correction

$$Hob = ARPYF + Hp \text{ ---(i)}$$

Hob : Observed magnetic field vector (Ship coordinates)

A : Effect of induced magnetization of the ship

R : Matrix of rotation due to the roll

P : Matrix of rotation due to the pitch

Y : Matrix of rotation due to the heading

F : Geomagnetic field vector

Hp : Ship's permanent magnetic moment

Following the equation(i), we calculate the geomagnetic field F.

$$RPYF = BHob + Hpb \text{ ---(ii)}$$

B : coefficient of Figure of 8 turn

Hpb : Permanent magnetic field vector of the ship

Reference : Isezaki,N., A new shipboard three-component magnetometer, GEOPHYSICS. VOL.51,NO10(1986);P1992-1998

(2) International Geomagnetic Reference Field (IGRF)

Synthetic geomagnetic field values are calculated from IGRF 13th Generation models by using navigation data ; latitude, longitude and date.

Reference : IAGA Division V-MOD Geomagnetic Field Modeling[<http://www.ngdc.noaa.gov/IAGA/vmod/igrf.html>]

(3) Calculation of the geomagnetic field anomaly

$$An = F - Figrf$$

An : Geomagnetic field anomaly vector

F : Geomagnetic field vector

Figrf : Synthetic geomagnetic field vector from IGRF

(4) Quality control of data

Following criteria were used for removal of data of low reliability:

- Time error (inversion of time, continuation of same timestamps)
- Summation of the difference of heading by one second exceeding 20 degree per 5 minutes
- Ground speed of the ship below 3knot or exceeding 20knot
- X, Y, or Z component of geomagnetic field anomaly exceeding ± 4000 nT

(5) Filtering of the geomagnetic field anomaly

Due to the residual undulation of the ship, a 120 second length Gaussian filter was applied for each component of the geomagnetic field anomaly data.

(6) Output of the data

Time (UTC)

Latitude (degree)

Longitude (degree)

X : Northward (positive on the north) component of geomagnetic field anomaly (nT)

Y : Eastward (positive on the east) component of geomagnetic field anomaly (nT)

Z : Vertical (positive for downward) component of geomagnetic field anomaly (nT)

T : Absolute value of geomagnetic field anomaly (nT)

Coefficient of the Figure of 8 turn and Permanent magnetic field vector of the ship

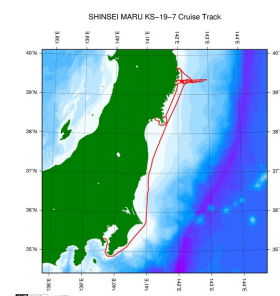
This coefficient was calculated from the above-mentioned Figure of 8 turn

	1.0721	-0.0058	-0.0427		-2674.5747
B=	-0.0004	1.1304	-0.0066	Hpb=	-643.1703
	0.0104	-0.0266	0.8711		-5306.1228

Note

- (1) File naming rule : Cruise ID_corr.stcm
- (2) Sampling rate : 10 seconds
- (3) Geodetic system : WGS84
- (4) If you would like the raw data set, please contact us from "Contact Us" above.

Related Information



[Enlarge Image](#)

KS-19-7

Ship Name: SHINSEI MARU

Period: 2019-05-01 - 2019-05-10

Chief Scientist: Toshi Nagata (The University of Tokyo)

Project Name: [Tohoku Ecosystem-Associated Marine Sciences (TEAMS)]

Proposal Title: Research on the disturbance and recovery process of the ecosystem in Sanriku coastal area after the Tsunami

Update History

2021-05-10 An observation data was registerd.

JAMSTEC
Site Policy
Privacy Policy
Application for Data and Samples

Lists
Publication List
Amount of Public Info.
Data

Information of the Ships
NATSUSHIMA
KAIYO
YOKOSUKA

Information of the Submersibles
KAIKO
SHINKAI 2000
SHINKAI 6500

Go to a Cruise Information

Cruise ID:

[Data Policy](#)

What's New
[Update History](#)
[Feeds](#)

[Map Search](#)
[Data Tree](#)
[Detailed Search](#)

[MIRAI](#)
[KAIREI](#)
[CHIKYU](#)
[KAIMEI](#)
[SHINSEI MARU](#)
[HAKUHO MARU](#)

[DEEP TOW](#)
[HYPER-DOLPHIN](#)
[URASHIMA](#)
[YOKOSUKA DEEP TOW](#)
[6K Camera DEEP TOW](#)
[6K Sonar DEEP TOW](#)
[KM-ROV](#)
[POWER GRAB SAMPLER \(SHELL\)](#)
[POWER GRAB SAMPLER \(CLOW\)](#)
[BMS](#)

Go to a Dive Information

Dive ID:



Go

Copyright 2011 Japan Agency for Marine-Earth Science and Technology



JAMSTEC
JAPAN AGENCY FOR MARINE EARTH SCIENCE AND TECHNOLOGY

国立研究開発法人
海洋研究開発機構

SHINSEI MARU KS-19-7 Shipboard Three Component Magnetometer (STCM)

Last Modified: 2021-05-10

[ReadMe](#) [Observation Data](#) [Data Format](#)

Cruise ID: [KS-19-7](#)

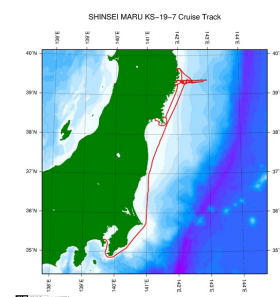
Shipboard Three Component Magnetometer (STCM): Processed (DMO)-Corrected

Data Policy: [JURCAOS-JAMSTEC](#)

STCM Corrected

No.	Column	Content	Format	Unit	Remarks
1	1 - 8	Date	i4,i2,i2		YYYYMMDD (UTC)
2	10 -15	Time	i2,i2,i2		hhmmss (UTC)
3	17 -25	Latitude	f9.5	degree	No sign for the northern hemisphere. Negative for the southern hemisphere.
4	27 -36	Longitude	f10.5	degree	No sign for eastern hemisphere. Negative for the western hemisphere.
5	38 -43	X component of geomagnetic field anomaly	f6.0	nT	Positive on the north
6	45 -50	Y component of geomagnetic field anomaly	f6.0	nT	Positive on the east
7	52 -57	Z component of geomagnetic field anomaly	f6.0	nT	Positive for downward
8	59 -64	Absolute value of geomagnetic field anomaly	f6.0	nT	

Related Information



[Enlarge Image](#)

KS-19-7

Ship Name: SHINSEI MARU

Period: 2019-05-01 - 2019-05-10

Chief Scientist: Toshi Nagata (The University of Tokyo)

Project Name: [Tohoku Ecosystem-Associated Marine Sciences (TEAMS)]

Proposal Title: Research on the disturbance and recovery process of the ecosystem in Sanriku coastal area after the Tsunami

Update History

2021-05-10 An observation data was registerd.

JAMSTEC

[Site Policy](#)

[Privacy Policy](#)

[Application for Data and Samples](#)

[Data Policy](#)

[What's New](#)

[Update History](#)

[Feeds](#)

Lists

[Publication List](#)

[Amount of Public Info.](#)

Data

[Map Search](#)

[Data Tree](#)

[Detailed Search](#)

Information of the Ships

[NATSUSHIMA](#)

[KAIYO](#)

[YOKOSUKA](#)

[MIRAI](#)

[KAIREI](#)

[CHIKYU](#)

[KAIMEI](#)

[SHINSEI MARU](#)

[HAKUHO MARU](#)

Information of the Submersibles

[KAIKO](#)

[SHINKAI 2000](#)

[SHINKAI 6500](#)

[DEEP TOW](#)

[HYPER-DOLPHIN](#)

[URASHIMA](#)

[YOKOSUKA DEEP TOW](#)

[6K Camera DEEP TOW](#)

[6K Sonar DEEP TOW](#)

[KM-ROV](#)

[POWER GRAB SAMPLER \(SHELL\)](#)

[POWER GRAB SAMPLER \(CLOW\)](#)

[BMS](#)

Go to a Cruise Information

Cruise ID:

Go to a Dive Information

Dive ID:

SHINSEI MARU KS-19-7 Shipboard Three Component Magnetometer (STCM)

Last Modified: 2021-05-10

[ReadMe](#) [Observation Data](#) [Data Format](#)

Cruise ID: **KS-19-7**

Shipboard Three Component Magnetometer (STCM): Processed (DMO)-Corrected

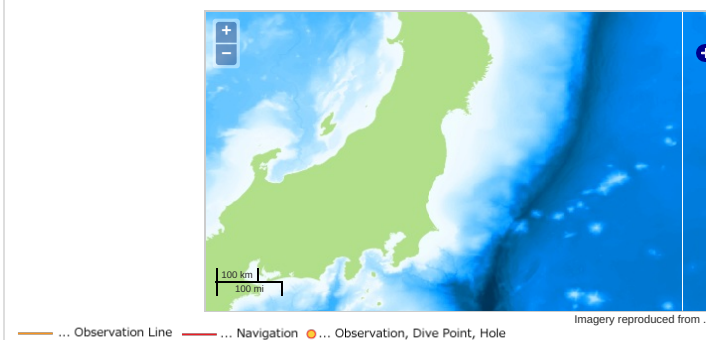
Data Policy: [JURCAOS-JAMSTEC](#)

Observation Items: X, Y and Z component of geomagnetic field anomaly, Absolute value of geomagnetic field anomaly

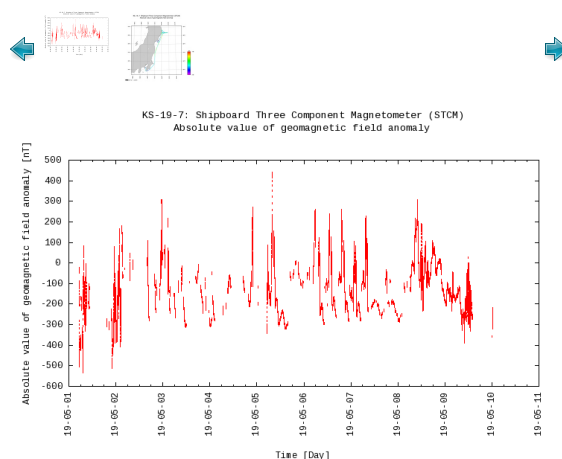
Science Keywords:

OCEANS > MARINE GEOPHYSICS > MARINE MAGNETICS
SOLID EARTH > GEOMAGNETISM

Observation Map



Figures



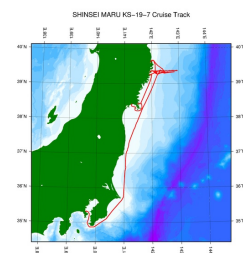
Data List

[Add to Basket](#)

File names

☐ KS-19-7_corr.stcm

Related Information



[Enlarge Image](#)

KS-19-7

Ship Name: SHINSEI MARU

Period: 2019-05-01 - 2019-05-10

Chief Scientist: Toshi Nagata (The University of Tokyo)

Project Name: [Tohoku Ecosystem-Associated Marine Sciences (TEAMS)]

Proposal Research on the disturbance and recovery process of the ecosystem in Sanriku coastal area

Title: after the Tsunami

Update History

2021-05-10 An observation data was registered.

Application for Data and
Samples
Data Policy

What's New
Update History
Feeds

Data
Map Search
Data Tree
Detailed Search

YOKOSUKA
MIRAI
KAIREI
CHIKYU
KAIMEI
SHINSEI MARU
HAKUHO MARU

SHINKAI 6500
DEEP TOW
HYPER-DOLPHIN
URASHIMA
YOKOSUKA DEEP TOW
6K Camera DEEP TOW
6K Sonar DEEP TOW
KM-ROV
POWER GRAB SAMPLER
(SHELL)
POWER GRAB SAMPLER
(CLOW)
BMS

Go to a Dive Information

Dive ID:

Go

Copyright 2011 Japan Agency for Marine-Earth Science and Technology



JAMSTEC

国立研究開発法人
海洋研究開発機構
JAPAN AGENCY FOR MARINE-EARTH SCIENCE AND TECHNOLOGY