

SHINSEI MARU KS-19-20 Conductivity-Temperature-Depth Profiler (CTD)

Last Modified: 2021-02-15

[ReadMe](#) [Observation Data](#)

Cruise ID: [KS-19-20](#)

Conductivity-Temperature-Depth Profiler (CTD) Processed (PI)

Data Policy: [JURCAOS-JAMSTEC](#)

Observation Items:

Science Keywords:

Data Information

CTD observation by Shinsei-maru.

Data are averaged per meter, except for 3 stations (B08, B10, and B12) where data are averaged per dbr. Erroneous data were filtered out.
Time zone is UTC.

Sensors are calibrated annually by the Sea-Bird Electronics, Inc.

Software

Data acquisition software: Sea-Bird Electronics, Inc., SEASAVE (ver 7.21f)

Data processing software: Sea-Bird Electronics, Inc., SBE Data Processing (ver 7.21)

For Using Data

Principal Investigator

Hideki Fukuda (The University of Tokyo)

Use Constraints

See [Terms and Conditions](#) about constrain of use.

Data Citation

See [Terms and Conditions](#) about data citation.

Instrument

Instrument:

Sea-Bird Electronics, Inc., SBE9

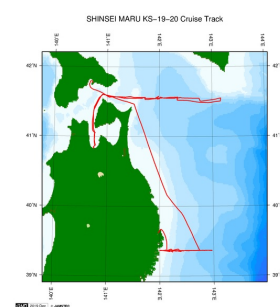
Instrument Information:



Data Format

microsoft excel format.

Related Information



[Enlarge Image](#)

KS-19-20

Ship Name: SHINSEI MARU

Period: 2019-10-08 - 2019-10-16

Chief Scientist: Toshi Nagata (The University of Tokyo)

Project Name: [Tohoku Ecosystem-Associated Marine Sciences (TEAMS)]

Proposal Research on the disturbance and recovery process of the ecosystem in Sanriku coastal area
Title: after the Tsunami

Update History

Update Date	Update Content
2021-02-15	An observation data was registerd.

JAMSTEC

[Site Policy](#)
[Privacy Policy](#)
[Application for Data and Samples](#)
[Data Policy](#)

[What's New](#)
[Update History](#)
[Feeds](#)

Lists

[Publication List](#)
[Amount of Public Info.](#)

[Data](#)
[Map Search](#)
[Data Tree](#)
[Detailed Search](#)

Information of the Ships

[NATSUSHIMA](#)
[KAIYO](#)
[YOKOSUKA](#)
[MIRAI](#)
[KAIREI](#)
[CHIKYU](#)
[KAIMEI](#)
[SHINSEI MARU](#)
[HAKUHO MARU](#)

Information of the Submersibles

[KAIKO](#)
[SHINKAI 2000](#)
[SHINKAI 6500](#)
[DEEP TOW](#)
[HYPER-DOLPHIN](#)
[URASHIMA](#)
[YOKOSUKA DEEP TOW](#)
[6K Camera DEEP TOW](#)
[6K Sonar DEEP TOW](#)
[KM-ROV](#)
[POWER GRAB SAMPLER \(SHELL\)](#)

Go to a Cruise Information

Cruise ID:

Go to a Dive Information

Dive ID:

POWER GRAB SAMPLER
(CLOW)
BMS

Copyright 2011 Japan Agency for Marine-Earth Science and
Technology



JAMSTEC 国立研究開発法人
海洋研究開発機構
JAPAN AGENCY FOR MARINE-EARTH SCIENCE AND TECHNOLOGY

SHINSEI MARU KS-19-20 Conductivity-Temperature-Depth Profiler (CTD)

Last Modified: 2021-02-15

[ReadMe](#) [Observation Data](#)

Cruise ID: **KS-19-20**

Conductivity-Temperature-Depth Profiler (CTD): Processed (PI)

Data Policy: [JURCAOS-JAMSTEC](#)

Observation Items:

Science Keywords:

Observation Map



... Observation Line ... Navigation ... Observation, Dive Point, Hole

Imagery reproduced from ...

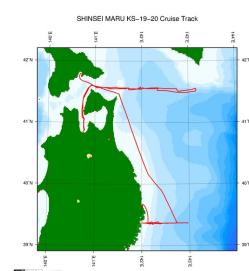
Data List

[Add to Basket](#)

File names

☐ KS_19_20_CTD.xlsx

Related Information



[Enlarge Image](#)

KS-19-20

Ship Name: SHINSEI MARU

Period: 2019-10-08 - 2019-10-16

Chief Scientist: Toshi Nagata (The University of Tokyo)

Project Name: [Tohoku Ecosystem-Associated Marine Sciences (TEAMS)]

Proposal Research on the disturbance and recovery process of the ecosystem in Sanriku coastal area

Title: after the Tsunami

Update History

2021-02-15 An observation data was registered.

JAMSTEC

[Site Policy](#)

[Privacy Policy](#)

[Application for Data and Samples](#)

[Data Policy](#)

What's New

[Update History](#)

[Feeds](#)

Lists

[Publication List](#)

[Amount of Public Info.](#)

Data

[Map Search](#)

[Data Tree](#)

[Detailed Search](#)

Information of the Ships

[NATSUSHIMA](#)

[KAIYO](#)

[YOKOSUKA](#)

[MIRAI](#)

[KAIREI](#)

[CHIKYU](#)

[KAIMEI](#)

[SHINSEI MARU](#)

[HAKUHO MARU](#)

Information of the Submersibles

[KAICO](#)

[SHINKAI 2000](#)

[SHINKAI 6500](#)

[DEEP TOW](#)

[HYPER-DOLPHIN](#)

[URASHIMA](#)

[YOKOSUKA DEEP TOW](#)

[6K Camera DEEP TOW](#)

[6K Sonar DEEP TOW](#)

[KM-ROV](#)

[POWER GRAB SAMPLER \(SHELL\)](#)

[POWER GRAB SAMPLER \(CLOW\)](#)

[BMS](#)

Go to a Cruise Information

Cruise ID:

Go to a Dive Information

Dive ID:

