

MIRAI MR08-02 Nutrients

Last Modified: 2012-10-27

[ReadMe](#) [Observation Data](#)

Cruise ID: [MR08-02](#)

Nutrients: Processed (PI)

Data Policy: [JAMSTEC](#)

Observation Items:

Science Keywords:

Data Information

Nitrate, Phosphate and Ammonium concentration in the seawater.

Cruise Report

http://www.godac.jamstec.go.jp/catalog/data/doc_catalog/media/MR08-02_all.pdf

For Using Data

Principal Investigator

Ken Furuya (University of Tokyo)

Use Constraints

None

Data Citation

None

Instrument

Instrument:

absorptiometer (USB2000)

Instrument Information:

Mesured by absorptiometer with

Autoanalyzer II



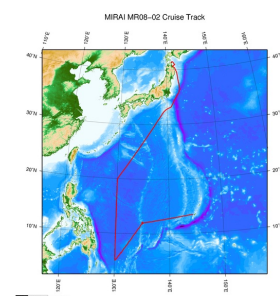
Sample

Seawater Sample

Data Format

Excel File (.xlsx format)

Related Information



[Enlarge Image](#)

MR08-02

Ship Name: MIRAI

Period: 2008-05-26 - 2008-06-30

Chief Scientist: Kunio Yoneyama (JAMSTEC)

Project Name: [MJO Research]

Proposal ▶ Observational Study on the Air-Sea Interaction in the Tropical Western Pacific Ocean

Title:

Update History

2012-10-27 An observation data was registered.

JAMSTEC

[Site Policy](#)

[Privacy Policy](#)

[Application for Data and Samples](#)

[Data Policy](#)

[What's New](#)

[Update History](#)

[Feeds](#)

Lists

[Publication List](#)

[Amount of Public Info.](#)

Data

[Map Search](#)

[Data Tree](#)

[Detailed Search](#)

Information of the Ships

[NATSUSHIMA](#)

[KAIYO](#)

[YOKOSUKA](#)

[MIRAI](#)

[KAIREI](#)

[CHIKYU](#)

[KAIMEI](#)

[SHINSEI MARU](#)

[HAKUHO MARU](#)

Information of the Submersibles

[KAIKO](#)

[SHINKAI 2000](#)

[SHINKAI 6500](#)

[DEEP TOW](#)

[HYPER-DOLPHIN](#)

[URASHIMA](#)

[YOKOSUKA DEEP TOW](#)

[6K Camera DEEP TOW](#)

[6K Sonar DEEP TOW](#)

[KM-ROV](#)

[POWER GRAB SAMPLER \(SHELL\)](#)

[POWER GRAB SAMPLER \(CLOW\)](#)

[BMS](#)

Go to a Cruise Information

Cruise ID:

Go to a Dive Information

Dive ID:



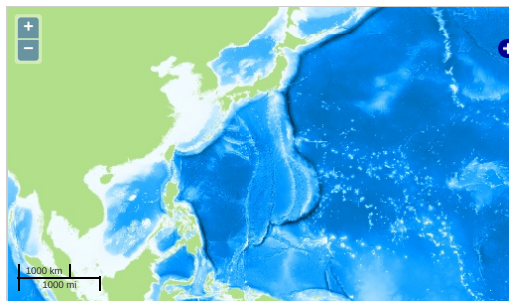
MIRAI MR08-02 Nutrients

Last Modified: 2012-10-27

[ReadMe](#) [Observation Data](#)

Cruise ID: [MR08-02](#)
Nutrients: Processed (PI)
Data Policy: [JAMSTEC](#)
Observation Items:
Science Keywords:

Observation Map



Imagery reproduced from ...

... Observation Line ... Navigation ... Observation, Dive Point, Hole

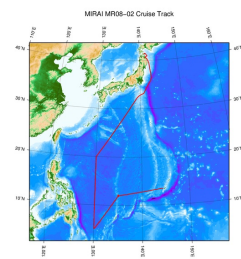
Data List

[Add to Basket](#)

File names

MR08-02_nutrients.zip

Related Information



[Enlarge Image](#)

MR08-02

Ship Name: MIRAI
Period: 2008-05-26 - 2008-06-30
Chief Scientist: Kunio Yoneyama (JAMSTEC)
Project Name: [MJO Research]
Proposal ▶ Observational Study on the Air-Sea Interaction in the Tropical Western Pacific Ocean
Title:

Update History

2012-10-27 An observation data was registerd.

JAMSTEC

[Site Policy](#)
[Privacy Policy](#)
[Application for Data and Samples](#)
[Data Policy](#)

[What's New](#)
[Update History](#)
[Feeds](#)

[Lists](#)
[Publication List](#)
[Amount of Public Info.](#)

[Data](#)
[Map Search](#)
[Data Tree](#)
[Detailed Search](#)

Information of the Ships

NATSUSHIMA
KAIYO
YOKOSUKA
MIRAI
KAIREI
CHIKYU
KAIMEI
SHINSEI MARU
HAKUHO MARU

Information of the Submersibles

KAIKO
SHINKAI 2000
SHINKAI 6500
DEEP TOW
HYPER-DOLPHIN
URASHIMA
YOKOSUKA DEEP TOW
6K Camera DEEP TOW
6K Sonar DEEP TOW
KM-ROV
POWER GRAB SAMPLER (SHELL)
POWER GRAB SAMPLER (CLOW)
BMS

Go to a Cruise Information

Cruise ID:

Go to a Dive Information

Dive ID: