

MIRAI MR13-02B Leg2 Cloud Ceiling

Last Modified: 2014-08-12

[ReadMe](#) [Observation Data](#) [Data Format](#)

Cruise ID: [MR13-02B Leg2](#)

Cloud Ceiling: Raw

Data Policy: [JAMSTEC](#)

Observation Items: Cloud base height

Science Keywords:

ATMOSPHERE > CLOUDS > CLOUD
BASE

For Using Data

Principal Investigator

Data Management Office

Use Constraints

See [Terms and Conditions](#) about constrain of use.

Data Citation

See [Terms and Conditions](#) about data citation.

Period (UTC)

2013-05-17 00:00 – 2013-05-23 01:10

Instrument

Instrument:

Ceillometer (MR13-02B -)



Overview

Ceillometer is the system that measures cloud base height by laser pulse emitted vertically.

Up to three levels of cloud base can be detected by measuring the change of strength of backscatter signal.

And the cloud base height is calculated from the elapsed time from laser pulse emission to backscatter detection.

In case the cloud base is obscured, it measures the vertical visibility.

System

Manufacturer: Vaisala Inc.
Type: CL51
Serial number: J0510004
Measurement range: up to 15000m (Backscatter measurement)
up to 13000m (Cloud detection)
Resolution: 10m
Sampling rate: 10-120 seconds available (36sec as default)
Accuracy: greater of +-1% or +-5m
Location: Compass deck bow side (18 meters high from sea surface)
Recording software: CL-VIEW Ver2.00 (after MR13-02B Leg1)

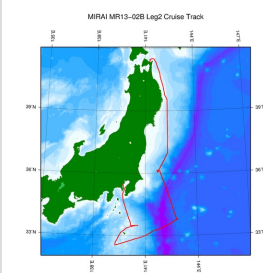
Note

(1) File naming rule for AYMMDH.DAT(CL-VIEW Ver2.00).

A : Fixed as 'A'
Y : Year in 1 digit
MM : Recording start month (UTC)
DD : Recording start day (UTC)
HH : Recording start time (UTC)

(2) Adjustment for the height : No sea surface level adjustment is applied to the raw data.

Related Information



MR13-02B Leg2

Ship Name: MIRAI
Period: 2013-05-17 - 2013-05-23
Chief Scientist: Mari Inada (JAMSTEC)
Proposal 2013 MIRAI Engineering Cruise
Title:

 [Enlarge Image](#)

Update History

2014-08-12	An observation data was registered.
2014-07-30	An observation data was registered.

[Privacy Policy](#)
[Application for Data and Samples](#)
[Data Policy](#)
What's New
[Update History](#)
[Feeds](#)

[Amount of Public Info.](#)
Data
[Map Search](#)
[Data Tree](#)
[Detailed Search](#)

[NATSUSHIMA](#)
[KAIYO](#)
[YOKOSUKA](#)
[MIRAI](#)
[KAIREI](#)
[CHIKYU](#)
[KAIMEI](#)
[SHINSEI MARU](#)
[HAKUHO MARU](#)

[KAIKO](#)
[SHINKAI 2000](#)
[SHINKAI 6500](#)
[DEEP TOW](#)
[HYPER-DOLPHIN](#)
[URASHIMA](#)
[YOKOSUKA DEEP TOW](#)
[6K Camera DEEP TOW](#)
[6K Sonar DEEP TOW](#)
[KM-ROV](#)
[POWER GRAB SAMPLER \(SHELL\)](#)
[POWER GRAB SAMPLER \(CLOW\)](#)
[BMS](#)

Cruise ID:

Go to a Dive Information

Dive ID:

Copyright 2011 Japan Agency for Marine-Earth Science and Technology



MIRAI MR13-02B Leg2 Cloud Ceiling

Last Modified: 2014-08-12

[ReadMe](#)
[Observation Data](#)
[Data Format](#)

Cruise ID: [MR13-02B Leg2](#)

Cloud Ceiling: Raw

Data Policy: [JAMSTEC](#)

Ceiling Raw

The record length of the data file is 56 bytes.

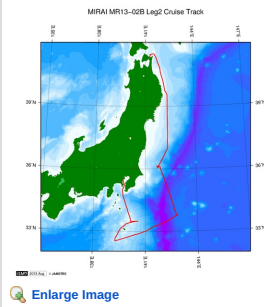
No.	Column	Content	Format	Remarks
1	1 - 8	Date	i4,i2,i2	YYYYMMDD (UTC)
2	10 - 15	Time	i2,i2,i2	hhmmss (UTC)
3	17 - 19	Operating software	a3	'CT0' : CT-VIEW 'CL0' : CL-VIEW
4	20 - 21	Software version	i2	Version of operating software
5	22	Data status	i1	1: Cloud base height/vertical visibility data 2: Cloud base height/vertical visibility, backscatter signal 6: Cloud base height/vertical visibility, cloud amount/height of cloud layer 7: Cloud base height/vertical visibility, backscatter signal, cloud amount/height of cloud layer
6	23	Spare character	a1	
7	25	Detection status	i1	0: Clear 1: One cloud base detected 2: Two cloud bases detected 3: Three cloud bases detected 4: Full obscuration determined but no cloud base detected 5: Some obscuration detected but determined to transparent
8	26	Warning and alarm information	a1	0: Self-check OK W: At least one warning active, no alarms A: At least one alarm active See No.12:observation information
9	28 - 32	Lowest cloud base height or vertical visibility	i5	In the case of detection status is 1,2 or 3: Lowest cloud base height In the case of detection status is 4: Calculation of vertical visibility In the case of detection status is 0 or 5: ///// Unit: See No.12:observation information
10	34 - 38	Second lowest cloud base height or highest signal detected	i5	In the case of detection status is 2 or 3: Second lowest cloud base height In the case of detection status is 4: Maximum height that a signal was detected In the case of detection status is 0,1 or 5: ///// Unit: See No.12:observation information
11	40 - 44	Highest cloud base height	i5	In the case of detection status is 3: Highest cloud base height In the case of detection status is 0,1,2,4,5: ///// Unit: See No.12:observation information
12	46 - 53	Observation information	a8	*1
13	55 - 56	Terminator	a2	CR+LF

*1: Observation information

The information is presented using 8 bytes characters. Each character, indicated in hexadecimal character, shows the following meanings;

Byte	Hexadecimal character (0:on, -:off)																Message(A:alarm, W:warning)
	0	1	2	3	4	5	6	7	8	9	A	B	C	D	E	F	
1	-	-	-	-	-	-	-	0	0	0	0	0	0	0	0	0	Laser temperature shut-off(A)
	-	-	-	0	0	0	0	-	-	-	0	0	0	0	0	0	Laser failure(A)
	-	0	0	-	0	0	0	-	0	0	-	0	0	-	0	0	Receiver failure(A)
	0	-	0	-	0	-	0	-	0	-	0	-	0	-	0	0	Voltage failure(A)
2	-	-	-	-	-	-	-	0	0	0	0	0	0	0	0	0	Spare(A)
	-	-	-	0	0	0	0	-	-	0	0	0	0	0	0	0	Spare(A)
	-	0	0	-	0	0	0	-	0	0	-	0	0	-	0	0	Spare(A)
	0	-	0	-	0	-	0	-	0	-	0	-	0	-	0	0	Spare(A)
3	-	-	-	-	-	-	-	0	0	0	0	0	0	0	0	0	Windows contaminated(W)
	-	-	-	0	0	0	0	-	-	-	0	0	0	0	0	0	Battery low(W)
	-	0	0	-	0	0	0	-	0	0	-	0	0	-	0	0	Laser power low(W)
	0	-	0	-	0	-	0	-	0	-	0	-	0	-	0	0	Laser temperature high or low(W)
4	-	-	-	-	-	-	-	0	0	0	0	0	0	0	0	0	Internal temperature high or low(W)
	-	-	-	0	0	0	0	-	-	-	0	0	0	0	0	0	Voltage high or low(W)
	-	0	0	-	0	0	0	-	0	0	-	0	0	-	0	0	Relative Humidity is > 85%(W)
	0	-	0	-	0	-	0	-	0	-	0	-	0	-	0	0	Receiver cross-talk compensation poor(W)
5	-	-	-	-	-	-	-	0	0	0	0	0	0	0	0	0	Blower suspect(W)
	-	-	-	0	0	0	0	-	-	0	0	0	0	0	0	0	Spare(W)
	-	0	0	-	0	0	0	-	0	0	-	0	0	-	0	0	Spare(W)
	0	-	0	-	0	-	0	-	0	-	0	-	0	-	0	0	Spare(W)
6	-	-	-	-	-	-	-	0	0	0	0	0	0	0	0	0	Blower is ON
	-	-	-	0	0	0	0	-	-	-	0	0	0	0	0	0	Blower heater is ON
	-	0	0	-	0	0	0	-	0	0	-	0	0	-	0	0	Internal heater is ON
	0	-	0	-	0	-	0	-	0	-	0	-	0	-	0	0	Units are METERS if ON , else FEET
7	-	-	-	-	-	-	-	0	0	0	0	0	0	0	0	0	Polling mode is ON
	-	-	-	0	0	0	0	-	-	0	0	0	0	0	0	0	Working from battery
	-	0	0	-	0	0	0	-	0	0	-	0	0	-	0	0	Single sequence mode is ON
	0	-	0	-	0	-	0	-	0	-	0	-	0	-	0	0	Manual settings are effective
8	-	-	-	-	-	-	-	0	0	0	0	0	0	0	0	0	Tilt angle is > 45 degrees
	-	-	-	0	0	0	0	-	-	-	0	0	0	0	0	0	High background radiance
	-	0	0	-	0	0	0	-	0	0	-	0	0	-	0	0	Manual blower control
	0	-	0	-	0	-	0	-	0	-	0	-	0	-	0	0	Spare

Related Information



MR13-02B Leg2
Ship Name: MIRAI
Period: 2013-05-17 - 2013-05-23
Chief Scientist: Mari Inada (JAMSTEC)
Proposal 2013 MIRAI Engineering Cruise
Title:

Update History

2014-08-12	An observation data was registerd.
2014-07-30	An observation data was registerd.

JAMSTEC

[Site Policy](#)
[Privacy Policy](#)
[Application for Data and Samples](#)
[Data Policy](#)

[What's New](#)
[Update History](#)
[Feeds](#)

Lists

[Publication List](#)
[Amount of Public Info.](#)

[Data](#)
[Map Search](#)
[Data Tree](#)
[Detailed Search](#)

Information of the Ships

[NATSUSHIMA](#)
[KAIYO](#)
[YOKOSUKA](#)
[MIRAI](#)
[KAIREI](#)
[CHIKYU](#)
[KAIMEI](#)
[SHINSEI MARU](#)
[HAKUHO MARU](#)

Information of the Submersibles

[KAIKO](#)
[SHINKAI 2000](#)
[SHINKAI 6500](#)
[DEEP TOW](#)
[HYPER-DOLPHIN](#)
[URASHIMA](#)
[YOKOSUKA DEEP TOW](#)
[6K Camera DEEP TOW](#)
[6K Sonar DEEP TOW](#)
[KM-ROV](#)
[POWER GRAB SAMPLER \(SHELL\)](#)
[POWER GRAB SAMPLER \(CLOW\)](#)
[BMS](#)

Go to a Cruise Information

Cruise ID:

Go to a Dive Information

Dive ID:

Copyright 2011 Japan Agency for Marine-Earth Science and Technology



JAMSTEC 国立研究開発法人
海洋研究開発機構
JAPAN AGENCY FOR MARINE-EARTH SCIENCE AND TECHNOLOGY

MIRAI MR13-02B Leg2 Cloud Ceiling

Last Modified: 2014-08-12

[ReadMe](#) [Observation Data](#) [Data Format](#)

Cruise ID: [MR13-02B Leg2](#)

Cloud Ceiling: Raw

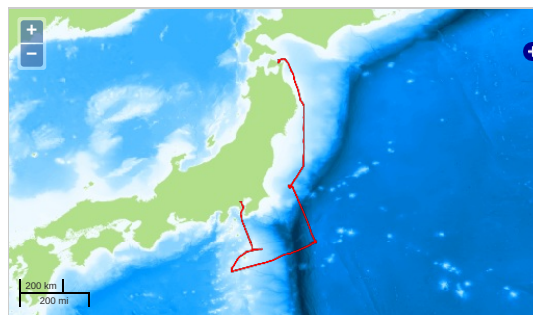
Data Policy: [JAMSTEC](#)

Observation Items: Cloud base height

Science Keywords:

ATMOSPHERE > CLOUDS > CLOUD
BASE

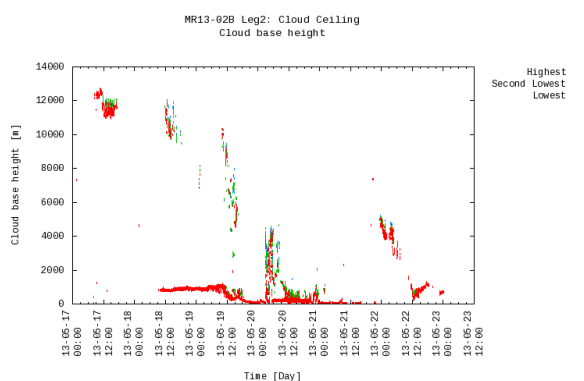
Observation Map



— ... Observation Line — ... Navigation ● ... Observation, Dive Point, Hole

Imagery reproduced from ...

Figures



Data List

[Add to Basket](#)

☐ File names

☐ A3051700.DAT

☐ A3051800.DAT

☐ A3051900.DAT

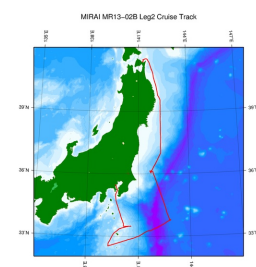
☐ A3052000.DAT

☐ A3052100.DAT

☐ A3052200.DAT

☐ A3052300.DAT

Related Information



MR13-02B Leg2

Ship Name: MIRAI

Period: 2013-05-17 - 2013-05-23

Chief Scientist: Mari Inada (JAMSTEC)

Proposal 2013 MIRAI Engineering Cruise

Title:

[Enlarge Image](#)

Update History

2014-08-12
2014-07-30

An observation data was registered.
An observation data was registered.

JAMSTEC
Site Policy
Privacy Policy
Application for Data and Samples
Data Policy

What's New
Update History
Feeds

Lists
Publication List
Amount of Public Info.

Data
Map Search
Data Tree
Detailed Search

Information of the Ships
NATSUSHIMA
KAIYO
YOKOSUKA
MIRAI
KAIREI
CHIKYU
KAIMEI
SHINSEI MARU
HAKUHO MARU

Information of the Submersibles
KAIKO
SHINKAI 2000
SHINKAI 6500
DEEP TOW
HYPER-DOLPHIN
URASHIMA
YOKOSUKA DEEP TOW
6K Camera DEEP TOW
6K Sonar DEEP TOW
KM-ROV
POWER GRAB
SAMPLER (SHELL)
POWER GRAB
SAMPLER (CLOW)
BMS

Go to a Cruise Information

Cruise ID:

Go to a Dive Information

Dive ID:

Copyright 2011 Japan Agency for Marine-Earth Science and Technology



JAMSTEC 国立研究開発法人
海洋研究開発機構
JAPAN AGENCY FOR MARINE-EARTH SCIENCE AND TECHNOLOGY