

KAIMEI KM17-03 Expendable Bathythermograph (XBT)

Last Modified: 2019-09-11

[ReadMe](#) [Observation Data](#) [Data Format](#)

Cruise ID: [KM17-03](#)

Expendable Bathythermograph (XBT): Processed (DMO)-QCed

Data Policy: [JAMSTEC](#)

Observation Items: Depth, Temperature

Science Keywords:

OCEANS > OCEAN TEMPERATURE > WATER TEMPERATURE

Cruise Report

http://www.godac.jamstec.go.jp/catalog/data/doc_catalog/media/KM17-03_all.pdf

For Using Data

Principal Investigator

Data Management Office

Use Constraints

See [Terms and Conditions](#) about constrain of use.

Data Citation

See [Terms and Conditions](#) about data citation.

Instrument

Instrument:

XBT/XCTD



Overview

Using XBT (eXpendable Bathy Thermograph) system, the vertical distribution of water temperature is observed during free fall of its probe part in the seawater. On board, the analogue signal is converted to the temperature by data processor and the data is stored in PC. Depth data is calculated from the elapsed time.

System

(1) Launcher

Hand launcher

Manufacturer : Sippican, Inc.

Operation area : Rear upper deck

Automatic launcher

Manufacturer : Tsurumi Seiki Co., LTD.

Location : A Deck port side of rear (7m from the sea level). The control panel is installed in the observatory.

(2) Converter

Manufacturer : Tsurumi Seiki Co., LTD.

Location : observatory

Sampling rate : 50 msec

(3) XBT probe specifications

| Probe Type | TSK T-5 | TSK T-6 | TSK T-7 | TSK T-10 |
|--------------------------------|---|---------|---------|----------|
| Temperature range [deg-C] | -2 to 35 | | | |
| Temperature accuracy [deg-C] | +/- 0.2 | | | |
| Temperature resolution [deg-C] | 0.01 | | | |
| Measurement depth [m] | 1830 | 460 | 760 | 300 |
| Depth accuracy [m] | 5 or +/- 2% of depth; whichever is larger | | | |
| Maximum elapsed time [sec] | 291 | 73 | 123 | 48 |
| Rated ship speed [knot] | 6 | 15 | 15 | 10 |

Since XBT carries no pressure sensor, we need to estimate depth from the elapsed time. The fall-rate equation is as follows.

$$Z = at + 10E^{-3} \cdot bt^2$$

Where Z(m) is the depth and t(sec) is the elapsed time.

In addition, coefficients of the fall-rate equation are different by probe types.

| Probe Type | TSK T-5 | TSK T-6 | TSK T-7 | TSK T-10 |
|---------------|---------|---------|---------|----------|
| Coefficient-a | 6.828 | 6.691 | 6.691 | 6.301 |
| Coefficient-b | -1.82 | -2.25 | -2.25 | -2.16 |

* Coefficients listed above are supplied by Sippican, Inc., in USA.

The list of an XBT type used in each cast is as follows.

The list of an XBT type used in each cast is as follows.

| Cast name | Probe Serial No. | Probe Type | Launcher | Converter |
|-----------------|------------------|------------|----------|-----------|
| BT-201704290455 | - | T-5 | Auto | MK-150N |
| BT-201704302050 | - | T-5 | Auto | MK-150N |

Data processing

(1) For sensor's stability, values of less than 1 m for temperature are replaced by missing values, respectively, based on manufacturer's recommendation.

(2) Quality control

QCed data were added flag according to the NODC (National Oceanographic Data Center) quality control procedure.

- 1) The gradient check of adjacent depth data
- 2) The broad range check set up at given ocean space and depth

Please see the site of NODC of the following link for quality control procedure in detail.

[QUALITY CONTROL AND PROCESSING OF HISTORICAL OCEANOGRAPHIC TEMPERATURE, SALINITY, AND OXYGEN DATA](#)

In addition, an abnormal value is identified by a visual check, and the data after visual QC is released.

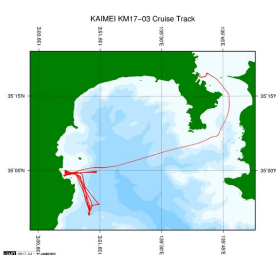
Note

(1) It is reported that T-5 probes produced by Tsurumi Seiki Co. Ltd. (TSK T-5 probes) have a fall-rate bias. Please see the following about publication policy of XBT fall-rate bias correction data.

[Publication policy of XBT fall-rate bias correction data](#)

Related Information

☒ Cruise Data ☐ Dive Data



[Enlarge Image](#)

KM17-03

Ship Name: KAIMEI
Period: 2017-04-29 - 2017-05-04
Chief Scientist: Fujio Yamamoto (JAMSTEC)

Update History

| | |
|------------|-------------------------------------|
| 2019-09-11 | An observation data was registered. |
| 2019-05-31 | An observation data was registered. |

JAMSTEC

Site Policy

Privacy Policy

Application for Data and Samples

Data Policy

What's New

Update History

Feeds

Lists

Publication List

Amount of Public Info.

Data

Map Search

Data Tree

Detailed Search

Information of the Ships

NATSUSHIMA

KAIYO

YOKOSUKA

MIRAI

KAIREI

CHIKYU

KAIMEI

SHINSEI MARU

HAKUHO MARU

Information of the Submersibles

KAIKO

SHINKAI 2000

SHINKAI 6500

DEEP TOW

HYPER-DOLPHIN

URASHIMA

YOKOSUKA DEEP TOW

6K Camera DEEP TOW

6K Sonar DEEP TOW

KM-ROV

POWER GRAB SAMPLER (SHELL)

POWER GRAB SAMPLER (CLOW)

BMS

Go to a Cruise Information

Cruise ID:

Go to a Dive Information

Dive ID:

Copyright 2011 Japan Agency for Marine-Earth Science and Technology

JAMSTEC
JAPAN AGENCY FOR MARINE-EARTH SCIENCE AND TECHNOLOGY

国立研究開発法人
海洋研究開発機構

KAIMEI KM17-03 Expendable Bathythermograph (XBT)

Last Modified: 2019-09-11

[ReadMe](#) [Observation Data](#) [Data Format](#)

Cruise ID: [KM17-03](#)

Expendable Bathythermograph (XBT): Processed (DMO)-QCed

Data Policy: [JAMSTEC](#)

XBT DMO

Each data file contains one line header (meta data) followed by data lines for each cast.

The number of data lines are recorded in the header.

Header part

| No. | Column | Content | Format | Remarks |
|-----|---------|----------------------|---------------|----------------|
| 1 | 1 | Header ID | a1 | fixed as '#' |
| 2 | 3 - 6 | Data ID | a4 | XBT |
| 3 | 8 - 22 | Cruise ID | a15 | |
| 4 | 33 - 40 | Date | i8 | YYYYMMDD (UTC) |
| 5 | 42 - 45 | Time | i4 | hhmm (UTC) |
| 6 | 47 - 55 | Latitude | i2,a1,f5.2,a1 | dd-mm.mmN(S) |
| 7 | 57 - 66 | Longitude | i3,a1,f5.2,a1 | ddd-mm.mmE(W) |
| 8 | 68 - 71 | Number of data lines | i4 | |
| 9 | 72 - 73 | Terminator | - | CR+LF |

Data part

| No. | Column | Content | Unit | Format | Remarks |
|-----|---------|-------------|-------|--------|---|
| 1 | 1 - 11 | Depth | m | f11.1 | |
| 2 | 12 - 22 | Temperature | deg-C | f11.2 | ITS-90 |
| 3 | 45 - 55 | Flag | - | i11 | 1 - 7 : space 8 : flag of depth 9 : flag of temperature 10 - 11 : space * reference : Definition of Quality Control Flags |
| 4 | 56 - 57 | Terminator | - | - | CR+LF |

Each contents of the data part is stored in 11 bytes.

Missing value is presented by '-5', and error value is presented by '-9'.

Definition of Quality Control Flags

1. Depth Flags

- 0 - accepted value
- 1 - error in recorded depth (same or less than previous depth)
- 2 - density inversion

2. Observed Level Flags

- N - missing value
- 0 - accepted value
- 1 - range outlier (outside of broad range check)
- 2 - failed inversion check
- 3 - failed gradient check
- 4 - zero anomaly
- 5 - failed combined gradient and inversion checks
- 6 - failed range and inversion checks
- 7 - failed range and gradient checks
- 8 - failed range and zero anomaly checks
- 9 - failed range and combined gradient and inversion checks
- A - failed visual check

* Range and gradient check is performed to XBT data.

QCed data were added flag according to the NODC (National Oceanographic Data Center) quality control procedure, additionally visually checked. Please see the site of NODC of the following link for quality control procedure.

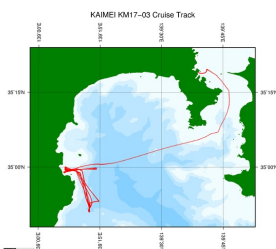
[QUALITY CONTROL AND PROCESSING OF HISTORICAL OCEANOGRAPHIC TEMPERATURE, SALINITY, AND OXYGEN DATA](#)

Sample Program

[ex_read2.f](#)

Related Information

☒ Cruise Data ☐ Dive Data



KM17-03

Ship Name: KAIMEI
Period: 2017-04-29 - 2017-05-04
Chief Scientist: Fujio Yamamoto (JAMSTEC)

 [Enlarge Image](#)

Update History

| | |
|------------|------------------------------------|
| 2019-09-11 | An observation data was registerd. |
| 2019-05-31 | An observation data was registerd. |

JAMSTEC
Site Policy
Privacy Policy
Application for Data and Samples
Data Policy

What's New
Update History
Feeds

Lists
Publication List
Amount of Public Info.

Data
Map Search
Data Tree
Detailed Search

Information of the Ships
NATSUSHIMA
KAIYO
YOKOSUKA
MIRAI
KAIREI
CHIKYU
KAIMEI
SHINSEI MARU
HAKUHO MARU

Information of the Submersibles
KAIKO
SHINKAI 2000
SHINKAI 6500
DEEP TOW
HYPER-DOLPHIN
URASHIMA
YOKOSUKA DEEP TOW
6K Camera DEEP TOW
6K Sonar DEEP TOW
KM-ROV
POWER GRAB SAMPLER (SHELL)
POWER GRAB SAMPLER (CLOW)
BMS

Go to a Cruise Information

Cruise ID:

Go to a Dive Information

Dive ID:

Copyright 2011 Japan Agency for Marine-Earth Science and Technology



JAMSTEC 国立研究開発法人
海洋研究開発機構
JAPAN AGENCY FOR MARINE EARTH SCIENCE AND TECHNOLOGY

KAIMEI KM17-03 Expendable Bathythermograph (XBT)

Last Modified: 2019-09-11

[ReadMe](#) [Observation Data](#) [Data Format](#)

Cruise ID: **KM17-03**

Expendable Bathythermograph (XBT): Processed (DMO)-QCed

Data Policy: **JAMSTEC**

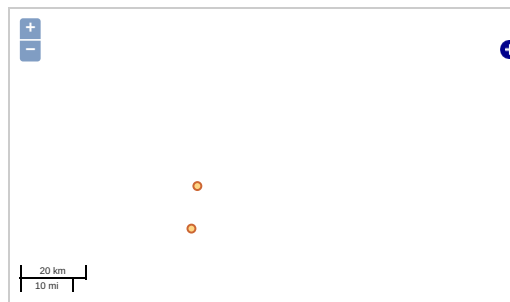
Observation Items: Depth, Temperature

Science Keywords:

OCEANS > OCEAN TEMPERATURE > WATER TEMPERATURE

Observation Map

1. Clicking the icon displays a balloon with observation information.
2. Then click the observation name, figures will be displayed.

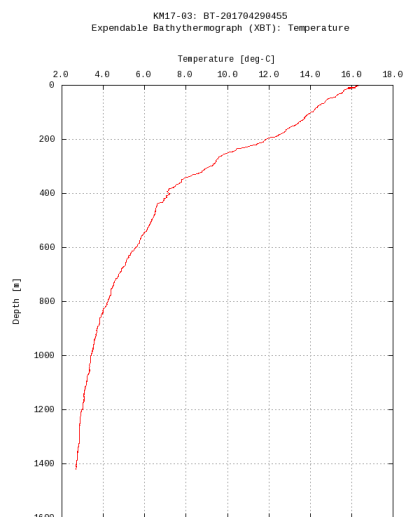


— ... Observation Line — ... Navigation ● ... Observation, Dive Point, Hole

Imagery reproduced from ...

Figures

BT-201704290455



Only values evaluated as "good" : all flags are 0" are plotted in profiles.
Please see Format Page for the definition of quality flags.

Data List

[Add to Basket](#)

- ☐ File names
- ☐ BT-201704290455.dat
- ☐ BT-201704302050.dat
- ☐ ex_read2.f (Sample Program)

- Observation List
The list of observation is shown as follows.

| Observation | Time and Date | Lat. [°] | Lon. [°] |
|-----------------|------------------|----------|----------|
| BT-201704290455 | 2017-04-29 04:56 | 35.0100 | 139.2570 |
| BT-201704302050 | 2017-04-30 20:57 | 34.8920 | 139.2406 |

Related Information

[Cruise Data](#) [Dive Data](#)



KAIMEI KM17-03 Cruise Track

Enlarge Image

KM17-03

Ship Name: KAIMEI

Period: 2017-04-29 - 2017-05-04

Chief Scientist: Fujio Yamamoto (JAMSTEC)

| Update History | |
|----------------|-------------------------------------|
| 2019-09-11 | An observation data was registered. |
| 2019-05-31 | An observation data was registered. |

JAMSTEC

Site Policy

Privacy Policy

Application for Data and Samples

Data Policy

What's New

Update History

Feeds

Lists

Publication List

Amount of Public Info.

Data

Map Search

Data Tree

Detailed Search

Information of the Ships

NATSUSHIMA

KAIYO

YOKOSUKA

MIRAI

KAIREI

CHIKYU

KAIMEI

SHINSEI MARU

HAKUHO MARU

Information of the Submersibles

KAIKO

SHINKAI 2000

SHINKAI 6500

DEEP TOW

HYPER-DOLPHIN

URASHIMA

YOKOSUKA DEEP TOW

6K Camera DEEP TOW

6K Sonar DEEP TOW

KM-ROV

POWER GRAB SAMPLER (SHELL)

POWER GRAB SAMPLER (CLOW)

BMS


Go to a Cruise Information

Cruise ID:

Go to a Dive Information

Dive ID:

Copyright 2011 Japan Agency for Marine-Earth Science and Technology



JAMSTEC 国立研究開発法人
海洋研究開発機構
JAPAN AGENCY FOR MARINE-EARTH SCIENCE AND TECHNOLOGY