

MIRAI MR12-E02 Leg2 Conductivity-Temperature-Depth Profiler (CTD)

Last Modified: 2014-10-31

[ReadMe](#) [Observation Data](#) [Data Format](#)

Cruise ID: [MR12-E02 Leg2](#)

Conductivity-Temperature-Depth Profiler (CTD): Processed (PI)

Data Policy: [JAMSTEC](#)

Observation Items: Pressure, Temperature, Salinity, Dissolved oxygen

Science Keywords:

OCEANS > OCEAN CHEMISTRY > OXYGEN
OCEANS > OCEAN TEMPERATURE > WATER TEMPERATURE
OCEANS > SALINITY/DENSITY > SALINITY
OCEANS > OCEAN OPTICS > PHOTOSYNTHETICALLY ACTIVE RADIATION
OCEANS > OCEAN OPTICS > FLUORESCENCE

Cruise Report

http://www.godac.jamstec.go.jp/catalog/data/doc_catalog/media/MR12-E02_leg2_all.pdf

For Using Data

Principal Investigator

Masahide Wakita (JAMSTEC)

Use Constraints

See [Terms and Conditions](#) about constrain of use.

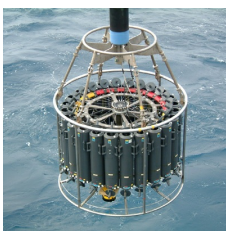
Data Citation

See [Terms and Conditions](#) about data citation.

Instrument

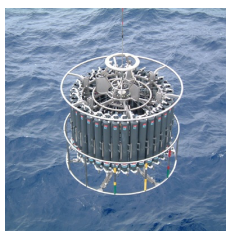
Instrument:

Water sampling system with CTD (30
litters * 24 bottles)



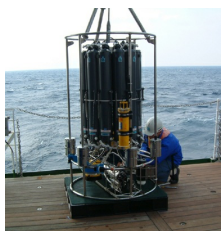
Instrument:

Water sampling system with CTD (12
litters * 36 bottles)



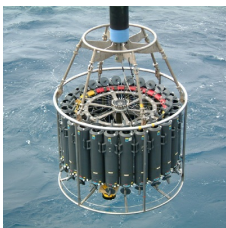
Instrument:

Water sampling system with CTD (12
litters * 12 bottles)



Instrument:

Conductivity temperature depth
measurements (CTD)



Overview

CTD(Conductivity-Temperature-Depth profiler) is used to observe the vertical profiles of temperature and conductivity.

Usually, this system is operated with multicylinder water sampler.

Observed signal is transmitted from sensor to the operation room on board using wire cable, and electric power is supplied from vessel to sensor.

Details of sensors attached to CTD system for MR12-E02 Leg2 cruise are presented in "System".

The following software, developed and supplied by the Sea-Bird Electronics, Inc., was used in MR09-03 Leg1.

SEASAVE(ver 7.21d) for data acquisition

SEASOFT(ver 7.18d) for data processing

Data presented on this website is averaged over 1db.

System

- Pressure : SBE9plus (Sea-Bird Electronics,Inc)
- Temperature : SBE3 (Sea-Bird Electronics,Inc)
- Salinity : SBE4 (Sea-Bird Electronics,Inc)
- Dissolved oxygen: SBE4 (Sea-Bird Electronics,Inc) , RINKOIII(JFE Advantec)
- Fluorescence:Seapoint Sensors,Inc.
- PAR: Satlantic Inc.
- XMISS [%] : WET Labs,Inc.

Calibration Information

Cruise report 3-2-2-1. CTD cast and water sampling

[Please see here for the cruise report.](#)

Notice

When use a data sample and result, please inform parson about the data of a title, author, publication year, title, form of the publication and the medium of the publication.

Contact parson about the data: Masahide Wakita

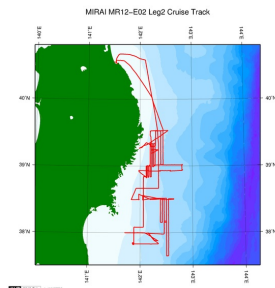
Organization: JAMSTEC Mutsu Institute for Oceanography

TEL: 81-175-45-1012

E-mail: mwakita@jamstec.go.jp

Related Information

 Cruise Data  Dive Data



[Enlarge Image](#)

MR12-E02 Leg2

Ship Name: MIRAI

Period: 2012-03-15 - 2012-03-21

Chief Scientist: Katsunori Fujikura (JAMSTEC)

Project Name: [Tohoku Ecosystem-Associated Marine Sciences (TEAMS)]

Proposal Marine Ecosystems Investigation, Impact by the mega-earthquake (the 2011 Earthquake of the Pacific coast of Tohoku) and Tsunami: For Recovery and Rebuilding of Sanriku Fisheries Activities

Update History

2014-10-31	An observation data was registerd.
------------	------------------------------------

JAMSTEC

[Site Policy](#)
[Privacy Policy](#)
[Application for Data and Samples](#)
[Data Policy](#)

[What's New](#)
[Update History](#)
[Feeds](#)

Lists

[Publication List](#)
[Amount of Public Info.](#)

Data

[Map Search](#)
[Data Tree](#)
[Detailed Search](#)

Information of the Ships

NATSUSHIMA
KAIYO
YOKOSUKA
MIRAI
KAIREI
CHIKYU
KAIMEI
SHINSEI MARU
HAKUHO MARU

Information of the Submersibles

KAIKO
SHINKAI 2000
SHINKAI 6500
DEEP TOW
HYPER-DOLPHIN
URASHIMA
YOKOSUKA DEEP TOW
6K Camera DEEP TOW
6K Sonar DEEP TOW
KM-ROV
POWER GRAB SAMPLER (SHELL)
POWER GRAB SAMPLER (CLOW)
BMS

Go to a Cruise Information

Cruise ID:

Go to a Dive Information

Dive ID:

Copyright 2011 Japan Agency for Marine-Earth Science and Technology



JAMSTEC
JAPAN AGENCY FOR MARINE-EARTH SCIENCE AND TECHNOLOGY

国立研究開発法人
海洋研究開発機構

MIRAI MR12-E02 Leg2 Conductivity-Temperature-Depth Profiler (CTD)

Last Modified: 2014-10-31

[ReadMe](#) [Observation Data](#) [Data Format](#)

Cruise ID: [MR12-E02 Leg2](#)

Conductivity-Temperature-Depth Profiler (CTD): Processed (PI)

Data Policy: [JAMSTEC](#)

About data format

We provide the dataset as AWI Ocean Data View format (generic spreadsheet format).

Ocean Data View : <http://odv.awi.de/>

Japanese Guide : http://www.jodc.go.jp/jodc_pub/digitalpub_j.html

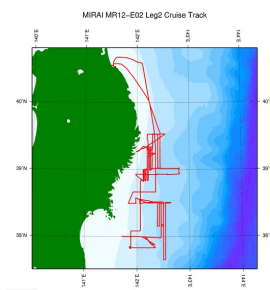
Quality flag

0 - accepted value

1 - unknown

Related Information

☒ Cruise Data ☐ Dive Data



[Enlarge Image](#)

MR12-E02 Leg2

Ship Name: MIRAI

Period: 2012-03-15 - 2012-03-21

Chief Scientist: Katsunori Fujikura (JAMSTEC)

Project Name: [Tohoku Ecosystem-Associated Marine Sciences (TEAMS)]

Proposal Title: Marine Ecosystems Investigation, Impact by the mega-earthquake (the 2011 Earthquake of the Pacific coast of Tohoku) and Tsunami: For Recovery and Rebuilding of Sanriku Fisheries Activities

Update History

2014-10-31 An observation data was registered.

JAMSTEC

[Site Policy](#)

[Privacy Policy](#)

[Application for Data and Samples](#)

[Data Policy](#)

[What's New](#)

[Update History](#)

[Feeds](#)

Lists

[Publication List](#)

[Amount of Public Info.](#)

[Data](#)

[Map Search](#)

[Data Tree](#)

[Detailed Search](#)

Information of the Ships

[NATSUSHIMA](#)

[KAIYO](#)

[YOKOSUKA](#)

[MIRAI](#)

[KAIREI](#)

[CHIKYU](#)

[KAIMEI](#)

[SHINSEI MARU](#)

[HAKUHO MARU](#)

Information of the Submersibles

[KAIKO](#)

[SHINKAI 2000](#)

[SHINKAI 6500](#)

[DEEP TOW](#)

[HYPER-DOLPHIN](#)

[URASHIMA](#)

[YOKOSUKA DEEP TOW](#)

[6K Camera DEEP TOW](#)

[6K Sonar DEEP TOW](#)

[KM-ROV](#)

[POWER GRAB SAMPLER](#)

[\(SHELL\)](#)

[POWER GRAB SAMPLER](#)

[\(CLOW\)](#)

[BMS](#)

Go to a Cruise Information

Cruise ID:

Go to a Dive Information

Dive ID:

MIRAI MR12-E02 Leg2 Conductivity-Temperature-Depth Profiler (CTD)

Last Modified: 2014-10-31

[ReadMe](#) [Observation Data](#) [Data Format](#)

Cruise ID: [MR12-E02 Leg2](#)

Conductivity-Temperature-Depth Profiler (CTD): Processed (PI)

Data Policy: [JAMSTEC](#)

Observation Items: Pressure, Temperature, Salinity, Dissolved oxygen

Science Keywords:

OCEANS > OCEAN CHEMISTRY > OXYGEN
OCEANS > OCEAN TEMPERATURE > WATER TEMPERATURE
OCEANS > SALINITY/DENSITY > SALINITY
OCEANS > OCEAN OPTICS > PHOTOSYNTHETICALLY ACTIVE RADIATION
OCEANS > OCEAN OPTICS > FLUORESCENCE

Observation Map

1. Clicking the icon displays a balloon with observation information.



— ... Observation Line — ... Navigation ● ... Observation, Dive Point, Hole

Imagery reproduced from ...

Data List

[Add to Basket](#)

File names

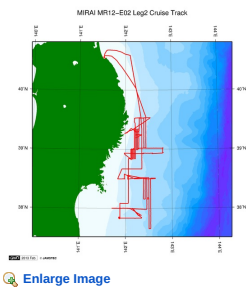
☐ MR12-E02_Leg2_CTD.o4x

● Observation List
The list of observation is shown as follows.

Observation	Time and Date	Lat. [°]	Lon. [°]
B02	2012-03-20 00:00	39.5210	142.1970
B03	2012-03-20 00:00	39.5300	142.3150
B04	2012-03-21 00:00	39.5330	142.5340
B05	2012-03-24 00:00	39.5350	142.7450
B06	2012-03-24 00:00	39.5350	142.9650
B07	2012-03-24 00:00	39.5350	143.1830
C03	2012-03-19 00:00	38.9330	141.9760
C04	2012-03-19 00:00	38.9300	142.1670
C05	2012-03-19 00:00	38.9310	142.3830
C06	2012-03-19 00:00	38.9300	142.5800
C07	2012-03-19 00:00	38.9390	142.8070
D03	2012-03-15 00:00	38.5000	141.8320
D04	2012-03-15 00:00	38.4990	141.9830
D05	2012-03-16 00:00	38.5000	142.1990
D06	2012-03-17 00:00	38.5000	142.4180
D07	2012-03-17 00:00	38.5030	142.6370
D08	2012-03-26 00:00	38.5010	142.8480
D45	2012-03-25 00:00	38.4990	142.0950
D55	2012-03-26 00:00	38.5010	142.3380
E05	2012-03-17 00:00	38.0010	141.7130
E06	2012-03-18 00:00	38.0010	141.9340
E07	2012-03-18 00:00	37.9990	142.1530
F01	2012-03-28 00:00	37.8810	141.6720
F02	2012-03-28 00:00	37.8810	141.7350
F03	2012-03-27 00:00	37.8800	141.9550
F04	2012-03-27 00:00	37.8820	142.2930
F05	2012-03-27 00:00	37.8800	142.5110
F06	2012-03-27 00:00	37.8810	142.7260
O01	2012-03-23 00:00	39.2450	142.2230
O02	2012-03-24 00:00	39.2420	142.3210

Related Information

[Cruise Data](#) [Dive Data](#)



[Enlarge Image](#)

MR12-E02 Leg2

Ship Name: MIRAI

Period: 2012-03-15 - 2012-03-21

Chief Scientist: Katsunori Fujikura (JAMSTEC)

Project Name: [Tohoku Ecosystem-Associated Marine Sciences (TEAMS)]

Proposal Marine Ecosystems Investigation, Impact by the mega-earthquake (the 2011 Earthquake of the Pacific coast of Tohoku) and Tsunami: For Recovery and Rebuilding of Sanriku Fisheries Activities

Update History

2014-10-31

An observation data was registered.

JAMSTEC

[Site Policy](#)

[Privacy Policy](#)

[Application for Data and Samples](#)

[Data Policy](#)

[What's New](#)

[Update History](#)

[Feeds](#)

Lists

[Publication List](#)

[Amount of Public Info.](#)

[Data](#)

[Map Search](#)

[Data Tree](#)

[Detailed Search](#)

Information of the Ships

[NATSUSHIMA](#)

[KAIYO](#)

[YOKOSUKA](#)

[MIRAI](#)

[KAIREI](#)

[CHIKYU](#)

[KAIMEI](#)

[SHINSEI MARU](#)

[HAKUHO MARU](#)

Information of the Submersibles

[KAICO](#)

[SHINKAI 2000](#)

[SHINKAI 6500](#)

[DEEP TOW](#)

[HYPER-DOLPHIN](#)

[URASHIMA](#)

[YOKOSUKA DEEP TOW](#)

[6K Camera DEEP TOW](#)

[6K Sonar DEEP TOW](#)

[KM-ROV](#)

[POWER GRAB SAMPLER \(SHELL\)](#)

[POWER GRAB SAMPLER \(CLOW\)](#)

[BMS](#)

Go to a Cruise Information

Cruise ID:

Go

Go to a Dive Information

Dive ID:

Go

Copyright 2011 Japan Agency for Marine-Earth Science and Technology



JAMSTEC
JAPAN AGENCY FOR MARINE-EARTH SCIENCE AND TECHNOLOGY

国立研究開発法人
海洋研究開発機構