

## MIRAI MR13-04 Zooplankton biomass data

Last Modified: 2015-09-30

[ReadMe](#) [Observation Data](#)

Cruise ID: [MR13-04](#)

Zooplankton biomass data: Processed (PI)

Data Policy: [JAMSTEC](#)

Observation Items:

Science Keywords:

### Data Information

Bulk biomass of zooplankton (dry mass) collected using multiple opening/closing plankton net system (IONESS) at two time-series stations, F1, K2 and S1.

### Cruise Report

[http://www.godac.jamstec.go.jp/catalog/data/doc\\_catalog/media/MR13-04\\_all.pdf](http://www.godac.jamstec.go.jp/catalog/data/doc_catalog/media/MR13-04_all.pdf)

### For Using Data

#### Principal Investigator

Minoru Kitamura (JAMSTEC)

#### Use Constraints

See [Terms and Conditions](#) about constrain of use.

#### Data Citation

See [Terms and Conditions](#) about data citation.

### Instrument

Instrument:

Zooplankton samplings : IONESS

Instrument Information:

Multiple opening/closing plankton net.

See following URL;

system[http://www.seanet.co.jp/html/product/product01\\_03/product03\\_01.html](http://www.seanet.co.jp/html/product/product01_03/product03_01.html)



### Sample

Zoolankton

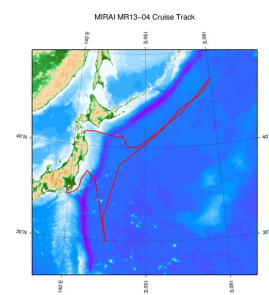
### Sample ID

MR13-04B-F1-1, MR13-04B-S1-3, MR13-04B-K2-5

### Data Format

Excel file

## Related Information



[Enlarge Image](#)

### MR13-04

Ship Name: MIRAI

Period: 2013-07-09 - 2013-07-29

Chief Scientist: Makio Honda (JAMSTEC)

Project Name: [Station K2, Station S1, Station KEO, Station KNOT]

Proposal ▶ Change in material cycles and ecosystem by the climate change and its feedback Title:

## Update History

2015-09-30 An observation data was registered.

### JAMSTEC

[Site Policy](#)

[Privacy Policy](#)

[Application for Data and Samples](#)

[Data Policy](#)

### What's New

[Update History](#)

[Feeds](#)

### Lists

[Publication List](#)

[Amount of Public Info.](#)

### Data

[Map Search](#)

[Data Tree](#)

[Detailed Search](#)

### Information of the Ships

[NATSUSHIMA](#)

[KAIYO](#)

[YOKOSUKA](#)

[MIRAI](#)

[KAIREI](#)

[CHIKYU](#)

[KAIMEI](#)

[SHINSEI MARU](#)

[HAKUHO MARU](#)

### Information of the Submersibles

[KAIKO](#)

[SHINKAI 2000](#)

[SHINKAI 6500](#)

[DEEP TOW](#)

[HYPER-DOLPHIN](#)

[URASHIMA](#)

[YOKOSUKA DEEP TOW](#)

[6K Camera DEEP TOW](#)

[6K Sonar DEEP TOW](#)

[KM-ROV](#)

### Go to a Cruise Information

Cruise ID:

### Go to a Dive Information

Dive ID:

POWER GRAB SAMPLER  
(SHELL)  
POWER GRAB SAMPLER  
(CLOW)  
BMS

Copyright 2011 Japan Agency for Marine-Earth Science and  
Technology



**JAMSTEC** 国立研究開発法人  
海洋研究開発機構  
JAPAN AGENCY FOR MARINE-EARTH SCIENCE AND TECHNOLOGY

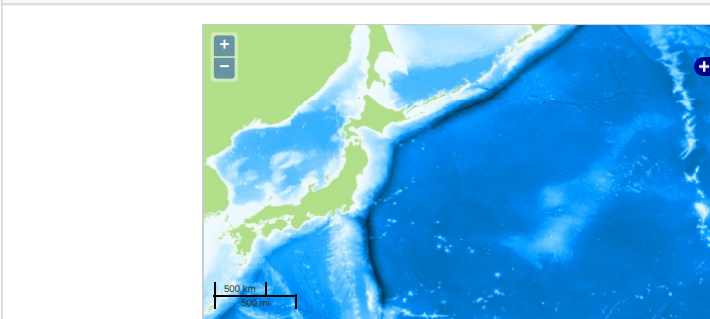
## MIRAI MR13-04 Zooplankton biomass data

Last Modified: 2015-09-30

[ReadMe](#) [Observation Data](#)

Cruise ID: **MR13-04**  
Zooplankton biomass data Processed (PI)  
Data Policy: [JAMSTEC](#)  
Observation Items:  
Science Keywords:

### Observation Map



Imagery reproduced from ...

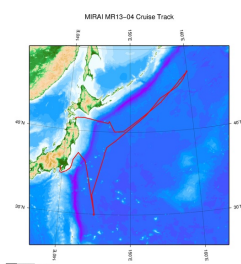
... Observation Line ... Navigation ... Observation, Dive Point, Hole

### Data List

#### File names

☐ zooplankton.xlsx

### Related Information



[Enlarge Image](#)

#### MR13-04

Ship Name: MIRAI  
Period: 2013-07-09 - 2013-07-29  
Chief Scientist: Makio Honda (JAMSTEC)  
Project Name: [Station K2, Station S1, Station KEO, Station KNOT]  
Proposal: ▶ Change in material cycles and ecosystem by the climate change and its feedback  
Title:

### Update History

2015-09-30 An observation data was registered.

#### JAMSTEC

[Site Policy](#)  
[Privacy Policy](#)  
[Application for Data and Samples](#)  
[Data Policy](#)  
  
[What's New](#)  
[Update History](#)  
[Feeds](#)

[Lists](#)  
[Publication List](#)  
[Amount of Public Info.](#)  
  
[Data](#)  
[Map Search](#)  
[Data Tree](#)  
[Detailed Search](#)

#### Information of the Ships

[NATSUSHIMA](#)  
[KAIYO](#)  
[YOKOSUKA](#)  
[MIRAI](#)  
[KAIREI](#)  
[CHIKYU](#)  
[KAIMEI](#)  
[SHINSEI MARU](#)  
[HAKUHO MARU](#)

#### Information of the Submersibles

[KAIKO](#)  
[SHINKAI 2000](#)  
[SHINKAI 6500](#)  
[DEEP TOW](#)  
[HYPER-DOLPHIN](#)  
[URASHIMA](#)  
[YOKOSUKA DEEP TOW](#)  
[6K Camera DEEP TOW](#)  
[6K Sonar DEEP TOW](#)  
[KM-ROV](#)  
[POWER GRAB SAMPLER \(SHELL\)](#)  
[POWER GRAB SAMPLER \(CLOW\)](#)  
[BMS](#)

#### Go to a Cruise Information

Cruise ID:

#### Go to a Dive Information

Dive ID:

