

## MIRAI MR05-05 Leg3 Conductivity-Temperature-Depth Profiler (CTD)

Last Modified: 2017-04-11

[ReadMe](#) [Observation Data](#) [Data Format](#)

Cruise ID: [MR05-05 Leg3](#)

Conductivity-Temperature-Depth Profiler (CTD): Processed (PI)

Data Policy: [JAMSTEC](#)

Observation Items: Pressure, Temperature, Salinity, Dissolved oxygen

Science Keywords:

OCEANS > OCEAN CHEMISTRY > OXYGEN  
OCEANS > OCEAN TEMPERATURE > WATER TEMPERATURE  
OCEANS > SALINITY/DENSITY > SALINITY

Cruise Report

[http://www.godac.jamstec.go.jp/catalog/data/doc\\_catalog/media/MR05-05\\_leg1-3\\_all.pdf](http://www.godac.jamstec.go.jp/catalog/data/doc_catalog/media/MR05-05_leg1-3_all.pdf)

### [For Using Data](#)

Principal Investigator

Hiroshi Uchida (JAMSTEC)

Use Constraints

See [Terms and Conditions](#) about constrain of use.

Data Citation

See [Terms and Conditions](#) about data citation.

### Instrument

Instrument:

Water sampling system with CTD (30  
litters \* 24 bottles)



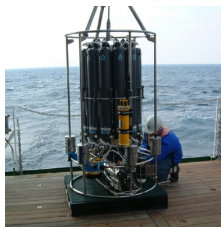
Instrument:

Water sampling system with CTD (12  
litters \* 36 bottles)



Instrument:

Water sampling system with CTD (12  
litters \* 12 bottles)



Instrument:

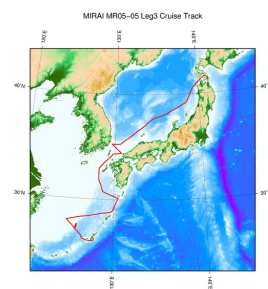
Conductivity temperature depth  
measurements (CTD)



### Overview

Please see the [Data book](#) for details of data.

### Related Information



[Enlarge Image](#)

#### MR05-05 Leg3

Ship Name: MIRAI

Period: 2006-01-19 - 2006-01-30

Chief Scientist: Shuichi Watanabe (JAMSTEC)

Project Name: [POST-WOCE Hydrography]

### Update History

2017-04-11	An observation data was registered.
2014-07-26	An observation data was registered.
2012-11-25	An observation data was registered.

[Site Policy](#)  
[Privacy Policy](#)  
[Application for Data and Samples](#)  
[Data Policy](#)  
**What's New**  
[Update History](#)  
[Feeds](#)

[Publication List](#)  
[Amount of Public Info.](#)  
**Data**  
[Map Search](#)  
[Data Tree](#)  
[Detailed Search](#)

[NATSUSHIMA](#)  
[KAIYO](#)  
[YOKOSUKA](#)  
[MIRAI](#)  
[KAIREI](#)  
[CHIKYU](#)  
[KAIMEI](#)  
[SHINSEI MARU](#)  
[HAKUHO MARU](#)

**Submersibles**  
[KAIKO](#)  
[SHINKAI 2000](#)  
[SHINKAI 6500](#)  
[DEEP TOW](#)  
[HYPER-DOLPHIN](#)  
[URASHIMA](#)  
[YOKOSUKA DEEP TOW](#)  
[6K Camera DEEP TOW](#)  
[6K Sonar DEEP TOW](#)  
[KM-ROV](#)  
[POWER GRAB SAMPLER \(SHELL\)](#)  
[POWER GRAB SAMPLER \(CLOW\)](#)  
[BMS](#)

Cruise ID:

Go to a Dive Information

Dive ID:

Copyright 2011 Japan Agency for Marine-Earth Science and Technology



**JAMSTEC** 国立研究開発法人  
海洋研究開発機構  
JAPAN AGENCY FOR MARINE-EARTH SCIENCE AND TECHNOLOGY

## MIRAI MR05-05 Leg3 Conductivity-Temperature-Depth Profiler (CTD)

Last Modified: 2017-04-11

[ReadMe](#) [Observation Data](#) [Data Format](#)

Cruise ID: [MR05-05 Leg3](#)

Conductivity-Temperature-Depth Profiler (CTD): Processed (PI)

Data Policy: [JAMSTEC](#)

### CTD WOCE-type1

#### Format Description for the Processed (PI) Data

Provided in the Exchange Format of CCHDO (CLIVAR and Carbon Hydrographic Data Office). Please see the following link for details of Exchange Format.

[CCHDO | CLIVAR & Carbon Hydrographic Data Office](#)

Data in following cruise is not expressed with Exchange Format. Please see the site of each cruise for format.

MR02-K05 Leg1

MR04-05

#### Format Description for the QCed Data

Each data file contains one line header (meta data) followed by data lines for each cast.

The number of data lines are recorded in the header.

Header part

No.	Column	Content	Format	Remarks
1	1	Header ID	a1	fixed as '#'
2	3 - 6	Data ID	a4	CTD
3	8 - 22	Cruise ID	a15	MYYY-(K)XX(_legx)
4	24 - 31	Cast name	a8	
5	33 - 40	Date	i8	YYYYMMDD (UTC)
6	42 - 45	Time	i4	hhmm (UTC)
7	47 - 55	Latitude	i2,a1,f5.2,a1	dd-mm.mmN(S)
8	57 - 66	Longitude	i3,a1,f5.2,a1	ddd-mm.mmE(W)
9	68 - 71	Number of data lines	i4	
10	72 - 73	Terminator	-	CR+LF

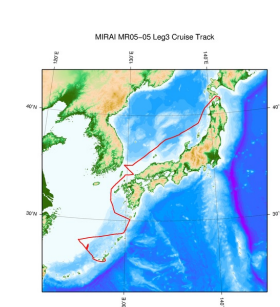
Data part

No.	Column	Content	Unit	Format	Remarks
1	1 - 11	Pressure	dbar	f11.3	
2	12 - 22	Temperature	deg-C	f11.4	ITS-90
3	23 - 33	Salinity	PSU	f11.4	PSS-78
4	34 - 44	Dissolved oxygen	umol/kg	f11.3	
5	45 - 55	Flag	-	i11	1 - 7 : space 8 : flag of pressure 9 : flag of temperature 10 : flag of salinity 11 : flag of dissolved oxygen * reference : <a href="#">Definition of Quality Control Flags</a>
6	56 - 57	Terminator	-	-	CR+LF

Each contents of the data part is stored in 11 bytes.

Missing value is presented by '-5', and error value is presented by '-9'.

### Related Information



[Enlarge Image](#)

#### MR05-05 Leg3

Ship Name: MIRAI

Period: 2006-01-19 - 2006-01-30

Chief Scientist: Shuichi Watanabe (JAMSTEC)

Project Name: [POST-WOCE Hydrography]

### Update History

2017-04-11	An observation data was registerd.
2014-07-26	An observation data was registerd.
2012-11-25	An observation data was registerd.

Optical history  
Feeds

SHINSEI MARU  
HAKUHO MARU

YOKOSUKA DEEP TOW  
6K Camera DEEP TOW  
6K Sonar DEEP TOW  
KM-ROV  
POWER GRAB SAMPLER  
(SHELL)  
POWER GRAB SAMPLER  
(CLOW)  
BMS

Copyright 2011 Japan Agency for Marine-Earth Science and  
Technology



**JAMSTEC** 国立研究開発法人  
海洋研究開発機構  
JAPAN AGENCY FOR MARINE-EARTH SCIENCE AND TECHNOLOGY

## MIRAI MR05-05 Leg3 Conductivity-Temperature-Depth Profiler (CTD)

Last Modified: 2017-04-11

[ReadMe](#) [Observation Data](#) [Data Format](#)

Cruise ID: [MR05-05 Leg3](#)

Conductivity-Temperature-Depth Profiler (CTD): Processed (PI)

Data Policy: [JAMSTEC](#)

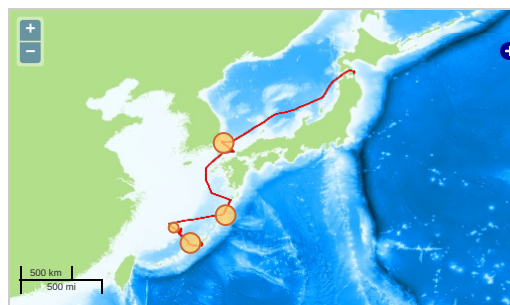
Observation Items: Pressure, Temperature, Salinity, Dissolved oxygen

Science Keywords:

OCEANS > OCEAN CHEMISTRY > OXYGEN  
OCEANS > OCEAN > WATER  
TEMPERATURE TEMPERATURE  
OCEANS > SALINITY/DENSITY > SALINITY

### Observation Map

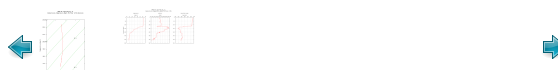
1. Clicking the icon displays a balloon with observation information.
2. Then click the observation name, figures will be displayed.



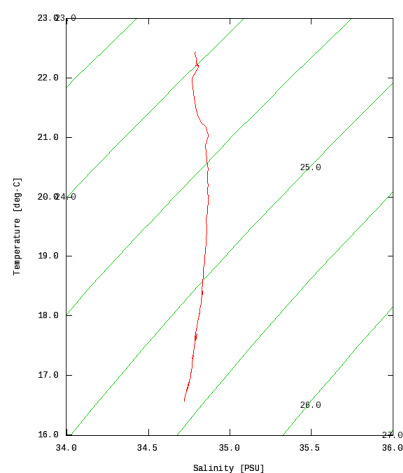
— ... Observation Line — ... Navigation ● ... Observation, Dive Point, Hole

### Figures

P03\_370\_1\_ct1



MR05-05 Leg3:P03\_370\_1\_ct1  
Conductivity-Temperature-Depth Profiler (CTD):Salinity




### Data List

[Add to Basket](#)

#### File names

- ☐ P03\_370\_1\_ct1.csv
- ☐ P03\_372\_1\_ct1.csv
- ☐ P03\_374\_1\_ct1.csv
- ☐ P03\_376\_1\_ct1.csv
- ☐ P03\_378\_1\_ct1.csv
- ☐ P03\_380\_1\_ct1.csv
- ☐ P03\_382\_1\_ct1.csv
- ☐ P03\_382\_2\_ct1.csv
- ☐ P03\_384\_1\_ct1.csv
- ☐ P03\_385\_1\_ct1.csv
- ☐ P03\_386\_1\_ct1.csv
- ☐ P03\_387\_1\_ct1.csv
- ☐ P03\_388\_1\_ct1.csv


 P03\_381\_1\_ct1.csv

 P03\_390\_1\_ct1.csv

 P03\_392\_1\_ct1.csv

 P03\_394\_1\_ct1.csv

 P03\_396\_1\_ct1.csv

 P03\_398\_1\_ct1.csv

 P03\_400\_1\_ct1.csv

 P03\_402\_1\_ct1.csv

 P03\_404\_1\_ct1.csv

 P03\_406\_1\_ct1.csv


 P03\_408\_1\_ct1.csv

 P03\_TS1\_1\_ct1.csv

 P03\_TS2\_1\_ct1.csv

 P03\_TS3\_1\_ct1.csv

 P03\_TS4\_1\_ct1.csv

 P03\_TS5\_1\_ct1.csv

 P03\_TS6\_1\_ct1.csv

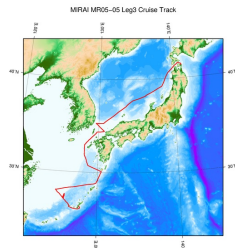
 P03\_TS7\_1\_ct1.csv

#### ● Observation List

The list of observation is shown as follows.

Observation	Time and Date	Lat. [°]	Lon. [°]
P03_370_1_ct1	2006-01-20 06:59	26.3885	126.7037
P03_372_1_ct1	2006-01-20 08:58	26.4503	126.6257
P03_374_1_ct1	2006-01-20 12:34	26.6048	126.5223
P03_376_1_ct1	2006-01-20 15:57	26.7397	126.3295
P03_378_1_ct1	2006-01-20 19:35	26.8913	126.1863
P03_380_1_ct1	2006-01-20 22:48	26.9698	126.0823
P03_382_1_ct1	2006-01-21 02:06	27.0740	125.9760
P03_382_2_ct1	2006-01-21 23:15	27.0743	125.9755
P03_384_1_ct1	2006-01-22 01:00	27.1650	125.8827
P03_385_1_ct1	2006-01-22 02:44	27.3142	125.7373
P03_386_1_ct1	2006-01-22 04:09	27.4535	125.5880
P03_387_1_ct1	2006-01-22 05:42	27.6060	125.4378
P03_388_1_ct1	2006-01-22 07:32	27.7493	125.2153
P03_389_1_ct1	2006-01-22 09:55	28.0018	124.9887
P03_390_1_ct1	2006-01-23 04:35	28.8568	129.8305
P03_392_1_ct1	2006-01-23 06:23	29.0043	129.9082
P03_394_1_ct1	2006-01-23 08:57	29.1075	129.9655
P03_396_1_ct1	2006-01-23 12:11	29.2945	130.0462
P03_398_1_ct1	2006-01-23 15:19	29.4162	130.1238
P03_400_1_ct1	2006-01-23 17:30	29.5865	130.1912
P03_402_1_ct1	2006-01-23 19:38	29.7425	130.2753
P03_404_1_ct1	2006-01-23 21:40	29.9438	130.3765
P03_406_1_ct1	2006-01-23 23:45	30.0287	130.4130
P03_408_1_ct1	2006-01-24 01:47	30.1132	130.4705
P03_TS1_1_ct1	2006-01-26 05:04	35.2703	129.6505
P03_TS2_1_ct1	2006-01-26 03:41	35.1947	129.7328
P03_TS3_1_ct1	2006-01-26 01:49	35.0092	129.9780
P03_TS4_1_ct1	2006-01-26 00:06	34.8340	130.1970
P03_TS5_1_ct1	2006-01-25 22:22	34.6635	130.4337
P03_TS6_1_ct1	2006-01-25 20:35	34.5028	130.6472
P03_TS7_1_ct1	2006-01-25 19:05	34.4232	130.7280

#### Related Information



 [Enlarge Image](#)

#### MR05-05 Leg3

Ship Name: MIRAI

Period: 2006-01-19 - 2006-01-30

Chief Scientist: Shuichi Watanabe (JAMSTEC)

Project Name: [POST-WOCE Hydrography]

#### Update History

2017-04-11	An observation data was registered.
2014-07-26	An observation data was registered.
2012-11-25	An observation data was registered.

#### JAMSTEC

[Site Policy](#)

[Privacy Policy](#)

[Application for Data and Samples](#)

[Data Policy](#)

[What's New](#)

[Update History](#)

[Feeds](#)

#### Lists

[Publication List](#)

[Amount of Public Info.](#)

#### Data

[Map Search](#)

[Data Tree](#)

[Detailed Search](#)

#### Information of the Ships

[NATSUSHIMA](#)

[KAIYO](#)

[YOKOSUKA](#)

[MIRAI](#)

[KAIREI](#)

[CHIKYU](#)

[KAIMEI](#)

[SHINSEI MARU](#)

[HAKUHO MARU](#)

#### Information of the Submersibles

[KAIKO](#)

[SHINKAI 2000](#)

[SHINKAI 6500](#)

[DEEP TOW](#)

[HYPER-DOLPHIN](#)

[URASHIMA](#)

[YOKOSUKA DEEP TOW](#)

[6K Camera DEEP TOW](#)

[6K Sonar DEEP TOW](#)

#### Go to a Cruise Information

Cruise ID:

#### Go to a Dive Information

Dive ID:

KM-ROV  
POWER GRAB SAMPLER  
(SHELL)  
POWER GRAB SAMPLER  
(CLOW)  
BMS

Copyright 2011 Japan Agency for Marine-Earth Science and Technology



**JAMSTEC** 国立研究開発法人  
海洋研究開発機構  
JAPAN AGENCY FOR MARINE-EARTH SCIENCE AND TECHNOLOGY