

## MIRAI MR99-K01 Total CO<sub>2</sub> (TCO<sub>2</sub>)

Last Modified: 2013-01-25

[ReadMe](#) [Observation Data](#) [Data Format](#)

Cruise ID: [MR99-K01](#)

Total CO<sub>2</sub> (TCO<sub>2</sub>): Processed (PI)

Data Policy: [JAMSTEC](#)

Observation Items: Total Dissolved inorganic carbon, Total alkalinity, Sea surface temperature, Sea surface salinity

Science Keywords:

OCEANS > OCEAN CHEMISTRY > INORGANIC CARBON  
OCEANS > SALINITY/DENSITY > SALINITY  
OCEANS > OCEAN TEMPERATURE > SEA SURFACE TEMPERATURE  
OCEANS > OCEAN CHEMISTRY > ALKALINITY

Cruise Report

[http://www.godac.jamstec.go.jp/catalog/data/doc\\_catalog/media/MR99-K01\\_all.pdf](http://www.godac.jamstec.go.jp/catalog/data/doc_catalog/media/MR99-K01_all.pdf)

### [For Using Data](#)

#### Principal Investigator

Masao Ishii (Meteorological Research Institute)

#### Use Constraints

See [Terms and Conditions](#) about constrain of use.

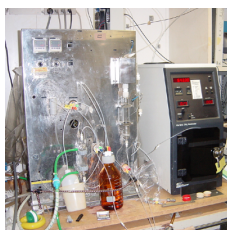
#### Data Citation

See [Terms and Conditions](#) about data citation.

### Instrument

Instrument:

TCO<sub>2</sub> measurement system ( - MR09-03 Leg3)



### Information on Underway TCO<sub>2</sub> data observed on R/V MIRAI

Instrument : Underway TCO<sub>2</sub> measuring system ; Nippon ANS Ltd.

Method : Coulometric

Precision : -

Reference Material/Calibration : Certified Reference Material for TCO<sub>2</sub> analysis provided by Dr A. G. Dickson

- Measured by Meteorological Research Institute using coulometric technique (Ishii, et al., 1998).

- Total alkalinity (TA) has been calculated from TCO<sub>2</sub>, SST, salinity and pCO<sub>2</sub> that have been concurrently measured using carbonic acid dissociation constants given by Roy et al., 1993.

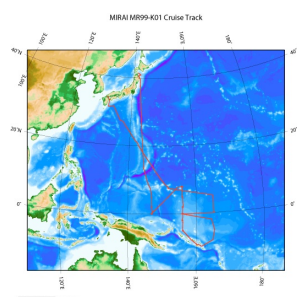
#### Reference

Masao Ishii, Hisayuki Y. Inoue, Hidekazu Matsueda and Eiichiro Tanoue (1998) Close coupling between seasonal biological production and dynamics of dissolved inorganic carbon in the Indian Ocean sector and the western Pacific Ocean sector of the Antarctic Ocean.  
Deep Sea Research Part I: Oceanographic Research Papers, Volume 45, 7, 1187-1209

Roy, R.N., L.N. Roy, K.M. Vogel, C.P. Moore, T. Pearson, C.E. Good, F. J. Millero and D.J. Cambell (1993) Determination of the ionization constants of carbonic acid in seawater in salinities 5 to 45 and temperatures 0 to 45 degree-C.

Marine Chemistry, 44, 249-267.

### Related Information



#### MR99-K01

Ship Name: MIRAI

Period: 1999-02-07 - 1999-03-31

Chief Scientist: Yoshifumi Kuroda (JAMSTEC)

Project Name: [Tropical Ocean Climate Study (TOCS)]

[Enlarge Image](#)

### Update History

2013-01-25 An observation data was registered.

JAMSTEC  
Site Policy  
Privacy Policy  
Application for Data and Samples  
Data Policy  
  
What's New  
Update History  
Feeds

Lists  
Publication List  
Amount of Public Info.  
  
Data  
Map Search  
Data Tree  
Detailed Search

Information of the Ships  
NATSUSHIMA  
KAIYO  
YOKOSUKA  
MIRAI  
KAIREI  
CHIKYU  
KAIMEI  
SHINSEI MARU  
HAKUHO MARU

Information of the Submersibles  
KAIKO  
SHINKAI 2000  
SHINKAI 6500  
DEEP TOW  
HYPER-DOLPHIN  
URASHIMA  
YOKOSUKA DEEP TOW  
6K Camera DEEP TOW  
6K Sonar DEEP TOW  
KM-ROV  
POWER GRAB SAMPLER (SHELL)  
POWER GRAB SAMPLER (CLOW)  
BMS

Go to a Cruise Information

Cruise ID:

Go to a Dive Information

Dive ID:

Copyright 2011 Japan Agency for Marine-Earth Science and Technology



**JAMSTEC** 国立研究開発法人  
海洋研究開発機構  
JAPAN AGENCY FOR MARINE-EARTH SCIENCE AND TECHNOLOGY

## MIRAI MR99-K01 Total CO<sub>2</sub> (TCO<sub>2</sub>)

Last Modified: 2013-01-25

[ReadMe](#) [Observation Data](#) [Data Format](#)

Cruise ID: [MR99-K01](#)

Total CO<sub>2</sub> (TCO<sub>2</sub>): Processed (PI)

Data Policy: [JAMSTEC](#)

### TCO<sub>2</sub> MRI

#### Data Format

The file is in variable length, comma separated text file (csv) format.

The line starts with "#" is a comment line which contains version information and so on.

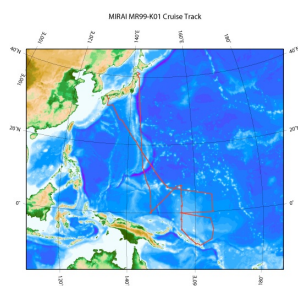
Column NO.	Column Heading	Comments
1	Ship	Ship name
2	Cruise	Cruise ID
3	Serial No.	Serial No.
4	Date	year (YYYY) in UTC
5		month (MM) in UTC
6		day (DD) in UTC
7	Time	hour (HH) in UTC
8		minute (MM) in UTC
9	Latitude	Latitude (degree) ; Positive in north
10	Longitude	Longitude (degree) ; degree in eastward (0 - 360)
11	TCO <sub>2</sub>	Total Dissolved inorganic carbon (umol/kg)
12	F	Quality flag for TCO <sub>2</sub>
13	TA_calcd	Total alkalinity (umol/kg) *
14	F	Quality flag for TA_calcd
15	SST	Sea surface temperature (degree-C)
16	F	Quality flag for SST
17	SSS	Sea surface salinity
18	F	Quality flag for SSS

\* : calculated from TCO<sub>2</sub>, SST, SSS and pCO<sub>2</sub> (Roy et al., 1993)

#### Definition of Quality Control Flags

- 2 - Good
- 3 - Questionable
- 4 - Bad
- 5 - Not reported
- 9 - No data

### Related Information



[Enlarge Image](#)

#### MR99-K01

Ship Name: MIRAI

Period: 1999-02-07 - 1999-03-31

Chief Scientist: Yoshifumi Kuroda (JAMSTEC)

Project Name: [Tropical Ocean Climate Study (TOCS)]

### Update History

2013-01-25 An observation data was registerd.

JAMSTEC  
Site Policy  
Privacy Policy  
Application for Data and Samples  
Data Policy  
What's New  
Update History  
Feeds

Lists  
Publication List  
Amount of Public Info.  
Data  
Map Search  
Data Tree  
Detailed Search

Information of the Ships  
NATSUSHIMA  
KAIYO  
YOKOSUKA  
MIRAI  
KAIREI  
CHIKYU  
KAIMEI  
SHINSEI MARU  
HAKUHO MARU

Information of the Submersibles  
KAIKO  
SHINKAI 2000  
SHINKAI 6500  
DEEP TOW  
HYPER-DOLPHIN  
URASHIMA  
YOKOSUKA DEEP TOW  
6K Camera DEEP TOW  
6K Sonar DEEP TOW  
KM-ROV  
POWER GRAB SAMPLER (SHELL)  
POWER GRAB SAMPLER (CLOW)  
BMS

#### Go to a Cruise Information

Cruise ID:

#### Go to a Dive Information

Dive ID:

## MIRAI MR99-K01 Total CO2 (TCO2)

Last Modified: 2013-01-25

[ReadMe](#) [Observation Data](#) [Data Format](#)

Cruise ID: [MR99-K01](#)

Total CO2 (TCO2): Processed (PI)

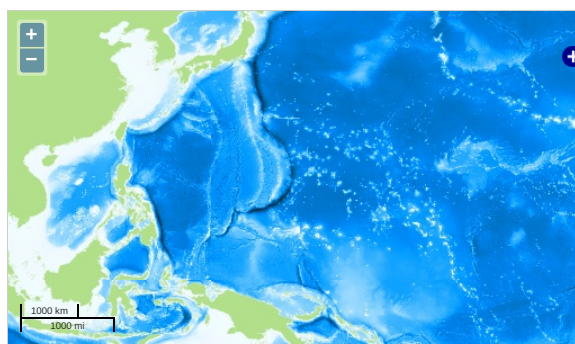
Data Policy: [JAMSTEC](#)

Observation Items: Total Dissolved inorganic carbon, Total alkalinity, Sea surface temperature, Sea surface salinity

Science Keywords:

OCEANS > OCEAN CHEMISTRY > INORGANIC CARBON  
OCEANS > SALINITY/DENSITY > SALINITY  
OCEANS > OCEAN TEMPERATURE > SEA SURFACE TEMPERATURE  
OCEANS > OCEAN CHEMISTRY > ALKALINITY

### Observation Map



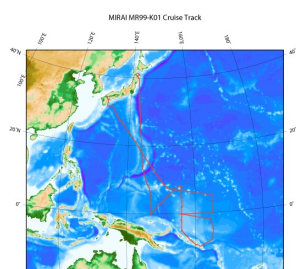
— ... Observation Line — ... Navigation ● ... Observation, Dive Point, Hole

### Data List

File names

☐ MR99-K01\_tco2.zip

### Related Information



#### MR99-K01

Ship Name: MIRAI

Period: 1999-02-07 - 1999-03-31

Chief Scientist: Yoshifumi Kuroda (JAMSTEC)

Project Name: [Tropical Ocean Climate Study (TOCS)]

[Enlarge Image](#)

### Update History

2013-01-25 An observation data was registered.

#### JAMSTEC

[Site Policy](#)  
[Privacy Policy](#)  
[Application for Data and Samples](#)  
[Data Policy](#)

#### What's New

[Update History](#)  
[Feeds](#)

#### Lists

[Publication List](#)  
[Amount of Public Info.](#)

#### Data

[Map Search](#)  
[Data Tree](#)  
[Detailed Search](#)

#### Information of the Ships

[NATSUSHIMA](#)  
[KAIYO](#)  
[YOKOSUKA](#)  
[MIRAI](#)  
[KAIREI](#)  
[CHIKYU](#)  
[KAIMEI](#)  
[SHINSEI MARU](#)  
[HAKUHO MARU](#)

#### Information of the Submersibles

[KAIKO](#)  
[SHINKAI 2000](#)  
[SHINKAI 6500](#)  
[DEEP TOW](#)  
[HYPER-DOLPHIN](#)  
[URASHIMA](#)  
[YOKOSUKA DEEP TOW](#)  
[6K Camera DEEP TOW](#)  
[6K Sonar DEEP TOW](#)  
[KM-ROV](#)  
[POWER GRAB SAMPLER \(SHELL\)](#)  
[POWER GRAB SAMPLER \(CLOW\)](#)  
[BMS](#)

#### Go to a Cruise Information

Cruise ID:

#### Go to a Dive Information

Dive ID: