

MIRAI MR07-06 Leg2 Conductivity-Temperature-Depth Profiler (CTD)

Last Modified: 2017-04-11

[ReadMe](#) [Observation Data](#) [Data Format](#)

Cruise ID: [MR07-06 Leg2](#)

Conductivity-Temperature-Depth Profiler (CTD): Processed (PI)

Data Policy: [JAMSTEC](#)

Observation Items: Pressure, Temperature, Salinity, Dissolved oxygen

Science Keywords:

OCEANS > OCEAN CHEMISTRY > OXYGEN
OCEANS > OCEAN TEMPERATURE > WATER TEMPERATURE
OCEANS > SALINITY/DENSITY > SALINITY

Cruise Report

http://www.godac.jamstec.go.jp/catalog/data/doc_catalog/media/MR07-06_leg1-2_all.pdf

[For Using Data](#)

Principal Investigator

Hiroshi Uchida (JAMSTEC)

Use Constraints

See [Terms and Conditions](#) about constrain of use.

Data Citation

See [Terms and Conditions](#) about data citation.

Instrument

Instrument:

Water sampling system with CTD (30
litters * 24 bottles)



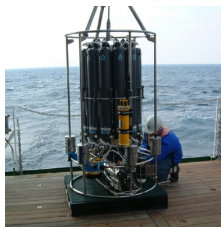
Instrument:

Water sampling system with CTD (12
litters * 36 bottles)



Instrument:

Water sampling system with CTD (12
litters * 12 bottles)



Instrument:

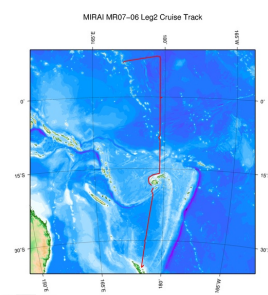
Conductivity temperature depth
measurements (CTD)



Overview

Please see the [Data book](#) for details of data.

Related Information



[Enlarge Image](#)

MR07-06 Leg2

Ship Name: MIRAI
Period: 2007-11-21 - 2007-12-25
Chief Scientist: Akihiko Murata (JAMSTEC)
Project Name: [POST-WOCE Hydrography]

Update History

2017-04-11	An observation data was registerd.
2014-07-30	An observation data was registerd.
2012-10-27	An observation data was registerd.

JAMSTEC

Site Policy
Privacy Policy
Application for Data and
Samples
Data Policy

What's New

Update History
Feeds

Lists

Publication List
Amount of Public Info.

Data

Map Search
Data Tree
Detailed Search

Information of the Ships

NATSUSHIMA
KAIYO
YOKOSUKA
MIRAI
KAIREI
CHIKYU
KAIMEI
SHINSEI MARU
HAKUHO MARU

Information of the
Submersibles

KAIKO
SHINKAI 2000
SHINKAI 6500
DEEP TOW
HYPER-DOLPHIN
URASHIMA
YOKOSUKA DEEP TOW
6K Camera DEEP TOW
6K Sonar DEEP TOW
KM-ROV
POWER GRAB SAMPLER
(SHELL)
POWER GRAB SAMPLER
(CLOW)
BMS

Go to a Cruise Information

Cruise ID:

Go to a Dive Information

Dive ID:

Copyright 2011 Japan Agency for Marine-Earth Science and
Technology



JAMSTEC
JAPAN AGENCY FOR MARINE-EARTH SCIENCE AND TECHNOLOGY

国立研究開発法人
海洋研究開発機構

MIRAI MR07-06 Leg2 Conductivity-Temperature-Depth Profiler (CTD)

Last Modified: 2017-04-11

[ReadMe](#) [Observation Data](#) [Data Format](#)

Cruise ID: [MR07-06 Leg2](#)

Conductivity-Temperature-Depth Profiler (CTD): Processed (PI)

Data Policy: [JAMSTEC](#)

CTD WOCE-type1

Format Description for the Processed (PI) Data

Provided in the Exchange Format of CCHDO (CLIVAR and Carbon Hydrographic Data Office). Please see the following link for details of Exchange Format.

[CCHDO | CLIVAR & Carbon Hydrographic Data Office](#)

Data in following cruise is not expressed with Exchange Format. Please see the site of each cruise for format.

MR02-K05 Leg1

MR04-05

Format Description for the QCed Data

Each data file contains one line header (meta data) followed by data lines for each cast.

The number of data lines are recorded in the header.

Header part

No.	Column	Content	Format	Remarks
1	1	Header ID	a1	fixed as '#'
2	3 - 6	Data ID	a4	CTD
3	8 - 22	Cruise ID	a15	MRYY-(K)XX(_legx)
4	24 - 31	Cast name	a8	
5	33 - 40	Date	i8	YYYYMMDD (UTC)
6	42 - 45	Time	i4	hhmm (UTC)
7	47 - 55	Latitude	i2,a1,f5.2,a1	dd-mm.mmN(S)
8	57 - 66	Longitude	i3,a1,f5.2,a1	ddd-mm.mmE(W)
9	68 - 71	Number of data lines	i4	
10	72 - 73	Terminator	-	CR+LF

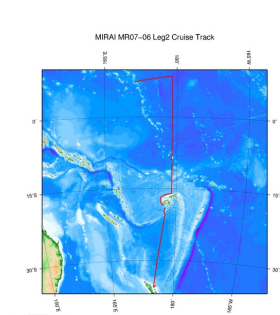
Data part

No.	Column	Content	Unit	Format	Remarks
1	1 - 11	Pressure	dbar	f11.3	
2	12 - 22	Temperature	deg-C	f11.4	ITS-90
3	23 - 33	Salinity	PSU	f11.4	PSS-78
4	34 - 44	Dissolved oxygen	umol/kg	f11.3	
5	45 - 55	Flag	-	i11	1 - 7 : space 8 : flag of pressure 9 : flag of temperature 10 : flag of salinity 11 : flag of dissolved oxygen * reference : Definition of Quality Control Flags
6	56 - 57	Terminator	-	-	CR+LF

Each contents of the data part is stored in 11 bytes.

Missing value is presented by '-5', and error value is presented by '-9'.

Related Information



[Enlarge Image](#)

MR07-06 Leg2

Ship Name: MIRAI
Period: 2007-11-21 - 2007-12-25
Chief Scientist: Akihiko Murata (JAMSTEC)
Project Name: [POST-WOCE Hydrography]

Update History

2017-04-11	An observation data was registerd.
2014-07-30	An observation data was registerd.
2012-10-27	An observation data was registerd.

Update History
Feeds

SHINSEI MARU
HAKUHO MARU

YOKOSUKA DEEP TOW
6K Camera DEEP TOW
6K Sonar DEEP TOW
KM-ROV
POWER GRAB SAMPLER
(SHELL)
POWER GRAB SAMPLER
(CLOW)
BMS

Copyright 2011 Japan Agency for Marine-Earth Science and
Technology



JAMSTEC 国立研究開発法人
海洋研究開発機構
JAPAN AGENCY FOR MARINE-EARTH SCIENCE AND TECHNOLOGY

MIRAI MR07-06 Leg2 Conductivity-Temperature-Depth Profiler (CTD)

Last Modified: 2017-04-11

[ReadMe](#) [Observation Data](#) [Data Format](#)

Cruise ID: [MR07-06 Leg2](#)

Conductivity-Temperature-Depth Profiler (CTD): Processed (PI)

Data Policy: [JAMSTEC](#)

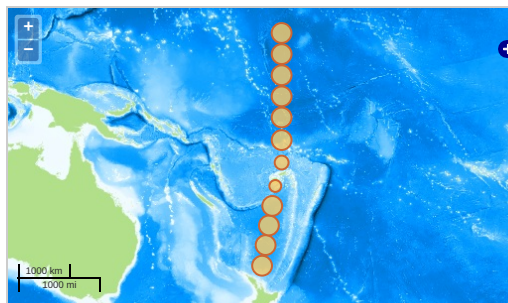
Observation Items: Pressure, Temperature, Salinity, Dissolved oxygen

Science Keywords:

OCEANS > OCEAN CHEMISTRY > OXYGEN
OCEANS > OCEAN > WATER
TEMPERATURE TEMPERATURE
OCEANS > SALINITY/DENSITY > SALINITY

Observation Map

1. Clicking the icon displays a balloon with observation information.
2. Then click the observation name, figures will be displayed.

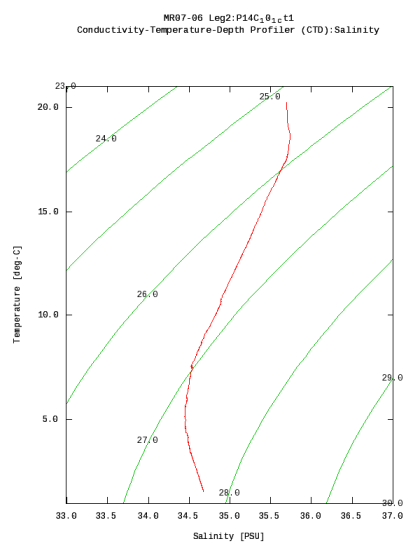


— ... Observation Line — ... Navigation ● ... Observation, Dive Point, Hole

Imagery reproduced from ...

Figures

P14C_10_1_ct1




Data List

[Add to Basket](#)

File names

<input type="checkbox"/>	P14C_10_1_ct1.csv
<input type="checkbox"/>	P14C_11_1_ct1.csv
<input type="checkbox"/>	P14C_12_1_ct1.csv
<input type="checkbox"/>	P14C_13_1_ct1.csv
<input type="checkbox"/>	P14C_14_1_ct1.csv
<input type="checkbox"/>	P14C_15_1_ct1.csv
<input type="checkbox"/>	P14C_16_1_ct1.csv
<input type="checkbox"/>	P14C_18_1_ct1.csv
<input type="checkbox"/>	P14C_19_1_ct1.csv
<input type="checkbox"/>	P14C_1_1_ct1.csv
<input type="checkbox"/>	P14C_20_1_ct1.csv
<input type="checkbox"/>	P14C_21_1_ct1.csv
<input type="checkbox"/>	P14C_22_1_ct1.csv

	P14C_23_1_ct1.csv
	P14C_24_1_ct1.csv
	P14C_25_1_ct1.csv
	P14C_26_1_ct1.csv
	P14C_27_1_ct1.csv
	P14C_28_1_ct1.csv
	P14C_29_1_ct1.csv
	P14C_2_1_ct1.csv
	P14C_30_1_ct1.csv
	P14C_31_1_ct1.csv
	P14C_32_1_ct1.csv
	P14C_33_1_ct1.csv
	P14C_34_1_ct1.csv
	P14C_35_1_ct1.csv
	P14C_36_1_ct1.csv
	P14C_37_1_ct1.csv
	P14C_38_1_ct1.csv
	P14C_39_1_ct1.csv
	P14C_3_1_ct1.csv
	P14C_40_1_ct1.csv
	P14C_41_1_ct1.csv
	P14C_42_1_ct1.csv
	P14C_43_1_ct1.csv
	P14C_44_1_ct1.csv
	P14C_45_1_ct1.csv
	P14C_46_1_ct1.csv
	P14C_47_1_ct1.csv
	P14C_48_1_ct1.csv
	P14C_49_1_ct1.csv
	P14C_4_1_ct1.csv
	P14C_50_1_ct1.csv
	P14C_51_1_ct1.csv
	P14C_52_1_ct1.csv
	P14C_5_1_ct1.csv
	P14C_6_1_ct1.csv
	P14C_7_1_ct1.csv
	P14C_8_1_ct1.csv
	P14C_9_1_ct1.csv
	P14C_X06_1_ct1.csv
	P14N_109_2_ct1.csv
	P14N_110_1_ct1.csv
	P14N_111_1_ct1.csv
	P14N_112_1_ct1.csv
	P14N_113_1_ct1.csv
	P14N_114_1_ct1.csv
	P14N_115_1_ct1.csv
	P14N_116_1_ct1.csv
	P14N_117_1_ct1.csv
	P14N_118_1_ct1.csv
	P14N_119_1_ct1.csv
	P14N_120_1_ct1.csv
	P14N_121_1_ct1.csv
	P14N_122_1_ct1.csv
	P14N_123_1_ct1.csv
	P14N_124_1_ct1.csv
	P14N_125_1_ct1.csv
	P14N_126_1_ct1.csv
	P14N_127_1_ct1.csv
	P14N_128_1_ct1.csv
	P14N_129_1_ct1.csv
	P14N_130_1_ct1.csv
	P14N_131_1_ct1.csv
	P14N_132_1_ct1.csv
	P14N_133_1_ct1.csv
	P14N_134_1_ct1.csv
	P14N_135_1_ct1.csv
	P14N_136_1_ct1.csv
	P14N_137_1_ct1.csv
	P14N_138_1_ct1.csv
	P14N_139_1_ct1.csv
	P14N_140_2_ct1.csv
	P14N_141_1_ct1.csv
	P14N_142_1_ct1.csv
	P14N_143_1_ct1.csv
	P14N_144_1_ct1.csv
	P14N_145_1_ct1.csv
	P14N_146_1_ct1.csv
	P14N_147_1_ct1.csv
	P14N_148_1_ct1.csv
	P14N_149_1_ct1.csv
	P14N_150_1_ct1.csv
	P14N_151_1_ct1.csv

 P14N_153_1_ct1.csv
 P14N_154_1_ct1.csv
 P14N_155_1_ct1.csv
 P14N_156_1_ct1.csv
 P14N_157_1_ct1.csv
 P14N_158_1_ct1.csv
 P14N_159_1_ct1.csv
 P14N_160_1_ct1.csv
 P14N_161_1_ct1.csv
 P14N_162_1_ct1.csv
 P14N_163_1_ct1.csv
 P14N_164_1_ct1.csv
 P14N_165_1_ct1.csv
 P14N_166_1_ct1.csv
 P14N_167_1_ct1.csv
 P14N_168_1_ct1.csv
 P14N_169_1_ct1.csv
 P14N_170_1_ct1.csv
 P14N_171_1_ct1.csv
 P14N_172_1_ct1.csv
 P14N_173_1_ct1.csv
 P14N_174_1_ct1.csv
 P14N_175_1_ct1.csv
 P14N_176_1_ct1.csv
 P14N_177_1_ct1.csv
 P14N_178_2_ct1.csv
 P14N_179_1_ct1.csv
 P14N_180_1_ct1.csv
 P14N_181_1_ct1.csv
 P14N_182_1_ct1.csv
 P14N_183_1_ct1.csv
 P14N_184_1_ct1.csv
 P14N_185_1_ct1.csv

● Observation List
The list of observation is shown as follows.

Observation	Time and Date	Lat. [°]	Lon. [°]
P14C_10_1_ct1	2007-12-21 16:33	-32.8168	175.5278
P14C_11_1_ct1	2007-12-21 11:45	-32.6027	175.5537
P14C_12_1_ct1	2007-12-21 06:41	-32.1695	175.6365
P14C_13_1_ct1	2007-12-21 01:40	-31.7435	175.7163
P14C_14_1_ct1	2007-12-20 20:47	-31.3065	175.7892
P14C_15_1_ct1	2007-12-20 15:52	-30.8795	175.8580
P14C_16_1_ct1	2007-12-20 10:54	-30.4468	175.9343
P14C_18_1_ct1	2007-12-20 00:32	-29.5733	176.0825
P14C_19_1_ct1	2007-12-19 19:59	-29.1527	176.1505
P14C_1_1_ct1	2007-12-22 22:53	-35.6343	175.0345
P14C_20_1_ct1	2007-12-19 15:04	-28.7065	176.2223
P14C_21_1_ct1	2007-12-19 10:10	-28.2725	176.2968
P14C_22_1_ct1	2007-12-19 05:05	-27.8367	176.3652
P14C_23_1_ct1	2007-12-19 00:05	-27.4142	176.4472
P14C_24_1_ct1	2007-12-18 19:12	-26.9792	176.5268
P14C_25_1_ct1	2007-12-18 13:55	-26.5417	176.5963
P14C_26_1_ct1	2007-12-18 08:57	-26.1042	176.6637
P14C_27_1_ct1	2007-12-18 04:00	-25.6677	176.7340
P14C_28_1_ct1	2007-12-17 22:52	-25.2347	176.8073
P14C_29_1_ct1	2007-12-17 17:42	-24.7948	176.8847
P14C_2_1_ct1	2007-12-22 20:36	-35.4538	175.0707
P14C_30_1_ct1	2007-12-17 12:19	-24.3630	176.9547
P14C_31_1_ct1	2007-12-17 07:19	-23.9583	177.0322
P14C_32_1_ct1	2007-12-17 02:01	-23.4842	177.1115
P14C_33_1_ct1	2007-12-16 21:02	-23.0650	177.1823
P14C_34_1_ct1	2007-12-16 15:55	-22.6260	177.2585
P14C_35_1_ct1	2007-12-16 10:49	-22.1993	177.3278
P14C_36_1_ct1	2007-12-16 05:56	-21.7682	177.4007
P14C_37_1_ct1	2007-12-16 01:03	-21.4242	177.4658
P14C_38_1_ct1	2007-12-15 20:37	-21.1182	177.5132
P14C_39_1_ct1	2007-12-15 15:59	-20.8650	177.5538
P14C_3_1_ct1	2007-12-22 17:57	-35.2305	175.1080
P14C_40_1_ct1	2007-12-15 11:35	-20.6287	177.5923
P14C_41_1_ct1	2007-12-15 07:23	-20.3723	177.6367
P14C_42_1_ct1	2007-12-15 01:57	-20.1298	177.5367
P14C_43_1_ct1	2007-12-14 21:43	-19.8158	177.4005
P14C_44_1_ct1	2007-12-14 17:35	-19.6340	177.3642
P14C_45_1_ct1	2007-12-14 13:10	-19.3963	177.4890
P14C_46_1_ct1	2007-12-14 08:47	-19.2115	177.5775
P14C_47_1_ct1	2007-12-14 04:44	-19.0475	177.6410
P14C_48_1_ct1	2007-12-13 12:41	-18.8843	177.7495
P14C_49_1_ct1	2007-12-13 16:22	-18.7510	177.8275
P14C_4_1_ct1	2007-12-22 15:20	-35.0205	175.1485
P14C_50_1_ct1	2007-12-14 01:17	-18.6615	177.8738
P14C_51_1_ct1	2007-12-13 22:19	-18.5977	177.9330

Observation	Time and Date	Lat (°)	Lon (°)
P14C_32_1_ct1	2007-12-13 19:31	-18.5365	177.9285
P14C_5_1_ct1	2007-12-22 12:30	-34.8262	175.1848
P14C_6_1_ct1	2007-12-22 09:15	-34.4658	175.2432
P14C_7_1_ct1	2007-12-22 05:59	-34.1323	175.3007
P14C_8_1_ct1	2007-12-22 02:11	-33.7028	175.3882
P14C_9_1_ct1	2007-12-21 21:41	-33.2573	175.4578
P14C_X06_1_ct1	2007-12-20 06:03	-30.0800	175.8347
P14N_109_2_ct1	2007-11-23 19:12	8.5048	178.9915
P14N_110_1_ct1	2007-11-24 02:13	8.2603	179.0028
P14N_111_1_ct1	2007-11-24 07:55	8.0018	179.0050
P14N_112_1_ct1	2007-11-24 13:49	7.7487	179.0115
P14N_113_1_ct1	2007-11-24 19:49	7.4938	178.9943
P14N_114_1_ct1	2007-11-25 01:28	7.2372	179.0043
P14N_115_1_ct1	2007-11-25 06:51	6.9963	179.0053
P14N_116_1_ct1	2007-11-25 12:25	6.7423	179.0082
P14N_117_1_ct1	2007-11-25 18:12	6.4938	178.9962
P14N_118_1_ct1	2007-11-25 23:49	6.2393	178.9980
P14N_119_1_ct1	2007-11-26 05:16	6.0068	178.9960
P14N_120_1_ct1	2007-11-26 10:55	5.7530	179.0032
P14N_121_1_ct1	2007-11-26 16:19	5.4915	178.9988
P14N_122_1_ct1	2007-11-26 22:15	5.2465	178.9938
P14N_123_1_ct1	2007-11-27 04:34	4.9965	178.9947
P14N_124_1_ct1	2007-11-27 10:36	4.7487	179.0013
P14N_125_1_ct1	2007-11-27 16:09	4.4812	179.0102
P14N_126_1_ct1	2007-11-27 21:58	4.2410	179.0078
P14N_127_1_ct1	2007-11-28 03:30	3.9923	179.0067
P14N_128_1_ct1	2007-11-28 08:57	3.7433	179.0003
P14N_129_1_ct1	2007-11-28 14:02	3.5013	179.0023
P14N_130_1_ct1	2007-11-28 19:54	3.2513	178.9928
P14N_131_1_ct1	2007-11-29 01:28	2.9982	179.0088
P14N_132_1_ct1	2007-11-29 07:07	2.7468	178.9990
P14N_133_1_ct1	2007-11-29 12:35	2.4970	179.0017
P14N_134_1_ct1	2007-11-29 18:04	2.2465	178.9945
P14N_135_1_ct1	2007-11-29 23:59	1.9980	178.9912
P14N_136_1_ct1	2007-11-30 05:37	1.7517	178.9943
P14N_137_1_ct1	2007-11-30 11:24	1.5050	178.9983
P14N_138_1_ct1	2007-11-30 17:10	1.2500	179.0023
P14N_139_1_ct1	2007-11-30 22:59	1.0053	178.9958
P14N_140_2_ct1	2007-12-01 05:13	0.7428	178.9878
P14N_141_1_ct1	2007-12-01 10:54	0.5005	179.0002
P14N_142_1_ct1	2007-12-01 16:38	0.2505	178.9972
P14N_143_1_ct1	2007-12-01 22:14	0.0017	179.0012
P14N_144_1_ct1	2007-12-02 03:54	-0.2453	178.9933
P14N_145_1_ct1	2007-12-03 09:19	-0.4928	178.9997
P14N_146_1_ct1	2007-12-03 14:54	-0.7408	179.0063
P14N_147_1_ct1	2007-12-03 20:34	-0.9942	179.0007
P14N_148_1_ct1	2007-12-04 02:17	-1.2473	178.9988
P14N_149_1_ct1	2007-12-04 07:52	-1.5478	179.0023
P14N_150_1_ct1	2007-12-04 13:23	-1.7408	178.9977
P14N_151_1_ct1	2007-12-04 19:09	-1.9980	179.0033
P14N_152_1_ct1	2007-12-05 00:47	-2.2512	178.9990
P14N_153_1_ct1	2007-12-05 06:19	-2.4962	178.9992
P14N_154_1_ct1	2007-12-05 11:50	-2.7460	178.9987
P14N_155_1_ct1	2007-12-05 17:42	-2.9850	178.9960
P14N_156_1_ct1	2007-12-05 23:19	-3.2407	178.9962
P14N_157_1_ct1	2007-12-06 04:50	-3.4955	179.0032
P14N_158_1_ct1	2007-12-06 10:19	-3.7483	178.9978
P14N_159_1_ct1	2007-12-06 16:03	-4.0070	179.0032
P14N_160_1_ct1	2007-12-06 21:53	-4.2582	178.9943
P14N_161_1_ct1	2007-12-07 03:46	-4.5078	179.0088
P14N_162_1_ct1	2007-12-07 09:34	-4.7552	179.0052
P14N_163_1_ct1	2007-12-07 15:09	-4.9985	179.0010
P14N_164_1_ct1	2007-12-07 21:49	-5.4935	178.9995
P14N_165_1_ct1	2007-12-08 04:32	-6.0088	179.0070
P14N_166_1_ct1	2007-12-08 10:31	-6.4958	178.9972
P14N_167_1_ct1	2007-12-08 16:36	-7.0008	178.9940
P14N_168_1_ct1	2007-12-08 21:54	-7.5000	178.9960
P14N_169_1_ct1	2007-12-09 02:34	-7.9967	179.0012
P14N_170_1_ct1	2007-12-09 08:22	-8.5038	178.7483
P14N_171_1_ct1	2007-12-09 14:15	-9.0032	178.9987
P14N_172_1_ct1	2007-12-09 20:24	-9.5005	178.9983
P14N_173_1_ct1	2007-12-10 02:01	-10.0058	178.9975
P14N_174_1_ct1	2007-12-10 07:33	-10.5087	178.9968
P14N_175_1_ct1	2007-12-10 12:45	-11.0035	178.9993
P14N_176_1_ct1	2007-12-10 17:25	-11.5110	178.9958
P14N_177_1_ct1	2007-12-10 21:48	-12.0043	179.0085
P14N_178_2_ct1	2007-12-11 05:08	-12.5122	179.0160
P14N_179_1_ct1	2007-12-11 09:13	-12.9990	178.9925
P14N_180_1_ct1	2007-12-11 13:08	-13.4933	179.0045
P14N_181_1_ct1	2007-12-11 17:22	-13.9978	179.0020
P14N_182_1_ct1	2007-12-11 21:08	-14.5000	178.9968
P14N_183_1_ct1	2007-12-12 01:07	-14.9937	178.9915

Observation	Time and Date	Lat. [°]	Lon. [°]
P14N_184_1_ct1	2007-12-12 05:21	-15.4947	178.9942
P14N_185_1_ct1	2007-12-12 09:11	-15.9752	178.9977

Related Information

MR07-06 Leg2

Ship Name: MIRAI

Period: 2007-11-21 - 2007-12-25

Chief Scientist: Akihiko Murata (JAMSTEC)

Project Name: [POST-WOCE Hydrography]

[Enlarge Image](#)

Update History

2017-04-11	An observation data was registered.
2014-07-30	An observation data was registered.
2012-10-27	An observation data was registered.

JAMSTEC

Site Policy

Privacy Policy

Application for Data and Samples

Data Policy

What's New

Update History

Feeds

Lists

Publication List

Amount of Public Info.

Data

Map Search

Data Tree

Detailed Search

Information of the Ships

NATSUSHIMA

KAIYO

YOKOSUKA

MIRAI

KAIREI

CHIKYU

KAIMEI

SHINSEI MARU

HAKUHO MARU

Information of the Submersibles

KAIKO

SHINKAI 2000

SHINKAI 6500

DEEP TOW

HYPER-DOLPHIN

URASHIMA

YOKOSUKA DEEP TOW

6K Camera DEEP TOW

6K Sonar DEEP TOW

KM-ROV

POWER GRAB SAMPLER (SHELL)

POWER GRAB SAMPLER (CLOW)

BMS

Go to a Cruise Information

Cruise ID:

Go to a Dive Information

Dive ID:

Copyright 2011 Japan Agency for Marine-Earth Science and Technology

JAMSTEC 国立研究開発法人
海洋研究開発機構
JAPAN AGENCY FOR MARINE-EARTH SCIENCE AND TECHNOLOGY