

KAIMEI KM18-05C Precipitable water vapor (GNSS water vapor)

Last Modified: 2018-09-30

[ReadMe](#) [Observation Data](#) [Data Format](#)

Cruise ID: [KM18-05C](#)

Precipitable water vapor (GNSS water vapor): Processed (DMO)-Corrected

Data Policy: [JAMSTEC](#)

Observation Items: Precipitable water vapor (GNSS water vapor)

Science Keywords:

ATMOSPHERE > ATMOSPHERIC WATER VAPOR > WATER VAPOR

Cruise Report

http://www.godac.jamstec.go.jp/catalog/data/doc_catalog/media/KM18-05C_all.pdf

[For Using Data](#)

Principal Investigator

Data Management Office

Use Constraints

See [Terms and Conditions](#) about constrain of use.

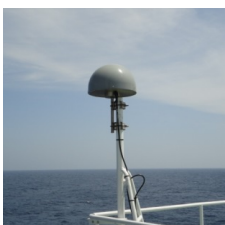
Data Citation

See [Terms and Conditions](#) about data citation.

Instrument

Instrument:

GPS water vapor observation system



Overview

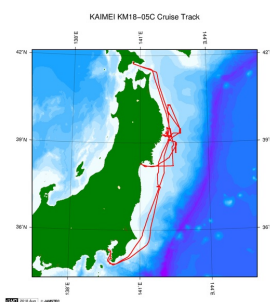
The data provided here is precipitable water vapor (column water vapor) estimated from GNSS observation on R/V KAIMEI. See [here](#) for detailed processing methods.

Measurement System

GNSS receiver [model/manufacture]:	NetR9 Ti-1/Trimble
GNSS antenna [model/manufacture]:	GNSS-Ti Choke Ring Antenna with radome/Trimble
Antenna location:	compass deck (18 meters high from sea surface)
Received satellite:	GPS, GLONASS, QZSS
Sampling interval:	5 sec
Elevation mask:	5 degrees (However, set to 10 degrees in the data processing provided here)

Related Information

☒ Cruise Data ☐ Dive Data



[Enlarge Image](#)

[KM18-05C](#)

Ship Name: KAIMEI
Period: 2018-05-29 - 2018-06-17
Chief Scientist: Shinji Tsuchida (JAMSTEC)
Project Name: [Tohoku Ecosystem-Associated Marine Sciences (TEAMS)]
Proposal Title: Researches on marine ecosystem dynamics in the Tsunami affected area off Sanriku

Update History

2018-09-30	An observation data was registerd.
------------	------------------------------------

JAMSTEC
[Site Policy](#)
[Privacy Policy](#)
[Application for Data and Samples](#)
[Data Policy](#)

[What's New](#)
[Update History](#)
[Feeds](#)

[Lists](#)
[Publication List](#)
[Amount of Public Info.](#)

[Data](#)
[Map Search](#)
[Data Tree](#)
[Detailed Search](#)

[Information of the Ships](#)
NATSUSHIMA
KAIYO
YOKOSUKA
MIRAI
KAIREI
CHIKYU
KAIMEI
SHINSEI MARU
HAKUHO MARU

[Information of the Submersibles](#)
KAIKO
SHINKAI 2000
SHINKAI 6500
DEEP TOW
HYPER-DOLPHIN
URASHIMA
YOKOSUKA DEEP TOW
6K Camera DEEP TOW
6K Sonar DEEP TOW
KM-ROV

[Go to a Cruise Information](#)

Cruise ID:

[Go to a Dive Information](#)

Dive ID:

POWER GRAB SAMPLER
(SHELL)
POWER GRAB SAMPLER
(CLOW)
BMS

Copyright 2011 Japan Agency for Marine-Earth Science and
Technology



JAMSTEC 国立研究開発法人
海洋研究開発機構
JAPAN AGENCY FOR MARINE-EARTH SCIENCE AND TECHNOLOGY

KAIMEI KM18-05C Precipitable water vapor (GNSS water vapor)

Last Modified: 2018-09-30

[ReadMe](#) [Observation Data](#) [Data Format](#)

Cruise ID: **KM18-05C**

Precipitable water vapor (GNSS water vapor) Processed (DMO)-Corrected

Data Policy: [JAMSTEC](#)

Precipitable water vapor (GNSS water vapor)

Single space separated.

No.	Column	Content	Unit	Format (nodata or baddata)	Remarks
1	1-8	Date [YYYYMMDD]		i8	Every 10 minutes* * Time stamp is set at the end of average
2	10-13	Time [hhmm]		i4	Every 10 minutes*
3	15-24	Longitude [-180 to 180]	degree	f10.5 (999.99999)	Location at time stamp +:East longitude -:West longitude
4	26-34	Latitude [-90 to 90]	degree	f9.5 (999.99999)	Location at time stamp +:North latitude -:South latitude
5	36-41	Precipitable water vapor (column water vapor)	mm	f6.2 (999.99)	10-minute mean*

Data Example

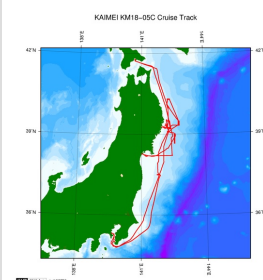
```

YYYYMMDD hhmm Lon Lat PWV
20170422 0030 130.92555 33.93327 15.15
20170422 0040 130.93252 33.94054 15.20
20170422 0050 130.95647 33.95871 15.28
20170422 0100 130.99144 33.97308 15.47

```

Related Information

[Cruise Data](#) [Dive Data](#)



[Enlarge Image](#)

KM18-05C

Ship Name: KAIMEI

Period: 2018-05-29 - 2018-06-17

Chief Scientist: Shinji Tsuchida (JAMSTEC)

Project Name: [Tohoku Ecosystem-Associated Marine Sciences (TEAMS)]

Proposal Researches on marine ecosystem dynamics in the Tsunami affected area off Sanriku

Title:

Update History

2018-09-30 An observation data was registered.

JAMSTEC
Site Policy
Privacy Policy
Application for Data and Samples
Data Policy
What's New
Update History
Feeds

Lists
Publication List
Amount of Public Info.
Data
Map Search
Data Tree
Detailed Search

Information of the Ships
NATSUSHIMA
KAIYO
YOKOSUKA
MIRAI
KAIREI
CHIKYU
KAIMEI
SHINSEI MARU
HAKUHO MARU

Information of the Submersibles
KAIKO
SHINKAI 2000
SHINKAI 6500
DEEP TOW
HYPER-DOLPHIN
URASHIMA
YOKOSUKA DEEP TOW
6K Camera DEEP TOW
6K Sonar DEEP TOW
KM-ROV
POWER GRAB
SAMPLER (SHELL)
POWER GRAB
SAMPLER (CLOW)
BMS

Go to a Cruise Information

Cruise ID:

Go to a Dive Information

Dive ID:

KAIMEI KM18-05C Precipitable water vapor (GNSS water vapor)

Last Modified: 2018-09-30

[ReadMe](#) [Observation Data](#) [Data Format](#)

Cruise ID: [KM18-05C](#)

Precipitable water vapor (GNSS water vapor): Processed (DMO)-Corrected

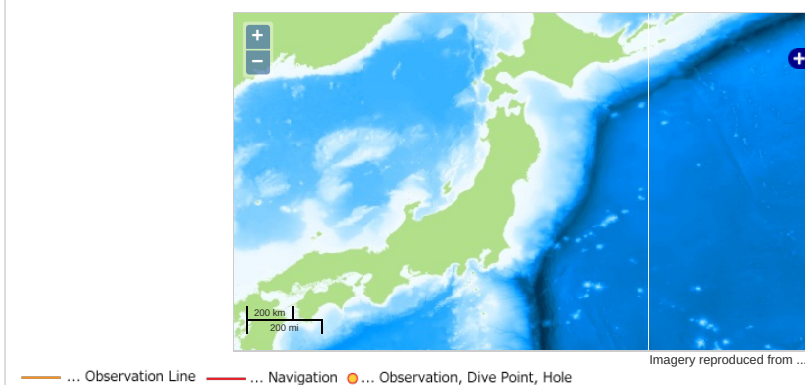
Data Policy: [JAMSTEC](#)

Observation Items: Precipitable water vapor (GNSS water vapor)

Science Keywords:

ATMOSPHERE > ATMOSPHERIC WATER VAPOR > WATER VAPOR

Observation Map



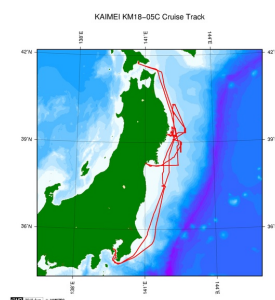
Data List

File names

☐ KM18-05C_gnsspww.dat

Related Information

☒ Cruise Data ☐ Dive Data



[Enlarge Image](#)

KM18-05C

Ship Name: KAIMEI

Period: 2018-05-29 - 2018-06-17

Chief Scientist: Shinji Tsuchida (JAMSTEC)

Project Name: [Tohoku Ecosystem-Associated Marine Sciences (TEAMS)]

Proposal Researches on marine ecosystem dynamics in the Tsunami affected area off Sanriku

Title:

Update History

2018-09-30 An observation data was registerd.

JAMSTEC

[Site Policy](#)

[Privacy Policy](#)

[Application for Data and](#)

[Samples](#)

[Data Policy](#)

[What's New](#)

[Update History](#)

[Feeds](#)

Lists

[Publication List](#)

[Amount of Public Info.](#)

Data

[Map Search](#)

[Data Tree](#)

[Detailed Search](#)

Information of the Ships

[NATSUSHIMA](#)

[KAIYO](#)

[YOKOSUKA](#)

[MIRAI](#)

[KAIREI](#)

[CHIKYU](#)

[KAIMEI](#)

[SHINSEI MARU](#)

[HAKUHO MARU](#)

Information of the Submersibles

[KAICO](#)

[SHINKAI 2000](#)

[SHINKAI 6500](#)

[DEEP TOW](#)

[HYPER-DOLPHIN](#)

[URASHIMA](#)

[YOKOSUKA DEEP TOW](#)

[6K Camera DEEP TOW](#)

[6K Sonar DEEP TOW](#)

[KM-ROV](#)

[POWER GRAB SAMPLER](#)

[\(SHELL\)](#)

[POWER GRAB SAMPLER](#)

[\(CLOW\)](#)

[BMS](#)

Go to a Cruise Information

Cruise ID:

Go to a Dive Information

Dive ID: