

MIRAI MR03-K04 Leg1 Shipboard Acoustic Doppler Current Profiler (ADCP)

Last Modified: 2017-04-11

[ReadMe](#) [Observation Data](#)

Cruise ID: [MR03-K04 Leg1](#)

Shipboard Acoustic Doppler Current Profiler (ADCP): Processed (PI)

Data Policy: [JAMSTEC](#)

Observation Items: Depth, Absolute velocity (zonal, meridional and vertical)

Science Keywords:

OCEANS > OCEAN CIRCULATION > OCEAN CURRENTS

Cruise Report

http://www.godac.jamstec.go.jp/catalog/data/doc_catalog/media/MR03-K04_leg1_all.pdf

For Using Data

Principal Investigator

Yasushi Yoshikawa (JAMSTEC)

Use Constraints

See [Terms and Conditions](#) about constrain of use.

Data Citation

See [Terms and Conditions](#) about data citation.

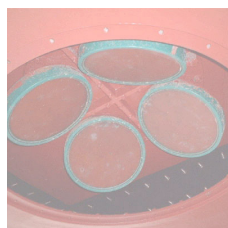
Instrument

Instrument:

Shipboard acoustic doppler current profiler (ADCP) (MR08-02 -)

Instrument:

Shipboard acoustic doppler current profiler (ADCP) (- MR08-E01)



About this data

- Please see the [Data book](#) for details of data.

- File name

ADCP_leg1.txt:241profiles

- Data structure of each profile

Line 1: header 1

Column 1-10: cruise code

Column 12-14: WHP line name

Column 16-22: analyzed point

Column 24-33: date(mm/dd/yyyy)

Column 35-39: time(hh:mm) in UTC

Column 41-48: latitude

Column 50-58: longitude

Line 2-36: data

Column 1-5: depth(m)

Column 7-12: zonal velocity(m/s)

Column 14-19: meridional velocity(m/s)

Column 21-26: standard error(m/s)

*1 On the CTD station: The CTD station name (e.g. '622') represents the analyzed point in the header. Time and position when the CTD operation was begun are recorded.

*2 On the way to the next CTD station: The hyphenated two CTD station names (e.g. '622-621') represent the analyzed point in the header. Recorded time is when the ship passed on mid-longitude of the CTD stations.

*3 The '99.999' in the data represents no available data.

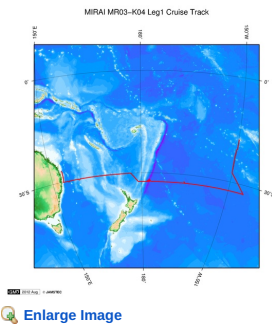
Contact

Yasushi Yoshikawa (JAMSTEC)

yoshikaway@jamstec.go.jp

.

Related Information



MR03-K04 Leg1

Ship Name: MIRAI

Period: 2003-08-03 - 2003-09-05

Chief Scientist: Masao Fukasawa (JAMSTEC)

Project Name: [Blue Earth Global Expedition 2003,POST-WOCE Hydrography]

Update History

2017-04-11	An observation data was registered.
2012-12-25	An observation data was registered.

JAMSTEC

Site Policy

Privacy Policy

Application for Data and Samples

Data Policy

What's New

Update History

Feeds

Lists

Publication List

Amount of Public Info.

Data

Map Search

Data Tree

Detailed Search

Information of the Ships

NATSUSHIMA

KAIYO

YOKOSUKA

MIRAI

KAIREI

CHIKYU

KAIMEI

SHINSEI MARU

HAKUHO MARU

Information of the Submersibles

KAIKO

SHINKAI 2000

SHINKAI 6500

DEEP TOW

HYPER-DOLPHIN

URASHIMA

YOKOSUKA DEEP TOW

6K Camera DEEP TOW

6K Sonar DEEP TOW

KM-ROV

POWER GRAB SAMPLER

(SHELL)

POWER GRAB SAMPLER

(CLOW)

BMS

Go to a Cruise Information

Cruise ID:

Go to a Dive Information

Dive ID:

Copyright 2011 Japan Agency for Marine-Earth Science and Technology



JAMSTEC

国立研究開発法人
海洋研究開発機構
JAPAN AGENCY FOR MARINE-EARTH SCIENCE AND TECHNOLOGY

MIRAI MR03-K04 Leg1 Shipboard Acoustic Doppler Current Profiler (ADCP)

Last Modified: 2017-04-11

[ReadMe](#)

Observation
Data

Cruise ID: [MR03-K04 Leg1](#)

Shipboard Acoustic Doppler Current Profiler (ADCP) Processed (PI)

Data Policy: [JAMSTEC](#)

Observation Items: Depth, Absolute velocity (zonal, meridional and vertical)

Science Keywords:

OCEANS > OCEAN CIRCULATION > OCEAN
CURRENTS

Cruise Report

http://www.godac.jamstec.go.jp/catalog/data/doc_catalog/media/MR03-K04_leg1_all.pdf

For Using Data

Principal Investigator

Yasushi Yoshikawa (JAMSTEC)

Use Constraints

See [Terms and Conditions](#) about constrain of use.

Data Citation

See [Terms and Conditions](#) about data citation.

Instrument

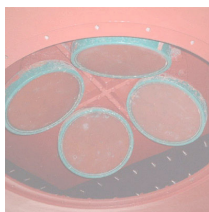
Instrument:

Shipboard acoustic doppler current
profiler (ADCP) (MR08-02 -)



Instrument:

Shipboard acoustic doppler current
profiler (ADCP) (- MR08-E01)



About this data

- Please see the [Data book](#) for details of data.

- File name

ADCP_leg1.txt:241profiles

- Data structure of each profile

Line 1: header 1

Column 1-10: cruise code

Column 12-14: WHP line name

Column 16-22: analyzed point

Column 24-33: date(mm/dd/yyyy)

Column 35-39: time(hh:mm) in UTC

Column 41-48: latitude

Column 50-58: longitude

Line 2-36: data

Column 1-5: depth(m)

Column 7-12: zonal velocity(m/s)

Column 14-19: meridional velocity(m/s)

Column 21-26: standard error(m/s)

*1 On the CTD station: The CTD station name (e.g. '622') represents the analyzed point in the header. Time and position when the CTD operation was begun are recorded.

*2 On the way to the next CTD station: The hyphenated two CTD station names (e.g. '622-621') represent the analyzed point in the header. Recorded time is when the ship passed on mid-longitude of the CTD stations.

*3 The '99.999' in the data represents no available data.

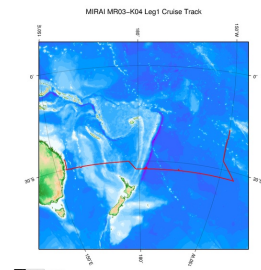
Contact

Yasushi Yoshikawa (JAMSTEC)

yoshikaway@jamstec.go.jp

.

Related Information



[Enlarge Image](#)

MR03-K04 Leg1

Ship Name: MIRAI
Period: 2003-08-03 - 2003-09-05
Chief Scientist: Masao Fukasawa (JAMSTEC)
Project Name: [Blue Earth Global Expedition 2003,POST-WOCE Hydrography]

Update History

2017-04-11	An observation data was registerd.
2012-12-25	An observation data was registerd.

JAMSTEC
Site Policy
Privacy Policy
Application for Data and Samples
Data Policy
What's New
Update History
Feeds

Lists
Publication List
Amount of Public Info.
Data
Map Search
Data Tree
Detailed Search

Information of the Ships
NATSUSHIMA
KAIYO
YOKOSUKA
MIRAI
KAIREI
CHIKYU
KAIMEI
SHINSEI MARU
HAKUHO MARU

Information of the Submersibles
KAIKO
SHINKAI 2000
SHINKAI 6500
DEEP TOW
HYPER-DOLPHIN
URASHIMA
YOKOSUKA DEEP TOW
6K Camera DEEP TOW
6K Sonar DEEP TOW
KM-ROV
POWER GRAB
SAMPLER (SHELL)
POWER GRAB
SAMPLER (CLOW)
BMS

Go to a Cruise Information

Cruise ID:

Go to a Dive Information

Dive ID:

Copyright 2011 Japan Agency for Marine-Earth Science and Technology

JAMSTEC 国立研究開発法人 海洋研究開発機構
JAPAN AGENCY FOR MARINE-EARTH SCIENCE AND TECHNOLOGY

MIRAI MR03-K04 Leg1 Shipboard Acoustic Doppler Current Profiler (ADCP)

Last Modified: 2017-04-11

[ReadMe](#) [Observation Data](#)

Cruise ID: [MR03-K04 Leg1](#)

Shipboard Acoustic Doppler Current Profiler (ADCP): Processed (PI)

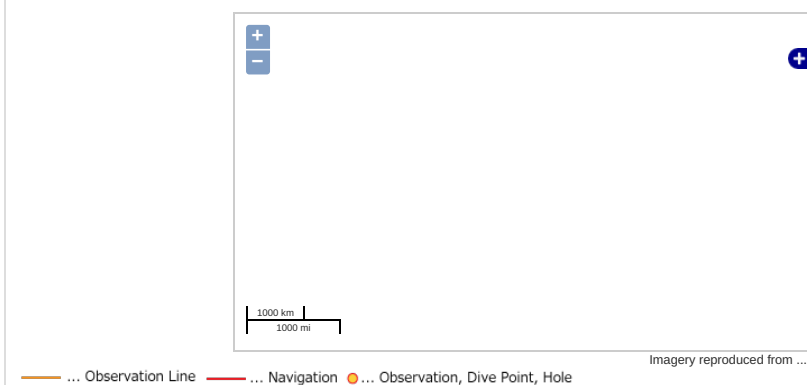
Data Policy: [JAMSTEC](#)

Observation Items: Depth, Absolute velocity (zonal, meridional and vertical)

Science Keywords:

OCEANS > OCEAN CIRCULATION > OCEAN CURRENTS

Observation Map

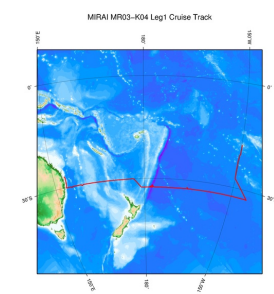


Data List

File names

☐ adcp_leg1.txt

Related Information



[Enlarge Image](#)

MR03-K04 Leg1

Ship Name: MIRAI

Period: 2003-08-03 - 2003-09-05

Chief Scientist: Masao Fukasawa (JAMSTEC)

Project Name: [Blue Earth Global Expedition 2003, POST-WOCE Hydrography]

Update History

2017-04-11	An observation data was registered.
2012-12-25	An observation data was registered.

JAMSTEC

[Site Policy](#)
[Privacy Policy](#)
[Application for Data and Samples](#)
[Data Policy](#)
[What's New](#)
[Update History](#)
[Feeds](#)

Lists

[Publication List](#)
[Amount of Public Info.](#)
[Data](#)
[Map Search](#)
[Data Tree](#)
[Detailed Search](#)

Information of the Ships

[NATSUSHIMA](#)
[KAIYO](#)
[YOKOSUKA](#)
[MIRAI](#)
[KAIREI](#)
[CHIKYU](#)
[KAIMEI](#)
[SHINSEI MARU](#)
[HAKUHO MARU](#)

Information of the Submersibles

[KAIKO](#)
[SHINKAI 2000](#)
[SHINKAI 6500](#)
[DEEP TOW](#)
[HYPER-DOLPHIN](#)
[URASHIMA](#)
[YOKOSUKA DEEP TOW](#)
[6K Camera DEEP TOW](#)
[6K Sonar DEEP TOW](#)
[KM-ROV](#)
[POWER GRAB SAMPLER \(SHELL\)](#)
[POWER GRAB SAMPLER \(CLOW\)](#)
[BMS](#)

Go to a Cruise Information

Cruise ID:

Go to a Dive Information

Dive ID: