

MIRAI MR11-08 Leg3 Bathymetry (MBES)

Last Modified: 2017-04-11

[ReadMe](#)

[Observation Data](#)

Cruise ID: [MR11-08 Leg3](#)

Bathymetry (MBES): Processed (PI)

Data Policy: [JAMSTEC](#)

Observation Items: Depth

Science Keywords:

OCEANS > BATHYMETRY/SEAFLOOR TOPOGRAPHY > BATHYMETRY
SOLID EARTH > GEOMORHOLOGY

Cruise Report

http://www.godac.jamstec.go.jp/catalog/data/doc_catalog/media/MR11-08_leg1-3_all.pdf

[For Using Data](#)

Principal Investigator

Takeshi Matsumoto (University of the Ryukyus)
Naoto Hirano (Tohoku University)

Use Constraints

See [Terms and Conditions](#) about constrain of use.

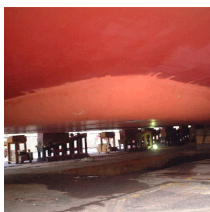
Data Citation

See [Terms and Conditions](#) about data citation.

Instrument

Instrument:

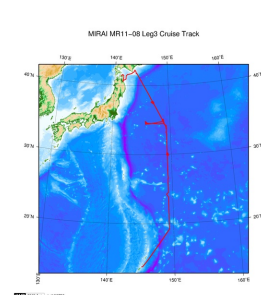
Multi-narrow beam echo sounder (-
MR12-E01)



Overview

Please see the [Data book](#) for details of data.

Related Information



[Enlarge Image](#)

MR11-08 Leg3

Ship Name: MIRAI
Period: 2012-01-12 - 2012-02-09
Chief Scientist: Yuichiro Kumamoto (JAMSTEC)
Project Name: [POST-WOCE Hydrography]

Update History

2017-04-11	An observation data was registered.
2014-04-30	An observation data was registered.
2012-09-28	An observation data was registered.

JAMSTEC

[Site Policy](#)
[Privacy Policy](#)
[Application for Data and Samples](#)
[Data Policy](#)

[What's New](#)
[Update History](#)
[Feeds](#)

Lists

[Publication List](#)
[Amount of Public Info.](#)

Data

[Map Search](#)
[Data Tree](#)
[Detailed Search](#)

Information of the Ships

[NATSUSHIMA](#)
[KAIYO](#)
[YOKOSUKA](#)
[MIRAI](#)
[KAIREI](#)
[CHIKYU](#)
[KAIMEI](#)
[SHINSEI MARU](#)
[HAKUHO MARU](#)

Information of the Submersibles

[KAIKO](#)
[SHINKAI 2000](#)
[SHINKAI 6500](#)
[DEEP TOW](#)
[HYPER-DOLPHIN](#)
[URASHIMA](#)
[YOKOSUKA DEEP TOW](#)
[6K Camera DEEP TOW](#)
[6K Sonar DEEP TOW](#)
[KM-ROV](#)
[POWER GRAB](#)
[SAMPLER \(SHELL\)](#)
[POWER GRAB](#)
[SAMPLER \(CLOW\)](#)
[BMS](#)

Go to a Cruise Information

Cruise ID:

Go to a Dive Information

Dive ID:

MIRAI MR11-08 Leg3 Bathymetry (MBES)

Last Modified: 2017-04-11

[ReadMe](#) [Observation Data](#)

Cruise ID: [MR11-08 Leg3](#)

Bathymetry (MBES): Processed (PI)

Data Policy: [JAMSTEC](#)

Observation Items: Depth

Science Keywords:

OCEANS > BATHYMETRY/SEAFLOOR TOPOGRAPHY > BATHYMETRY
SOLID EARTH > GEOMORPHOLOGY

Cruise Report

http://www.godac.jamstec.go.jp/catalog/data/doc_catalog/media/MR11-08_leg1-3_all.pdf

For Using Data

Principal Investigator

Takeshi Matsumoto (University of the Ryukyus)
Naoto Hirano (Tohoku University)

Use Constraints

See [Terms and Conditions](#) about constrain of use.

Data Citation

See [Terms and Conditions](#) about data citation.

Instrument

Instrument:

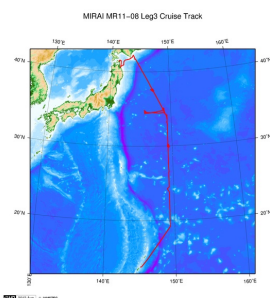
Multi-narrow beam echo sounder (-
MR12-E01)



Overview

Please see the [Data book](#) for details of data.

Related Information



MR11-08 Leg3

Ship Name: MIRAI
Period: 2012-01-12 - 2012-02-09
Chief Scientist: Yuichiro Kumamoto (JAMSTEC)
Project Name: [POST-WOCE Hydrography]

[Enlarge Image](#)

Update History

2017-04-11	An observation data was registerd.
2014-04-30	An observation data was registerd.
2012-09-28	An observation data was registerd.

JAMSTEC

[Site Policy](#)
[Privacy Policy](#)
[Application for Data and Samples](#)
[Data Policy](#)
[What's New](#)
[Update History](#)
[Feeds](#)

Lists

[Publication List](#)
[Amount of Public Info.](#)

[Data](#)
[Map Search](#)
[Data Tree](#)
[Detailed Search](#)

Information of the Ships

[NATSUSHIMA](#)
[KAIYO](#)
[YOKOSUKA](#)
[MIRAI](#)
[KAIREI](#)
[CHIKYU](#)
[KAIMEI](#)
[SHINSEI MARU](#)
[HAKUHO MARU](#)

Information of the Submersibles

[KAIKO](#)
[SHINKAI 2000](#)
[SHINKAI 6500](#)
[DEEP TOW](#)
[HYPER-DOLPHIN](#)
[URASHIMA](#)
[YOKOSUKA DEEP TOW](#)
[6K Camera DEEP TOW](#)
[6K Sonar DEEP TOW](#)
[KM-ROV](#)
[POWER GRAB SAMPLER \(SHELL\)](#)
[POWER GRAB SAMPLER \(CLOW\)](#)
[BMS](#)

Go to a Cruise Information

Cruise ID:

Go to a Dive Information

Dive ID:



MIRAI MR11-08 Leg3 Bathymetry (MBES)

Last Modified: 2017-04-11

[ReadMe](#) [Observation Data](#)

Cruise ID: [MR11-08 Leg3](#)

Bathymetry (MBES): Processed (PI)

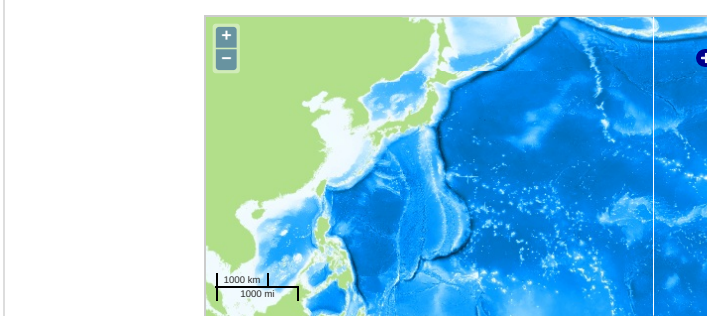
Data Policy: [JAMSTEC](#)

Observation Items: Depth

Science Keywords:

OCEANS > BATHYMETRY/SEAFLOOR TOPOGRAPHY > BATHYMETRY
SOLID EARTH > GEOMORPHOLOGY

Observation Map



Imagery reproduced from ...

Data List

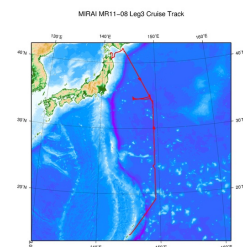
[Add to Basket](#)

☐ File names

☐ MR1108L3_1_150m_Interp.grd

☐ MR1108L3_2_150m_Interp.grd

Related Information



[Enlarge Image](#)

MR11-08 Leg3

Ship Name: MIRAI
Period: 2012-01-12 - 2012-02-09
Chief Scientist: Yuichiro Kumamoto (JAMSTEC)
Project Name: [POST-WOCE Hydrography]

Update History

2017-04-11	An observation data was registered.
2014-04-30	An observation data was registered.
2012-09-28	An observation data was registered.

JAMSTEC

[Site Policy](#)
[Privacy Policy](#)
[Application for Data and Samples](#)
[Data Policy](#)

[What's New](#)
[Update History](#)
[Feeds](#)

Lists

[Publication List](#)
[Amount of Public Info.](#)
[Data](#)
[Map Search](#)
[Data Tree](#)
[Detailed Search](#)

Information of the Ships

[NATSUSHIMA](#)
[KAIYO](#)
[YOKOSUKA](#)
[MIRAI](#)
[KAIREI](#)
[CHIKYU](#)
[KAIMEI](#)
[SHINSEI MARU](#)
[HAKUHO MARU](#)

Information of the Submersibles

[KAICO](#)
[SHINKAI 2000](#)
[SHINKAI 6500](#)
[DEEP TOW](#)
[HYPER-DOLPHIN](#)
[URASHIMA](#)
[YOKOSUKA DEEP TOW](#)
[6K Camera DEEP TOW](#)
[6K Sonar DEEP TOW](#)
[KM-ROV](#)
[POWER GRAB SAMPLER \(SHELL\)](#)
[POWER GRAB SAMPLER \(CLOW\)](#)
[BMS](#)

Go to a Cruise Information

Cruise ID:

Go to a Dive Information

Dive ID: